

TERRA SURVEYING
RE-PLAT
for
JOEL KNUTSON AND LISA PETERSON

HOOD RIVER COUNTY
SURVEYOR'S OFFICE
CS# 2011 029
DATE FILED: 8-16-11
BY: [Signature]

File Number 201107P
Instrument received on the 11th day of August, 2011 at 10:56 AM
Leah Day - Clerk
Hood River County Director of Records

SURVEYOR'S CERTIFICATE
I, Erik M. Carlson,
being first duly sworn, depose and say that I have correctly surveyed and marked with proper monuments the lands represented on this Partition Plat, the boundaries being described in Instrument #2011-01315 in Hood River County records.

REGISTERED PROFESSIONAL LAND SURVEYOR
Erik M. Carlson
OREGON
December 30, 2005
ERIK M. CARLSON
72306
Expires: December, 2011

ACKNOWLEDGMENTS
We the owner(s) of the land shown herein, hereby declare that this division of land has been made with our free consent and in accordance with our desires.
[Signatures]
OWNER DATE
This instrument was acknowledged before me as a representative of Joel Knutson and Lisa Peterson on August 9, 2011 by JOEL KNUTSON & LISA PETERSON
[Signature]
Notary Signature

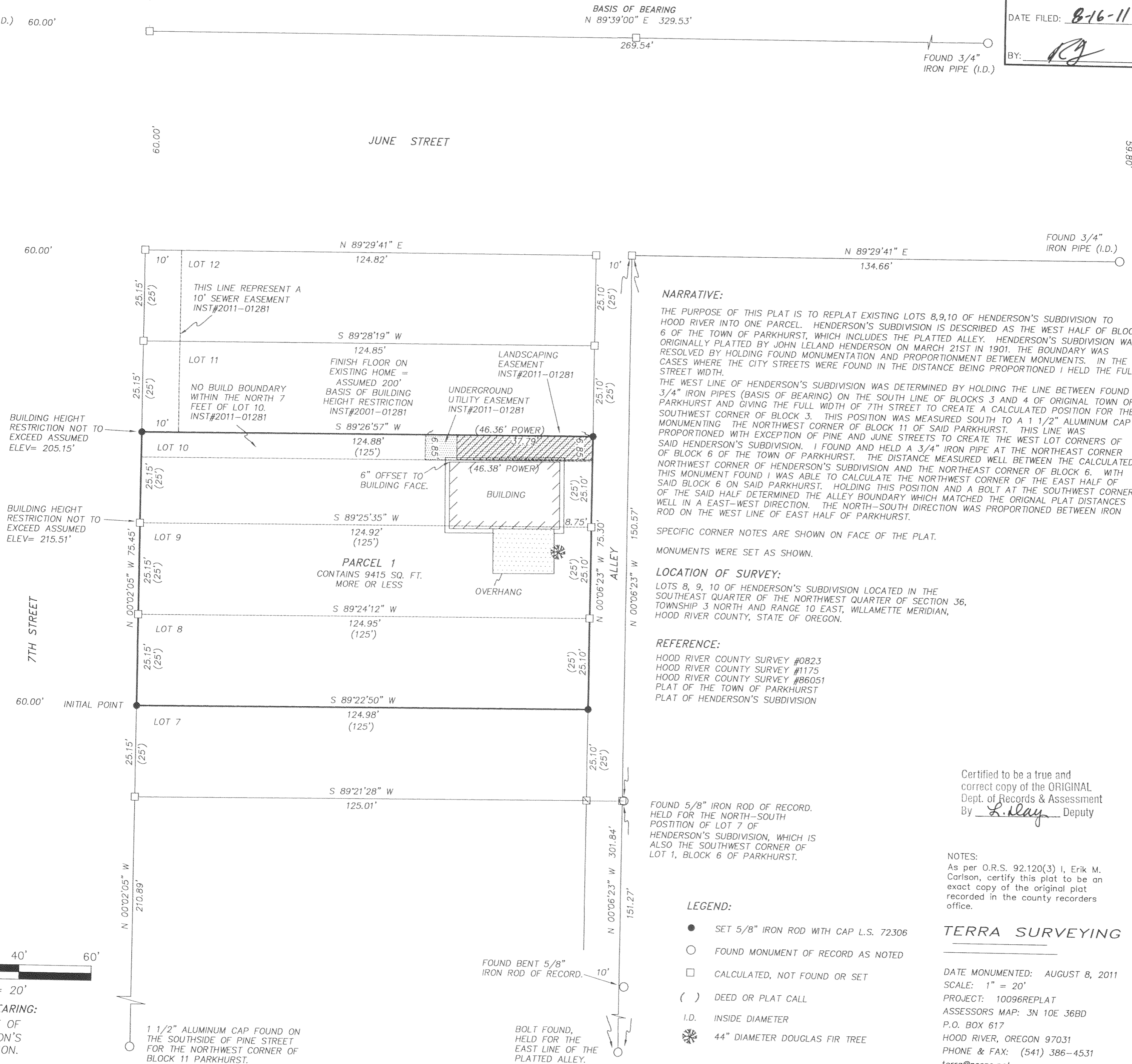
STATE OF OREGON }
COUNTY OF HOOD RIVER } s.s.
Subscribed and sworn to before me on this 9th day of AUGUST, 2011.

NOTARY PUBLIC - OREGON
COMMISSION NO. 426063
MY COMMISSION EXPIRES APRIL 9, 2012

APPROVALS
I hereby certify that all taxes and assessments due hereon have been fully paid as required by law.
[Signature]
Hood River County Director of Budget and Finance, Treasurer/Tax Collector

I hereby certify this partition was examined and approved as of this 9th day of August, 2011.
[Signature]
Hood River County Surveyor

I hereby certify this partition was examined and approved as of this 10th day of August, 2011.
Planning File Number 2011-19
[Signature]
The City of Hood River Planning Director



NARRATIVE:
THE PURPOSE OF THIS PLAT IS TO REPLAT EXISTING LOTS 8,9,10 OF HENDERSON'S SUBDIVISION TO HOOD RIVER INTO ONE PARCEL. HENDERSON'S SUBDIVISION IS DESCRIBED AS THE WEST HALF OF BLOCK 6 OF THE TOWN OF PARKHURST, WHICH INCLUDES THE PLATTED ALLEY. HENDERSON'S SUBDIVISION WAS ORIGINALLY PLATTED BY JOHN LELAND HENDERSON ON MARCH 21ST IN 1901. THE BOUNDARY WAS RESOLVED BY HOLDING FOUND MONUMENTATION AND PROPORTIONMENT BETWEEN MONUMENTS. IN THE CASES WHERE THE CITY STREETS WERE FOUND IN THE DISTANCE BEING PROPORTIONED I HELD THE FULL STREET WIDTH.
THE WEST LINE OF HENDERSON'S SUBDIVISION WAS DETERMINED BY HOLDING THE LINE BETWEEN FOUND 3/4" IRON PIPES (BASIS OF BEARING) ON THE SOUTH LINE OF BLOCKS 3 AND 4 OF ORIGINAL TOWN OF PARKHURST AND GIVING THE FULL WIDTH OF 7TH STREET TO CREATE A CALCULATED POSITION FOR THE SOUTHWEST CORNER OF BLOCK 3. THIS POSITION WAS MEASURED SOUTH TO A 1 1/2" ALUMINUM CAP MONUMENTING THE NORTHWEST CORNER OF BLOCK 11 OF SAID PARKHURST. THIS LINE WAS SAID HENDERSON'S SUBDIVISION. I FOUND AND HELD A 3/4" IRON PIPE AT THE NORTHEAST CORNER OF BLOCK 6 OF THE TOWN OF PARKHURST. THE DISTANCE MEASURED WELL BETWEEN THE CALCULATED NORTHWEST CORNER OF HENDERSON'S SUBDIVISION AND THE NORTHEAST CORNER OF BLOCK 6, WITH SAID BLOCK 6 ON SAID PARKHURST. HOLDING THIS POSITION AND A BOLT AT THE SOUTHWEST CORNER OF THE SAID HALF DETERMINED THE ALLEY BOUNDARY WHICH MATCHED THE ORIGINAL PLAT DISTANCES WELL IN A EAST-WEST DIRECTION. THE NORTH-SOUTH DIRECTION WAS PROPORTIONED BETWEEN IRON ROD ON THE WEST LINE OF EAST HALF OF PARKHURST.

SPECIFIC CORNER NOTES ARE SHOWN ON FACE OF THE PLAT.
MONUMENTS WERE SET AS SHOWN.

LOCATION OF SURVEY:
LOTS 8, 9, 10 OF HENDERSON'S SUBDIVISION LOCATED IN THE SOUTHEAST QUARTER OF THE NORTHWEST QUARTER OF SECTION 36, TOWNSHIP 3 NORTH AND RANGE 10 EAST, WILLAMETTE MERIDIAN, HOOD RIVER COUNTY, STATE OF OREGON.

REFERENCE:
HOOD RIVER COUNTY SURVEY #0823
HOOD RIVER COUNTY SURVEY #1175
HOOD RIVER COUNTY SURVEY #86051
PLAT OF THE TOWN OF PARKHURST
PLAT OF HENDERSON'S SUBDIVISION

FOUND 5/8" IRON ROD OF RECORD. HELD FOR THE NORTH-SOUTH POSITION OF LOT 7 OF HENDERSON'S SUBDIVISION, WHICH IS ALSO THE SOUTHWEST CORNER OF LOT 1, BLOCK 6 OF PARKHURST.

- LEGEND:**
- SET 5/8" IRON ROD WITH CAP L.S. 72306
 - FOUND MONUMENT OF RECORD AS NOTED
 - CALCULATED, NOT FOUND OR SET
 - () DEED OR PLAT CALL
 - I.D. INSIDE DIAMETER
 - ★ 44" DIAMETER DOUGLAS FIR TREE

Certified to be a true and correct copy of the ORIGINAL Dept. of Records & Assessment By [Signature] Deputy

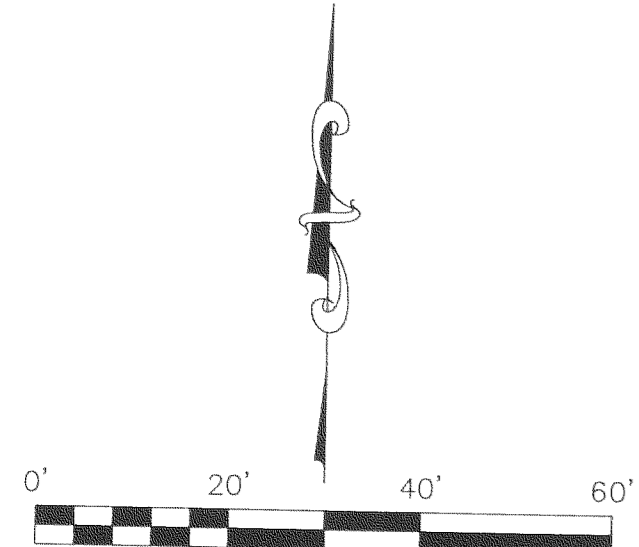
NOTES:
As per O.R.S. 92.120(3) I, Erik M. Carlson, certify this plat to be an exact copy of the original plat recorded in the county recorders office.

TERRA SURVEYING
DATE MONUMENTED: AUGUST 8, 2011
SCALE: 1" = 20'
PROJECT: 10096REPLAT
ASSESSORS MAP: 3N 10E 36BD
P.O. BOX 617
HOOD RIVER, OREGON 97031
PHONE & FAX: (541) 386-4531
terra@gorge.net
www.terralandsurveying.com

FOUND 3/4" IRON PIPE (I.D.) 60.00'

BASIS OF BEARING
N 89°39'00" E 329.53'

FOUND 3/4" IRON PIPE (I.D.)



1 1/2" ALUMINUM CAP FOUND ON THE SOUTHSIDE OF PINE STREET FOR THE NORTHWEST CORNER OF BLOCK 11 PARKHURST.

BOLT FOUND, HELD FOR THE EAST LINE OF THE PLATTED ALLEY.

RECEIVED AUG 12 2011

CS 2011 029