

3" BRASS CAP OF RECORD FOUND IN MONUMENT BOX AT CORNER COMMON TO SECTIONS 2/3/10/11

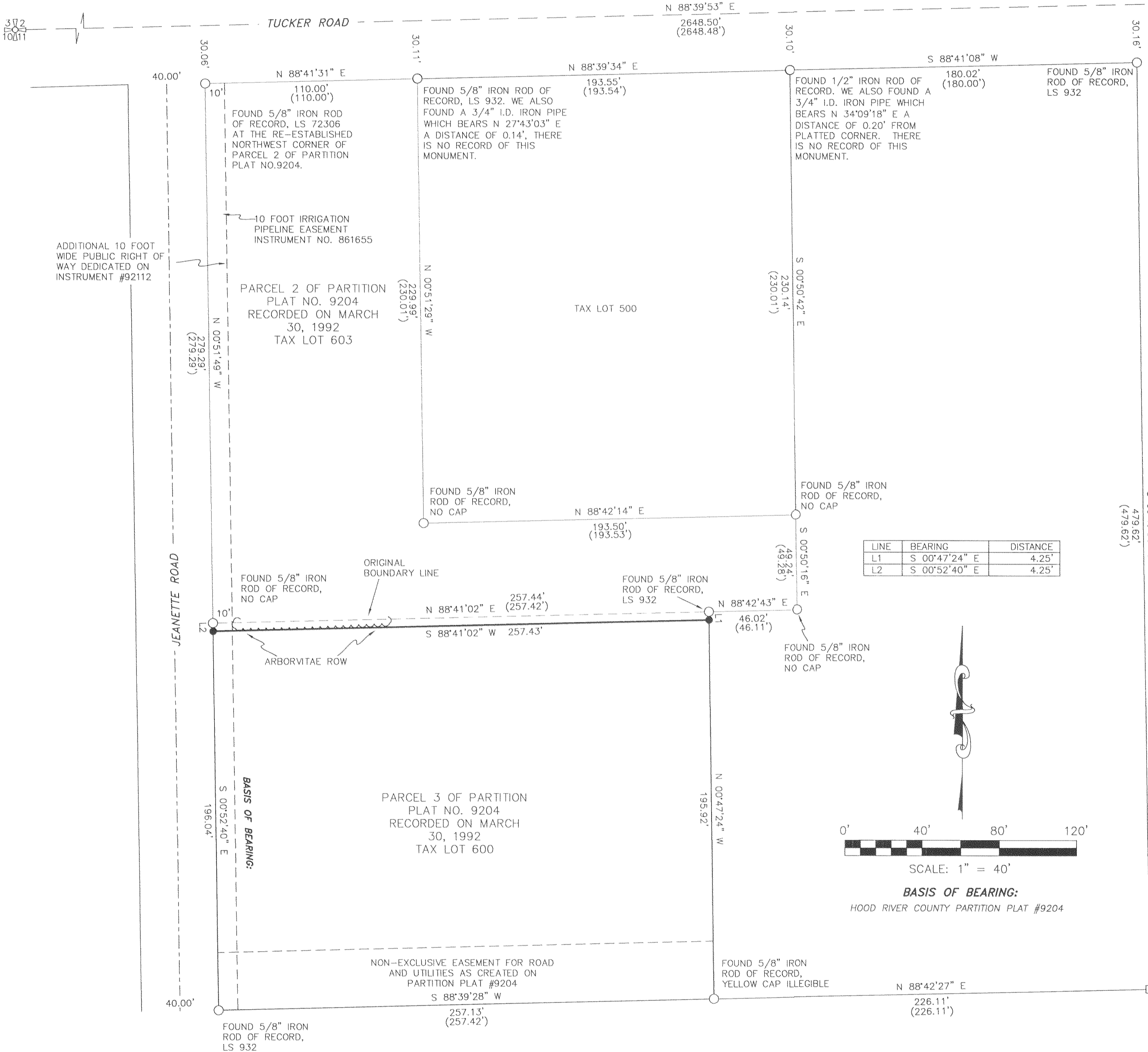
3" BRASS CAP OF RECORD FOUND IN MONUMENT BOX MONUMENTING THE 1/4 CORNER

HOOD RIVER COUNTY SURVEYOR'S OFFICE

CS# 2011 026

DATE FILED: 7-19-11

BY: *[Signature]*



NARRATIVE:

THE PURPOSE OF THIS SURVEY WAS TO ADJUST THE PROPERTY LINE BETWEEN PARCELS 2 AND 3 OF PARTITION PLAT NO. 9204, RECORDED ON MARCH 30, 1992. ALL OF THE PARCEL CORNERS WERE FOUND AND ACCEPTED, AS THE MEASUREMENTS BETWEEN THEM WERE WELL WITHIN TOLERANCE. THE STRUCTURES ARE SHOWN AND REMAIN OUTSIDE THE COUNTY SETBACK LINES.

SPECIFIC MONUMENT NOTES ON WHAT WAS FOUND IS SHOWN ON THE FACE OF THE SURVEY.

LOCATION OF SURVEY:

A TRACT OF LAND LOCATED IN THE NORTHWEST QUARTER OF SECTION 11, TOWNSHIP 2 NORTH, RANGE 10 EAST, WILLAMETTE MERIDIAN, HOOD RIVER COUNTY, OREGON.

REFERENCES:

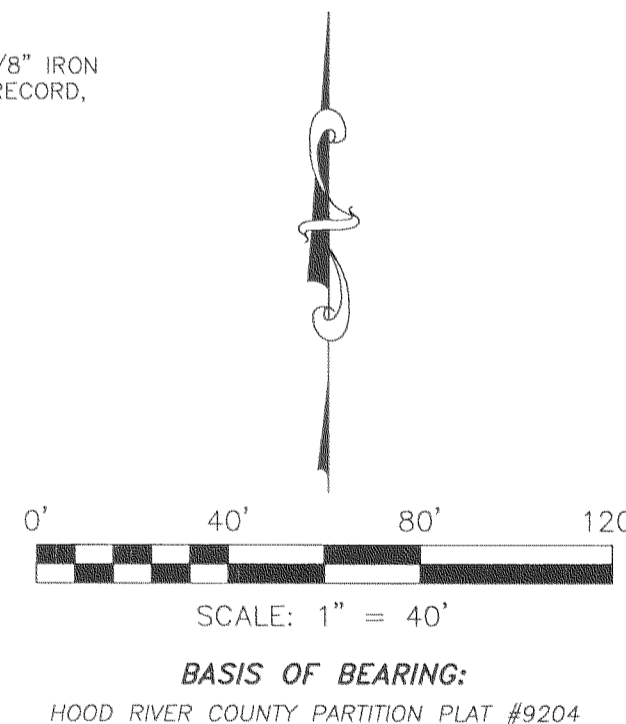
- HOOD RIVER COUNTY SURVEY NO. 88013
- HOOD RIVER COUNTY SURVEY NO. 89034
- HOOD RIVER COUNTY SURVEY NO. 92026 (PART. PLAT #9204)
- HOOD RIVER COUNTY SURVEY NO. 93026 (PART. PLAT #9308)
- HOOD RIVER COUNTY SURVEY NO. 2005056
- HOOD RIVER COUNTY SURVEY NO. 2009044
- HOOD RIVER COUNTY DEED NO. 2002-3990
- HOOD RIVER COUNTY DEED NO. 2010-00008
- HOOD RIVER COUNTY RECORDS BOOK 19, PAGE 419
- HOOD RIVER COUNTY RECORDS BOOK 78, PAGE 213
- HOOD RIVER COUNTY INSTRUMENT NO. 720439
- HOOD RIVER COUNTY INSTRUMENT NO. 861655
- HOOD RIVER COUNTY INSTRUMENT NO. 861654
- HOOD RIVER COUNTY INSTRUMENT NO. 912907
- HOOD RIVER COUNTY INSTRUMENT NO. 921112

LEGEND:

- SET 5/8" X 30" IRON ROD WITH PLASTIC CAP, LS 72306
- FOUND MONUMENT OF RECORD
- CALCULATED, NOT FOUND OR SET
- () DEED OR PLAT CALL
- I.D. INSIDE DIAMETER

AREA TABLE:

	EXISTING LOT SIZE	ADJUSTED LOT SIZE
TAX LOT 603	0.92 ACRES, MORE OR LESS	0.95 ACRES, MORE OR LESS
TAX LOT 600	1.18 ACRES, MORE OR LESS	1.15 ACRES, MORE OR LESS



PROPERTY LINE ADJUSTMENT
for
GORDON AND SHARON COOK

REGISTERED PROFESSIONAL LAND SURVEYOR

Erik M. Carlson
OREGON
December 30, 2005
ERIK M. CARLSON
72306

Expires: December, 2011

TERRA SURVEYING

DATE MONUMENTED: JUNE 16, 2011
SCALE: 1" = 40'
PROJECT: 11051
ASSESSORS MAP: 2N-10E-11B
P.O. BOX 617
HOOD RIVER, OREGON 97031
PHONE & FAX: (541) 386-4531
E-Mail: terra@gorge.net

RECEIVED JUL 12 2011

CS 2011 026