

BOUNDARY LINE ADJUSTMENT SURVEY  
for  
COLUMBIA CASCADE  
HOUSING CORPORATION

BOUNDARY LINE ADJUSTMENT APPROVAL

APPROVED FOR FILING THIS 26 DAY OF  
April, 2010.

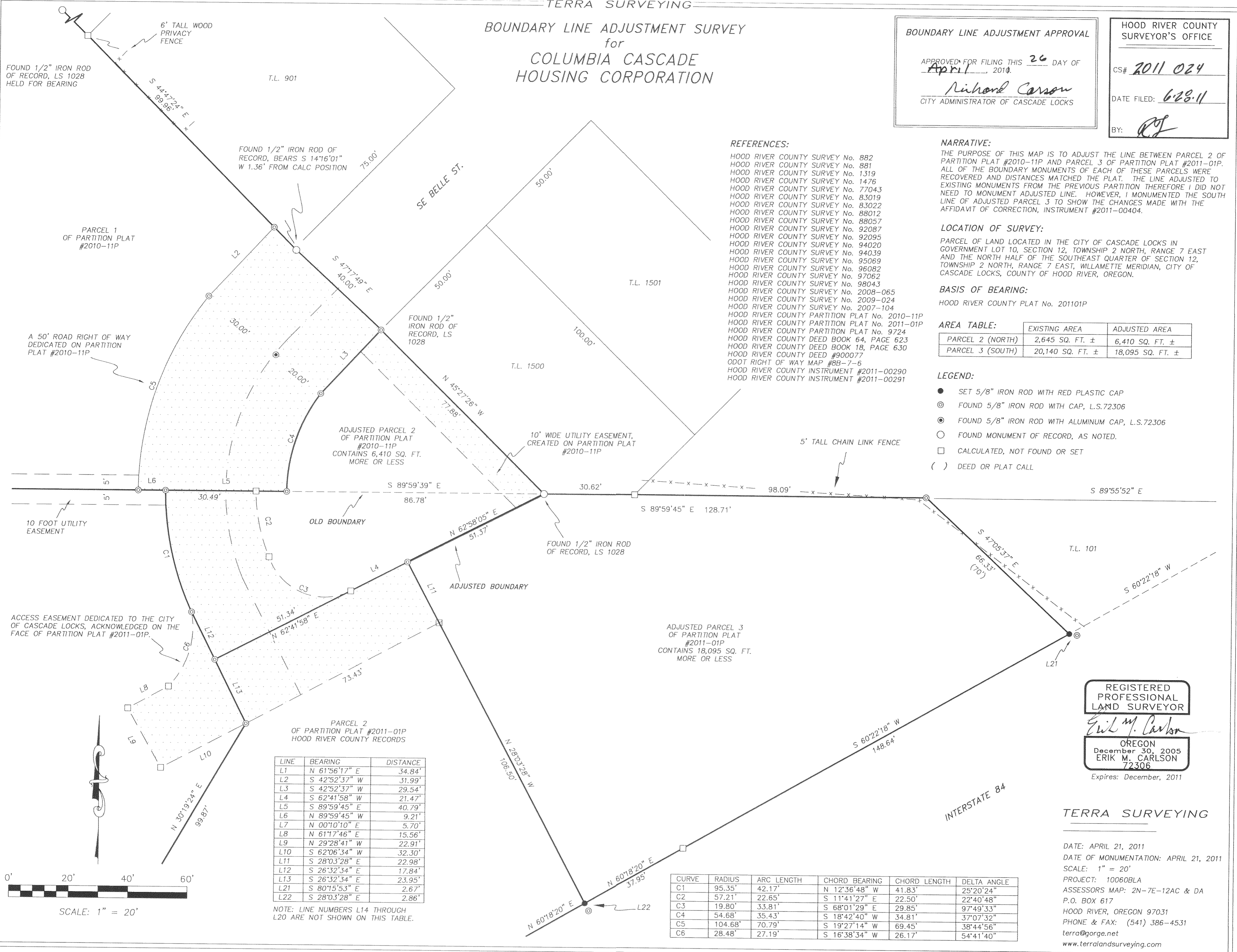
*Richard Carson*  
CITY ADMINISTRATOR OF CASCADE LOCKS

HOOD RIVER COUNTY  
SURVEYOR'S OFFICE

CS# 2011 024

DATE FILED: 6-28-11

BY: *[Signature]*



- REFERENCES:
- HOOD RIVER COUNTY SURVEY No. 882
  - HOOD RIVER COUNTY SURVEY No. 881
  - HOOD RIVER COUNTY SURVEY No. 1319
  - HOOD RIVER COUNTY SURVEY No. 1476
  - HOOD RIVER COUNTY SURVEY No. 77043
  - HOOD RIVER COUNTY SURVEY No. 83019
  - HOOD RIVER COUNTY SURVEY No. 83022
  - HOOD RIVER COUNTY SURVEY No. 88012
  - HOOD RIVER COUNTY SURVEY No. 88057
  - HOOD RIVER COUNTY SURVEY No. 92087
  - HOOD RIVER COUNTY SURVEY No. 92095
  - HOOD RIVER COUNTY SURVEY No. 94020
  - HOOD RIVER COUNTY SURVEY No. 94039
  - HOOD RIVER COUNTY SURVEY No. 95069
  - HOOD RIVER COUNTY SURVEY No. 96082
  - HOOD RIVER COUNTY SURVEY No. 97062
  - HOOD RIVER COUNTY SURVEY No. 98043
  - HOOD RIVER COUNTY SURVEY No. 2008-065
  - HOOD RIVER COUNTY SURVEY No. 2009-024
  - HOOD RIVER COUNTY SURVEY No. 2007-104
  - HOOD RIVER COUNTY PARTITION PLAT No. 2010-11P
  - HOOD RIVER COUNTY PARTITION PLAT No. 2011-01P
  - HOOD RIVER COUNTY PARTITION PLAT No. 9724
  - HOOD RIVER COUNTY DEED BOOK 64, PAGE 623
  - HOOD RIVER COUNTY DEED BOOK 18, PAGE 630
  - HOOD RIVER COUNTY DEED #900077
  - ODOT RIGHT OF WAY MAP #88-7-6
  - HOOD RIVER COUNTY INSTRUMENT #2011-00290
  - HOOD RIVER COUNTY INSTRUMENT #2011-00291

NARRATIVE:  
THE PURPOSE OF THIS MAP IS TO ADJUST THE LINE BETWEEN PARCEL 2 OF PARTITION PLAT #2010-11P AND PARCEL 3 OF PARTITION PLAT #2011-01P. ALL OF THE BOUNDARY MONUMENTS OF EACH OF THESE PARCELS WERE RECOVERED AND DISTANCES MATCHED THE PLAT. THE LINE ADJUSTED TO EXISTING MONUMENTS FROM THE PREVIOUS PARTITION THEREFORE I DID NOT NEED TO MONUMENT ADJUSTED LINE. HOWEVER, I MONUMENTED THE SOUTH LINE OF ADJUSTED PARCEL 3 TO SHOW THE CHANGES MADE WITH THE AFFIDAVIT OF CORRECTION, INSTRUMENT #2011-00404.

LOCATION OF SURVEY:  
PARCEL OF LAND LOCATED IN THE CITY OF CASCADE LOCKS IN GOVERNMENT LOT 10, SECTION 12, TOWNSHIP 2 NORTH, RANGE 7 EAST AND THE NORTH HALF OF THE SOUTHEAST QUARTER OF SECTION 12, TOWNSHIP 2 NORTH, RANGE 7 EAST, WILLAMETTE MERIDIAN, CITY OF CASCADE LOCKS, COUNTY OF HOOD RIVER, OREGON.

BASIS OF BEARING:  
HOOD RIVER COUNTY PLAT No. 201101P

AREA TABLE:

	EXISTING AREA	ADJUSTED AREA
PARCEL 2 (NORTH)	2,645 SQ. FT. ±	6,410 SQ. FT. ±
PARCEL 3 (SOUTH)	20,140 SQ. FT. ±	18,095 SQ. FT. ±

- LEGEND:
- SET 5/8" IRON ROD WITH RED PLASTIC CAP
  - ⊙ FOUND 5/8" IRON ROD WITH CAP, L.S.72306
  - ⊙ FOUND 5/8" IRON ROD WITH ALUMINUM CAP, L.S.72306
  - FOUND MONUMENT OF RECORD, AS NOTED.
  - CALCULATED, NOT FOUND OR SET
  - ( ) DEED OR PLAT CALL

PARCEL 2 OF PARTITION PLAT #2011-01P  
HOOD RIVER COUNTY RECORDS

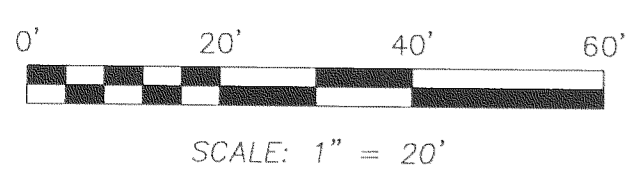
LINE	BEARING	DISTANCE
L1	N 61°56'17" E	34.84'
L2	S 42°52'37" W	31.99'
L3	S 42°52'37" W	29.54'
L4	S 62°41'58" W	21.47'
L5	S 89°59'45" E	40.79'
L6	N 89°59'45" W	9.21'
L7	N 00°10'10" E	5.70'
L8	N 61°17'46" E	15.56'
L9	N 29°28'41" W	22.91'
L10	S 62°06'34" W	32.30'
L11	S 28°03'28" E	22.98'
L12	S 26°32'34" E	17.84'
L13	S 26°32'34" E	23.95'
L21	S 80°15'53" E	2.67'
L22	S 28°03'28" E	2.86'

NOTE: LINE NUMBERS L14 THROUGH L20 ARE NOT SHOWN ON THIS TABLE.

CURVE	RADIUS	ARC LENGTH	CHORD BEARING	CHORD LENGTH	DELTA ANGLE
C1	95.35'	42.17'	N 12°36'48" W	41.83'	25°20'24"
C2	57.21'	22.65'	S 11°41'27" E	22.50'	22°40'48"
C3	19.80'	33.81'	S 68°01'29" E	29.85'	97°49'33"
C4	54.68'	35.43'	S 18°42'40" W	34.81'	37°07'32"
C5	104.68'	70.79'	S 19°27'14" W	69.45'	38°44'56"
C6	28.48'	27.19'	S 16°38'34" W	26.17'	54°41'40"

REGISTERED PROFESSIONAL LAND SURVEYOR  
*Erik M. Carlson*  
OREGON  
December 30, 2005  
ERIK M. CARLSON  
72306  
Expires: December, 2011

TERRA SURVEYING  
DATE: APRIL 21, 2011  
DATE OF MONUMENTATION: APRIL 21, 2011  
SCALE: 1" = 20'  
PROJECT: 10060BLA  
ASSESSORS MAP: 2N-7E-12AC & DA  
P.O. BOX 617  
HOOD RIVER, OREGON 97031  
PHONE & FAX: (541) 386-4531  
terra@gorge.net  
www.terralandsurveying.com



SCALE: 1" = 20'