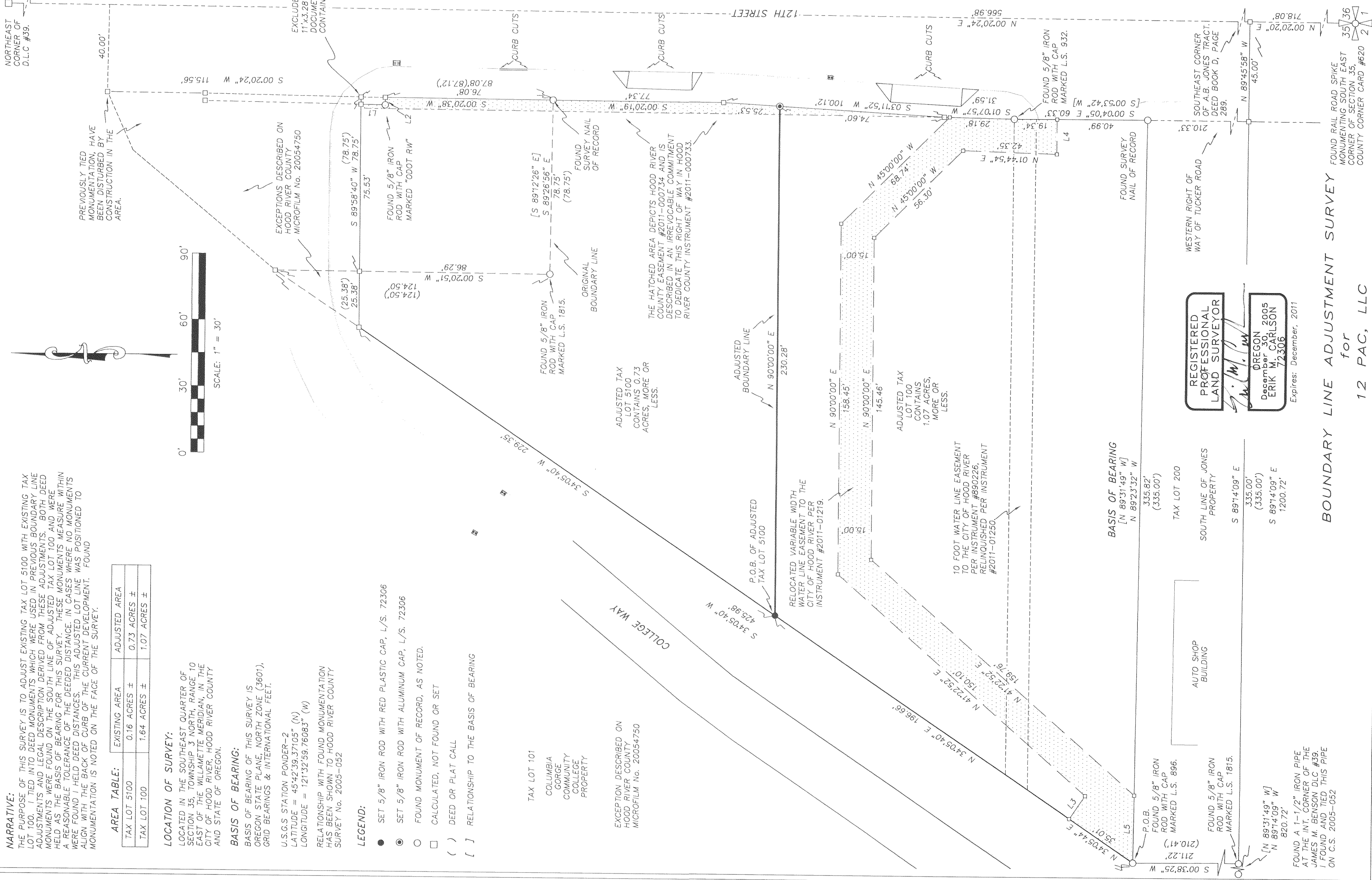


HOOD RIVER COUNTY SURVEYOR'S OFFICE
 CS# 2011 018
 DATE FILED: 6-1-11
 BY: [Signature]

LINE	BEARING	DISTANCE
L1	S 00°20'38" W	11.00'
L2	S 89°58'40" E	3.28'
L3	N 55°46'05" W	12.57'
L4	N 89°55'00" E	15.75'
L5	N 89°23'26" W	30.38'



NARRATIVE:
 THE PURPOSE OF THIS SURVEY IS TO ADJUST EXISTING TAX LOT 5100 WITH EXISTING TAX LOT 100. IT TIED INTO DEED MONUMENTS WHICH WERE USED IN PREVIOUS BOUNDARY LINE ADJUSTMENTS AND LEGAL DESCRIPTION DERIVED FROM THESE ADJUSTMENTS. BOTH DEED MONUMENTS WERE FOUND ON THE SOUTH LINE OF ADJUSTED TAX LOT 100 AND WERE HELD AS THE BASIS OF BEARING FOR THIS SURVEY. THESE MONUMENTS MEASURE WITHIN A REASONABLE TOLERANCE OF THE DEEDED DISTANCE. IN CASES WHERE NO MONUMENTS WERE FOUND I HELD DEED DISTANCES. THIS ADJUSTED LOT LINE WAS POSITIONED TO ALIGN WITH THE BACK OF CURB OF THE CURRENT DEVELOPMENT. FOUND MONUMENTATION IS NOTED ON THE FACE OF THE SURVEY.

AREA TABLE:

EXISTING AREA	ADJUSTED AREA
TAX LOT 5100 0.16 ACRES ±	0.73 ACRES ±
TAX LOT 100 1.64 ACRES ±	1.07 ACRES ±

LOCATION OF SURVEY:
 LOCATED IN THE SOUTHEAST QUARTER OF SECTION 35, TOWNSHIP 3 NORTH, RANGE 10 EAST OF THE WILLAMETTE MERIDIAN, IN THE CITY OF HOOD RIVER, HOOD RIVER COUNTY AND STATE OF OREGON.

BASIS OF BEARING:
 BASIS OF BEARING OF THIS SURVEY IS OREGON STATE PLANE NORTH ZONE (3601), GRID BEARINGS & INTERNATIONAL FEET.

U.S.G.S STATION PONDER-2
 LATITUDE = 45°42'39.37105" (N)
 LONGITUDE = 121°32'59.76083" (W)

RELATIONSHIP WITH FOUND MONUMENTATION HAS BEEN SHOWN TO HOOD RIVER COUNTY SURVEY No. 2005-052

- LEGEND:**
- SET 5/8" IRON ROD WITH RED PLASTIC CAP, L/S. 72306
 - ⊙ SET 5/8" IRON ROD WITH ALUMINUM CAP, L/S. 72306
 - FOUND MONUMENT OF RECORD, AS NOTED.
 - CALCULATED, NOT FOUND OR SET
 - () DEED OR PLAT CALL
 - [] RELATIONSHIP TO THE BASIS OF BEARING

TAX LOT 101
 COLUMBIA GORGE COMMUNITY COLLEGE PROPERTY

EXCEPTION DESCRIBED ON HOOD RIVER COUNTY MICROFILM No. 2005-4750

ADJUSTED TAX LOT 5100 CONTAINS 0.73 ACRES, MORE OR LESS.

ADJUSTED TAX LOT 100 CONTAINS 1.07 ACRES, MORE OR LESS.

10 FOOT WATER LINE EASEMENT TO THE CITY OF HOOD RIVER PER INSTRUMENT #890226, RELINQUISHED PER INSTRUMENT #2011-01250.

BASIS OF BEARING
 [N 89°31'49" W]
 N 89°23'32" W

REGISTERED PROFESSIONAL LAND SURVEYOR
 OREGON
 December 30, 2005
 ERIK M. CARLSON
 72306
 Expires: December, 2011

BOUNDARY LINE ADJUSTMENT SURVEY
 for
 12 PAC, LLC

TERRA SURVEYING

DATE OF MONUMENTATION: 3-28-11
 SCALE: 1" = 30'
 PROJECT: 10080TOPO
 ASSESSORS MAP: 3N 10E 35DD
 P.O. BOX 617
 HOOD RIVER, OREGON 97031
 PHONE & FAX: (541) 386-4531
 terra@terra.net
 www.terrasurveying.com

FOUND A 1-1/2" IRON PIPE AT THE INT. CORNER OF THE JAMES M. BENSON DLC #39. I FOUND AND TIED THIS PIPE ON C.S. 2005-052

CS 2011 018

RECEIVED MAY 9 5 2011

CS 2011 018