

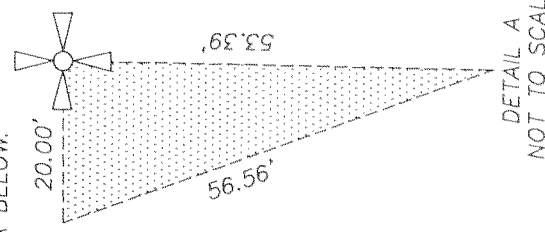
HOOD RIVER COUNTY SURVEYOR'S OFFICE
CS# 2011 017
DATE FILED: 6/1/11
BY: [Signature]

3" HOOD RIVER COUNTY BRASS CAP FOUND OF RECORD.
N 89°37'23" W 2644.07'
8
17

FOUND HOOD RIVER COUNTY BRASS CAP FOR SECTION CORNER 7/8/17/18 SET IN 1993.
A TRIANGLE CORNER EASEMENT No. 20011954 PERPETUAL, NON-EXCLUSIVE EASEMENT FOR INGRESS, EGRESS & INSTALLATION & MAINTENANCE OF UTILITIES OVER, UNDER AND ACROSS THAT PORTION OF TAX LOT 102 BEING ADJUSTED. SEE DETAIL A BELOW.

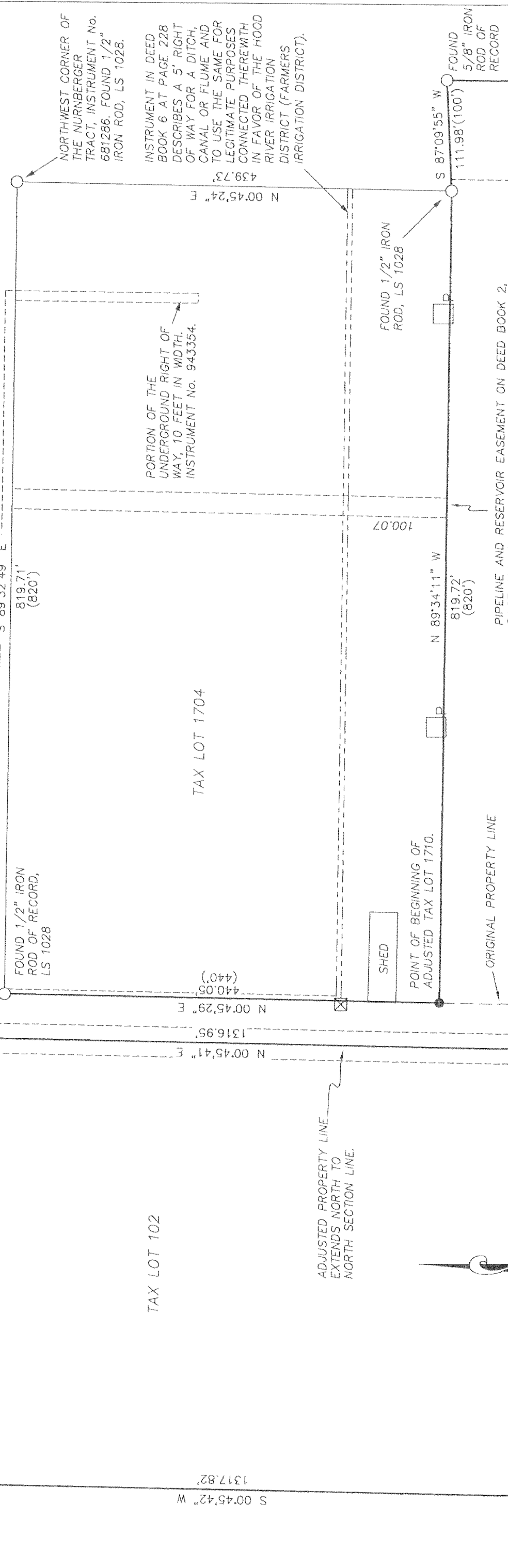
FOUND HOOD RIVER COUNTY MONUMENT OF RECORD.
846.10'
FOUND 5/8" IRON ROD OF RECORD, LS 2393
S 89°24'16" W 495.14'
BASIS OF BEARING
10' X 40' PACIFICORP EASEMENT #2010-03211, THE LOCATION IS DICTATED BY THE LOCATION OF THE UTILITY.
INSTRUMENT No. 840218 RESERVES A NONEXCLUSIVE EASEMENT 40 FEET IN WIDTH FOR ROADWAY & UTILITY PURPOSES OVER AND ACROSS TAX LOT 102.
INSTRUMENT No. 802490 GRANTS A 40 FOOT EASEMENT OVER & ACROSS THE NORTH 40 FEET OF TAX LOT 102, THE PURPOSE OF THE EASEMENT IS NOT STATED.
THIS LINE REPRESENTS THE WEST LINE OF THE 30 FOOT EASEMENT #840791 FOR ROAD AND UTILITY. 30'
THIS LINE REPRESENTS THE WEST LINE OF THE 60 FOOT EASEMENT #732062 FOR INGRESS, GRESS AND UTILITY. 60'

ADDITIONAL EASEMENT NOTES:
INSTRUMENT No. 811498 GRANTS PACIFIC POWER A 10 FOOT EASEMENT FOR AN ELECTRIC UNDERGROUND DISTRIBUTION SYSTEM AND RIGHTS FOR THE FUNCTIONING OF THE SYSTEM WITHIN THE NORTH 100 FEET OF TAX LOT 102
INSTRUMENT No. 912256 GRANTS AN EASEMENT IN GROSS TO MICHAEL AND DENISE McORAVEY ACROSS THE EAST 20 FOOT OF TAX LOT 102, PIPELINE AND RESERVOIR EASEMENT FROM 1909 IN BOOK 2, PAGE 428 AFFECTS TAX LOT 1710, LOCATION IS NON-SPECIFIC.
FARMERS IRRIGATION DISTRICT EASEMENT, BOOK 6, PAGE 228 APPEARS ON THE TITLE REPORT FOR TAX LOT 1710. DOES NOT APPEAR TO GO THROUGH THIS PROPERTY DIRECTLY BUT MAY STILL HAVE RIGHTS IN THE AREA.



DETAIL A
NOT TO SCALE

PP & L 10 FOOT RIGHT OF WAY EASEMENT FOR UNDERGROUND DISTRIBUTION LINE. SEE INSTRUMENT 943354.



REFERENCES:

- HOOD RIVER COUNTY DEED No. 732062
- HOOD RIVER COUNTY DEED No. 802490
- HOOD RIVER COUNTY DEED No. 811498
- HOOD RIVER COUNTY DEED No. 840218
- HOOD RIVER COUNTY DEED No. 840791
- HOOD RIVER COUNTY DEED No. 911997
- HOOD RIVER COUNTY DEED No. 912256
- HOOD RIVER COUNTY DEED No. 20011954
- HOOD RIVER COUNTY DEED No. 201003211
- HOOD RIVER COUNTY DEED BOOK 2, PAGE 428
- HOOD RIVER COUNTY DEED BOOK 6, PAGE 228
- HOOD RIVER COUNTY DEED No. 840791
- HOOD RIVER COUNTY DEED No. 943354
- HOOD RIVER COUNTY SURVEY No. 20013544
- HOOD RIVER COUNTY SURVEY No. 78079
- HOOD RIVER COUNTY SURVEY No. 83072
- HOOD RIVER COUNTY SURVEY No. 88054
- HOOD RIVER COUNTY SURVEY No. 88077
- HOOD RIVER COUNTY SURVEY No. 91030
- HOOD RIVER COUNTY SURVEY No. 91078
- HOOD RIVER COUNTY SURVEY No. 93072
- HOOD RIVER COUNTY SURVEY No. 93700
- HOOD RIVER COUNTY SURVEY No. 94006
- HOOD RIVER COUNTY SURVEY No. 99009
- HOOD RIVER COUNTY SURVEY No. 2001058
- HOOD RIVER COUNTY SURVEY No. 2002032
- SURVEY IN THE NORTH EAST QUARTER OF SECTION 18 BY JOHN L. HENDERSON IN 1908.
- SURVEY IN THE NORTH HALF OF SECTION 17 BY JOHN L. HENDERSON IN 1908.
- SURVEY OF THE JOS. E. HALL JR. & THE EMMA B. CARROLL LANDS BY L.A. HENDERSON, MAY 22, 1917.
- HOOD RIVER COUNTY COMMISSIONER'S JOURNAL, BOOK 5 AT PAGE 544, JULY 15, 1970.
- UNRECORDED PRELIMINARY PLAT BY W.P. FORD OF YORK HILL ESTATES, PREPARED ABOUT 1971.
- HOOD RIVER COUNTY COMMISSIONER'S JOURNAL, BOOK 5 AT PAGE 140, DATED APRIL 5, 1972.

AREA TABLE:

TAX LOT	EXISTING PARCEL SIZE	ADJUSTED PARCEL SIZE
TAX LOT 102	14.97 ACRES, ±	13.61 ACRES, ±
TAX LOT 1710	19.75 ACRES, ±	21.11 ACRES, ±

LINE	BEARING	DISTANCE
L1	N 89°29'39" E	4.88'

REGISTERED PROFESSIONAL LAND SURVEYOR
[Signature]
OREGON 2005
December 30
ERIK M. CARLSON
72306
Expires: December, 2011

TERRA SURVEYING

DATE MONUMENTED: APRIL 25, 2011
SCALE: 1" = 100'
PROJECT: 11028
ASSESSORS MAP: 2N-10E-17
2N-10E-18
P.O. BOX 617
HOOD RIVER, OREGON 97031
PHONE & FAX: (541) 386-4531
terra@gorge.net
www.terralandsurveying.com

- LEGEND:
- SET 5/8" X 30" IRON ROD WITH PLASTIC CAP
 - FOUND 5/8" IRON ROD LS 1815, UNLESS OTHERWISE NOTED ON FACE OF SURVEY
 - CALCULATED, NOT FOUND OR SET
 - () DEED OR PLAT CALL
 - ⊕ POWER POLE
 - ⊞ POWER TRANSFORMER
 - POWER VAULT

LOCATION OF SURVEY:

A PORTION OF THE NORTHWEST QUARTER OF SECTION 17 AND A PORTION OF THE NORTHEAST QUARTER OF SECTION 18, ALL IN TOWNSHIP 2 NORTH, RANGE 10 EAST, W.M., HOOD RIVER COUNTY, OREGON.

BOUNDARY LINE ADJUSTMENT SURVEY
for
SAKURAMBO, LLC

RECEIVED MAY 25 2011

CS 2011 017

CS 2011 017