

TERRA SURVEYING

HOOD RIVER COUNTY
SURVEYOR'S OFFICE
CS# 2011 004
DATE FILED: 2-15-11
BY: RJ

NARRATIVE:

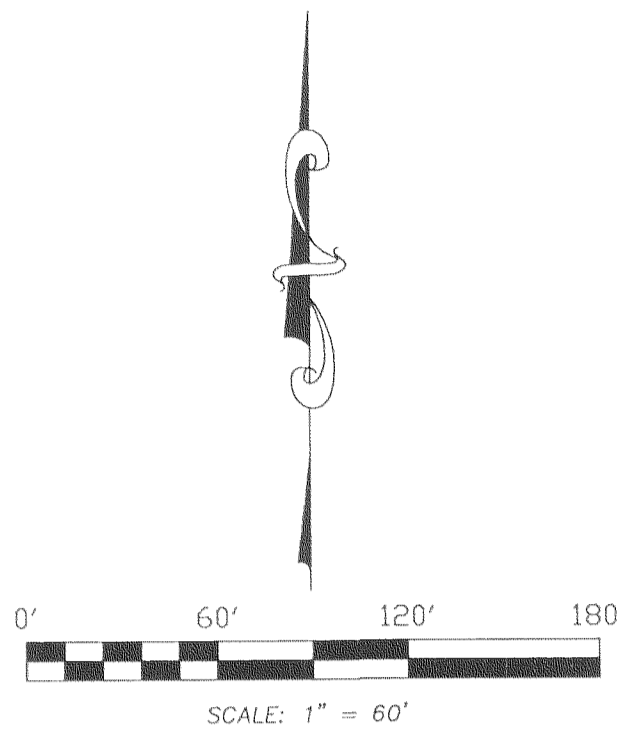
THIS PURPOSE OF THIS SURVEY IS TO PROVIDE A MAP SHOWING THE MONUMENTS SET ON TAX LOT 200 IN BY ROY GAYLORD LS 1815 IN AUGUST OF 1999. THE MONUMENTS WERE SET TO MONUMENT A PROPOSED SUBDIVISION WHICH WAS NOT COMPLETED. THE MONUMENTS SHOWN ON THE FACE OF THIS SURVEY ARE SHOWN WITH TIES TO MONUMENTATION FOUND IN AUGUST OF 1999. NO ADDITIONAL FIELD WORK HAS BEEN COMPLETED ON THIS PROJECT. EASEMENTS MAY OR MAY NOT BE SHOWN.

REFERENCES:

HOOD RIVER COUNTY PARTITION PLAT #9515
COMMISSIONER'S JOURNAL, BOOK 2 AT PAGE 446, OF 1/07/1931.

LEGEND:

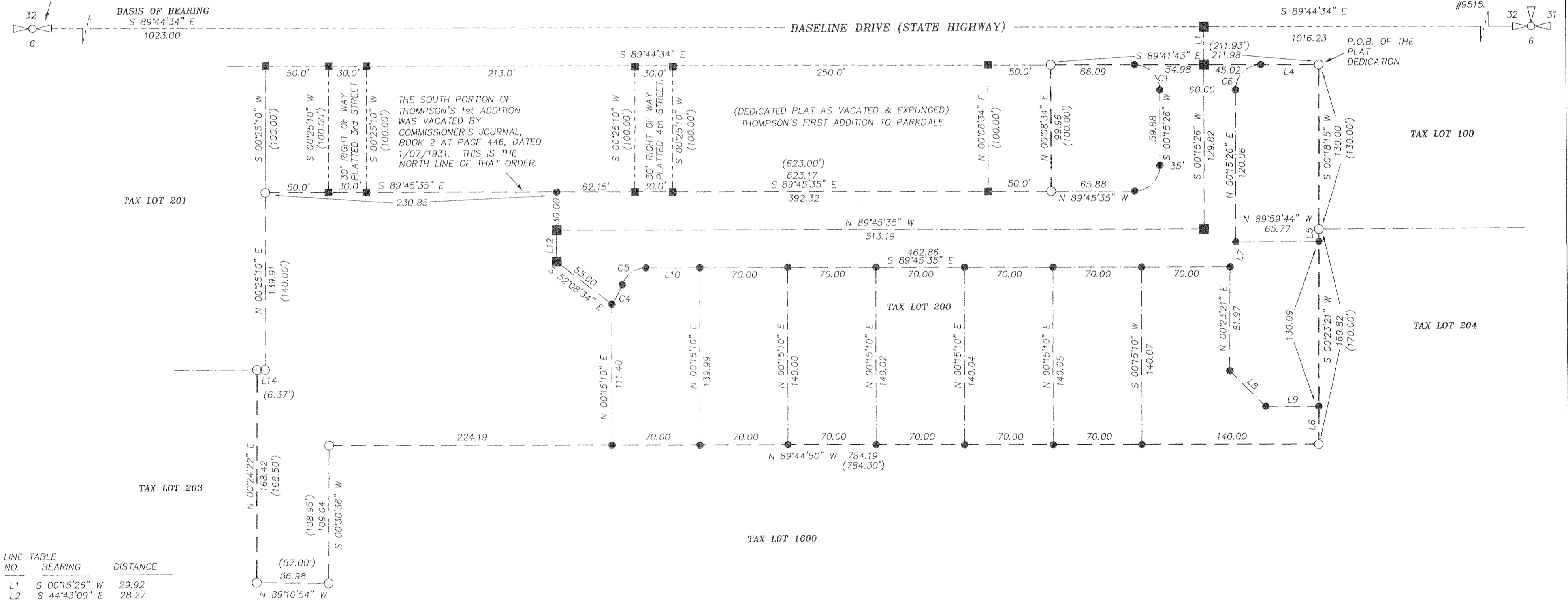
- FOUND 5/8" IRON ROD LS 1815
- FOUND LS 1028 5/8" IRON RODS OF PLAT RECORD
- CALCULATED, NOT FOUND OR SET
- () DEED OR PLAT CALL



BASIS OF BEARING:
EAST - WEST SECTION LINE OF PARTITION PLAT No. 9515.

FOUND RAILROAD SPIKE SET FOR THE QUARTER CORNER SHOWN ON THE SURVEY FOR WILLIAM HOPPER, COUNTY RECORDER'S PARTITION PLAT #9515.

3" BRASS CAP MONUMENTING THE CORNER COMMON TO SECTIONS 31 & 32 FROM PARTITION PLAT #9515.



LINE NO.	BEARING	DISTANCE
L1	S 00°15'26" W	29.92
L2	S 44°43'09" E	28.27
L3	N 45°16'51" E	28.30
L4	S 89°41'43" E	45.89
L5	S 00°23'21" W	9.73
L6	S 00°23'21" W	30.00
L7	N 13°24'13" E	20.25
L8	N 45°05'50" W	39.86
L9	N 89°36'39" W	41.91
L10	S 89°45'35" E	42.86
L11	N 28°47'20" E	17.35
L12	S 00°14'25" W	25.00
L13	N 54°58'32" E	23.09
L14	N 89°42'29" E	6.37
L15	S 45°14'55" W	28.28

CURVE NO.	DELTA	RADIUS	LENGTH
C1	89°57'09"	20.00	31.40
C2	89°58'59"	20.00	31.41
C3	232°22'59"	55.00	223.07
C4	18°08'46"	55.00	17.42
C5	70°31'45"	20.00	24.62
C6	90°02'51"	20.00	31.43

REGISTERED PROFESSIONAL LAND SURVEYOR
Roy O. Gaylord
OREGON
JULY 13, 1979
ROY O. GAYLORD
1815

RENEW: 6/30/11

MONUMENT LOCATION SURVEY
for
GLACIERVIEW ESTATES

LOCATION OF SURVEY:
NORTHWEST QUARTER OF THE NORTHEAST QUARTER OF SECTION 6, TOWNSHIP 1 SOUTH, RANGE 10 EAST, W.M., HOOD RIVER COUNTY, OREGON.

TERRA SURVEYING
DATE: JANUARY 31, 2011
SCALE: 1" = 60'
PROJECT: 9963
ASSESSORS MAP: 1S-10E-6
P.O. BOX 617
HOOD RIVER, OREGON 97031
PHONE & FAX: (541) 386-4531
terra@gorge.net
www.terrandsurveying.com