

HOOD RIVER COUNTY SURVEYOR'S OFFICE
CS# 2011003
DATE FILED: 2-14-11
BY: RL

Table with 6 columns: CURVE, RADIUS, ARC LENGTH, CHORD BEARING, CHORD LENGTH, DELTA ANGLE. Contains data for curves C1 through C6.

- LEGEND: SET 5/8" IRON ROD WITH RED PLASTIC CAP, FOUND MONUMENT OF RECORD, AS NOTED, FOUND 5/8" ROD WITH ALUMINUM CAP, L.S. 72306, CALCULATED, NOT FOUND OR SET, DEED OR PLAT CALL
- LINE LEGEND: FENCE LINE

NOTES: As per O.R.S. 92.120(3) I, Erik M. Carlson, certify this plat to be an exact copy of the original plat recorded in the county recorders office.

File Number 201101P
Instrument received on the January day of 27th, 2011 at 9:04 A.M.
Shah Lay - Clerk
Hood River County Director of Records and Assessments.

SURVEYOR'S CERTIFICATE
I, Erik M. Carlson, being first duly sworn, depose and say that I have correctly surveyed and marked with proper monuments the lands represented on this Partition Plat, the boundaries being described in Instrument #2006-3799 in Hood River County Records.

REGISTERED PROFESSIONAL LAND SURVEYOR
Erik M. Carlson
OREGON DECEMBER 30, 2009
ERIK M. CARLSON 72306
Expires: December, 2011

ACKNOWLEDGMENTS
We the owners of the land shown herein, hereby declare that this division of land has been made with our free consent and in accordance with our desires and hereby dedicate the access easement to the City of Cascade Locks.
OWNER: Ruby Mason 1/24/2011
This instrument was acknowledged before me on the 24 day of January, 2011 by Ruby Mason
a representative of Columbia Cascade Housing Corp.
Notary Signature: Elaine Junient

STATE OF OREGON }
COUNTY OF HOOD RIVER } s.s.
Subscribed and sworn to before me on this 24 day of January, 2011.
NOTARY PUBLIC - OREGON
COMMISSION NO. 4220063
MY COMMISSION EXPIRES APRIL 8, 2012

APPROVALS
I hereby certify that all taxes and assessments due hereon have been fully paid as required by law.
Hood River County Director of Budget and Finance, Treasurer/Tax Collector

I hereby certify this partition was examined and approved as of this 24th day of January, 2011.
Hood River County Surveyor

I hereby certify this partition was examined and approved and the dedication of the access easement to the City of Cascade Locks accepted as of this 24th day of January, 2011.
Planning File Number LU10-001
City of Cascade Locks Mayor

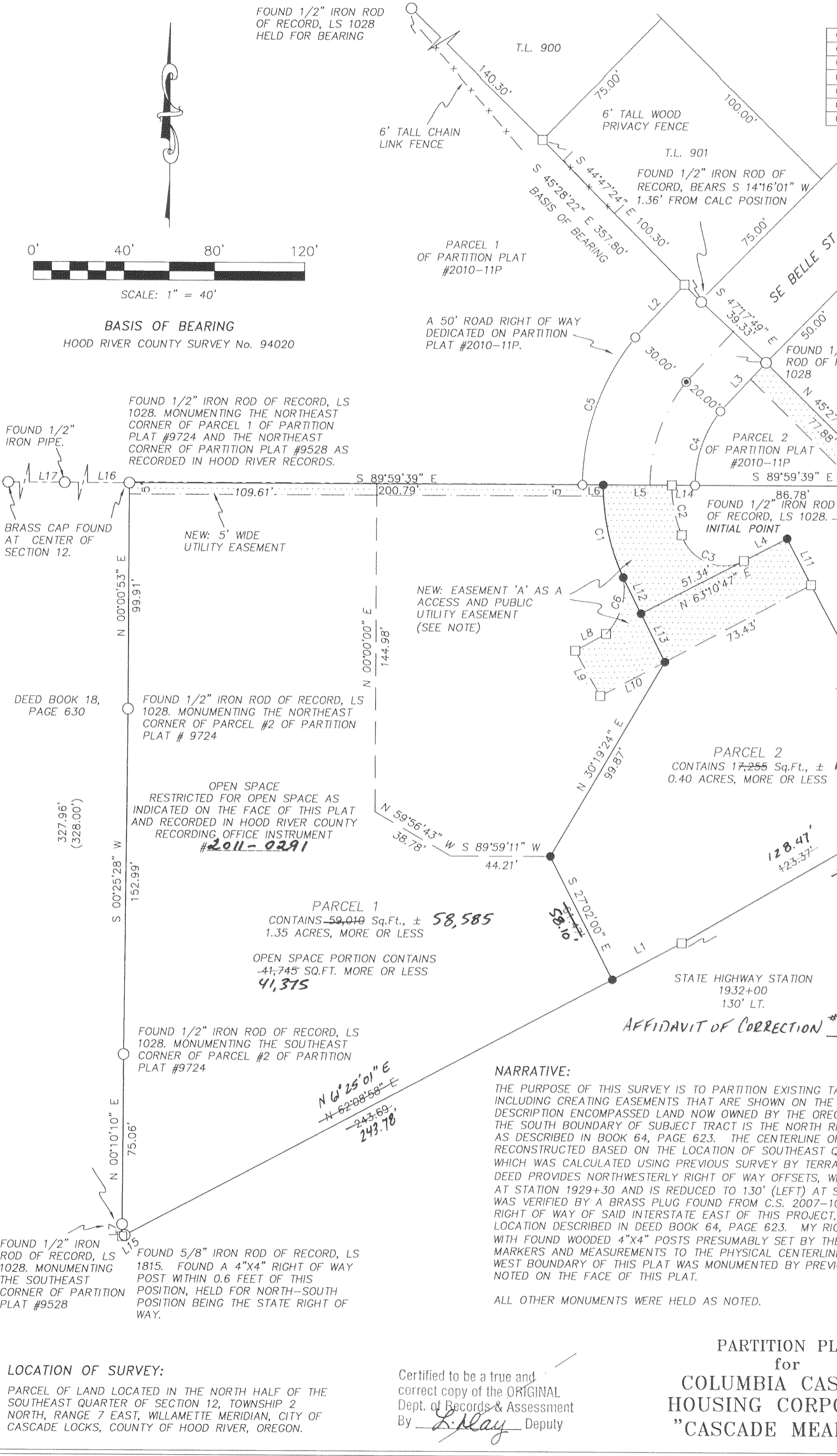


Table with 6 columns: CURVE, RADIUS, ARC LENGTH, CHORD BEARING, CHORD LENGTH, DELTA ANGLE. Contains data for curves C1 through C6.

- LEGEND: SET 5/8" IRON ROD WITH RED PLASTIC CAP, FOUND MONUMENT OF RECORD, AS NOTED, FOUND 5/8" ROD WITH ALUMINUM CAP, L.S. 72306, CALCULATED, NOT FOUND OR SET, DEED OR PLAT CALL
- LINE LEGEND: FENCE LINE

NOTES: As per O.R.S. 92.120(3) I, Erik M. Carlson, certify this plat to be an exact copy of the original plat recorded in the county recorders office.

ACKNOWLEDGMENTS
We the owners of the land shown herein, hereby declare that this division of land has been made with our free consent and in accordance with our desires and hereby dedicate the access easement to the City of Cascade Locks.
OWNER: Ruby Mason 1/24/2011
This instrument was acknowledged before me on the 24 day of January, 2011 by Ruby Mason
a representative of Columbia Cascade Housing Corp.
Notary Signature: Elaine Junient

STATE OF OREGON }
COUNTY OF HOOD RIVER } s.s.
Subscribed and sworn to before me on this 24 day of January, 2011.
NOTARY PUBLIC - OREGON
COMMISSION NO. 4220063
MY COMMISSION EXPIRES APRIL 8, 2012

APPROVALS
I hereby certify that all taxes and assessments due hereon have been fully paid as required by law.
Hood River County Director of Budget and Finance, Treasurer/Tax Collector

I hereby certify this partition was examined and approved as of this 24th day of January, 2011.
Hood River County Surveyor

I hereby certify this partition was examined and approved and the dedication of the access easement to the City of Cascade Locks accepted as of this 24th day of January, 2011.
Planning File Number LU10-001
City of Cascade Locks Mayor

NARRATIVE:
THE PURPOSE OF THIS SURVEY IS TO PARTITION EXISTING TAX LOT 100 INTO 3 PARCELS, INCLUDING CREATING EASEMENTS THAT ARE SHOWN ON THE PLAT. THE ORIGINAL DESCRIPTION ENCOMPASSED LAND NOW OWNED BY THE OREGON STATE HIGHWAY COMMISSION. THE SOUTH BOUNDARY OF SUBJECT TRACT IS THE NORTH RIGHT OF WAY OF INTERSTATE-84, AS DESCRIBED IN BOOK 64, PAGE 623. THE CENTERLINE OF INTERSTATE-84 WAS RECONSTRUCTED BASED ON THE LOCATION OF SOUTHEAST QUARTER OF THE SECTION 12, WHICH WAS CALCULATED USING PREVIOUS SURVEY BY TERRA SURVEYING (C.S. 88026). SAID DEED PROVIDES NORTHWESTERLY RIGHT OF WAY OFFSETS, WHICH VARIES FROM 150' (LEFT) AT STATION 1929+30 AND IS REDUCED TO 130' (LEFT) AT STATION 1932+00. THIS METHOD WAS VERIFIED BY A BRASS PLUG FOUND FROM C.S. 2007-104 MONUMENTING THE NORTHERN RIGHT OF WAY OF SAID INTERSTATE EAST OF THIS PROJECT, BUT WITHIN THE CENTERLINE LOCATION DESCRIBED IN DEED BOOK 64, PAGE 623. MY RIGHT OF WAY LOCATION AGREED WITH FOUND WOODED 4"x4" POSTS PRESUMABLY SET BY THE STATE AS RIGHT OF WAY MARKERS AND MEASUREMENTS TO THE PHYSICAL CENTERLINE OF THE INTERSTATE. THE WEST BOUNDARY OF THIS PLAT WAS MONUMENTED BY PREVIOUS PLATS COMPLETED AS NOTED ON THE FACE OF THIS PLAT.
ALL OTHER MONUMENTS WERE HELD AS NOTED.

PARTITION PLAT for COLUMBIA CASCADE HOUSING CORPORATION "CASCADE MEADOWS"

Certified to be a true and correct copy of the ORIGINAL Dept. of Records & Assessment By: Shah Lay Deputy

Table with 3 columns: LINE, BEARING, DISTANCE. Lists line measurements L1 through L20.

OWNER: COLUMBIA CASCADE HOUSING CORP. 312 COURT ST. SUITE 419 THE DALLES, OREGON 97058

TERRA SURVEYING
DATE MONUMENTED: DEC 22, 2010
SCALE: 1" = 40'
PROJECT: 10082
ASSESSORS MAP: 2N-7E-12DA
P.O. BOX 617
HOOD RIVER, OREGON 97031
PHONE & FAX: (541) 386-4531
E-Mail: terra@gorge.net

LOCATION OF SURVEY:
PARCEL OF LAND LOCATED IN THE NORTH HALF OF THE SOUTHEAST QUARTER OF SECTION 12, TOWNSHIP 2 NORTH, RANGE 7 EAST, WILLAMETTE MERIDIAN, CITY OF CASCADE LOCKS, COUNTY OF HOOD RIVER, OREGON.