

PARTITION PLAT for CITY OF CASCADE LOCKS

LOCATION OF SURVEY:

PARCEL OF LAND LOCATED IN GOVERNMENT LOT 10, SECTION 12, TOWNSHIP 2 NORTH, RANGE 7 EAST, WILLAMETTE MERIDIAN, CITY OF CASCADE LOCKS, COUNTY OF HOOD RIVER, OREGON.

Certified to be a true and correct copy of the ORIGINAL Dept. of Records & Assessment By S. Day Deputy

HOOD RIVER COUNTY SURVEYOR'S OFFICE CS# 2011 001 DATE FILED: 1-14-11 BY: [Signature]

File Number 2010 11P Instrument received on the 23rd day of DECEMBER, 2010 at 9:19 A.M.

Hood River County Director of Records and assessments.

OWNER: CITY OF CASCADE LOCKS

SURVEYOR'S CERTIFICATE

I, Erik M. Carlson, being first duly sworn, depose and say that I have correctly surveyed and marked with proper monuments the lands represented on this Partition Plat, the boundaries being described in Instrument #923337 in Hood River County Records.

REGISTERED PROFESSIONAL LAND SURVEYOR

[Signature]

OREGON DECEMBER 30, 2009 ERIK M. CARLSON 72306

Expires: December, 2011

ACKNOWLEDGMENTS

We the owners of the land shown herein, hereby declare that this division of land has been made with our free consent and in accordance with our desires and hereby dedicate the 50 foot right of way to the public as depicted on the face of this plat.

OWNER DATE

This instrument was acknowledged before me as a representative of City of Cascade Locks on the 22nd day of December, 2010 by Bernard Seeger, Notary Signature

STATE OF Oregon COUNTY OF Hood River } s.s. Subscribed and sworn to before me on this 22nd day of December, 2010

NOTARY PUBLIC - OREGON COMMISSION NO. 437530 MY COMMISSION EXPIRES March 16, 2013

APPROVALS

I hereby certify that all taxes and assessments due hereon have been fully paid as required by law.

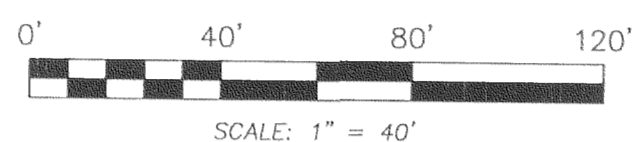
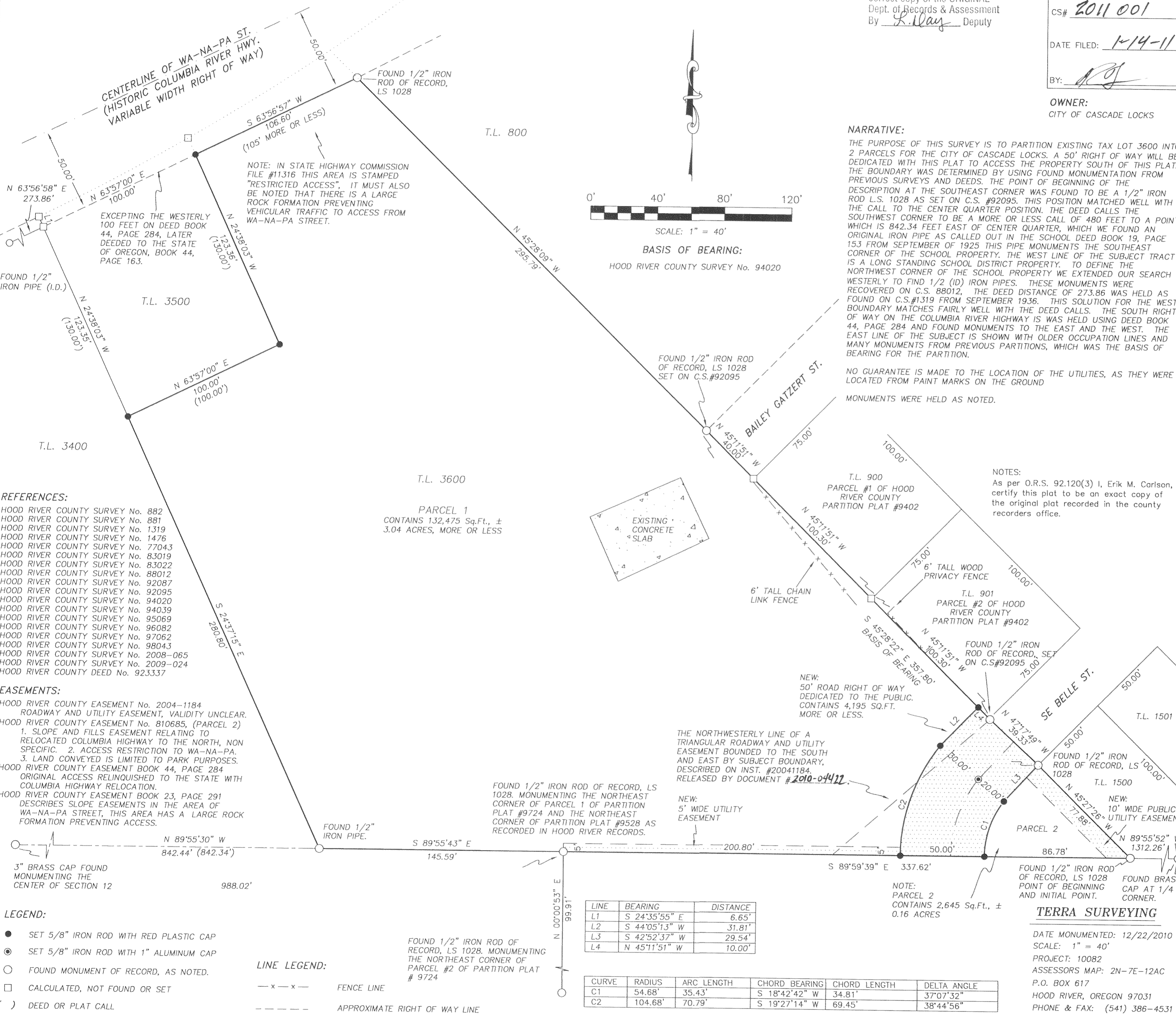
[Signature] Hood River County Director of Budget and Finance, Treasurer/Tax Collector

I hereby certify this partition was examined and approved as of this 23rd day of December, 2010

[Signature] Hood River County Surveyor

I hereby certify this partition was examined and approved, including road access dedicated to the City of Cascade Locks as of this 22nd day of December, 2010.

Planning File Number 10-010 [Signature] City of Cascade Locks Administrator



SCALE: 1" = 40'

BASIS OF BEARING: HOOD RIVER COUNTY SURVEY No. 94020

NARRATIVE: THE PURPOSE OF THIS SURVEY IS TO PARTITION EXISTING TAX LOT 3600 INTO 2 PARCELS FOR THE CITY OF CASCADE LOCKS. A 50' RIGHT OF WAY WILL BE DEDICATED WITH THIS PLAT TO ACCESS THE PROPERTY SOUTH OF THIS PLAT. THE BOUNDARY WAS DETERMINED BY USING FOUND MONUMENTATION FROM PREVIOUS SURVEYS AND DEEDS. THE POINT OF BEGINNING OF THE DESCRIPTION AT THE SOUTHEAST CORNER WAS FOUND TO BE A 1/2" IRON ROD L.S. 1028 AS SET ON C.S. #92095. THIS POSITION MATCHED WELL WITH THE CALL TO THE CENTER QUARTER POSITION. THE DEED CALLS THE SOUTHWEST CORNER TO BE A MORE OR LESS CALL OF 480 FEET TO A POINT WHICH IS 842.34 FEET EAST OF CENTER QUARTER, WHICH WE FOUND AN ORIGINAL IRON PIPE AS CALLED OUT IN THE SCHOOL DEED BOOK 19, PAGE 153 FROM SEPTEMBER OF 1925 THIS PIPE MONUMENTS THE SOUTHEAST CORNER OF THE SCHOOL PROPERTY. THE WEST LINE OF THE SUBJECT TRACT IS A LONG STANDING SCHOOL DISTRICT PROPERTY. TO DEFINE THE NORTHWEST CORNER OF THE SCHOOL PROPERTY WE EXTENDED OUR SEARCH WESTERLY TO FIND 1/2 (ID) IRON PIPES. THESE MONUMENTS WERE RECOVERED ON C.S. 88012, THE DEED DISTANCE OF 273.86 WAS HELD AS FOUND ON C.S.#1319 FROM SEPTEMBER 1936. THIS SOLUTION FOR THE WEST BOUNDARY MATCHES FAIRLY WELL WITH THE DEED CALLS. THE SOUTH RIGHT OF WAY ON THE COLUMBIA RIVER HIGHWAY IS WAS HELD USING DEED BOOK 44, PAGE 284 AND FOUND MONUMENTS TO THE EAST AND THE WEST. THE EAST LINE OF THE SUBJECT IS SHOWN WITH OLDER OCCUPATION LINES AND MANY MONUMENTS FROM PREVIOUS PARTITIONS, WHICH WAS THE BASIS OF BEARING FOR THE PARTITION.

NO GUARANTEE IS MADE TO THE LOCATION OF THE UTILITIES, AS THEY WERE LOCATED FROM PAINT MARKS ON THE GROUND MONUMENTS WERE HELD AS NOTED.

NOTES: As per O.R.S. 92.120(3) I, Erik M. Carlson, certify this plat to be an exact copy of the original plat recorded in the county records office.

- REFERENCES: HOOD RIVER COUNTY SURVEY No. 882, HOOD RIVER COUNTY SURVEY No. 881, HOOD RIVER COUNTY SURVEY No. 1319, HOOD RIVER COUNTY SURVEY No. 1476, HOOD RIVER COUNTY SURVEY No. 77043, HOOD RIVER COUNTY SURVEY No. 83019, HOOD RIVER COUNTY SURVEY No. 83022, HOOD RIVER COUNTY SURVEY No. 88012, HOOD RIVER COUNTY SURVEY No. 92087, HOOD RIVER COUNTY SURVEY No. 92095, HOOD RIVER COUNTY SURVEY No. 94020, HOOD RIVER COUNTY SURVEY No. 94039, HOOD RIVER COUNTY SURVEY No. 95069, HOOD RIVER COUNTY SURVEY No. 96082, HOOD RIVER COUNTY SURVEY No. 97062, HOOD RIVER COUNTY SURVEY No. 98043, HOOD RIVER COUNTY SURVEY No. 2008-065, HOOD RIVER COUNTY SURVEY No. 2009-024, HOOD RIVER COUNTY DEED No. 923337

- EASEMENTS: HOOD RIVER COUNTY EASEMENT No. 2004-1184 ROADWAY AND UTILITY EASEMENT, VALIDITY UNCLER. HOOD RIVER COUNTY EASEMENT No. 810685, (PARCEL 2) 1. SLOPE AND FILLS EASEMENT RELATING TO RELOCATED COLUMBIA HIGHWAY TO THE NORTH, NON SPECIFIC. 2. ACCESS RESTRICTION TO WA-NA-PA. 3. LAND CONVEYED IS LIMITED TO PARK PURPOSES. HOOD RIVER COUNTY EASEMENT BOOK 44, PAGE 284 ORIGINAL ACCESS RELINQUISHED TO THE STATE WITH COLUMBIA HIGHWAY RELOCATION. HOOD RIVER COUNTY EASEMENT BOOK 23, PAGE 291 DESCRIBES SLOPE EASEMENTS IN THE AREA OF WA-NA-PA STREET, THIS AREA HAS A LARGE ROCK FORMATION PREVENTING ACCESS.

- LEGEND: SET 5/8" IRON ROD WITH RED PLASTIC CAP, SET 5/8" IRON ROD WITH 1" ALUMINUM CAP, FOUND MONUMENT OF RECORD, AS NOTED, CALCULATED, NOT FOUND OR SET, DEED OR PLAT CALL

- LINE LEGEND: FENCE LINE, APPROXIMATE RIGHT OF WAY LINE

Table with 3 columns: LINE, BEARING, DISTANCE. Rows L1, L2, L3, L4.

Table with 6 columns: CURVE, RADIUS, ARC LENGTH, CHORD BEARING, CHORD LENGTH, DELTA ANGLE. Rows C1, C2.