

HOOD RIVER COUNTY SURVEYOR'S OFFICE
CS# 2010 056
DATE FILED: 11-17-10
BY: [Signature]

FOUND A BRASS CAP ON TOP OF STEEP BLUFF, THIS ROD IS MONUMENTING THE CENTER QUARTER OF SECTION 30. IT WAS SET ON HOOD RIVER COUNTY SURVEY #80082. TERRAIN DIFFICULT IN THIS AREA.

NARRATIVE:
THE PURPOSE OF THIS SURVEY IS TO RESET THE QUARTER SECTION CORNER COMMON TO SECTION 30 AND SECTION 31. THIS CORNER HAS BEEN DISTURBED BY EARTH WORK COMPLETED IN THE AREA. I STARTED THIS CORNER REPLACEMENT WITH THE SECTION CORNER REFERENCE CARD LOCATED AT THE OFFICE OF THE COUNTY SURVEYOR. THIS CORNER CARD REFERENCES 2 BEARING TREES WITH DISTANCES AND BEARINGS. UNFORTUNATELY BOTH BEARING TREES WERE REMOVED AT SOME POINT IN HISTORY LEAVING NO ABILITY TO REPLACE THIS CORNER BY HOLDING THESE MEASUREMENTS. THE NEXT OPTION IS TO LOOK AT DIFFERENT SURVEYS COMPLETED IN THE AREA WHICH TIED INTO THIS CORNER. THIS WOULD PROVIDE ME WITH MEASUREMENTS TO REPLACE SECTION CORNER IN THE SAME POSITION AS OTHER SURVEYS HAVE TIES. I FOUND MONUMENTATION SET BASED ON THIS CORNER IN BOTH SECTION 31 AND SECTION 30. IN SECTION 30, ONE SURVEY APPLIES TO THIS CORNER. COUNTY SURVEY #80082 WAS COMPLETED IN 1980 FOR THE LANDS TO THE NORTH OF THIS CORNER. THIS SURVEY TIED INTO THE CENTER OF THE SECTION AND THE SOUTHWEST CORNER. WE TIED INTO BOTH OF THESE MONUMENTS. MANY MORE SURVEYS WERE COMPLETED IN SECTION 31. IN COUNTY SURVEY'S #2001-051, #2000-055 AND #0574 TIED INTO THIS CORNER MONUMENT AS LATE AS 2001. WE TIED INTO MONUMENTS ON ALL THREE SURVEYS.

I WAS UNABLE TO SHOW THAT ALL THESE SURVEY MEASUREMENTS AGREED. THE INTERSECTION POINT MEASURED FROM THE MONUMENTS TIED IN SECTION 30 WERE APPROXIMATELY 8 FEET WESTERLY FROM THE INTERSECTION POINT MEASURED FROM THE TIED MONUMENTS IN SECTION 31. IN MY OPINION, THE INTERSECTION POINT MEASURED FROM FOUND MONUMENTATION IN SECTION 31 WERE IN A MORE PROBABLE POSITION. THIS CONCLUSION WAS VALIDATED BY OLD COUNTY (8/18/24) AND FARMERS IRRIGATION RIGHT OF WAY MAPS (AUG 1, 1955) SHOWING THIS SECTION CORNER FALLING IN THE CENTERLINE OF EXISTING IRRIGATION CANAL. I USED A 3/4" IRON BOLT FOUND IN THE TOP OF THE BLUFF FROM C.S. #574 AND A 1/2" IRON ROD FOUND AT THE CENTER OF SECTION 31 ON C.S. 2001-051. THIS CORNER POSITION WAS BASED ON HISTORIC EASE OF MEASUREMENT FROM SAID IRON BOLT AND RELATIVELY RECENT TIE TO THE CENTER OF SECTION 31 IN THE FINAL RESOLUTION. A NEW CORNER REFERENCE CARD IS FILED WITH THE COUNTY SURVEYOR.

LOCATION OF SURVEY:

LOCATED IN THE NORTH HALF OF SECTION 31, TOWNSHIP 2 NORTH, RANGE 10 EAST AND THE SOUTH HALF OF SECTION 30, TOWNSHIP 2 N, RANGE 10 EAST ALL OF THE WILLAMETTE MERIDIAN AND COUNTY OF HOOD RIVER, STATE OF OREGON.

REFERENCES:

HOOD RIVER COUNTY SURVEY #574
HOOD RIVER COUNTY SURVEY #2000-055
HOOD RIVER COUNTY SURVEY #2001-051
HOOD RIVER COUNTY SURVEY #80082
HOOD RIVER COUNTY CORNER CARD #883
HOOD RIVER COUNTY SURVEY #7597
FARMERS IRRIGATION RIGHT OF WAY MAP DATED AUGUST 1ST 1955 BY M. PERKINS COUNTY CANAL LOCATION MAP DATED AUGUST 18TH 1924 BY C.M. HURLBURT

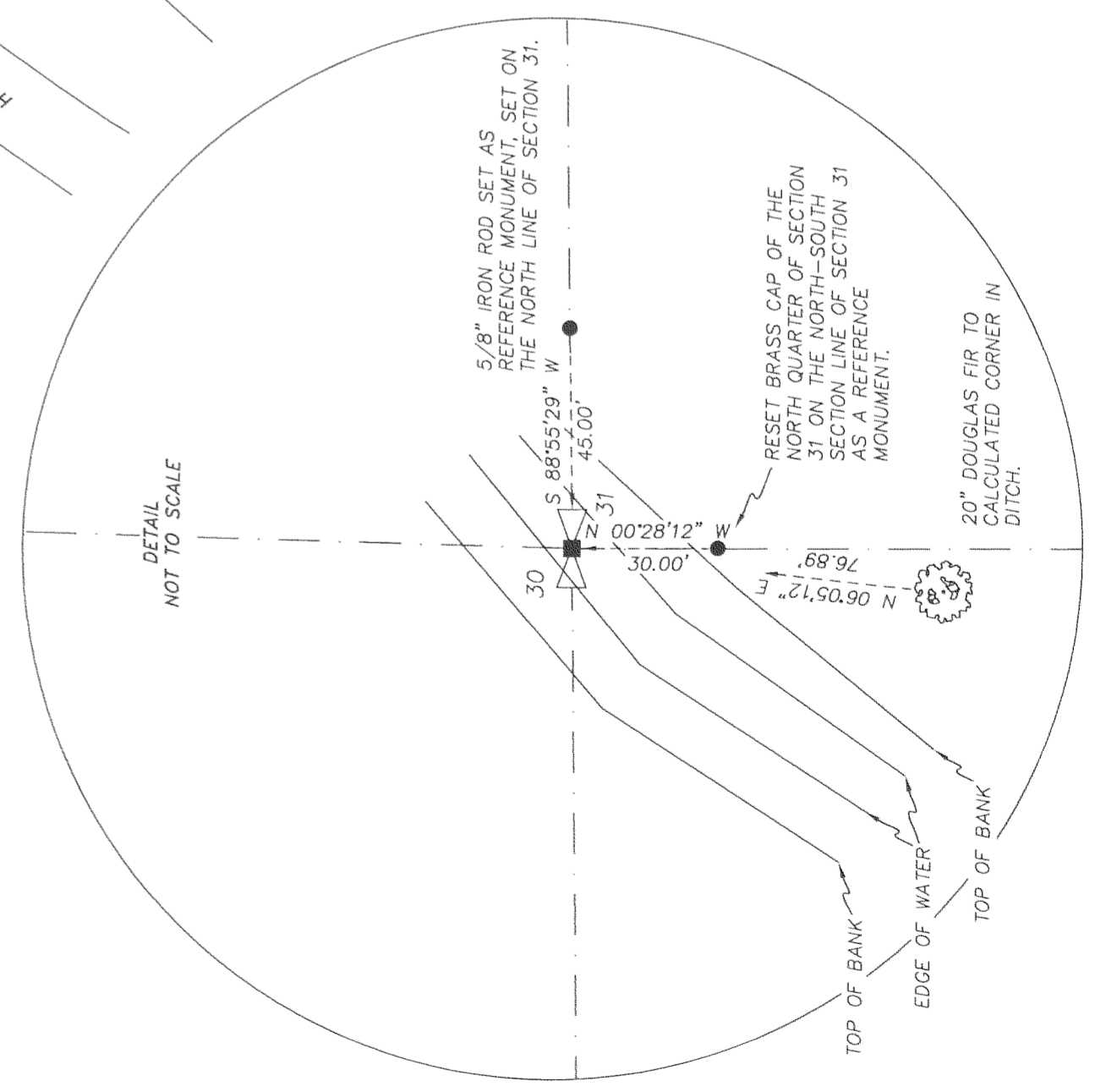
BASIS OF BEARING:

HOOD RIVER COUNTY SURVEY #80082 (USING SOLAR OBSERVATION.)

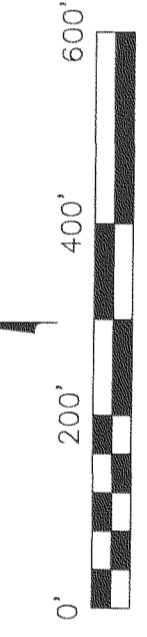
FOUND A 3" BRASS CAP MONUMENT AS SHOWN ON HOOD RIVER COUNTY SURVEY #80082. TERRAIN DIFFICULT IN THIS AREA.

RESET BRASS CAP OF THE NORTH QUARTER OF SECTION 31 ON THE NORTH-SOUTH SECTION LINE OF SECTION 31 AS A REFERENCE MONUMENT. I AM HOLDING THE DISTANCE TO A 1/2" IRON ROD SET BY L.S. 2393 ON C.S. 2001-051. IN A DISCUSSION WITH L.S. 2393 HE RECALLS NOT GETTING HIS FEET WET AS HE TIED THIS CORNER, BECAUSE THE DITCH HAS BEEN EXCAVATED. IN MY OPINION, IT IS QUITE POSSIBLE THAT THE MONUMENT WAS ON SET ON SEDIMENT THAT HAS NOW BEEN REMOVED.

DETAIL NOT TO SCALE



LEGEND:
● SET MONUMENT AS SHOWN
○ FOUND MONUMENT OF RECORD
■ CALCULATED, NOT FOUND OR SET
() DEED OR PLAT CALL



CORNER REPLACEMENT SURVEY for FARMERS IRRIGATION COMPANY

TERRA SURVEYING

REGISTERED PROFESSIONAL LAND SURVEYOR
[Signature]
OREGON December 30, 2005
ERIK M. CARLSON 72306
Expires: December, 2011

DATE MONUMENTED: JULY 19, 2010
SCALE: 1" = 200'
PROJECT: 10050
ASSESSORS MAPS: 2N 10E 30 & 31
P.O. BOX 617
HOOD RIVER, OREGON 97031
PHONE & FAX: (541) 386-4531
terra@gorge.net
www.terrasurveying.com

FOUND A 1/2" IRON ROD SET AT THE CENTER QUARTER OF SECTION 31 SHOWN ON HOOD RIVER COUNTY SURVEY #2000-055. TERRAIN FLAT WITH TREES. HELD DISTANCE FOR REMONUMENTATION.