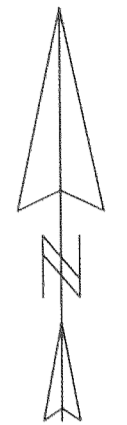


HOOD RIVER COUNTY  
 SURVEYOR'S OFFICE  
 SURVEY NO. **CS 2010 053**  
 FILED DATE: **11-2-10**  
 BY: *[Signature]*



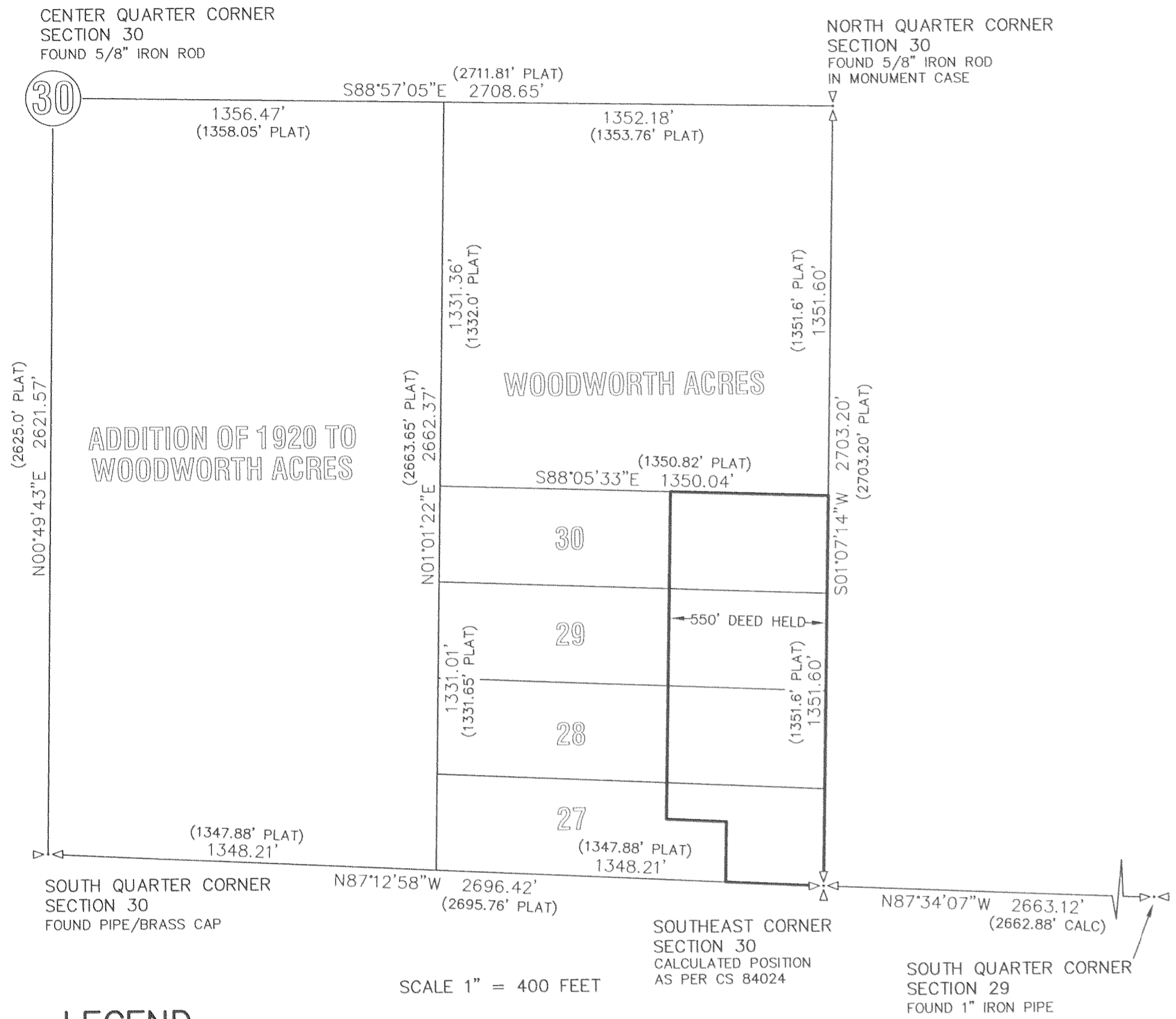
SCALE 1" = 100 FEET  
 BASIS OF BEARING: ASSUMED

REGISTERED  
 PROFESSIONAL  
 LAND SURVEYOR

*Kevin Dowd*

OREGON  
 JULY 26, 1989  
 KEVIN DOWD  
 2393

RENEW DATE: 12-31-11  
 OCTOBER 18, 2010



SCALE 1" = 400 FEET

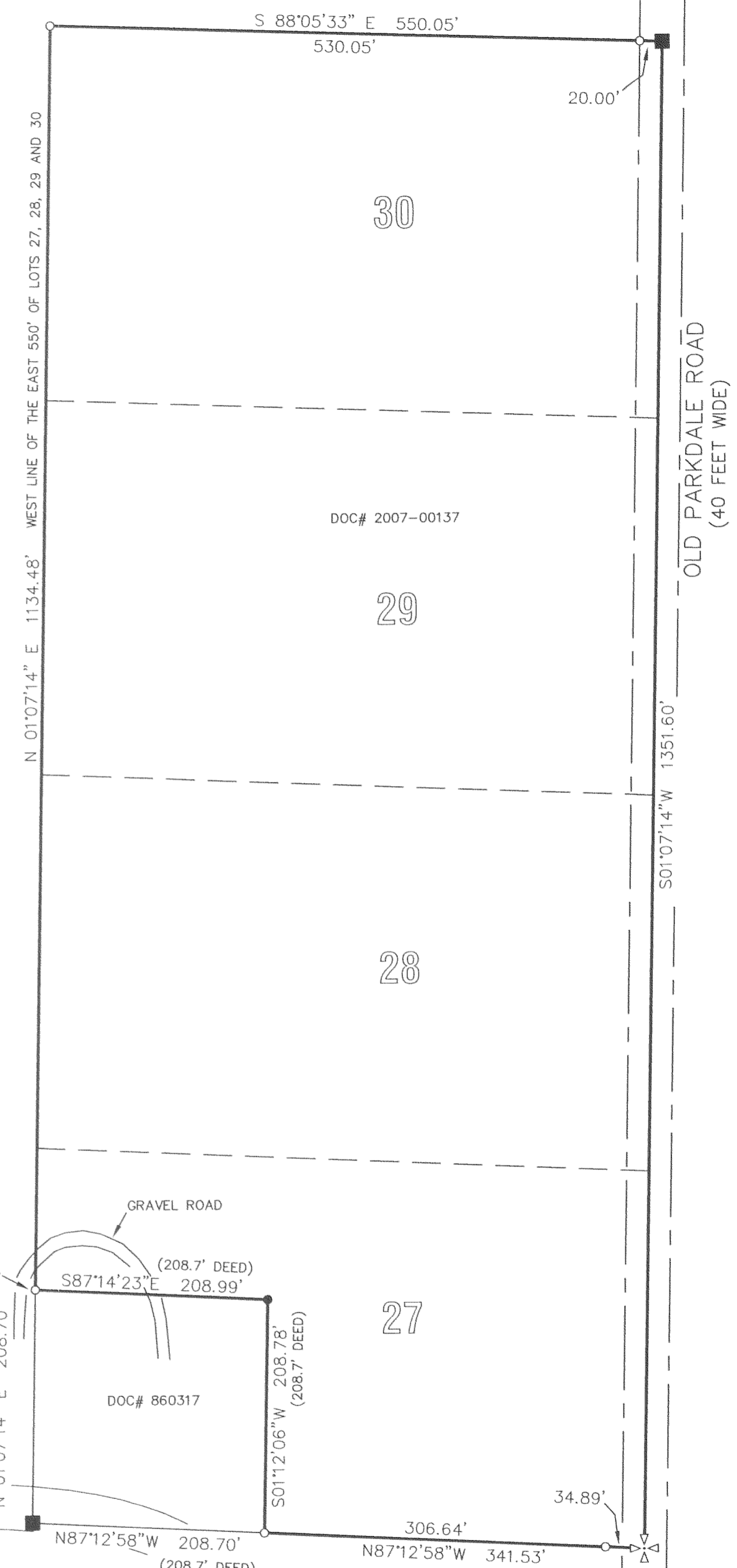
**LEGEND**

- SET 1/2" X 30" IRON ROD WITH YELLOW PLASTIC CAP MARKED "WYEAST LS 2393" EXCEPT AS NOTED
- FOUND IRON ROD AS PER CS 84024
- CALCULATED POSITION

**NARRATIVE**

THE PURPOSE OF THIS SURVEY IS TO ESTABLISH THE BOUNDARIES OF THAT TRACT OF LAND DESCRIBED IN DEED RECORDED AS DOC# 2007-00137. THE TRACT IS DESCRIBED AS THE EAST 550 FEET OF LOTS 27, 28, 29 AND 30, WOODWORTH ACRES EXCEPTING A TRACT IN THE SOUTHWEST CORNER THEREOF. THE SUBDIVISION LOT CORNERS WERE ESTABLISHED BY PRORATION USING PLAT DISTANCES FROM WOODWORTH ACRES AND THE ADDITION OF 1920 TO WOODWORTH ACRES. THE PRORATION WAS CALCULATED BETWEEN MONUMENTS FOUND AT THE NORTH, SOUTH AND CENTER QUARTER CORNERS AND A CALCULATED POSITION FOR THE SOUTHEAST SECTION CORNER. THE SOUTHEAST SECTION CORNER WAS CALCULATED AT PLAT DISTANCE FROM THE NORTH QUARTER CORNER AND AT A PRORATED POSITION BETWEEN THE SOUTH QUARTER CORNERS OF SECTIONS 29 AND 30. THE WEST PROPERTY LINE WAS ESTABLISHED PARALLEL WITH AND AT DEED DISTANCE FROM THE EAST LOT LINES. THE EXCEPTED TRACT HAD PREVIOUSLY BEEN SURVEYED BY CS 84024. AN IRON ROD WAS RECOVERED AND ACCEPTED FOR THE NORTHEAST CORNER OF THE EXCEPTED TRACT. THE SOUTHWEST CORNER WAS ESTABLISHED AS THE SOUTHWEST CORNER OF THE EAST 550 FEET OF LOT 27. THE SOUTHEAST AND NORTHWEST CORNERS OF THE EXCEPTED TRACT WERE ESTABLISHED AT DEED DISTANCE FROM THE SOUTHWEST CORNER.

DATE OF FIRST MONUMENTATION: OCTOBER 1, 2010



SOUTHEAST CORNER  
 SECTION 30  
 CALCULATED POSITION  
 AS PER CS 84024  
 FOUND 2 3/4" IRON PIPE  
 AT N86°33'06"W, 22.11'

**RECORD OF SURVEY**

A PORTION OF LOTS 27, 28, 29 AND 30  
 WOODWORTH ACRES  
 LOCATED IN THE SOUTHEAST QUARTER  
 OF SECTION 30  
 T1 NORTH, R10 EAST, W.M.  
 HOOD RIVER COUNTY, OREGON

**FOR: ELIZABETH KEITH**

WYEAST SURVEYS  
 KEVIN DOWD  
 4399 WOODWORTH DR  
 MT HOOD, OR 97041  
 (541) 352-6065