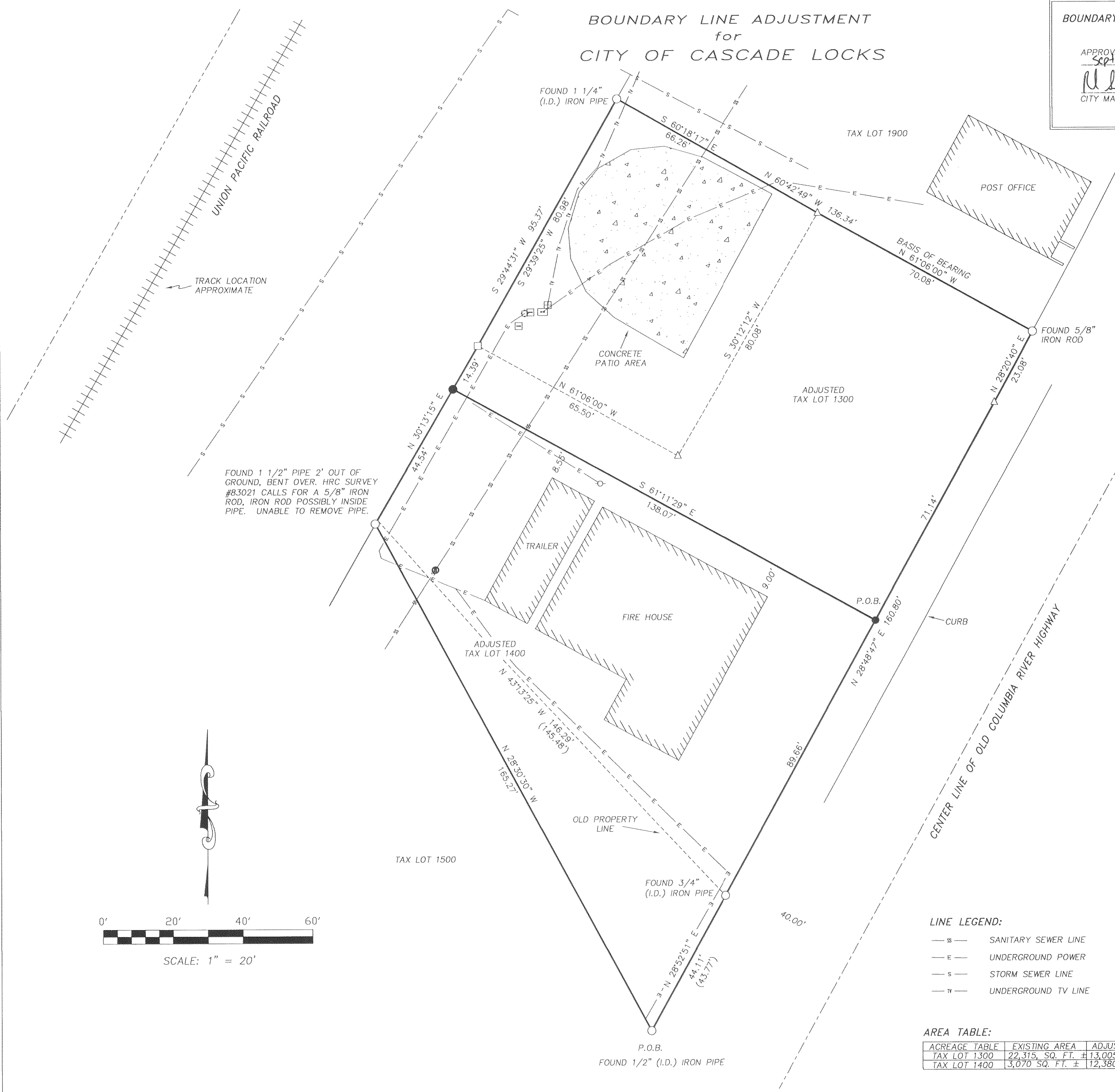


BOUNDARY LINE ADJUSTMENT
for
CITY OF CASCADE LOCKS

BOUNDARY LINE ADJUSTMENT APPROVAL
APPROVED FOR FILING THIS 21st DAY OF September, 2010.
Neil Bernard Seeger
CITY MANAGER OF CASCADE LOCKS

HOOD RIVER COUNTY SURVEYOR'S OFFICE
CS# 2010 047
DATE FILED: 10-13-10
BY: *RJ*



NARRATIVE:
THE PURPOSE OF THIS SURVEY IS TO ADJUST THE BOUNDARY LINE BETWEEN TAX LOTS 1300 AND 1400. EXISTING TAX LOT ACREAGE AND ADJUSTED TAX LOT ACREAGE IS SHOWN ON ACREAGE TABLE ON THE FACE OF THE PLAT. MONUMENTATION WAS FOUND IN THE FIELD AND NOTED ON THE PLAT.

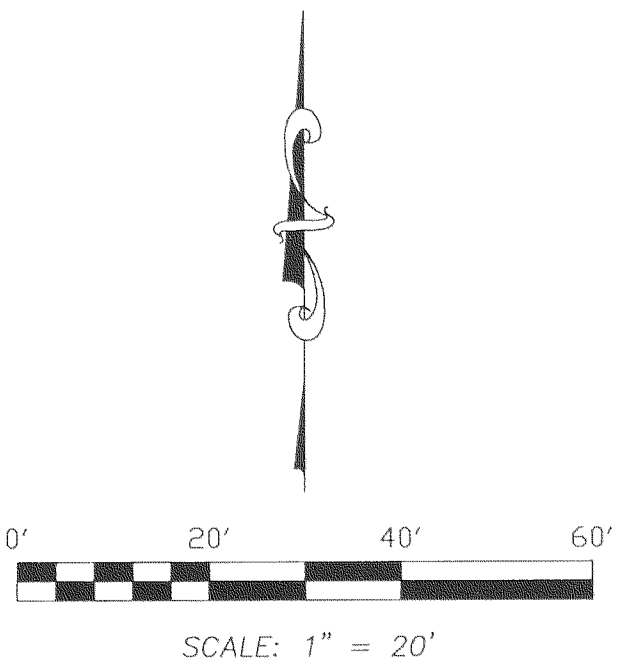
LOCATION OF SURVEY:
LOCATED IN THE S.W. 1/4 OF SECTION 12, TOWNSHIP 2 NORTH, RANGE 7 EAST OF WILLAMETTE MERIDIAN, CITY OF CASCADE LOCKS, HOOD RIVER COUNTY, OREGON.

BASIS OF BEARING:
HOOD RIVER COUNTY SURVEY No. 83021

REFERENCES:
HOOD RIVER COUNTY SURVEY No. 83021
HOOD RIVER COUNTY SURVEY No. 2008065

- LEGEND:**
- SET 5/8" X 30" IRON ROD WITH PLASTIC CAP
 - ⊙ SET A BRASS WASHER MARKED L.S. 72306
 - FOUND MONUMENT OF RECORD
 - CALCULATED, NOT FOUND OR SET
 - △ RAILROAD SPIKE FOUND IN ASPHALT
 - I.D. INSIDE DIAMETER
 - () DEED OR PLAT CALL
 - ⊖ POWER POLE
 - ⊙ SANITARY SEWER MANHOLE
 - ⊞ TRANSFORMER
 - ⊕ ELECTRIC PEDESTAL
 - ⊞ TELEPHONE PEDESTAL
 - ⊞ TV PEDESTAL

FOUND 1 1/2" PIPE 2' OUT OF GROUND, BENT OVER. HRC SURVEY #83021 CALLS FOR A 5/8" IRON ROD, IRON ROD POSSIBLY INSIDE PIPE. UNABLE TO REMOVE PIPE.



- LINE LEGEND:**
- s— SANITARY SEWER LINE
 - e— UNDERGROUND POWER
 - s— STORM SEWER LINE
 - t— UNDERGROUND TV LINE

AREA TABLE:

ACREAGE TABLE	EXISTING AREA	ADJUSTED AREA
TAX LOT 1300	22,315 SQ. FT. ±	13,005 SQ. FT. ±
TAX LOT 1400	3,070 SQ. FT. ±	12,380 SQ. FT. ±

REGISTERED PROFESSIONAL LAND SURVEYOR
Erik M. Carlson
OREGON
December 30, 2005
ERIK M. CARLSON
72306
Expires: December, 2011

TERRA SURVEYING

DATE MONUMENTED: SEPTEMBER 1, 2010
SCALE: 1" = 20'
PROJECT: 10060BLA
ASSESSORS MAP: 2N-7E-12CD
P.O. BOX 617
HOOD RIVER, OREGON 97031
PHONE & FAX: (541) 386-4531
terra@gorge.net
www.terrandsurveying.com