

TERRA SURVEYING

BOUNDARY LINE ADJUSTMENT SURVEY
for
THE PORT OF HOOD RIVER
T3N R10E SEC. 25 TAX LOT 109

LEGEND:

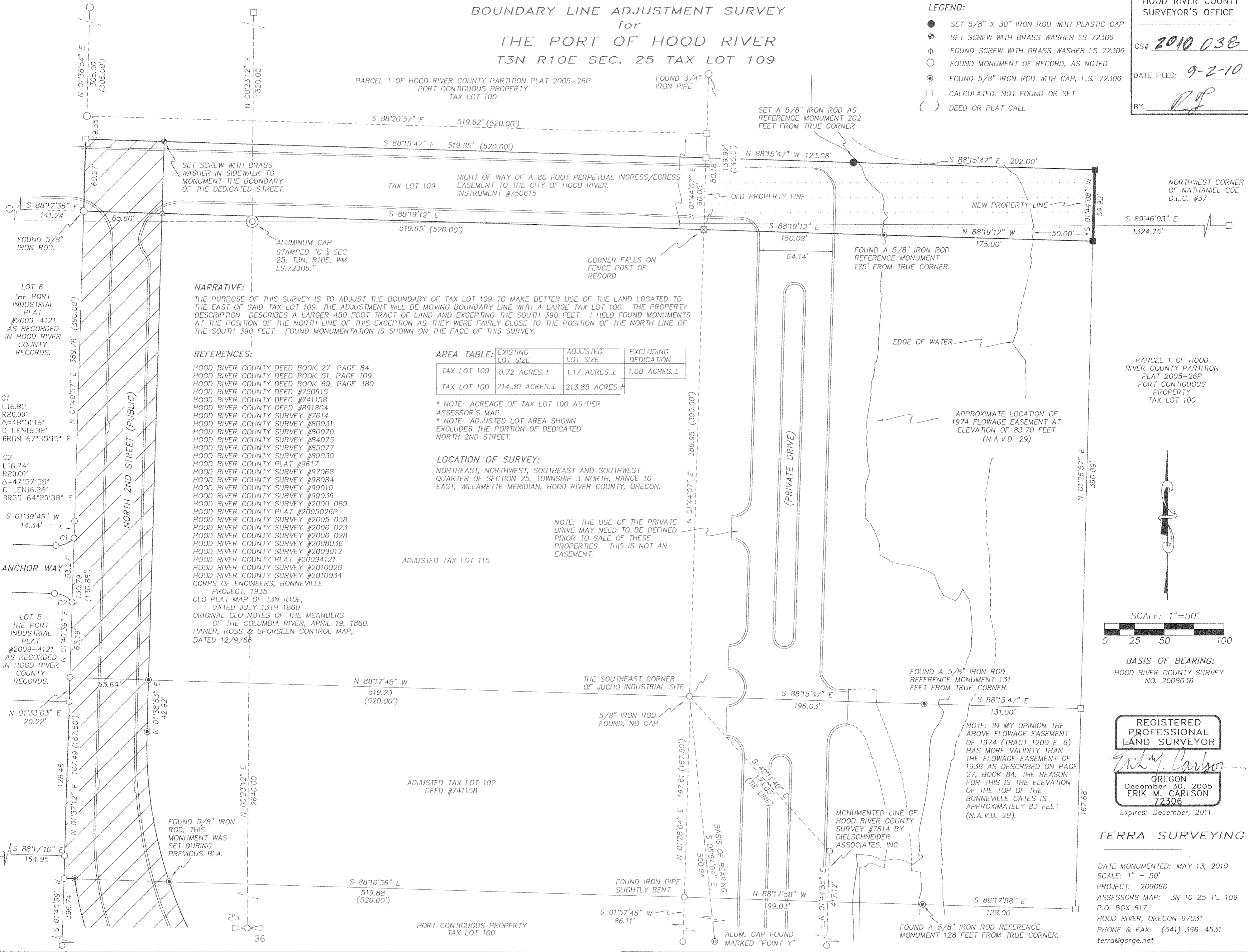
- SET 5/8" X 30" IRON ROD WITH PLASTIC CAP
- ⊕ SET SCREW WITH BRASS WASHER LS 72306
- ⊕ FOUND SCREW WITH BRASS WASHER LS 72306
- FOUND MONUMENT OF RECORD, AS NOTED
- FOUND 5/8" IRON ROD WITH CAP, L.S. 72306
- CALCULATED, NOT FOUND OR SET
- () DEED OR PLAT CALL

HOOD RIVER COUNTY
SURVEYOR'S OFFICE

CS# 2010 038

DATE FILED: 9-2-10

BY: *[Signature]*



NARRATIVE:

THE PURPOSE OF THIS SURVEY IS TO ADJUST THE BOUNDARY OF TAX LOT 109 TO MAKE BETTER USE OF THE LAND LOCATED TO THE EAST OF SAID TAX LOT 109. THE ADJUSTMENT WILL BE MOVING BOUNDARY LINE WITH A LARGE TAX LOT 100. THE PROPERTY DESCRIPTION DESCRIBES A LARGER 450 FOOT TRACT OF LAND AND EXCEPTING THE SOUTH 390 FEET. I HAD FOUND MONUMENTS AT THE POSITION OF THE NORTH LINE OF THIS EXCEPTION AS THEY WERE FAIRLY CLOSE TO THE POSITION OF THE NORTH LINE OF THE SOUTH 390 FEET. FOUND MONUMENTATION IS SHOWN ON THE FACE OF THIS SURVEY.

REFERENCES:

- HOOD RIVER COUNTY DEED BOOK 27, PAGE 84
- HOOD RIVER COUNTY DEED BOOK 51, PAGE 109
- HOOD RIVER COUNTY DEED BOOK 69, PAGE 380
- HOOD RIVER COUNTY DEED #750615
- HOOD RIVER COUNTY DEED #741158
- HOOD RIVER COUNTY DEED #891804
- HOOD RIVER COUNTY SURVEY #7614
- HOOD RIVER COUNTY SURVEY #80031
- HOOD RIVER COUNTY SURVEY #80070
- HOOD RIVER COUNTY SURVEY #84075
- HOOD RIVER COUNTY SURVEY #85077
- HOOD RIVER COUNTY SURVEY #89030
- HOOD RIVER COUNTY PLAT #9617
- HOOD RIVER COUNTY SURVEY #97068
- HOOD RIVER COUNTY SURVEY #98084
- HOOD RIVER COUNTY SURVEY #99010
- HOOD RIVER COUNTY SURVEY #99036
- HOOD RIVER COUNTY SURVEY #2000 089
- HOOD RIVER COUNTY PLAT #2005026P
- HOOD RIVER COUNTY SURVEY #2005 058
- HOOD RIVER COUNTY SURVEY #2006 023
- HOOD RIVER COUNTY SURVEY #2006 028
- HOOD RIVER COUNTY SURVEY #2008036
- HOOD RIVER COUNTY SURVEY #2009012
- HOOD RIVER COUNTY PLAT #20094121
- HOOD RIVER COUNTY SURVEY #2010028
- HOOD RIVER COUNTY SURVEY #2010034
- CORPS OF ENGINEERS, BONNEVILLE PROJECT, 1935
- GLO PLAT MAP OF T3N R10E, DATED JULY 13TH 1860
- ORIGINAL GLO NOTES OF THE MEANDERS OF THE COLUMBIA RIVER, APRIL 19, 1860.
- HANER, ROSS & SPORSEEN CONTROL MAP, DATED 12/9/66

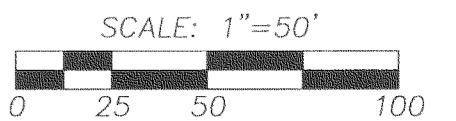
TAX LOT	EXISTING LOT SIZE	ADJUSTED LOT SIZE	EXCLUDING DEDICATION
TAX LOT 109	0.72 ACRES.±	1.17 ACRES.±	1.08 ACRES.±
TAX LOT 100	214.30 ACRES.±	213.85 ACRES.±	

* NOTE: ACREAGE OF TAX LOT 100 AS PER ASSESSOR'S MAP.
* NOTE: ADJUSTED LOT AREA SHOWN EXCLUDES THE PORTION OF DEDICATED NORTH 2ND STREET.

LOCATION OF SURVEY:

NORTHEAST, NORTHWEST, SOUTHEAST AND SOUTHWEST QUARTER OF SECTION 25, TOWNSHIP 3 NORTH, RANGE 10 EAST, WILLAMETTE MERIDIAN, HOOD RIVER COUNTY, OREGON.

NOTE: THE USE OF THE PRIVATE DRIVE MAY NEED TO BE DEFINED PRIOR TO SALE OF THESE PROPERTIES. THIS IS NOT AN EASEMENT.



BASIS OF BEARING:
HOOD RIVER COUNTY SURVEY NO. 2008036

REGISTERED PROFESSIONAL LAND SURVEYOR

[Signature]
ERIK M. CARLSON
December 30, 2005
72306
Expires: December, 2011

TERRA SURVEYING

DATE MONUMENTED: MAY 13, 2010
SCALE: 1" = 50'
PROJECT: 209066
ASSESSORS MAP: 3N 10 25 TL. 109
P.O. BOX 617
HOOD RIVER, OREGON 97031
PHONE & FAX: (541) 386-4531
terra@gorge.net

CS 2010 038

RECEIVED AUG 26 2010