

TERRA SURVEYING  
 BOUNDARY LINE ADJUSTMENT SURVEY  
 for  
 THE PORT OF HOOD RIVER  
 T3N R10E SEC. 25 TAX LOT 115

LEGEND:

- SET 5/8" X 30" IRON ROD WITH PLASTIC CAP
- ⊗ SET SCREW/WASHER IN CONCRETE L.S. 72306
- FOUND MONUMENT OF RECORD
- ⊙ FOUND 5/8" X 30" IRON ROD PLASTIC CAP MARKED L.S. 72306
- ⊕ FOUND 5/8" X 30" IRON ROD ALUM. CAP MARKED L.S. 72306
- CALCULATED, NOT FOUND OR SET
- ( ) DEED OR PLAT CALL

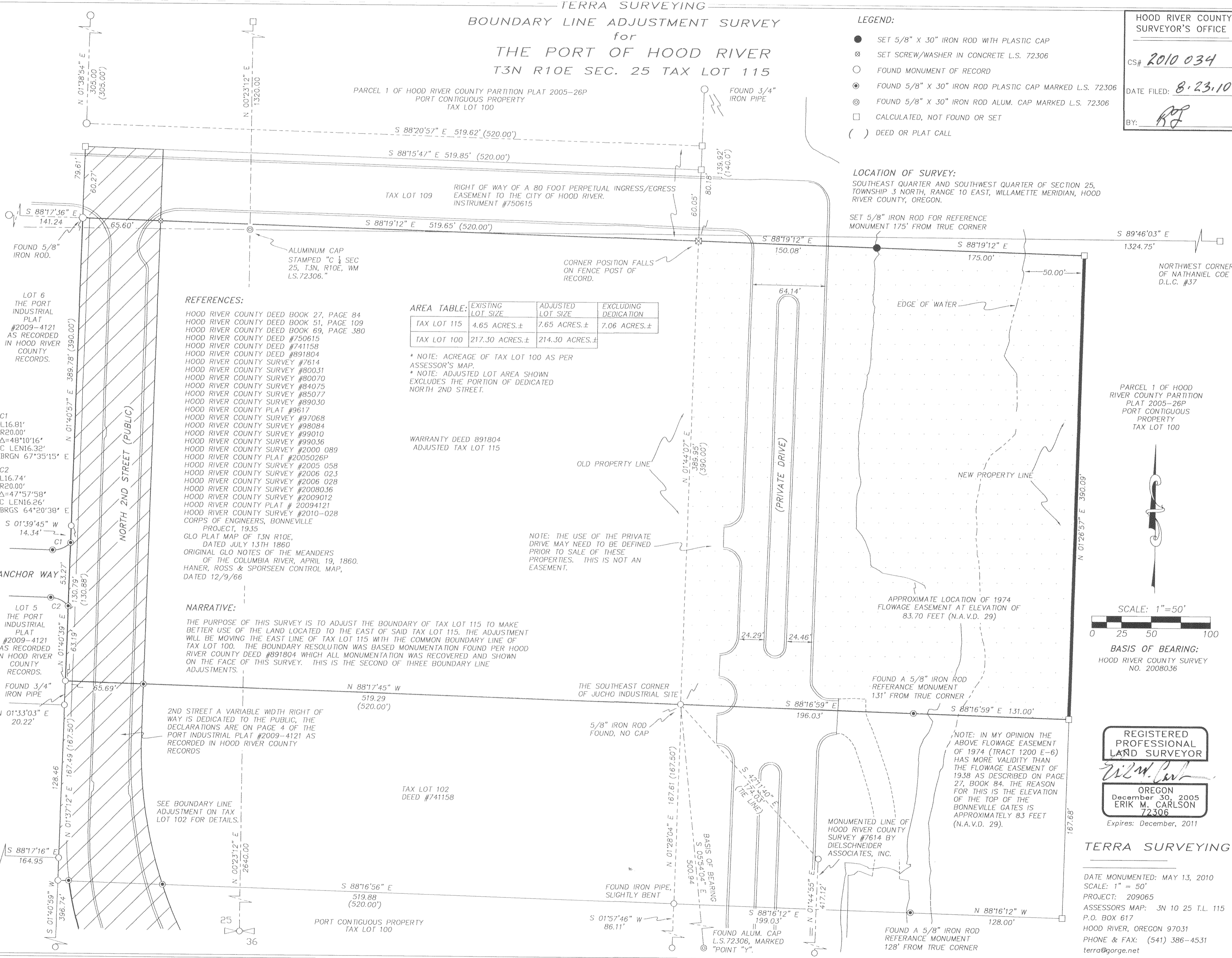
HOOD RIVER COUNTY  
 SURVEYOR'S OFFICE  
 CS# 2010 034  
 DATE FILED: 8-23-10  
 BY: *RF*

PARCEL 1 OF HOOD RIVER COUNTY PARTITION PLAT 2005-26P  
 PORT CONTIGUOUS PROPERTY  
 TAX LOT 100

LOCATION OF SURVEY:

SOUTHEAST QUARTER AND SOUTHWEST QUARTER OF SECTION 25,  
 TOWNSHIP 3 NORTH, RANGE 10 EAST, WILLAMETTE MERIDIAN, HOOD  
 RIVER COUNTY, OREGON.

SET 5/8" IRON ROD FOR REFERENCE  
 MONUMENT 175' FROM TRUE CORNER



REFERENCES:

- HOOD RIVER COUNTY DEED BOOK 27, PAGE 84
- HOOD RIVER COUNTY DEED BOOK 51, PAGE 109
- HOOD RIVER COUNTY DEED BOOK 69, PAGE 380
- HOOD RIVER COUNTY DEED #750615
- HOOD RIVER COUNTY DEED #741158
- HOOD RIVER COUNTY DEED #891804
- HOOD RIVER COUNTY SURVEY #7614
- HOOD RIVER COUNTY SURVEY #80031
- HOOD RIVER COUNTY SURVEY #80070
- HOOD RIVER COUNTY SURVEY #84075
- HOOD RIVER COUNTY SURVEY #85077
- HOOD RIVER COUNTY SURVEY #89030
- HOOD RIVER COUNTY PLAT #9617
- HOOD RIVER COUNTY SURVEY #97068
- HOOD RIVER COUNTY SURVEY #98084
- HOOD RIVER COUNTY SURVEY #99010
- HOOD RIVER COUNTY SURVEY #99036
- HOOD RIVER COUNTY SURVEY #2000 089
- HOOD RIVER COUNTY PLAT #2005026P
- HOOD RIVER COUNTY SURVEY #2005 058
- HOOD RIVER COUNTY SURVEY #2006 023
- HOOD RIVER COUNTY SURVEY #2006 028
- HOOD RIVER COUNTY SURVEY #2008036
- HOOD RIVER COUNTY SURVEY #2009012
- HOOD RIVER COUNTY PLAT # 20094121
- HOOD RIVER COUNTY SURVEY #2010-028
- CORPS OF ENGINEERS, BONNEVILLE PROJECT, 1935
- GLO PLAT MAP OF T3N R10E, DATED JULY 13TH 1860
- ORIGINAL GLO NOTES OF THE MEANDERS OF THE COLUMBIA RIVER, APRIL 19, 1860.
- HANER, ROSS & SPORSEEN CONTROL MAP, DATED 12/9/66

TAX LOT	EXISTING LOT SIZE	ADJUSTED LOT SIZE	EXCLUDING DEDICATION
TAX LOT 115	4.65 ACRES.±	7.65 ACRES.±	7.06 ACRES.±
TAX LOT 100	217.30 ACRES.±	214.30 ACRES.±	

\* NOTE: ACREAGE OF TAX LOT 100 AS PER ASSESSOR'S MAP.  
 \* NOTE: ADJUSTED LOT AREA SHOWN EXCLUDES THE PORTION OF DEDICATED NORTH 2ND STREET.

WARRANTY DEED 891804  
 ADJUSTED TAX LOT 115

NOTE: THE USE OF THE PRIVATE DRIVE MAY NEED TO BE DEFINED PRIOR TO SALE OF THESE PROPERTIES. THIS IS NOT AN EASEMENT.

NARRATIVE:

THE PURPOSE OF THIS SURVEY IS TO ADJUST THE BOUNDARY OF TAX LOT 115 TO MAKE BETTER USE OF THE LAND LOCATED TO THE EAST OF SAID TAX LOT 115. THE ADJUSTMENT WILL BE MOVING THE EAST LINE OF TAX LOT 115 WITH THE COMMON BOUNDARY LINE OF TAX LOT 100. THE BOUNDARY RESOLUTION WAS BASED MONUMENTATION FOUND PER HOOD RIVER COUNTY DEED #891804 WHICH ALL MONUMENTATION WAS RECOVERED AND SHOWN ON THE FACE OF THIS SURVEY. THIS IS THE SECOND OF THREE BOUNDARY LINE ADJUSTMENTS.

2ND STREET A VARIABLE WIDTH RIGHT OF WAY IS DEDICATED TO THE PUBLIC, THE DECLARATIONS ARE ON PAGE 4 OF THE PORT INDUSTRIAL PLAT #2009-4121 AS RECORDED IN HOOD RIVER COUNTY RECORDS

SEE BOUNDARY LINE ADJUSTMENT ON TAX LOT 102 FOR DETAILS.

NOTE: IN MY OPINION THE ABOVE FLOWAGE EASEMENT OF 1974 (TRACT 1200 E-6) HAS MORE VALIDITY THAN THE FLOWAGE EASEMENT OF 1938 AS DESCRIBED ON PAGE 27, BOOK 84. THE REASON FOR THIS IS THE ELEVATION OF THE TOP OF THE BONNEVILLE GATES IS APPROXIMATELY 83 FEET (N.A.V.D. 29).



SCALE: 1"=50'  
 BASIS OF BEARING:  
 HOOD RIVER COUNTY SURVEY NO. 2008036

REGISTERED PROFESSIONAL LAND SURVEYOR  
*Erik M. Carlson*  
 OREGON  
 December 30, 2005  
 ERIK M. CARLSON  
 72306  
 Expires: December, 2011

TERRA SURVEYING

DATE MONUMENTED: MAY 13, 2010  
 SCALE: 1" = 50'  
 PROJECT: 209065  
 ASSESSORS MAP: 3N 10 25 T.L. 115  
 P.O. BOX 617  
 HOOD RIVER, OREGON 97031  
 PHONE & FAX: (541) 386-4531  
 terra@gorge.net

CS 2010 034