

DEED REFERENCE:

WARRANTY DEED
 GRANTOR: FREDERICK C. BRADLEY AND NANCY D. BRADLEY,
 CO-TRUSTEES OF THE BRADLEY REVOCABLE LIVING TRUST
 GRANTEE: ERIC OLANIE AND M. TERESA VOLPONE, HUSBAND AND WIFE
 HOOD RIVER COUNTY TAX ACCOUNT NUMBER # 2N-11E-17-700
 HOOD COUNTY FEE NUMBER #2009-03571

SURVEY

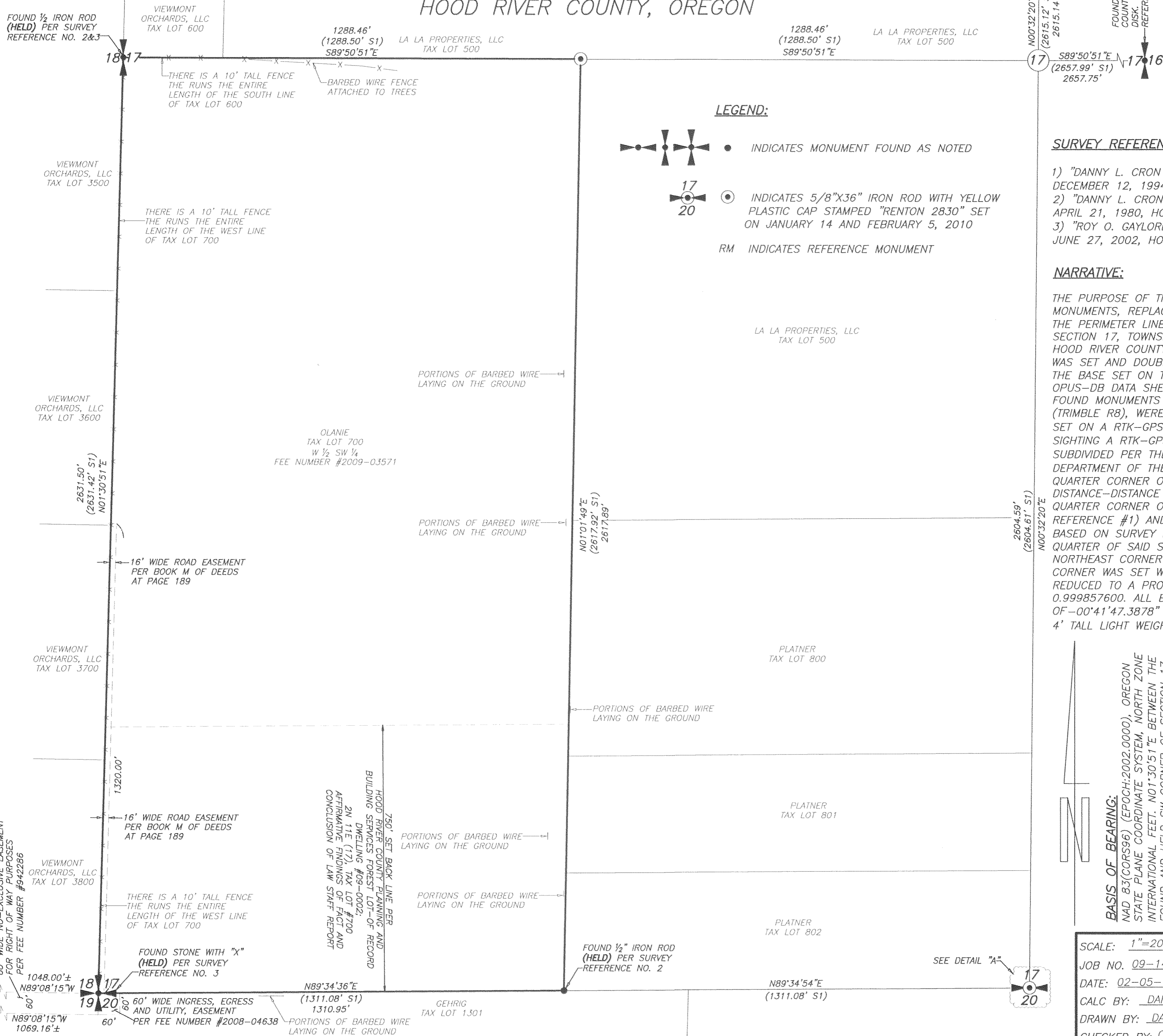
OF THE WEST HALF
 OF THE SOUTHWEST QUARTER
 OF SECTION 17, TOWNSHIP 2 NORTH,
 RANGE 11 EAST, WILLAMETTE MERIDIAN
 HOOD RIVER COUNTY, OREGON

HOOD RIVER COUNTY SURVEYOR

SURVEY NO. **C9 2010 005**

FILED **2-11-10**

BY **AG**



LEGEND:

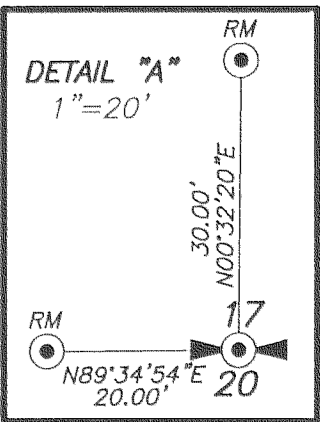
- INDICATES MONUMENT FOUND AS NOTED
- INDICATES 5/8"X36" IRON ROD WITH YELLOW PLASTIC CAP STAMPED "RENTON 2830" SET ON JANUARY 14 AND FEBRUARY 5, 2010
- RM INDICATES REFERENCE MONUMENT

SURVEY REFERENCE:

- 1) "DANNY L. CRON (LS 1028)" SURVEY, FILED DECEMBER 12, 1994, HOOD RIVER COUNTY SURVEY #91126
- 2) "DANNY L. CRON (LS 1028)" SURVEY, FILED APRIL 21, 1980, HOOD RIVER COUNTY SURVEY #80033
- 3) "ROY O. GAYLORD (LS 1815)" SURVEY, FILED JUNE 27, 2002, HOOD RIVER COUNTY SURVEY #2002 041

NARRATIVE:

THE PURPOSE OF THIS SURVEY WAS TO RECOVER THE PERIMETER MONUMENTS, REPLACE ANY MISSING PERIMETER MONUMENTS AND MARK/POST THE PERIMETER LINES OF THE WEST HALF OF THE SOUTHWEST QUARTER OF SECTION 17, TOWNSHIP 2 NORTH, RANGE 11 EAST, WILLAMETTE MERIDIAN, HOOD RIVER COUNTY, OREGON. ALL CONTROLLING CORNERS AND CONTROL WAS SET AND DOUBLED TIED USING RTK-GPS (TRIMBLE R8) METHODS WITH THE BASE SET ON TWO NGS-OPUS DERIVED CONTROL POINTS. SEE NGS OPUS-DB DATA SHEET PID BBBQ71 AND BBBQ72 FOR DETAIL DESCRIPTION. FOUND MONUMENTS THAT WERE UNABLE TO BE TIED WITH THE RTK-GPS (TRIMBLE R8), WERE TIED USING A TRIMBLE S6 TOTAL STATION THAT WAS SET ON A RTK-GPS (TRIMBLE R8) DERIVED CONTROL POINT AND BACK SIGHTING A RTK-GPS (TRIMBLE R8) CONTROL POINT. THE SECTION WAS SUBDIVIDED PER THE "MANUAL OF SURVEYING INSTRUCTIONS 1973, U.S. DEPARTMENT OF THE INTERIOR, BUREAU OF LAND MANAGEMENT". THE SOUTH QUARTER CORNER OF SAID SECTION WAS COMPUTED BY HOLDING A DISTANCE-DISTANCE INTERSECTION FROM THE FOUND AND HELD NORTH QUARTER CORNER OF SAID SECTION (DISTANCE BASED ON SURVEY REFERENCE #1) AND THE FOUND AND HELD SOUTHEAST CORNER (DISTANCE BASED ON SURVEY REFERENCE #1) OF THE WEST HALF OF THE SOUTHWEST QUARTER OF SAID SECTIONS. THE ONLY CORNER THAT WAS SET WAS THE NORTHEAST CORNER OF THE WEST HALF OF SAID SOUTHWEST QUARTER. SAID CORNER WAS SET WITH RTK-GPS (TRIMBLE R8). ALL DISTANCES WERE REDUCED TO A PROJECT DATUM USING A COMBINED SCALE FACTOR OF 0.999857600. ALL BEARINGS ARE GRID WITH A CONVERGENCE ANGLE OF -00°41'47.3878" THE NORTH, EAST AND SOUTH LINES WERE MARKED WITH 4' TALL LIGHT WEIGHT FENCE POST.

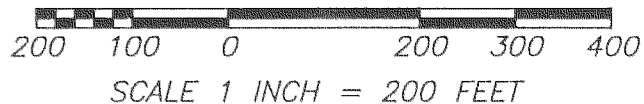


BASIS OF BEARING:
 NAD 83(CORS96) (EPOCH:2002.0000), OREGON
 STATE PLANE COORDINATE SYSTEM, NORTH ZONE
 INTERNATIONAL FEET. N01°30'51"E BETWEEN THE
 FOUND AND HELD SW CORNER OF SECTION 17
 AND THE FOUND AND HELD WEST QUARTER
 CORNER OF SECTION 17
 CONVERGENCE ANGLE BETWEEN SAID FOUND AND
 HELD MONUMENTS: -00°41'47.3878"
 COMBINED SCALE FACTOR: 0.999857600

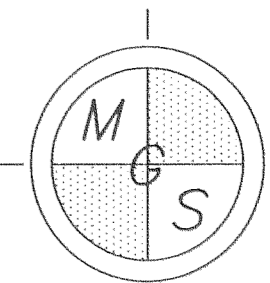
02/05/2010
 REGISTERED
 PROFESSIONAL
 LAND SURVEYOR

Daniel A. Renton
 OREGON
 JUNE 30, 1997
 DANIEL A. RENTON
 2830

Expires 12-31-2010



SCALE: 1"=200'
 JOB NO. 09-140
 DATE: 02-05-10
 CALC BY: DAR
 DRAWN BY: DAR
 CHECKED BY: CAG
 SHEET 1 OF 1



MINISTER-GLAESER
 SURVEYING INC.
 2200 E. EVERGREEN BLVD.
 VANCOUVER, WA 98661
 (360) 694-3313

DWG FILE: 09140S.DWG

RECEIVED FEB - 8 2010

CS 2010 005