

NARRATIVE

THE PURPOSE OF THIS SURVEY IS TO ESTABLISH THE CORNER COMMON TO MULTNOMAH AND CLACKAMAS COUNTIES, BEING ON THE WESTERN BOUNDARY OF HOOD RIVER COUNTY.

PER ORS 201.140, THE WESTERN BOUNDARY OF HOOD RIVER COUNTY IS THE "SUMMIT OF THE CASCADE RANGE".
 PER ORS 201.260, THE SOUTH BOUNDARY OF MULTNOMAH COUNTY IS DESCRIBED AS FOLLOWS: "...DOWN THE MIDDLE OF THE WILLAMETTE RIVER TO THE SECTION LINE BETWEEN SECTIONS 23 AND 26, TOWNSHIP 1 SOUTH, RANGE 1 EAST; THENCE EAST ON SECTION LINES TO THE WESTERN BOUNDARY OF HOOD RIVER COUNTY, AS DESCRIBED IN ORS 201.140..."
 THE "SUMMIT OF THE CASCADE RANGE" INTERSECTS THE WEST HALF OF THE SOUTH LINE OF SECTION 22, IN TOWNSHIP 1 SOUTH, RANGE 8 EAST, WILLAMETTE MERIDIAN AND SAID INTERSECTION IS THE POSITION FOR THE SUBJECT CORNER.

THE SOUTH LINE OF SECTION 22 WAS DETERMINED BY HOLDING ORIGINAL 1940 GLO MONUMENTS FOUND AT THE SOUTHWEST CORNER AND SOUTH ONE-QUARTER CORNER OF SAID SECTION 22. A CLOSED TRAVERSE WAS PERFORMED TIEING SAID CORNERS.

TO DETERMINE THE SUMMIT OF THE CASCADE RANGE, A RANDOM POINT WAS SET ON THE SOUTH LINE OF SAID SECTION 22 NEAR THE HIGH POINT OF THE RIDGE AND GROUND ELEVATIONS WERE TAKEN ALONG THE SECTION LINE TO DETERMINE THE HIGHEST POINT OF SAID RIDGE, AT WHICH POINT THE SUBJECT CORNER WAS ESTABLISHED.

BASIS OF BEARINGS: TRUE GEODETIC BEARINGS BASED ON G.P.S. OBSERVATIONS TAKEN SEPTEMBER 25, 2009.

COORDINATES (OREGON STATE PLANE - NORTH ZONE - NAD83/91) SHOWN ARE BASED ON STATION "HIYU" PER SURVEY NUMBER 55683, MCSR.

	NORTHING	EASTING
(A)	657,207.030	7,862,610.304
(B)	657,201.480	7,862,938.088
(C)	657,189.338	7,863,475.184
(D)	657,151.570	7,865,321.578

RECORD OF SURVEY

ESTABLISHING THE CORNER COMMON TO MULTNOMAH AND CLACKAMAS COUNTIES, ON THE WESTERN BOUNDARY OF HOOD RIVER COUNTY, LOCATED IN THE S.W. 1/4 OF SECTION 22, THE S.E. 1/4 OF SECTION 21, AND THE N.W. 1/4 OF SECTION 27, TOWNSHIP 1 SOUTH, RANGE 8 EAST, W.M. MULTNOMAH, CLACKAMAS, AND HOOD RIVER COUNTIES, STATE OF OREGON

HOOD RIVER COUNTY SURVEYOR'S OFFICE

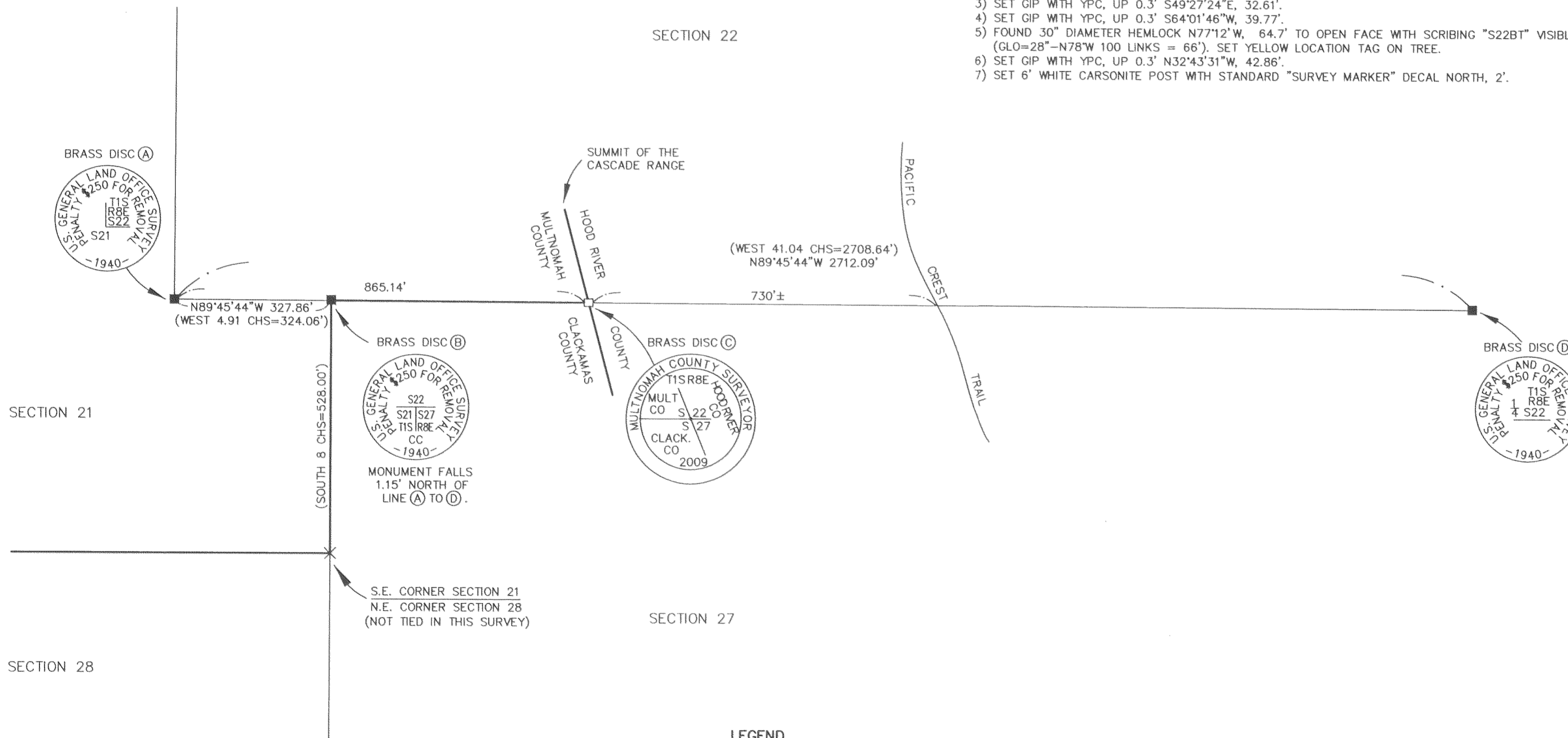
SURVEY NO. CS 2009 054

FILED: 11/12/09

BY: Ray J. [Signature]

MONUMENTS

- SOUTHWEST CORNER OF SECTION 22:**
 (A) FOUND: 2" OUTSIDE DIAMETER IRON PIPE WITH 2-1/2" BRASS DISC, MARKED AS SHOWN HEREON (G.L.O. - 1940), RIVETED TO TOP OF PIPE, UP 0.6'. FOR REFERENCES SEE B.T. G-679, MCSR.
- CLOSING CORNER COMMON TO SECTIONS 21 AND 27:**
 (B) FOUND: 2" OUTSIDE DIAMETER IRON PIPE WITH 2-1/2" BRASS DISC, MARKED AS SHOWN HEREON (G.L.O. - 1940), RIVETED TO TOP OF PIPE, UP 0.7'. FOR REFERENCES SEE B.T. G-677, MCSR.
- CORNER COMMON TO MULTNOMAH AND CLACKAMAS COUNTIES, ON THE WESTERN BOUNDARY OF HOOD RIVER COUNTY:**
 (C) SET: 2" INSIDE DIAMETER X 36" LONG GALVANIZED IRON PIPE WITH 4-1/4" BRASS DISC, MARKED AS SHOWN HEREON, CEMENTED IN THE TOP. BUILT 3' DIAMETER COLLAR OF ROCK AROUND PIPE. BRASS DISC IS FLUSH WITH ROCK COLLAR.
 FROM WHICH:
 1) SET GIP WITH YPC, UP 0.2' N26°22'08"E, 33.31'.
 2) SET GIP WITH YPC, UP 0.2' S53°58'38"E, 36.05'.
 3) SET GIP WITH YPC, UP 0.3' S29°47'10"W, 21.78'.
 4) SET GIP WITH YPC, UP 0.3' N47°55'28"W, 25.63'.
 5) SET 6' WHITE CARSONITE POST WITH STANDARD "SURVEY MARKER" DECAL NORTH, 2'.
- SOUTH 1/4 CORNER OF SECTION 22:**
 (D) FOUND 1" OUTSIDE DIAMETER IRON PIPE WITH 2-1/2" BRASS DISC, MARKED AS SHOWN HEREON (G.L.O. - 1940), RIVETED TO THE TOP OF PIPE, UP 0.7'. BUILT A 2' DIAMETER COLLAR OF ROCK AROUND PIPE. BRASS DISC IS NOW UP 0.2' ABOVE ROCK.
 FROM WHICH:
 1) FOUND 30" DIAMETER NOBLE FIR N16°41'E 25.8' TO CENTER (GLO=22"-N17°E 39 LINKS = 25.7') WITH GROWN OVER FACE. SET YELLOW LOCATION TAG ON TREE.
 2) SET GIP WITH YPC, UP 0.3' N42°41'04"E, 22.15'.
 3) SET GIP WITH YPC, UP 0.3' S49°27'24"E, 32.61'.
 4) SET GIP WITH YPC, UP 0.3' S64°01'46"W, 39.77'.
 5) FOUND 30" DIAMETER HEMLOCK N77°12'W, 64.7' TO OPEN FACE WITH SCRIBING "S22BT" VISIBLE (GLO=28"-N78°W 100 LINKS = 66'). SET YELLOW LOCATION TAG ON TREE.
 6) SET GIP WITH YPC, UP 0.3' N32°43'31"W, 42.86'.
 7) SET 6' WHITE CARSONITE POST WITH STANDARD "SURVEY MARKER" DECAL NORTH, 2'.



LEGEND

- FOUND G.L.O. MONUMENT AS DESCRIBED ABOVE.
- SET MULTNOMAH COUNTY MONUMENT AS DESCRIBED ABOVE.
- () RECORD DATA PER G.L.O. FIELD NOTES.
- GIP 3/4" X 30" GALVANIZED IRON PIPE.
- YPC YELLOW PLASTIC CAP MARKED "MULT. CO. SURVEY".
- B.T. BEARING TREE BOOK AND PAGE, MCSR.
- G.L.O. GENERAL LAND OFFICE.
- CHS CHAINS. LKS = LINKS.
- MCSR MULTNOMAH COUNTY SURVEY RECORDS.

CREW:
 HOVDEN, OKELL, JUHNKE, KAHSAY, BERGER

EQUIPMENT:
 LEICA TPS 805LC
 TDS RANGER

DRAWN DATE:
 10/12/2009

REGISTERED PROFESSIONAL LAND SURVEYOR

Robert A. Hovden

OREGON
 JULY 16, 1971
 ROBERT A. HOVDEN
 954

RENEWAL DATE: 6/30/2011

I CERTIFY THAT THIS SURVEY WAS PREPARED USING CANON PRODUCT PFI-102MBK ON CONTINENTAL JPC4M2 POLYESTER FILM.

		MULTNOMAH COUNTY DEPARTMENT OF COMMUNITY SERVICES COUNTY SURVEYOR'S OFFICE 1600 S.E. 190TH AVE. PORTLAND, ORE. 97233-5999	
ROBERT A. HOVDEN PLS		COUNTY SURVEYOR	
DRAFTED: SRO	CHECKED: RAH	SHT. 1	OF 1
DATE SET: 10/05/2009		SCALE: 1" = 200'	

RECEIVED OCT 30 2009

CS 2009 054