

HOOD RIVER COUNTY
SURVEYOR'S OFFICE

CS# **2009 053**

DATE FILED: **10/27/09**

BY: *Amy Peters*

PROPORTIONED POSITION WAS CALCULATED USING THE NORTHWEST CORNER AND SOUTHWEST CORNER OF SECTION 18 FOR THIS QUARTER CORNER.

SET 5/8" IRON ROD MONUMENTING THE CENTER OF SECTION 18.

FOUND DAMAGED 5/8" IRON ROD L.S. 1815, REPLACED MONUMENT. DAMAGED POSITION WAS WITHIN 1 FOOT OF CALCULATED POSITION.

FOUND COUNTY BRASS CAP OF RECORD AT THE NORTHEAST CORNER OF SECTION 18.

FOUND LS 1028 1/2" IRON ROD FOR THE SINGLE PROPORTIONED QUARTER CORNER. ACCEPTED IRON ROD.

LINE	BEARING	DISTANCE
L1	S 88°44'17" E	78.76'
L2	N 69°29'22" E	60.00'
L3	N 35°09'47" E	86.50'
L4	N 01°02'55" E	20.00'

SCALE: 1"=200 FEET



BASIS OF BEARING:
HOOD RIVER COUNTY PLAT #2008 064

REGISTERED
PROFESSIONAL
LAND SURVEYOR

Erik M. Carlson

OREGON
December 30, 2005
ERIK M. CARLSON
72306

Expires: December, 2009

REFERENCES:

- HOOD RIVER COUNTY SURVEY #0637
- HOOD RIVER COUNTY SURVEY #1472
- HOOD RIVER COUNTY SURVEY #94126
- HOOD RIVER COUNTY SURVEY #2002041
- HOOD RIVER COUNTY SURVEY #2008064
- HOOD RIVER COUNTY DEED #700754
- HOOD RIVER COUNTY DEED #700876
- HOOD RIVER COUNTY DEED #700892
- HOOD RIVER COUNTY DEED #700893
- HOOD RIVER COUNTY DEED #740538
- HOOD RIVER COUNTY DEED #740568
- HOOD RIVER COUNTY DEED #740569
- HOOD RIVER COUNTY DEED #741112
- HOOD RIVER COUNTY DEED #871189
- HOOD RIVER COUNTY DEED #953371

LEGEND:

- SET 5/8" X 30" IRON ROD WITH PLASTIC CAP
- ⊙ SET 5/8" X 30" IRON ROD WITH ALUMINUM CAP
- FOUND MONUMENT OF RECORD AS NOTED.
- CALCULATED, NOT FOUND OR SET
- () DEED OR PLAT CALL

TERRA SURVEYING

DATE MONUMENTED: OCTOBER 14, 2009
SCALE: 1" = 200'
PROJECT: 209006BBLA
ASSESSORS MAP: 2N 11E 18
P.O. BOX 617
HOOD RIVER, OREGON 97031
PHONE & FAX: (541) 386-4531
terra@gorge.net

SEE COUNTY SURVEY #2008-064 FOR DETAILS

NARRATIVE:

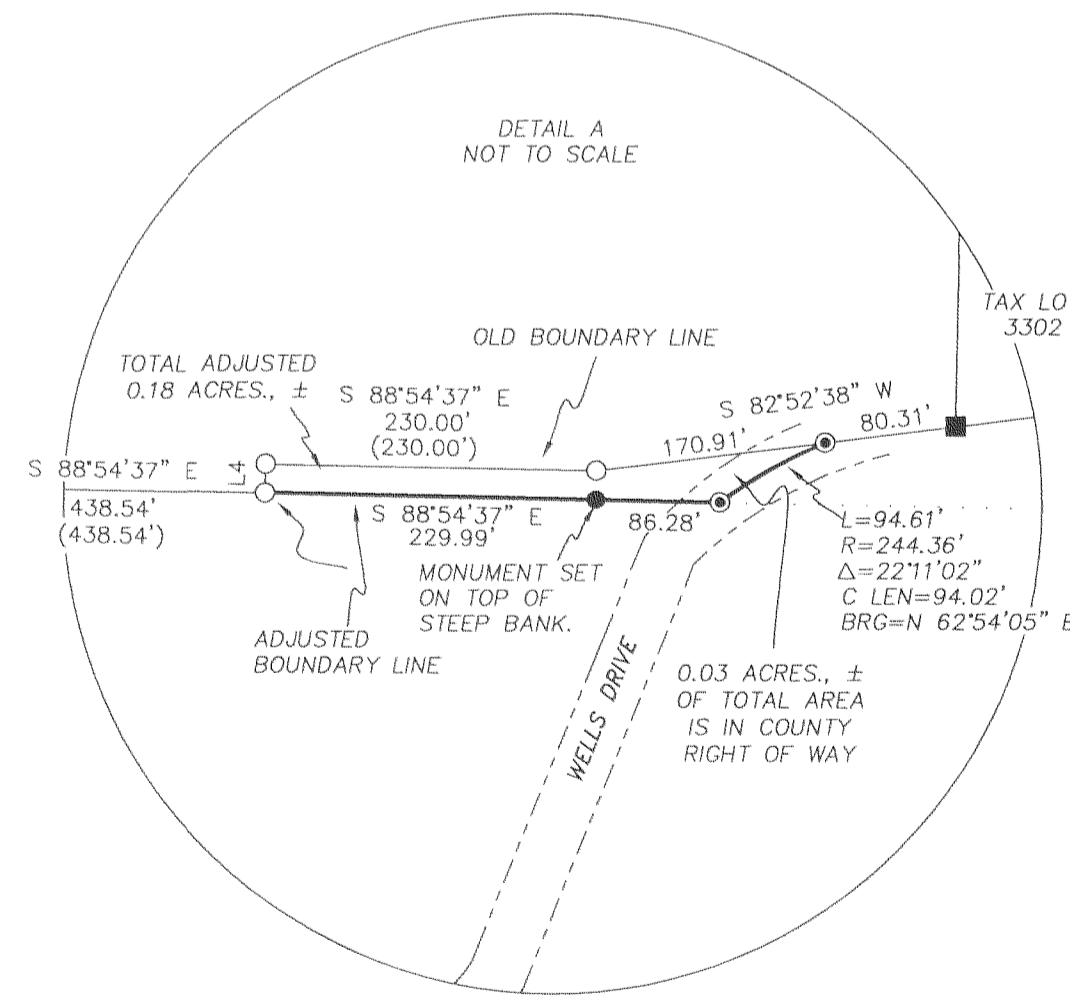
THE PURPOSE OF THIS SURVEY WAS ADJUST THE BOUNDARY BETWEEN TAX LOT 3300 & 3400. THE COMMON BOUNDARY IS DESCRIBED IN HOOD RIVER COUNTY QUITCLAIM DEEDS #700892 AND #700893 BETWEEN WELLS AND SWYERS. BOUNDARY DETAILS CAN BE FOUND ON BOUNDARY SURVEY #2008 064 AS FILED WITH THE COUNTY SURVEYOR.

SEE FACE OF THIS SURVEY FOR FURTHER DETAILS.

LOCATION OF SURVEY:

A PORTION OF SOUTHEAST QUARTER OF SECTION 18, TOWNSHIP 2 NORTH, RANGE 11 EAST, W.M., HOOD RIVER COUNTY, OREGON.

	EXISTING PARCEL SIZE	ADJUSTED PARCEL SIZE
TAX LOT 3300	8.32 ACRES., ±	8.50 ACRES., ±
TAX LOT 3200	20.58 ACRES., ±	20.40 ACRES., ±



BOUNDARY LINE ADJUSTMENT SURVEY
for
DELMAR SWYERS

RECEIVED OCT 15 2009

CS 2009 053