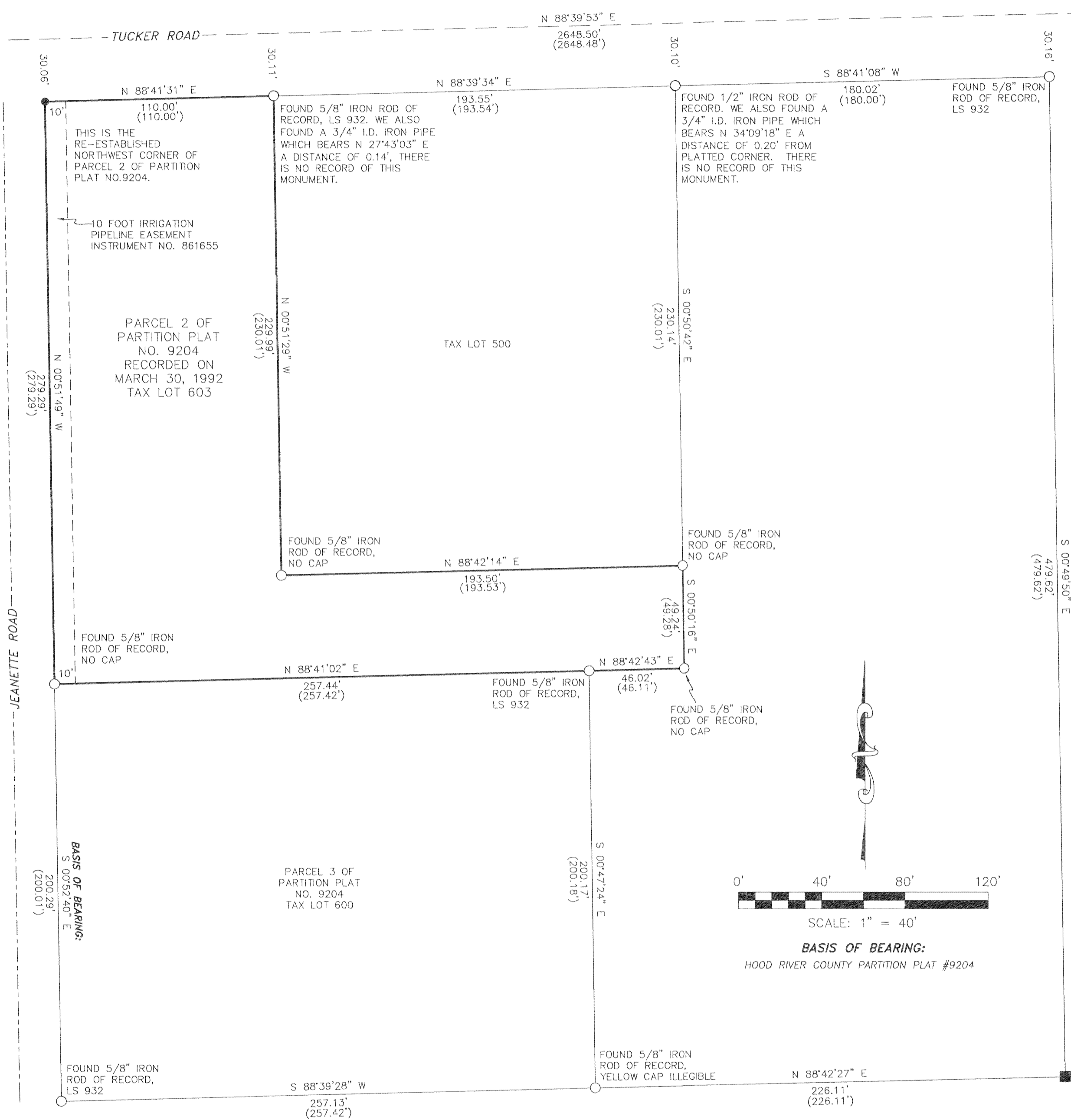


3" BRASS CAP OF RECORD FOUND IN MONUMENT BOX AT CORNER COMMON TO SECTIONS 2/3/10/11

3" BRASS CAP OF RECORD FOUND IN MONUMENT BOX MONUMENTING THE 1/4 CORNER

HOOD RIVER COUNTY SURVEYOR'S OFFICE
 CS# 2009 044
 DATE FILED: 8.31.09
 BY: *[Signature]*

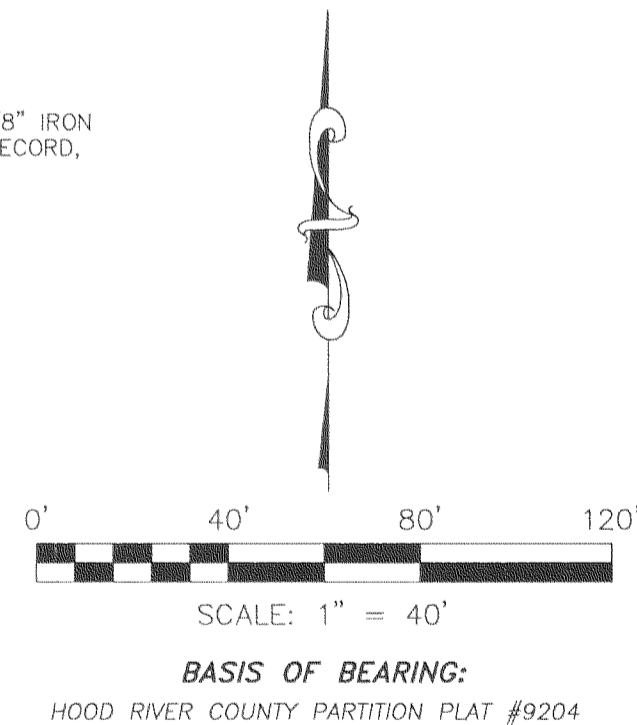


NARRATIVE:
 THE PURPOSE OF THIS SURVEY WAS TO RE-ESTABLISH THE NORTHWEST CORNER OF PARCEL 2 OF PARTITION PLAT NO. 9204. THE CORNER WAS LOST DURING RECENT CONSTRUCTION. MONUMENTATION IN THE VICINITY WAS FOUND AND LOCATED AS NOTED ON THE FACE OF THE PLAT. THE METHOD I USED TO RE-ESTABLISH THIS CORNER WAS TO USE A DISTANCE-DISTANCE INTERSECTION FROM EXISTING FOUND MONUMENTS. I BELIEVE THIS METHOD TO BE THE BEST WAY TO RE-SET THIS CORNER IN THE ORIGINAL POSITION. I FOUND 2 3/4" IRON PIPES MONUMENTING THE NORTHEAST AND NORTHWEST CORNERS OF TAX LOT 500, THESE WERE NOT EXCEPTED BY PREVIOUS SURVEYOR L.S. 932 AND MONUMENTS WERE SET WITHIN 0.2 FEET OF THESE MONUMENTS. I HELD THE PLATTED MONUMENTATION TO KEEP WITH THE RE-ESTABLISHMENT OF PARCEL 2.

LOCATION OF SURVEY:
 A PARCEL OF LAND LOCATED IN THE NORTHWEST QUARTER OF SECTION 11, TOWNSHIP 2 NORTH, RANGE 10 EAST, WILLAMETTE MERIDIAN, HOOD RIVER COUNTY, OREGON.

REFERENCES:
 HOOD RIVER COUNTY SURVEY NO. 88013
 HOOD RIVER COUNTY SURVEY NO. 89034
 HOOD RIVER COUNTY SURVEY NO. 92026 (PART. PLAT #9204)
 HOOD RIVER COUNTY SURVEY NO. 93026 (PART. PLAT #9308)
 HOOD RIVER COUNTY SURVEY NO. 2005056
 HOOD RIVER COUNTY DEED NO. 20023990

LEGEND:
 ● SET 5/8" X 30" IRON ROD WITH PLASTIC CAP
 ○ FOUND MONUMENT OF RECORD
 ■ CALCULATED, NOT FOUND OR SET
 () DEED OR PLAT CALL
 I.D. INSIDE DIAMETER



REGISTERED PROFESSIONAL LAND SURVEYOR
[Signature]
 OREGON
 December 30, 2005
 ERIK M. CARLSON
 72306
 Expires: December, 2009

TERRA SURVEYING
 DATE: JULY 30, 2009
 SCALE: 1" = 40'
 PROJECT: 209056
 ASSESSORS MAP: 2N 10E 11B
 P.O. BOX 617
 HOOD RIVER, OREGON 97031
 PHONE & FAX: (541) 386-4531
 E-Mail: terra@gorge.net

PROPERTY CORNER REPLACEMENT SURVEY
 for
 KATHERINE M. TALLMAN REVOCABLE LIVING TRUST