

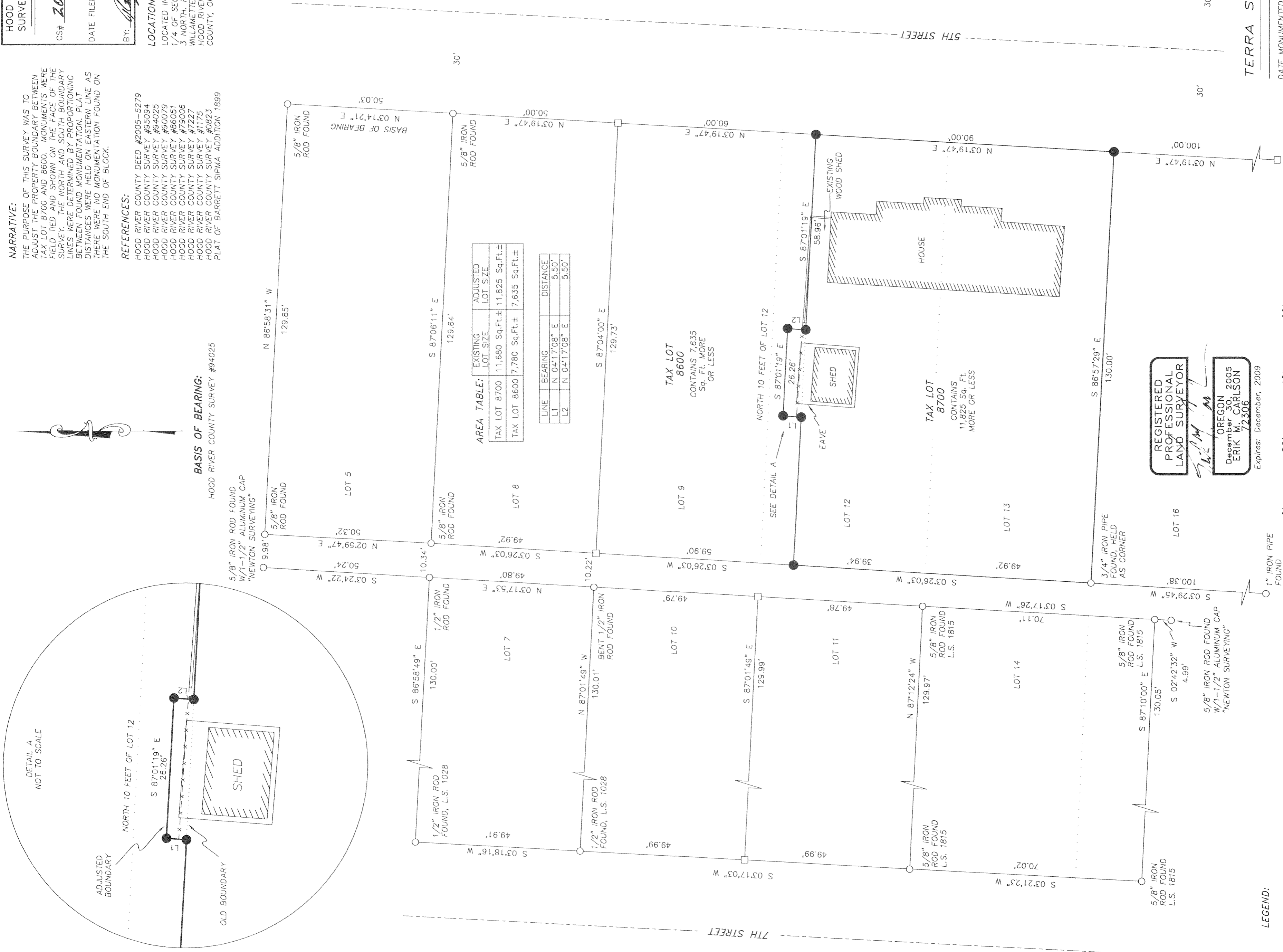
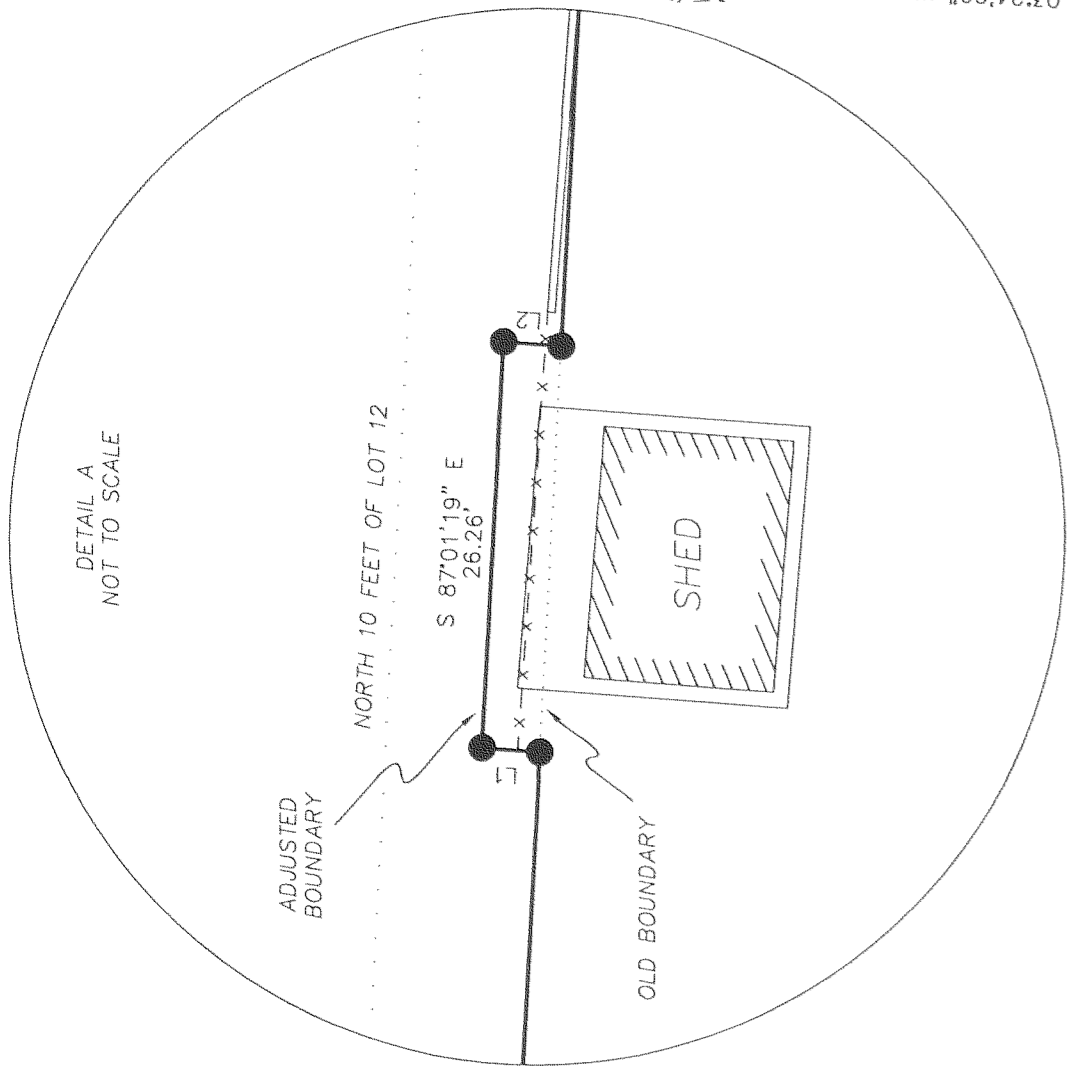
HOOD RIVER COUNTY SURVEYOR'S OFFICE
CS# 2009 043
DATE FILED: 8.31.09
BY: [Signature]

LOCATION OF SURVEY:
LOCATED IN THE NORTHWEST
1/4 OF SECTION 36, TOWNSHIP
3 NORTH, RANGE 10 EAST,
WILLAMETTE MERIDIAN, CITY OF
HOOD RIVER IN HOOD RIVER
COUNTY, OREGON.

NARRATIVE:
THE PURPOSE OF THIS SURVEY WAS TO
ADJUST THE PROPERTY BOUNDARY BETWEEN
TAX LOT 8700 AND 8600. MONUMENTS WERE
FIELD TIED AND SHOWN ON THE FACE OF THE
SURVEY. THE NORTH AND SOUTH BOUNDARY
LINES WERE DETERMINED BY PROPORTIONING
DISTANCES WERE HELD ON EASTERN LINE AS
THERE WERE NO MONUMENTATION FOUND ON
THE SOUTH END OF BLOCK.

REFERENCES:
HOOD RIVER COUNTY DEED #2005-5279
HOOD RIVER COUNTY SURVEY #95094
HOOD RIVER COUNTY SURVEY #94025
HOOD RIVER COUNTY SURVEY #90079
HOOD RIVER COUNTY SURVEY #86051
HOOD RIVER COUNTY SURVEY #79006
HOOD RIVER COUNTY SURVEY #7227
HOOD RIVER COUNTY SURVEY #1175
HOOD RIVER COUNTY SURVEY #0823
PLAT OF BARRETT SIPMA ADDITION 1899

BASIS OF BEARING:
HOOD RIVER COUNTY SURVEY #94025



AREA TABLE:

TAX LOT	EXISTING LOT SIZE	ADJUSTED LOT SIZE
TAX LOT 8700	11,880 Sq.Ft.±	11,825 Sq.Ft.±
TAX LOT 8600	7,780 Sq.Ft.±	7,635 Sq.Ft.±

LINE BEARING DISTANCE

LINE	BEARING	DISTANCE
L1	N 04°17'08\"	5.50'
L2	N 04°17'08\"	5.50'

REGISTERED PROFESSIONAL LAND SURVEYOR
ERIK M. CARLSON
December 30, 2005
72306
Expires: December, 2009

- LEGEND:**
- SET 5/8" X 30" IRON ROD WITH PLASTIC CAP
 - FOUND MONUMENT OF RECORD AS NOTED
 - CALCULATED, NOT FOUND OR SET
 - () DEED OR PLAT CALL



TERRA SURVEYING
DATE MONUMENTED: JULY 20, 2009
SCALE: 1" = 20'
PROJECT: 209030
P.O. BOX 617
HOOD RIVER, OREGON 97031
PHONE & FAX: (541) 386-4531
terra@gorge.net
terrandsurveying.com

BOUNDARY LINE ADJUSTMENT SURVEY
for
RACHEL JOHNSTON