

# MONUMENTATION SURVEY OF 1/16th CORNER for HOOD RIVER COUNTY



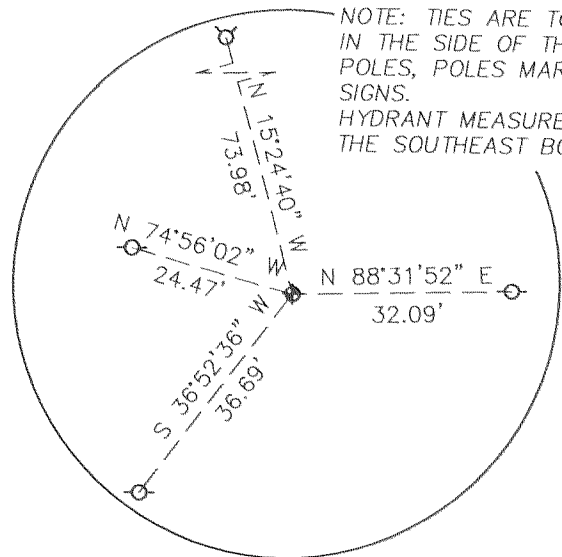
SCALE: 1" = 100'

**LEGEND:**

- ◆ RE-SET A 1906 WAGON SKEIN
- FOUND A 5/8" IRON ROD OF RECORD, L.S. 59002
- ⊙ FOUND MONUMENT OF RECORD, SEE FACE OF PLAT
- CALCULATED, NOT FOUND OR SET
- ⊖ UTILITY POLE
- ⊕ HYDRANT
- ( ) DEED OR PLAT CALL

CS 2009028  
By [Signature]  
6.29.09

NOTE: TIES ARE TO NAILS SET IN THE SIDE OF THE UTILITY POLES, POLES MARKED WITH SIGNS. HYDRANT MEASUREMENT IS TO THE SOUTHEAST BONNET BOLT.

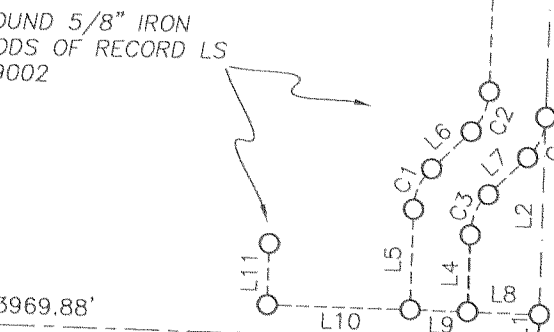


REFERENCE DETAIL  
NOT TO SCALE

PARCEL 2 OF HOOD RIVER PARTITION PLAT AS FILED WITH THE COUNTY SURVEYOR NO.2009-021

PARCEL 1 OF HOOD RIVER PARTITION PLAT AS FILED WITH THE COUNTY SURVEYOR NO.2009-021

FOUND 5/8" IRON RODS OF RECORD LS 59002



**NARRATIVE:**

THE PURPOSE OF THIS SURVEY IS TO REPLACE A WAGON SKEIN MONUMENTING THE TRUE C-E 1/16 CORNER IN SECTION 2 OF TOWNSHIP 2 NORTH, RANGE 10 EAST IN ITS ORIGINAL POSITION. THIS MONUMENT WAS DISTURBED WITH THE INSTALLATION OF A NEW WATER LINE. THE WAGON SKEIN WAS ORIGINALLY SET ON MAY 14TH 1909 BY P.M. MORSE TO REPLACE A OAK POST MARKING THE C-E 1/16TH CORNER. THIS MONUMENT WAS RESET USING CLOSES LOOP TRAVERSE.

**LOCATION OF SURVEY:**

LOCATED AT THE C-E 1/16TH CORNER OF SECTION 2, TOWNSHIP 2 NORTH, RANGE 10 EAST, WILLAMETTE MERIDIAN IN THE COUNTY OF HOOD RIVER AND STATE OF OREGON.

FOUND PIPE MONUMENTING WEST 1/4 CORNER OF SECTION 2. PREVIOUSLY TIED BY TERRA SURVEYING, SEE C.S. 2000-008.

S 88°53'46" E 3969.88'

N 89°08'03" W 1323.47'

TUCKER ROAD

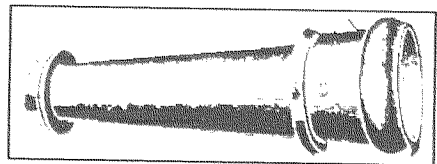


IMAGE OF A WAGON SKEIN LIKE THE ONE USED TO MONUMENT THE C-E 1/16 CORNER OF SECTION 2.

RESET WAGON SKEIN THAT WAS SET BY P.M. MORSE ON MAY 14th 1909. THE SKEIN WAS SET TO REPLACE THE ORIGINAL OAK POST MARKING THE CE 1/16.

SKEIN WAS RE-SET FLUSH WITH THE GROUND.

| LINE | BEARING       | DISTANCE |
|------|---------------|----------|
| L1   | N 01°20'44" E | 15.04'   |
| L2   | N 01°05'18" E | 102.44'  |
| L3   | N 01°05'44" E | 136.43'  |
| L4   | N 01°04'49" E | 40.03'   |
| L5   | N 01°07'12" E | 52.30'   |
| L6   | N 46°09'08" E | 28.19'   |
| L7   | N 45°58'21" E | 28.15'   |
| L8   | N 88°44'57" W | 37.53'   |
| L9   | N 88°50'42" W | 30.01'   |
| L10  | N 88°55'22" W | 74.51'   |
| L11  | N 01°04'38" E | 31.99'   |

REGISTERED  
PROFESSIONAL  
LAND SURVEYOR

OREGON  
DECEMBER 30, 2005  
ERIK M. CARLSON  
72306

Expires: December 31, 2009

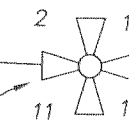
FOUND 3" BRASS CAP IN MONUMENT BOX.

11 1339.66'

N 88°12'57" W  
2679.32'

1339.66'

FOUND 3" BRASS CAP MONUMENTING THE SOUTHEAST CORNER OF SECTION 2.



| CURVE | RADIUS | ARC LENGTH | CHORD LENGTH | CHORD BEARING | DELTA ANGLE |
|-------|--------|------------|--------------|---------------|-------------|
| C1    | 30.05' | 23.70'     | 23.09'       | N 23°25'46" E | 45°10'36"   |
| C2    | 30.00' | 23.54'     | 22.94'       | N 23°35'07" E | 44°57'34"   |
| C3    | 30.11' | 23.66'     | 23.06'       | N 23°29'02" E | 45°01'39"   |
| C4    | 29.71' | 23.54'     | 22.93'       | N 23°41'27" E | 45°24'01"   |

**REFERENCES:**

- HOOD RIVER COUNTY SURVEY #2009-021
- HOOD RIVER COUNTY SURVEY #2008-002
- HOOD RIVER COUNTY SURVEY #2005-104
- HOOD RIVER COUNTY SURVEY #2000-008
- HOOD RIVER COUNTY FIELD NOTES (JLH) BOOK 1A PAGES 122 AND 123.

DATE: MAY 26, 2009  
SCALE: 1" = 100'  
PROJECT: 209042  
P.O. BOX 617  
HOOD RIVER, OREGON 97031  
PHONE & FAX: (541) 386-4531  
E-Mail: terra@gorge.net

TERRA SURVEYING

CS 2009 028

RECEIVED JUN 22 2009