

THE S.E. 1/4 OF SEC. 25, T. 3 N., R. 10 E., AND  
THE S.W. 1/4 OF SEC. 30, T. 3 N., R. 11 E., W.M.

HOOD RIVER COUNTY  
SURVEYOR'S OFFICE

CS# 2009 015

DATE FILED: 5-12-09

BY: *[Signature]*

NARRATIVE:

PURPOSE:

THE PURPOSE OF THIS SURVEY IS:

- 1) TO ESTABLISH PROJECT CONTROL AND DOCUMENT THE COORDINATE LOCATIONS OF CONTROL MONUMENTS.
- 2) TO DOCUMENT THE COORDINATE LOCATIONS OF FOUND MONUMENTS THAT MAY BE DISTURBED DURING CONSTRUCTION WITHIN THE POTENTIAL WORK LIMITS OF A FUTURE ODOT PROJECT.

HORIZONTAL NETWORK ADJUSTMENT

GPS OBSERVATIONS WERE MADE USING A TRIMBLE 5700 GPS RECEIVER WITH A ZEPHYR GEODETIC ANTENNA AND A TRIMBLE 5800 GPS RECEIVER/ANTENNA. THE MAIN CONTROL NETWORK WAS ESTABLISHED ON JULY 24-26, 2006 WITH TERRESTRIAL OBSERVATIONS MADE USING A TRIMBLE 5603 TOTAL STATION ON JULY 31, 2006. THE OBSERVATIONS WERE ADJUSTED USING STAR\*NET LEAST SQUARES ADJUSTMENT SOFTWARE. NAD 83 (CORS96)EPOCH:2002.0000 POSITIONS FOR STATIONS "ODOT2ND" AND "JETTY" WERE RESOLVED USING THE NATIONAL GEODETIC SURVEY'S (NGS) ON-LINE POSITIONING USER SERVICE (OPUS) AND WERE HELD IN THE ADJUSTMENT. VECTORS FROM NGS CONTINUALLY OPERATING REFERENCE STATION (CORS) "APPLETON CORS ARP" (HEREAFTER REFERRED TO AS STATION "GWEN" IN THIS SURVEY) WERE CALCULATED AND THE PUBLISHED NAD 83 (CORS96)EPOCH:2002.0000 POSITION FOR THAT STATION WAS ALSO HELD IN THE ADJUSTMENT.

PROPERTY MONUMENTS WERE COLLECTED ON VARIOUS OCCASIONS BETWEEN JULY 24, 2006 AND SEPTEMBER 30, 2008.

HORIZONTAL DATUM (LOCAL DATUM PLANE)

THE HORIZONTAL DATUM IS ON A LOCAL DATUM PLANE (LDP) REFERENCED TO OREGON COORDINATE SYSTEM OF 1983, NORTH ZONE (STATE PLANE) EXPRESSED IN INTERNATIONAL FEET, WHERE 1 FOOT=0.3048 METERS. A PROJECT COMBINED SCALE FACTOR OF 0.9999387816 WAS SELECTED USING THE SCALE FACTOR CALCULATED BY STAR\*NET AT STATION "JETTY". (TO CONVERT LDP COORDINATES TO STATE PLANE COORDINATES, MULTIPLY BY 0.9999387816.)

VERTICAL ADJUSTMENT

DIFFERENTIAL LEVELS WERE RUN FROM BENCHMARK "H533" TO BENCHMARK "M533" ON JULY 27, 2006 USING A LEICA DNO3 ELECTRONIC LEVEL. THE CLOSURE (SEE VERTICAL DATUM BELOW) WAS 0.021 FEET. THIS LOOP WAS ADJUSTED USING A PRORATION TO THE NUMBER OF TURNS. SUBSEQUENT LEVEL LOOPS RUN ON JULY 31, 2006 HAD CLOSURES OF 0.009 FEET OR LESS. NO ADJUSTMENTS WERE MADE TO THE SUBSEQUENT LEVEL LOOPS.

VERTICAL DATUM

THE VERTICAL DATUM IS THE NATIONAL AMERICAN VERTICAL DATUM OF 1988 REFERENCED TO OREGON STATE HIGHWAY DIVISION BENCH MARK DESIGNATION "H533", A 3" BRASS DISK IN THE CONCRETE SIDEWALK OF THE I-84 WESTBOUND BRIDGE OVER THE RAILWAY TRACKS, APPROXIMATELY 1 MILE WEST OF THE HOOD RIVER 2ND AVENUE EXIT (EXIT 63). PUBLISHED ELEVATION = 38.516 METERS OR 126.36 FEET.

BASIS OF BEARINGS

THE BASIS OF BEARINGS IS THE OREGON COORDINATE SYSTEM OF 1983, NORTH ZONE. THE GRID BEARING FROM POINT "JETTY" TO POINT "ODOT2ND" IS S74°21'08"W.

BOUNDARY MONUMENTS

BOUNDARY MONUMENTS WERE LOCATED FROM ESTABLISHED CONTROL BEGINNING JULY 25, 2006 THROUGH JANUARY 7, 2009

INDEX	
SHEET 1	NARRATIVE AND CONTROL STATION DESCRIPTIONS
SHEET 2	NETWORK OBSERVATIONS AND ADJUSTMENTS
SHEETS 3 AND 4	MONUMENT RECOVERY POSITIONS, AND DESCRIPTIONS

NETWORK/TRaverse POINT COORDINATE/DESCRIPTION TABLE LDP = LOCAL DATUM PLANE (SEE NARRATIVE)

PT. NO.	LDP NORTHING	LDP EASTING	ELEV.	DESCRIPTION
E.END	746274.9875	7949320.0998	100.42	SET 5/8"x30" IRON ROD W/BPC STAMPED "BLUEDOT CONTROL"
EXIT64	746739.5654	7946629.7982	101.99	SET 5/8"x30" IRON ROD W/BPC STAMPED "BLUEDOT CONTROL"
GWEN	772567.6736	7991464.2070	-	VECTORS FROM NGS CONTINUALLY OPERATING REFERENCE STATION (CORS) "APPLETON CORS ARP"
JETTY	747918.6603	7946902.3630	91.83	SET 5/8"x30" IRON ROD W/BPC STAMPED "BLUEDOT CONTROL"
ODOT2ND	747124.1266	7944065.7969	118.06	FOUND 5/8" IRON ROD, IN CONCRETE W/RPC STAMPED "ODOT TRAVERSE"
ODOTcp	746685.6700	7944937.3296	106.48	FOUND 5/8" IRON ROD, IN CONCRETE W/RPC STAMPED "ODOT TRAVERSE"
ODOTcq	746903.5549	7945241.2729	94.58	FOUND 5/8" IRON ROD W/RPC STAMPED "ODOT TRAVERSE"
ODOTcr	746836.2828	7946060.4859	101.65	FOUND 5/8" IRON ROD W/RPC STAMPED "ODOT TRAVERSE"
H533	747724.9+/-	7941673.4515	126.36	FOUND 3" BRASS MONUMENT IN CONCRETE, INSCRIBED "BM NO. H533"
M533	746133.7+/-	7949595.4318	104.01	FOUND 3" DOMED BRASS MONUMENT IN ROCK, INSCRIBED "STATE HIGHWAY DEPARTMENT M533"

REGISTERED PROFESSIONAL LAND SURVEYOR  
*[Signature]*  
OREGON  
JULY 14, 1998  
ROBERT C. LENNOX  
2886  
RENEWAL: 12-31-10

**bluedot group**  
land surveying & mapping  
11700 sw 67th ave  
portland, or 97223  
v. 503.624.0108  
f. 503.624.9058

CAD FILE: 08019\_CNTRL-MON ROS.DGN

OREGON DEPARTMENT OF TRANSPORTATION  
HORIZONTAL CONTROL AND RECOVERY MAP  
CITY OF HOOD RIVER  
U.S. HIGHWAY (INTERSTATE) 84  
HOOD RIVER COUNTY, OREGON  
MARCH 18, 2009 FOR ODOT REGION 1 SCALE: N/A  
123 NW FLANDERS, PORTLAND, OR 97209  
BUNDLE 224 SHEET 1 OF 4

CS 2009 015-1

**LEGEND**

- ▲ SET NETWORK POINT
- △ FOUND NETWORK POINT
- ⊕ EXISTING BENCH MARK
- TERRESTRIAL OBSERVATION LINE
- GPS OBSERVATION
- OPUS ONLINE POSITIONING USER SERVICE (SEE NARRATIVE - SHEET 1)

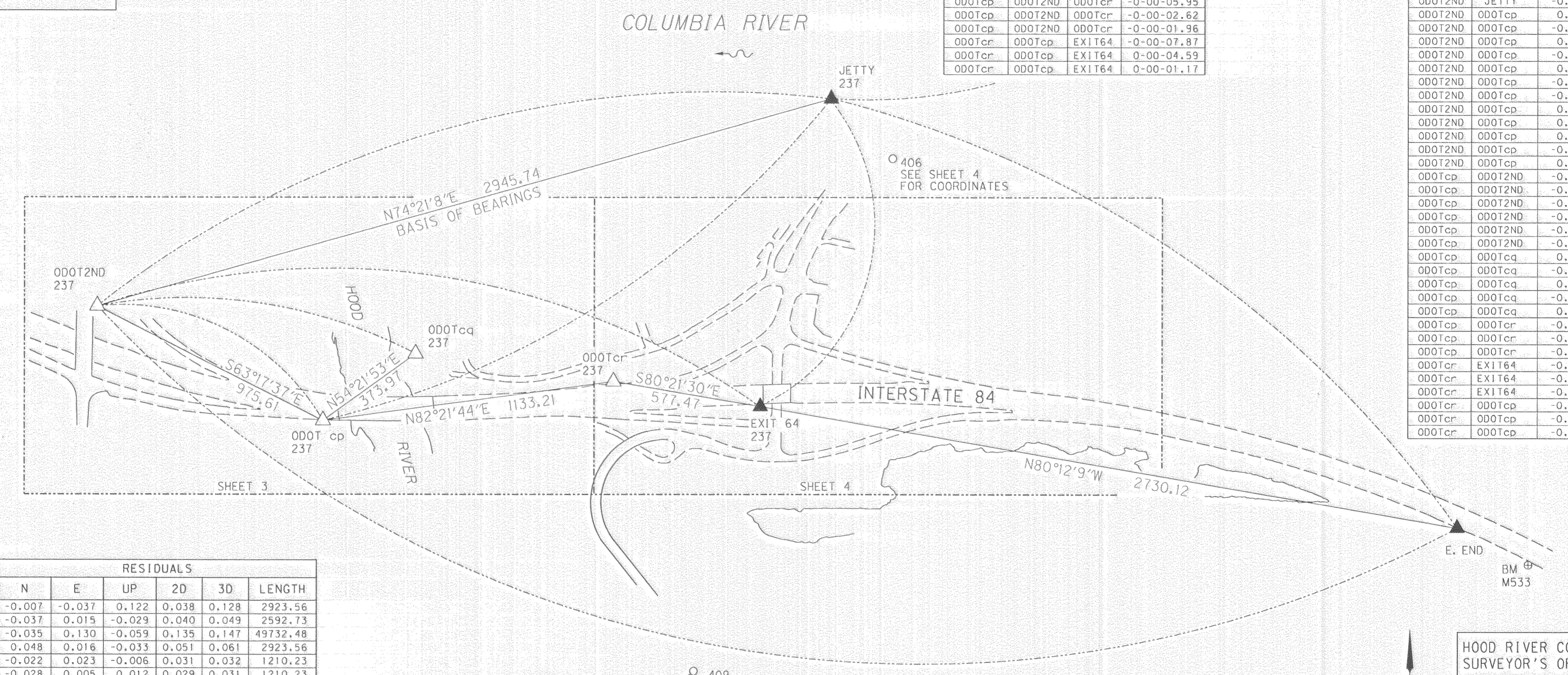
THE S.E. 1/4 OF SEC. 25, T. 3 N., R. 10 E., AND THE S.W. 1/4 OF SEC. 30, T. 3 N., R. 11 E., W.M.

ANGLE RESIDUALS INSTR. = INSTRUMENT B.S. = BACKSIGHT F.S. = FORE SIGHT

INSTR.	B.S.	F.S.	RESIDUAL
ODOT2ND	JETTY	ODOTcp	0-00-03.96
ODOT2ND	JETTY	ODOTcp	-0-00-01.62
ODOT2ND	JETTY	ODOTcp	-0-00-00.04
ODOT2ND	ODOTcp	JETTY	-0-00-02.15
ODOT2ND	ODOTcp	JETTY	0-00-01.81
ODOTcp	ODOT2ND	ODOTcp	-0-00-02.72
ODOTcp	ODOT2ND	ODOTcp	-0-00-02.26
ODOTcp	ODOT2ND	ODOTcp	0-00-01.68
ODOTcp	ODOT2ND	ODOTcp	0-00-01.44
ODOTcp	ODOT2ND	ODOTcp	0-00-00.36
ODOTcp	ODOT2ND	ODOTcp	-0-00-05.95
ODOTcp	ODOT2ND	ODOTcp	-0-00-02.62
ODOTcp	ODOT2ND	ODOTcp	-0-00-01.96
ODOTcp	ODOTcp	EXIT64	-0-00-07.87
ODOTcp	ODOTcp	EXIT64	0-00-04.59
ODOTcp	ODOTcp	EXIT64	0-00-01.17

DISTANCE RESIDUALS

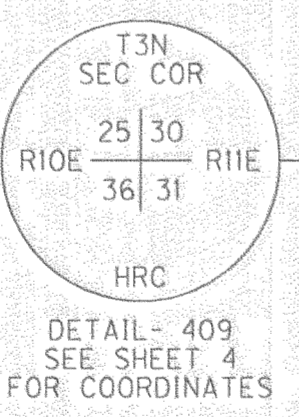
FROM	TO	RESIDUAL
EXIT64	E.END	-0.006
EXIT64	E.END	-0.005
EXIT64	E.END	-0.004
EXIT64	E.END	-0.004
EXIT64	E.END	-0.002
EXIT64	E.END	0.001
ODOT2ND	JETTY	-0.023
ODOT2ND	JETTY	-0.021
ODOT2ND	JETTY	-0.020
ODOT2ND	JETTY	-0.009
ODOT2ND	JETTY	-0.006
ODOT2ND	ODOTcp	0.005
ODOT2ND	ODOTcp	-0.004
ODOT2ND	ODOTcp	0.004
ODOT2ND	ODOTcp	-0.003
ODOT2ND	ODOTcp	0.003
ODOT2ND	ODOTcp	-0.002
ODOT2ND	ODOTcp	-0.002
ODOT2ND	ODOTcp	0.001
ODOT2ND	ODOTcp	0.001
ODOT2ND	ODOTcp	0.001
ODOT2ND	ODOTcp	-0.000
ODOT2ND	ODOTcp	0.000
ODOTcp	ODOT2ND	-0.005
ODOTcp	ODOT2ND	-0.004
ODOTcp	ODOT2ND	-0.004
ODOTcp	ODOT2ND	-0.004
ODOTcp	ODOT2ND	-0.003
ODOTcp	ODOT2ND	-0.003
ODOTcp	ODOT2ND	-0.003
ODOTcp	ODOT2ND	-0.003
ODOTcp	ODOT2ND	-0.003
ODOTcp	ODOTcp	0.001
ODOTcp	ODOTcp	-0.010
ODOTcp	ODOTcp	-0.003
ODOTcp	ODOTcp	-0.003
ODOTcp	EXIT64	-0.007
ODOTcp	EXIT64	-0.006
ODOTcp	EXIT64	-0.002
ODOTcp	ODOTcp	-0.001
ODOTcp	ODOTcp	-0.000
ODOTcp	ODOTcp	-0.000



BM H533  
ODOT 1187+00  
SEE SHEET 3 FOR COORDINATES

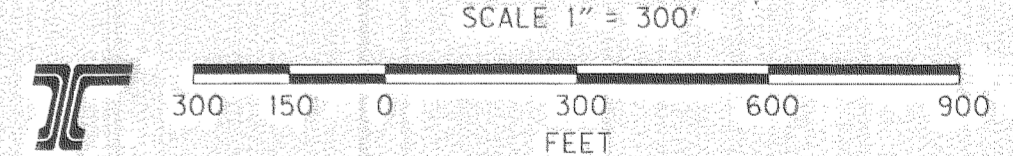
**GPS VECTORS**

FROM	TO	RESIDUALS						
		N	E	UP	2D	3D	LENGTH	
E.END	JETTY	-0.007	-0.037	0.122	0.038	0.128	2923.56	
EXIT64	ODOT2ND	-0.037	0.015	-0.029	0.040	0.049	2592.73	
GWEN	E.END	-0.035	0.130	-0.059	0.135	0.147	49732.48	
JETTY	E.END	0.048	0.016	-0.033	0.051	0.061	2923.56	
JETTY	EXIT64	-0.022	0.023	-0.006	0.031	0.032	1210.23	
JETTY	EXIT64	-0.028	0.005	0.012	0.029	0.031	1210.23	
JETTY	ODOT2ND	-0.057	0.015	-0.071	0.059	0.092	2945.86	
JETTY	ODOT2ND	-0.004	0.089	-0.007	0.089	0.089	2945.86	
JETTY	ODOT2ND	-0.044	0.011	-0.072	0.045	0.085	2945.86	
JETTY	ODOTcp	-0.054	0.079	0.048	0.096	0.107	2319.88	
ODOT2ND	E.END	0.057	-0.004	-0.045	0.057	0.073	5322.51	
ODOT2ND	EXIT64	0.022	-0.008	-0.020	0.023	0.030	2592.73	
ODOT2ND	JETTY	0.042	-0.018	0.088	0.046	0.100	2945.86	
ODOT2ND	ODOTcp	0.047	0.002	-0.036	0.047	0.059	975.68	
ODOT2ND	ODOTcp	-0.015	-0.007	0.032	0.017	0.036	1196.22	
ODOT2ND	ODOTcp	-0.024	0.000	0.024	0.024	0.034	1196.22	
ODOT2ND	ODOTcr	0.049	0.007	-0.037	0.049	0.061	2015.42	
ODOT2ND	ODOTcr	-0.011	-0.010	-0.006	0.015	0.016	2015.42	



HOOD RIVER COUNTY SURVEYOR'S OFFICE  
CS# 2009 015  
DATE FILED: 5-12-09  
BY: [Signature]

REGISTERED PROFESSIONAL LAND SURVEYOR  
[Signature]  
OREGON JULY 14, 1998  
ROBERT C. LENNOX 2886  
RENEWAL: 12-31-10



NETWORK/TRVERSE POINT COORDINATE CONVERSION TABLE SPC = STATE PLANE COORDINATE ELEV. = ELEVATION LDP = LOCAL DATUM PLANE (SEE NARRATIVE - SHEET 1)

PT. NO.	LATITUDE (N)	LONGITUDE (W)	SPC NORTHING	SPC EASTING	LDP NORTHING	LDP EASTING	ELEV.	SEMI MAJOR AXIS	ORIENTATION	SEMI MINOR AXIS
E.END	45°42'33.224316"	121°29'29.216121"	746229.3017	7948833.4552	746274.9875	7949320.0998	100.42	0.0629	8°02'	0.0149
EXIT64	45°42'37.482825"	121°30'07.204849"	746693.8512	7946143.3183	746739.5654	7946629.7982	101.99	0.0323	5°50'	0.0118
GWEN	45°46'57.461570"	121°19'39.167180"	772520.3782	7990974.9824	772567.6736	7991464.2070	-	HELD	HELD	HELD
JETTY	45°42'49.155830"	121°30'03.570070"	747872.8739	7946415.8664	747918.6603	7946902.3630	91.83	HELD	HELD	HELD
ODOT2ND	45°42'40.963580"	121°30'43.401340"	747078.3888	7943579.4739	747124.1266	7944065.7969	118.06	HELD	HELD	HELD
ODOTcp	45°42'36.742878"	121°30'31.043470"	746639.9591	7944450.9533	746685.6700	7944937.3296	106.48	0.0139	26°11'	0.0046
ODOTcp	45°42'38.931206"	121°30'26.798990"	746857.8306	7944754.8780	746903.5549	7945241.2729	94.58	0.0189	5°53'	0.0094
ODOTcr	45°42'38.367805"	121°30'15.243815"	746790.5627	7945574.0409	746836.2828	7946060.4859	101.65	0.0246	4°43'	0.0099
H533	45°42'46.597838"	121°31'17.218771"	747679.2122	7941187.2750	747724.9867	7941673.4515	126.36	-	-	-
M533	45°42'31.863437"	121°29'25.312169"	746088.0767	7949108.7704	746133.7538	7949595.4318	104.01	-	-	-

bluedot group  
land surveying & mapping  
11700 sw 67th ave  
portland, or 97223  
v. 503.624.0108  
f. 503.624.9058

OREGON DEPARTMENT OF TRANSPORTATION  
HORIZONTAL CONTROL AND RECOVERY MAP  
CITY OF HOOD RIVER  
U.S. HIGHWAY (INTERSTATE) 84  
HOOD RIVER COUNTY, OREGON  
MARCH 18, 2009 FOR ODOT REGION 1 SCALE: 1" = 300'  
123 NW FLANDERS, PORTLAND, OR 97209  
BUNDLE 224 SHEET 2 OF 4

THE S.E. 1/4 OF SEC. 25, T. 3 N., R. 10 E., AND  
THE S.W. 1/4 OF SEC. 30, T. 3 N., R. 11 E., W.M.

HOOD RIVER COUNTY  
SURVEYOR'S OFFICE

CS# 2009 015

DATE FILED: 5-12-09

BY: *Adapt*

LEGEND

- ▲ SET NETWORK PT. --- EDGE OF ASPHALT
- △ FOUND NETWORK PT. --- EDGE OF WATER
- FOUND MONUMENT AS NOTED --- DONATION LAND CLAIM LINE
- ▭ CONCRETE BRIDGE



SEE SHEET 2 FOR CONTROL COORDINATES

FOUND MONUMENT COORDINATE TABLE LDP = LOCAL DATUM PLANE (SEE NARRATIVE - SHEET 1) CS = COUNTY SURVEY RECORD NUMBER

PT. NO.	LDP NORTHING	LDP EASTING	DESCRIPTION
524	747377.58	7943341.63	FOUND 2" DIA ALUMINUM MONUMENT IN MONUMENT CASE INSCRIBED, "ODOT 1187+00" - DOWN 0.5' [SEE SHEET 2 OF 4]
401	746815.33	7945625.63	FOUND 5/8" DIA. BENT IRON ROD W/O CAP - DOWN 0.7' (NO RECORD)
402	746886.95	7945878.31	FOUND 1/4" DIA. BENT IRON ROD W/O CAP - DOWN 0.2' (NO RECORD)
410	746424.52	7945500.94	FOUND 3" DIA. BRASS DISK ON 2" DIA. IRON PIPE INSCRIBED "BONNEVILLE POWER NAVIGATION PROJECT CORPS OF ENGINEERING US ARMY" "C-40" - UP 1.8' (CS 1935-37 ARMY CORPS OF ENGINEERS)
411	747480.41	7945515.64	FOUND 3-1/4" DIA. BRASS DISK IN ASPHALT - FLUSH (CS 2008-036)
450	747034.48	7945458.00	FOUND 5/8" DIA. IRON ROD WITH A YELLOW PLASTIC CAP INSCRIBED "TERRA OR PLS 72306" (CS 2008-036)
451	746803.95	7945607.22	FOUND 5/8" DIA. IRON ROD WITH A YELLOW PLASTIC CAP INSCRIBED "TERRA OR PLS 72306" (CS 2008-036)
452	746814.02	7945635.58	FOUND 5/8" DIA. IRON ROD WITH A YELLOW PLASTIC CAP INSCRIBED "TERRA OR PLS 72306" (CS 2008-036)
453	746855.98	7945630.08	FOUND 5/8" DIA. IRON ROD WITH A YELLOW PLASTIC CAP INSCRIBED "TERRA OR PLS 72306" (CS 2008-036)
454	746869.02	7945707.01	FOUND 5/8" DIA. IRON ROD WITH A YELLOW PLASTIC CAP INSCRIBED "TERRA OR PLS 72306" (CS 2008-036)
455	746864.22	7945705.63	FOUND 5/8" DIA. IRON ROD WITH A YELLOW PLASTIC CAP INSCRIBED "TERRA OR PLS 72306" (CS 2008-036)
456	746880.05	7945884.22	FOUND 5/8" DIA. IRON ROD WITH A YELLOW PLASTIC CAP INSCRIBED "TERRA OR PLS 72306" (CS 2008-036)
457	746989.39	7945889.75	FOUND 5/8" DIA. IRON ROD WITH A YELLOW PLASTIC CAP INSCRIBED "TERRA OR PLS 72306" (CS 2008-036)
468	746919.85	7945501.65	FOUND 1/4" DIA. IRON ROD W/O CAP - DOWN 0.3' (NO RECORD)

REGISTERED  
PROFESSIONAL  
LAND SURVEYOR

*Robert C. Lennox*  
OREGON  
JULY 14, 1998  
ROBERT C. LENNOX  
2886

RENEWAL: 12-31-10

**bluedot**  
group

land surveying & mapping  
11700 sw 67th ave  
portland, or 97223  
v. 503.624.0108  
f. 503.624.9058

SCALE 1" = 100'



CAD FILE: 08019 CNTRL-MON ROS.DGN

OREGON DEPARTMENT OF TRANSPORTATION  
HORIZONTAL CONTROL AND RECOVERY MAP  
CITY OF HOOD RIVER  
U.S. HIGHWAY (INTERSTATE) 84  
HOOD RIVER COUNTY, OREGON

MARCH 18, 2009 FOR ODOT REGION 1 SCALE: 1" = 100'  
123 NW FLANDERS, PORTLAND, OR 97209

BUNDLE 224

SHEET 3 OF 4

CS 2009 015.3

LEGEND

- ▲ SET NETWORK PT.    - - - - EDGE OF ASPHALT
- △ FOUND NETWORK PT.    - - - - EDGE OF WATER
- FOUND MONUMENT AS NOTED    - - - - DONATION LAND CLAIM LINE
- ▭ CONCRETE BRIDGE

~ ~ ~ COLUMBIA RIVER ~ ~ ~

THE S.E. 1/4 OF SEC. 25, T. 3 N., R. 10 E., AND  
THE S.W. 1/4 OF SEC. 30, T. 3 N., R. 11 E., W.M.

HOOD RIVER COUNTY  
SURVEYOR'S OFFICE

CS# 2009 015

DATE FILED: 5-12-09

BY: *Roby Felts*



SEE SHEET 4  
MATCH LINE

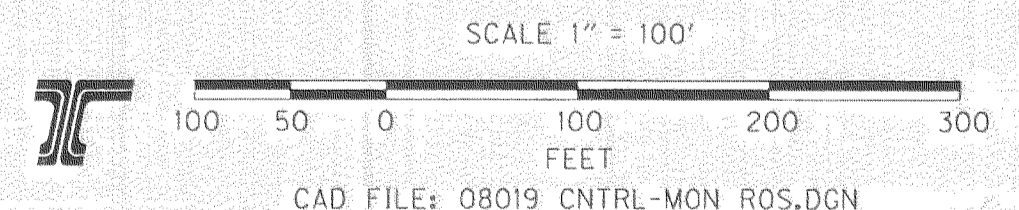
SEE SHEET 2 FOR CONTROL COORDINATES

FOUND MONUMENT COORDINATE TABLE    LDP = LOCAL DATUM PLANE (SEE NARRATIVE - SHEET 1)    CS = COUNTY SURVEY RECORD NUMBER

PT. NO.	LDP NORTHING	LDP EASTING	DESCRIPTION
403	747176.09	7946656.70	FOUND 3-1/2" DIA. BRASS DISK IN CONCRETE STAMPED "US COAST & GEODETIC SURVEY" "CLOVER 1957" - FLUSH (NO RECORD)
404	747042.18	7946827.11	FOUND 5/8" DIA. IRON ROD WITH A YELLOW PLASTIC CAP INSCRIBED "PLS 385" - UP 0.1' (CS 98044)
405	747010.69	7946851.89	FOUND 5/8" DIA. IRON ROD WITH A YELLOW PLASTIC CAP INSCRIBED "PLS 385" - UP 0.4' (CS 98044)
406	747689.89	7947140.58	FOUND 5/8" DIA. IRON ROD WITH A YELLOW PLASTIC CAP INSCRIBED "PLS 385" - FLUSH (CS 98044) [SEE SHEET 2 OF 4]
407	746904.73	7947359.11	FOUND 5/8" DIA. IRON ROD WITH A YELLOW PLASTIC CAP CAP SMASHED AND ILLEGIBLE - FLUSH (CS 98044)
408	746831.55	7947858.91	FOUND 5/8" DIA. IRON ROD WITH A YELLOW PLASTIC CAP INSCRIBED "PLS 385" - DOWN 0.1' (CS 98044)
409	745723.78	7946373.10	FOUND 3-1/2" DIA. BRASS DISK - FLUSH [SEE SHEET 2 OF 4 FOR DETAIL AND LOCATION]
458	746924.64	7946111.60	FOUND 5/8" DIA. IRON ROD WITH A YELLOW PLASTIC CAP INSCRIBED "TERRA OR PLS 72306" (CS 2008-036)
459	746921.90	7946147.20	FOUND 5/8" DIA. IRON ROD WITH A YELLOW PLASTIC CAP INSCRIBED "TERRA OR PLS 72306" (CS 2008-036)
460	746999.96	7946296.83	FOUND 5/8" DIA. IRON ROD WITH A YELLOW PLASTIC CAP INSCRIBED "TERRA OR PLS 72306" (CS 2008-036)
461	747051.36	7946388.84	FOUND 5/8" DIA. IRON ROD WITH A YELLOW PLASTIC CAP INSCRIBED "TERRA OR PLS 72306" (CS 2008-036)
462	747106.47	7946487.58	FOUND 5/8" DIA. IRON ROD WITH A YELLOW PLASTIC CAP INSCRIBED "TERRA OR PLS 72306" (CS 2008-036)
463	747126.97	7946506.96	FOUND 5/8" DIA. IRON ROD WITH A YELLOW PLASTIC CAP INSCRIBED "TERRA OR PLS 72306" (CS 2008-036)
464	747272.20	7946801.77	FOUND 5/8" DIA. IRON ROD WITH A YELLOW PLASTIC CAP INSCRIBED "TERRA OR PLS 72306" (CS 2008-036)
465	747265.88	7946861.40	FOUND 5/8" DIA. IRON ROD WITH A YELLOW PLASTIC CAP INSCRIBED "TERRA OR PLS 72306" (CS 2008-036)
466	747056.65	7946830.17	FOUND 3/4" DIA. BRASS WASHER WITH A YELLOW PLASTIC CAP INSCRIBED "TERRA OR PLS 72306" (CS 2008-036)
467	747027.57	7946853.89	FOUND 5/8" DIA. IRON ROD WITH A YELLOW PLASTIC CAP INSCRIBED "TERRA OR PLS 72306" (CS 2008-036)

REGISTERED  
PROFESSIONAL  
LAND SURVEYOR  
*Robert C. Lennox*  
OREGON  
JULY 14, 1998  
ROBERT C. LENNOX  
2886  
RENEWAL: 12-31-10

**bluedot**  
group  
land surveying & mapping  
11700 sw 67th ave  
portland, or 97223  
v. 503.624.0108  
f. 503.624.9058



OREGON DEPARTMENT OF TRANSPORTATION  
HORIZONTAL CONTROL AND RECOVERY MAP  
CITY OF HOOD RIVER  
U.S. HIGHWAY (INTERSTATE) 84  
HOOD RIVER COUNTY, OREGON  
MARCH 18, 2009    FOR ODOT REGION 1    SCALE: 1" = 100'  
123 NW FLANDERS, PORTLAND, OR 97209  
BUNDLE 224    SHEET 4 OF 4

CS 2009 015.4