

BOUNDARY LINE ADJUSTMENT APPROVAL

APPROVED FOR FILING THIS 16 DAY OF MARCH, 2009.

*[Signature]*  
CITY MANAGER OF CASCADE LOCKS

BOUNDARY LINE ADJUSTMENT  
for  
PORT OF CASCADE LOCKS

REGISTERED  
PROFESSIONAL  
LAND SURVEYOR

OREGON  
December 30, 2005  
ERIK M. CARLSON  
72306

Expires: December, 2009

HOOD RIVER COUNTY  
SURVEYOR'S OFFICE

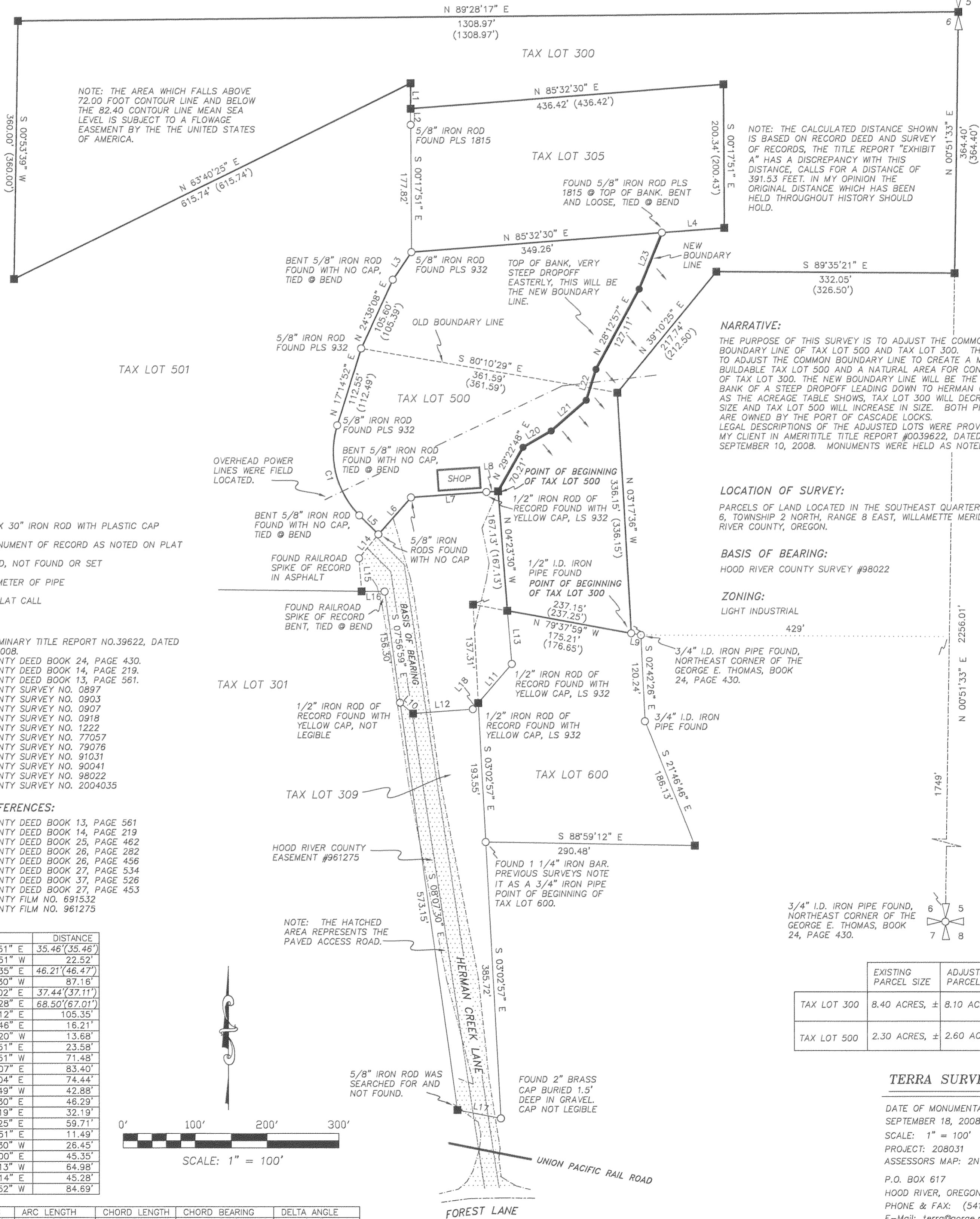
CS# 2009 014

DATE FILED: 4-6-09

BY: *[Signature]*

OWNERS:  
PORT OF CASCADE LOCKS  
MARINE PARK  
PH. 541.374.8619

POINT OF BEGINNING OF  
TAX LOT 300



NOTE: THE AREA WHICH FALLS ABOVE 72.00 FOOT CONTOUR LINE AND BELOW THE 82.40 CONTOUR LINE MEAN SEA LEVEL IS SUBJECT TO A FLOWAGE EASEMENT BY THE THE UNITED STATES OF AMERICA.

NOTE: THE CALCULATED DISTANCE SHOWN IS BASED ON RECORD DEED AND SURVEY OF RECORDS, THE TITLE REPORT "EXHIBIT A" HAS A DISCREPANCY WITH THIS DISTANCE, CALLS FOR A DISTANCE OF 391.53 FEET. IN MY OPINION THE ORIGINAL DISTANCE WHICH HAS BEEN HELD THROUGHOUT HISTORY SHOULD HOLD.

NARRATIVE:

THE PURPOSE OF THIS SURVEY IS TO ADJUST THE COMMON BOUNDARY LINE OF TAX LOT 500 AND TAX LOT 300. THE GOAL IS TO ADJUST THE COMMON BOUNDARY LINE TO CREATE A MORE BUILDABLE TAX LOT 500 AND A NATURAL AREA FOR CONSERVATION OF TAX LOT 300. THE NEW BOUNDARY LINE WILL BE THE TOP OF BANK OF A STEEP DROPOFF LEADING DOWN TO HERMAN CREEK. AS THE ACREAGE TABLE SHOWS, TAX LOT 300 WILL DECREASE IN SIZE AND TAX LOT 500 WILL INCREASE IN SIZE. BOTH PROPERTIES ARE OWNED BY THE PORT OF CASCADE LOCKS. LEGAL DESCRIPTIONS OF THE ADJUSTED LOTS WERE PROVIDED BY MY CLIENT IN AMERITITLE TITLE REPORT #0039622, DATED SEPTEMBER 10, 2008. MONUMENTS WERE HELD AS NOTED.

LOCATION OF SURVEY:

PARCELS OF LAND LOCATED IN THE SOUTHEAST QUARTER OF SECTION 6, TOWNSHIP 2 NORTH, RANGE 8 EAST, WILLAMETTE MERIDIAN, HOOD RIVER COUNTY, OREGON.

BASIS OF BEARING:

HOOD RIVER COUNTY SURVEY #98022

ZONING:

LIGHT INDUSTRIAL

LEGEND:

- SET 5/8" X 30" IRON ROD WITH PLASTIC CAP
- FOUND MONUMENT OF RECORD AS NOTED ON PLAT
- CALCULATED, NOT FOUND OR SET
- I.D. INSIDE DIAMETER OF PIPE
- ( ) DEED OR PLAT CALL

REFERENCES:

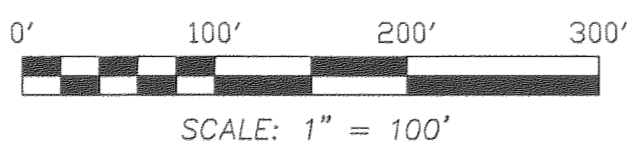
- AMERITITLE PRELIMINARY TITLE REPORT NO.39622, DATED SEPTEMBER 10, 2008.  
HOOD RIVER COUNTY DEED BOOK 24, PAGE 430.  
HOOD RIVER COUNTY DEED BOOK 14, PAGE 219.  
HOOD RIVER COUNTY DEED BOOK 13, PAGE 561.  
HOOD RIVER COUNTY SURVEY NO. 0897  
HOOD RIVER COUNTY SURVEY NO. 0903  
HOOD RIVER COUNTY SURVEY NO. 0907  
HOOD RIVER COUNTY SURVEY NO. 0918  
HOOD RIVER COUNTY SURVEY NO. 1222  
HOOD RIVER COUNTY SURVEY NO. 77057  
HOOD RIVER COUNTY SURVEY NO. 79076  
HOOD RIVER COUNTY SURVEY NO. 91031  
HOOD RIVER COUNTY SURVEY NO. 90041  
HOOD RIVER COUNTY SURVEY NO. 98022  
HOOD RIVER COUNTY SURVEY NO. 2004035

EASEMENT REFERENCES:

- HOOD RIVER COUNTY DEED BOOK 13, PAGE 561  
HOOD RIVER COUNTY DEED BOOK 14, PAGE 219  
HOOD RIVER COUNTY DEED BOOK 25, PAGE 462  
HOOD RIVER COUNTY DEED BOOK 26, PAGE 282  
HOOD RIVER COUNTY DEED BOOK 26, PAGE 456  
HOOD RIVER COUNTY DEED BOOK 27, PAGE 534  
HOOD RIVER COUNTY DEED BOOK 37, PAGE 526  
HOOD RIVER COUNTY DEED BOOK 27, PAGE 453  
HOOD RIVER COUNTY FILM NO. 691532  
HOOD RIVER COUNTY FILM NO. 961275

LINE	BEARING	DISTANCE
L1	S 00°17'51" E	35.46' (35.46')
L2	N 00°17'51" W	22.52'
L3	N 34°03'35" E	46.21' (46.47')
L4	S 85°32'30" W	87.16'
L5	S 45°06'02" E	37.44' (37.11')
L6	N 41°27'28" E	68.50' (67.01')
L7	N 85°52'12" E	105.35'
L8	N 86°13'46" E	16.21'
L9	N 79°46'20" W	13.68'
L10	S 50°14'51" E	23.58'
L11	S 40°35'51" W	71.48'
L12	N 85°55'07" E	83.40'
L13	S 04°53'04" E	74.44'
L14	S 38°52'49" W	42.88'
L15	S 04°23'30" E	46.29'
L16	S 89°22'19" E	32.19'
L17	S 78°55'25" E	59.71'
L18	N 40°35'51" E	11.49'
L19	S 85°32'30" W	26.45'
L20	N 59°58'00" E	45.35'
L21	S 48°41'13" W	64.98'
L22	N 17°17'14" E	45.28'
L23	S 21°53'52" W	84.69'

CURVE	RADIUS	ARC LENGTH	CHORD LENGTH	CHORD BEARING	DELTA ANGLE
C1	125.00'	135.50'	128.96'	N 13°46'26" W	62°06'24"



	EXISTING PARCEL SIZE	ADJUSTED PARCEL SIZE
TAX LOT 300	8.40 ACRES, ±	8.10 ACRES, ±
TAX LOT 500	2.30 ACRES, ±	2.60 ACRES, ±

TERRA SURVEYING

DATE OF MONUMENTATION:  
SEPTEMBER 18, 2008  
SCALE: 1" = 100'  
PROJECT: 208031  
ASSESSORS MAP: 2N 8E 06  
P.O. BOX 617  
HOOD RIVER, OREGON 97031  
PHONE & FAX: (541) 386-4531  
E-mail: terra@gorge.net

RECEIVED MAR 17 2009

CS 2009 014

CS2009 014