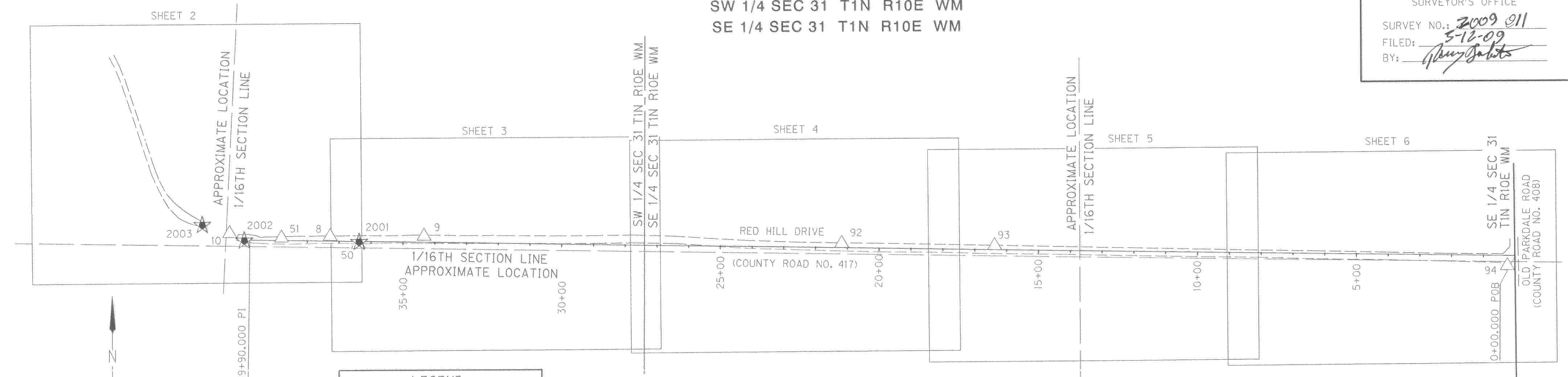


SURVEY NO.: 2009 011
FILED: 3-12-09
BY: *[Signature]*

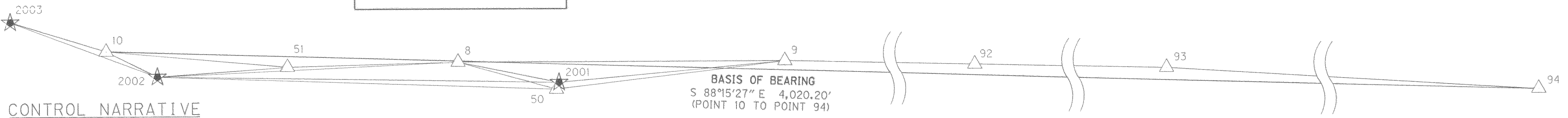
SW 1/4 SEC 31 T1N R10E WM
SE 1/4 SEC 31 T1N R10E WM



LEGEND

- ★ SET GPS STATION
- △ FOUND NETWORK POINT

SHEET LAYOUT DIAGRAM
NOT TO SCALE



LEGEND

- ★ SET GPS STATION
- △ FOUND NETWORK POINT
- △-★ LINES OF OBSERVATION (NOT INTERVISIBLE)
- △-★ LINES OF OBSERVATION (INTERVISIBLE)

CONTROL NETWORK SCHEMATIC &
BASIS OF BEARING
NOT TO SCALE

CONTROL NARRATIVE

PROJECT: MIDDLE FORK HOOD RIVER BRIDGE DESIGN
LOCATION: PARKDALE, OREGON
OBEC PROJECT: 108-114
SURVEY DATUM:
HORIZONTAL - PRIMARY HORIZONTAL CONTROL WAS IS BASED ON AN ASSUMED COORDINATE SYSTEM PROVIDED BY THE UNITED STATES FOREST SERVICE.

NARRATIVE

THE PURPOSE OF THIS SURVEY IS TO PERPETUATE THE LOCATION OF THE SURVEY MONUMENTS OF RECORD THAT MAY BE DESTROYED BY FUTURE CONSTRUCTION IMPROVEMENTS. IT IS NOT THE INTENT OF THIS SURVEY TO RESOLVE THE LOCATION OF THE EXISTING CENTERLINE OR RIGHT OF WAY OF RED HILL ROAD OR OLD PARKDALE ROAD; THEREFORE THE RIGHT OF WAY LINES SHOWN ON THIS SURVEY ARE APPROXIMATE. PERPETUATION OF THE MONUMENT LOCATIONS WAS ACCOMPLISHED BY TYING THE MONUMENTS TO THE PROJECT CONTROL NETWORK. THIS SURVEY MEETS THE REQUIREMENTS FOR A RECOVERY SURVEY AS OUTLINED IN THE OREGON REVISED STATUTES CHAPTER 209.155.

THIS SURVEY WAS PERFORMED IN INTERNATIONAL FEET UNITS.

THIS SURVEY WAS PERFORMED DURING THE MONTHS OF OCTOBER AND NOVEMBER 2008. THE SURVEY EQUIPMENT USED CONSISTED OF TRIMBLE DUAL FREQUENCY GPS RECEIVERS, TRIMBLE S6 ROBOTIC TOTAL STATION AND TSC2 DATA COLLECTORS.

NETWORK POINT TABLE

PT ID	NORTHING	EASTING	DATE	DESCRIPTION
8	3000.00	4705.75	10/28/08	FOUND ALUMINUM SPIKE
9	3000.00	5000.00	10/28/08	FOUND MAG NAIL W/ FLAGGING
10	3010.60	4389.74	10/28/08	FOUND MAG NAIL W/ FLAGGING
50	2975.50	4794.15	10/28/08	FOUND MAG NAIL W/ FLAGGING
51	2996.05	4552.64	10/28/08	FOUND MAG NAIL W/ FLAGGING
92	2970.67	6315.99	10/28/08	FOUND MAG NAIL W/ FLAGGING
93	2961.90	6795.70	10/28/08	FOUND MAG NAIL W/ FLAGGING
94	2888.36	8408.08	10/28/08	FOUND MAG NAIL W/ FLAGGING
2001	2981.58	4796.51	11/19/08	SET MAG NAIL W/ WASHER "OBEC CONTROL"
2002	2987.79	4435.70	11/19/08	SET MAG NAIL W/ WASHER "OBEC CONTROL"
2003	3037.08	4303.80	11/19/08	SET MAG NAIL W/ WASHER "OBEC CONTROL"

SHEET INDEX

- SHEET LAYOUT, SHEET INDEX, REFERENCES, NARRATIVE, CONTROL NETWORK, BASIS OF BEARING, CONTROL NARRATIVE
76. SURVEY

I, BRET N. ELITHORP, STATE THAT THIS SURVEY WAS PREPARED USING HEWLETT-PACKARD PRODUCT #51645a ON CONTINENTAL #JPC4M2 POLYESTER FILM.
Bret Elithorp 3/5/09
BRET N. ELITHORP DATE

REGISTERED PROFESSIONAL LAND SURVEYOR
Bret Elithorp
OREGON JAN. 14, 2003
BRET N. ELITHORP *63148
RENEWAL DATE: DEC. 31, 2009
SIGNED: 3/5/09

REFERENCES

- COMMISSIONER'S JOURNAL VOLUME 2, PAGE 541
- CS 0138, MAP OF PROPOSED A PROPOSED COUNTY ROAD THROUGH R.J. McISSAC'S PROPERTY, BY C.M. HURLBURT
- CS 77040 BY LARRY D. BISHOP, FILED APR. 26, 1977
- CS 80040 BY DANNY L. CRON FILED JUNE 12, 1980
- CS 82058 BY DANNY L. CRON FILED DEC. 2, 1982
- CS 86046 BY WILLIAM J. FROST FILED AUG. 29, 1986
- CS 99108 BY KEVIN DOWD FILED DEC. 6, 1999
- CS 02012 BY JON T. FEIGON FILED MAR. 8, 2002
- DEPENDENT RESURVEY, SUBDIVISION OF SECTION 31, BY DANIEL E. WELLER, U.S. DEPARTMENT OF THE INTERIOR, BUREAU OF LAND MANAGEMENT DATED JULY 18, 2003
- CS 2007-087 BY JAMES M. KLEIN, FILED AUG. 20, 2007
- HOOD RIVER COUNTY SURVEYOR CORNER RESTORATION CARD NO. 648
- HOOD RIVER COUNTY SURVEYOR CORNER RESTORATION CARD NO. 1022

FILE NAME: 108114ret.dgn

OBEC CONSULTING ENGINEERS
Corporate Office: 920 COUNTRY CLUB ROAD, SUITE 100B EUGENE, OREGON 97401-6089, 541-683-6090
2235 MISSION STREET SE, SUITE 100 SALEM, OREGON 97302-1295, 503-589-4100
831 O'HARE PARKWAY MEDFORD, OREGON 97504-4005, 541-774-5591
5005 SW MEADOWS ROAD, SUITE 120 LAKE OSWEGO, OREGON 97035, 503-620-6103
www.obec.com

UNITED STATES FOREST SERVICE
HORIZONTAL CONTROL AND RECOVERY SURVEY
MIDDLE FORK HOOD RIVER BRIDGE DESIGN
RED HILL DRIVE
HOOD RIVER COUNTY
JANUARY 21, 2009
NO SCALE
SHEET 1 OF 6

J. COLTON	OBEC	DESIGNED: B. ELITHORP	PROJ. NO. 108-114
APPROVED BY:	GROUP MANAGER	DRAWN: A. DUPLANT	CHK'D: J. COLTON

SW 1/4 SEC 31 T1N R10E WM

HOOD RIVER COUNTY
SURVEYOR'S OFFICE

SURVEY NO.: 2009 011

FILED: 3-12-09

BY: [Signature]



SCALE 1" = 50'



F-20051864

F-995552

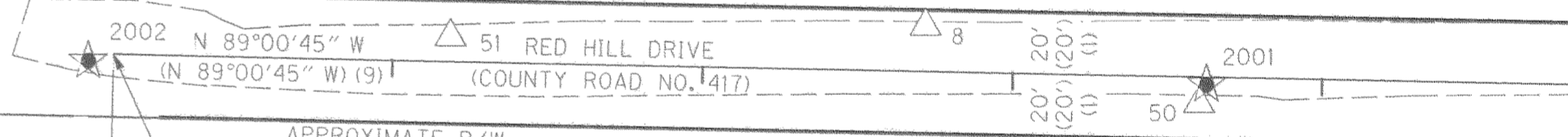
2003

F-20021738

△10

APPROXIMATE LOCATION
1/16TH SECTION LINE

F-800927



39+90.000 PI
(39+90 PI)(2)
N 2989.991
E 4443.924

THIS POINT BEARS NORTH 1,431.76'
AND WEST 3,998.36' FROM THE
SOUTHEAST CORNER OF SEC 31, T1N, R10E, WM
(POINT 1000)

F-800929

SEE SHEET 3

LEGEND

- (XX) RECORD DATA PER REFERENCE LIST ON SHEET 1
- △ FOUND NETWORK POINT
- ★ SET GPS POINT
- RIGHT-OF-WAY (APPROXIMATE)
- PROPERTY LINE
- - - EDGE OF PAVEMENT



REGISTERED
PROFESSIONAL
LAND SURVEYOR

B. N. Elithorp
OREGON
JAN. 14, 2003
BRET N. ELITHORP
#63148

RENEWAL DATE: DEC. 31, 2009
SIGNED: 3/5/09

FILE NAME: 108114ret.dgn



Corporate Offices: 920 COUNTRY CLUB ROAD, SUITE 100B EUGENE, OREGON 97401-6089, 541-683-6090
2235 MISSION STREET SE, SUITE 100 SALEM, OREGON 97302-1295, 503-589-4100
831 OHARE PARKWAY MEDFORD, OREGON 97504-4005, 541-774-5591
5005 SW MEADOWS ROAD, SUITE 120 LAKE OSWEGO, OREGON 97035, 503-620-6103

UNITED STATES FOREST SERVICE
HORIZONTAL CONTROL AND RECOVERY SURVEY
MIDDLE FORK HOOD RIVER BRIDGE DESIGN
RED HILL DRIVE
HOOD RIVER COUNTY

JANUARY 21, 2009
SCALE 1"=50'
SHEET 2 OF 6

DESIGNED: B. ELITHORP

PROJ. NO. 108-114

DRAWN: A. DUPLANT

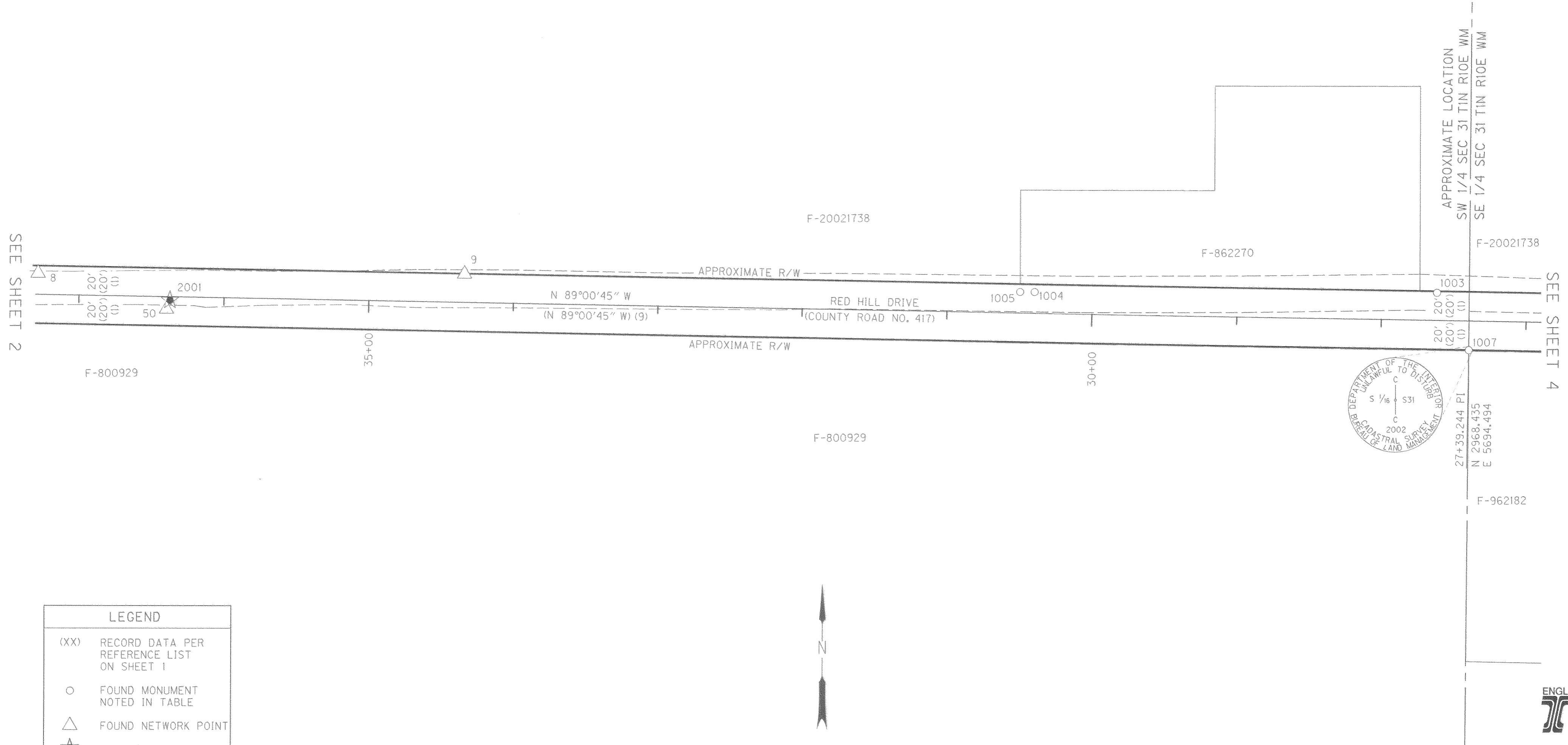
CHK'D: J. COLTON

CS 2009 011-2

SW 1/4 SEC 31 T1N R10E WM
SE 1/4 SEC 31 T1N R10E WM

HOOD RIVER COUNTY
SURVEYOR'S OFFICE

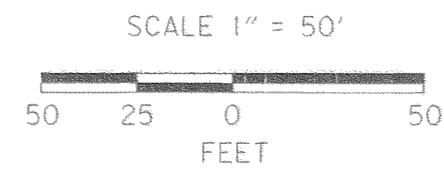
SURVEY NO.: 2009 011
FILED: 3-12-09
BY: *[Signature]*



SEE SHEET 2

SEE SHEET 4

LEGEND	
(XX)	RECORD DATA PER REFERENCE LIST ON SHEET 1
○	FOUND MONUMENT NOTED IN TABLE
△	FOUND NETWORK POINT
★	SET GPS POINT
—	RIGHT-OF-WAY (APPROXIMATE)
—	PROPERTY LINE
---	EDGE OF PAVEMENT



DN = DOWN
FD = FOUND
CS = COUNTY SURVEY

RECOVERED MONUMENT LIST

PT ID	NORTHING	EASTING	STATION	OFFSET	DATE	DESCRIPTION & REFERENCE DOCUMENTS
1003	2987.81	5672.15	27+61.92	18.99' RT	11/19/08	FD RAILROAD SPIKE, DN 0.25', CS 82058
1004	2988.32	5394.37	30+39.66	14.71' RT	11/19/08	FD RAILROAD SPIKE, DN 0.25', CS 82058
1005	2988.33	5384.37	30+49.67	14.54' RT	11/19/08	FD SPIKE W/BRASS DISK "WS FROST LS 1971", CS 86046
1007	2948.44	5694.15	27+39.24	20.00' LT	11/19/08	FD 3-1/4" BRASS DISK, UP 0.4', CS 037067

REGISTERED PROFESSIONAL LAND SURVEYOR

Bret N. Elithorp
OREGON
JAN. 14, 2003
BRET N. ELITHORP
#63148

RENEWAL DATE: DEC. 31, 2009
SIGNED: 3/5/09

OBEC CONSULTING ENGINEERS
www.obec.com
Corporate Office: 920 COUNTRY CLUB ROAD, SUITE 100B EUGENE, OREGON 97401-6089, 541-683-6090
2235 MISSION STREET SE, SUITE 100 SALEM, OREGON 97302-1295, 503-589-4100
831 O'HARE PARKWAY MEDFORD, OREGON 97504-4005, 541-774-5591
5005 SW MEADOWS ROAD, SUITE 120 LAKE OSWEGO, OREGON 97035, 503-620-6103

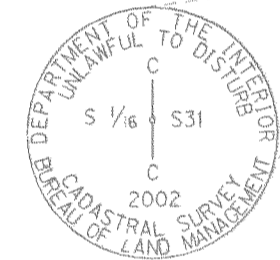
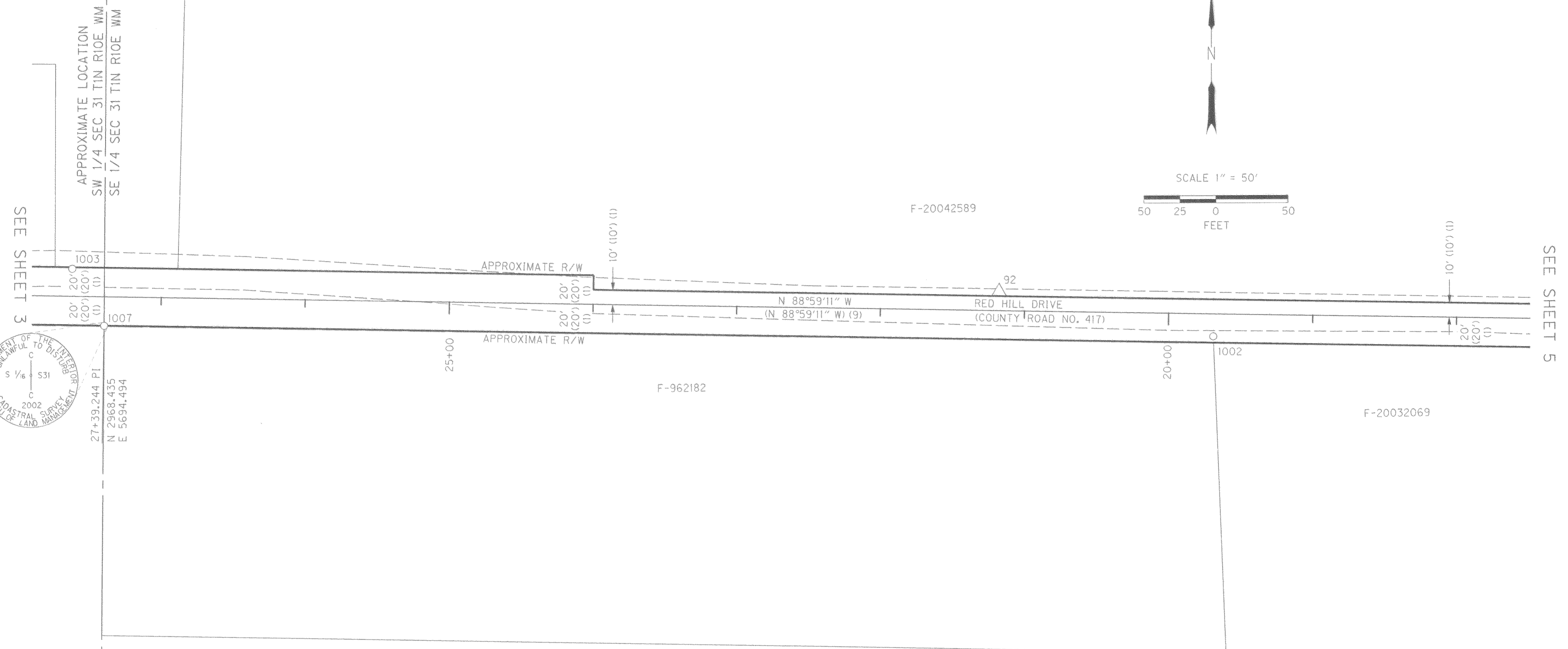
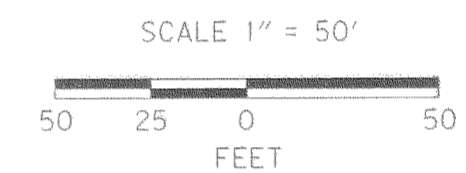
UNITED STATES FOREST SERVICE
HORIZONTAL CONTROL AND RECOVERY SURVEY
MIDDLE FORK HOOD RIVER BRIDGE DESIGN
RED HILL DRIVE
HOOD RIVER COUNTY
JANUARY 21, 2009
SCALE 1"=50'
SHEET 3 OF 6
DESIGNED: B. ELITHORP
DRAWN: A. DUPLANT
CHK'D: J. COLTON
PROJ. NO. 108-114

CS 2009 011-3

SW 1/4 SEC 31 T1N R10E WM
SE 1/4 SEC 31 T1N R10E WM

HOOD RIVER COUNTY
SURVEYOR'S OFFICE

SURVEY NO.: 2009 011
FILED: 3-12-09
BY: *[Signature]*



LEGEND	
(XX)	RECORD DATA PER REFERENCE LIST ON SHEET 1
○	FOUND MONUMENT NOTED IN TABLE
△	FOUND NETWORK POINT
—	RIGHT-OF-WAY (APPROXIMATE)
---	PROPERTY LINE
- - -	EDGE OF PAVEMENT

RECOVERED MONUMENT LIST

PT ID	NORTHING	EASTING	STATION	OFFSET	DATE	DESCRIPTION & REFERENCE DOCUMENTS
1002	2939.25	6464.53	19+68.81	15.56' LT	11/19/08	FD 3/4" ID IRON PIPE, BENT, TIED AT SPIN POINT, UP 0.3', FD IN CS 80040 & CS 2007-087

DN = DOWN
FD = FOUND
CS = COUNTY SURVEY

REGISTERED PROFESSIONAL LAND SURVEYOR
Bret N. Elithorp
BRET N. ELITHORP
#63149
RENEWAL DATE: DEC. 31, 2009
SIGNED: 3/5/09

OBEC CONSULTING ENGINEERS
www.obec.com
Corporate Office: 920 COUNTRY CLUB ROAD, SUITE 100B EUGENE, OREGON 97401-6089, 541-683-6090
2235 MISSION STREET SE, SUITE 100 SALEM, OREGON 97302-1295, 503-589-4100
831 O'HARE PARKWAY MEDFORD, OREGON 97504-4005, 541-774-5591
5005 SW MEADOWS ROAD, SUITE 120 LAKE OSWEGO, OREGON 97035, 503-620-6103

ENGLISH

UNITED STATES FOREST SERVICE
HORIZONTAL CONTROL AND RECOVERY SURVEY
MIDDLE FORK HOOD RIVER BRIDGE DESIGN
RED HILL DRIVE
HOOD RIVER COUNTY

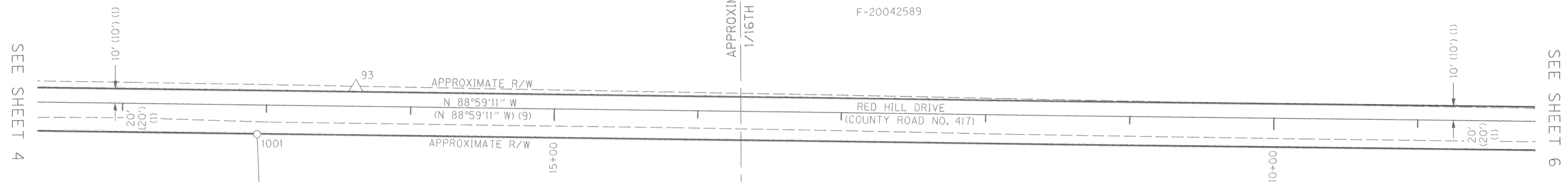
JANUARY 21, 2009
SCALE 1"=50'
SHEET 4 OF 6

DESIGNED: B. ELITHORP
DRAWN: A. DUPLANT
CHK'D: J. COLTON
PROJ. NO. 108-114

CS 2009 011-4

SE 1/4 SEC 31 T1N R10E WM

HOOD RIVER COUNTY
SURVEYOR'S OFFICE
SURVEY NO.: 2009 011
FILED: 3-13-09
BY: *[Signature]*



SEE SHEET 4

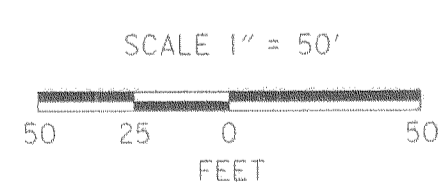
SEE SHEET 6

F-20032069

F-20042589

F-20042589

LEGEND	
(XX)	RECORD DATA PER REFERENCE LIST ON SHEET 1
○	FOUND MONUMENT NOTED IN TABLE
△	FOUND NETWORK POINT
—	RIGHT-OF-WAY (APPROXIMATE)
—	PROPERTY LINE
---	EDGE OF PAVEMENT



FD = FOUND
CS = COUNTY SURVEY
YPC = YELLOW PLASTIC CAP

RECOVERED MONUMENT LIST

PT ID	NORTHING	EASTING	STATION	OFFSET	DATE	DESCRIPTION & REFERENCE DOCUMENTS
1001	2929.91	6726.94	17+06.27	20.25' LT	11/19/08	FD 5/8" IRON ROD W/YPC "KLEIN & ASSOC PLS 59002", FLUSH, CS 2007-087

REGISTERED PROFESSIONAL LAND SURVEYOR
Bret N. Elithorp
BRET N. ELITHORP
#63148
RENEWAL DATE: DEC. 31, 2009
SIGNED: 3/5/09

OBEC CONSULTING ENGINEERS
Corporate Offices: 920 COUNTRY CLUB ROAD, SUITE 100B EUGENE, OREGON 97401-6089, 541-683-6090
2235 MISSION STREET SE, SUITE 100 SALEM, OREGON 97302-1295, 503-589-4100
831 O'HARE PARKWAY MEDFORD, OREGON 97504-4005, 541-774-5591
5005 SW MEADOWS ROAD, SUITE 120 LAKE OSWEGO, OREGON 97035, 503-620-6103
www.obec.com

UNITED STATES FOREST SERVICE
HORIZONTAL CONTROL AND RECOVERY SURVEY
MIDDLE FORK HOOD RIVER BRIDGE DESIGN
RED HILL DRIVE
HOOD RIVER COUNTY
JANUARY 21, 2009
SCALE 1"=50'
SHEET 5 OF 6
DESIGNED: B. ELITHORP
DRAWN: A. DUPLANT
CHK'D: J. COLTON
PROJ. NO. 108-114

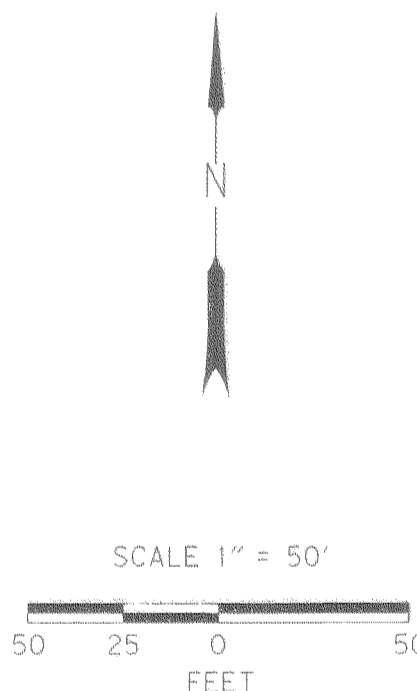
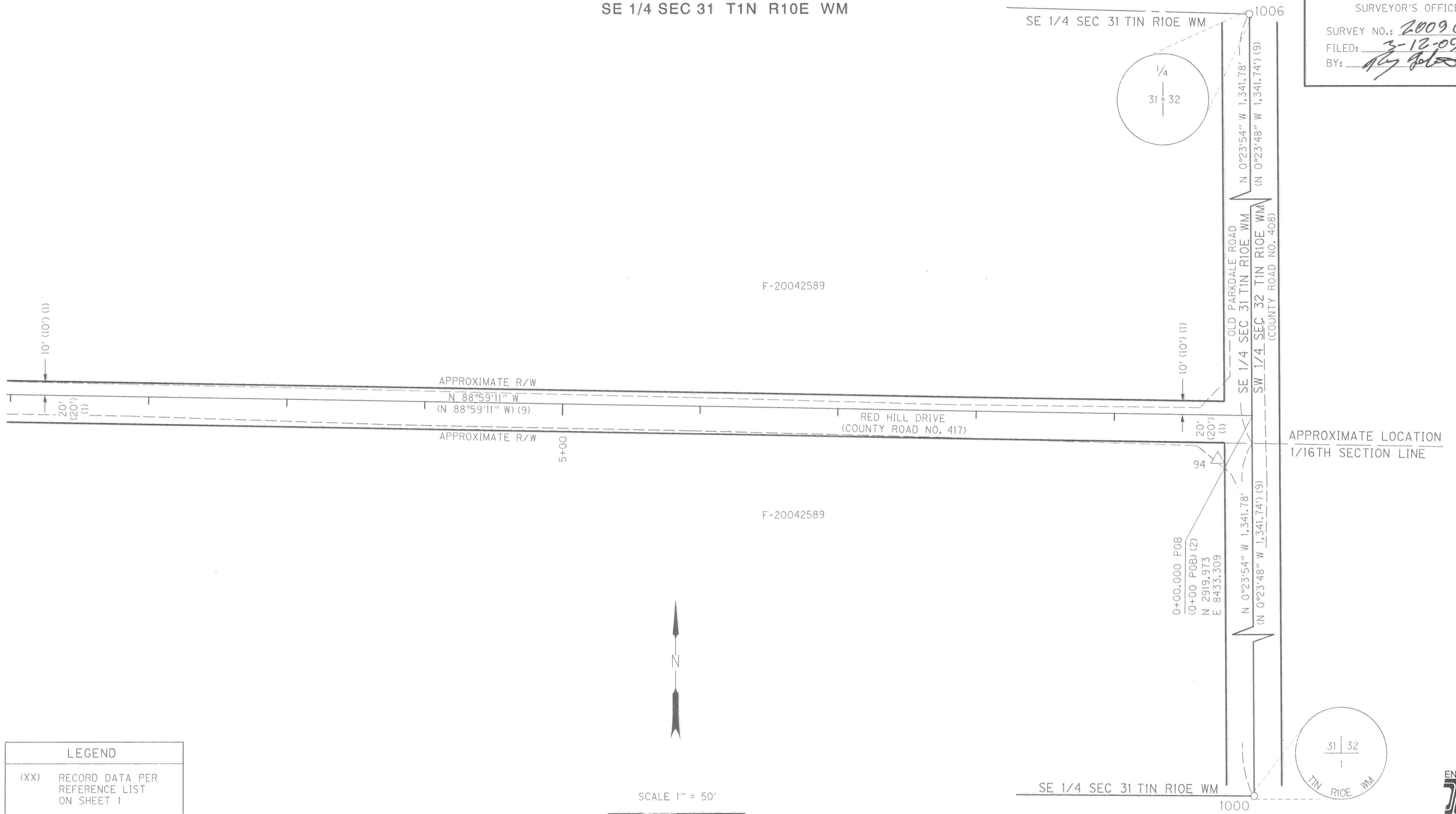
SE 1/4 SEC 31 T1N R10E WM

SE 1/4 SEC 31 TIN R10E WM

HOOD RIVER COUNTY
SURVEYOR'S OFFICE

SURVEY NO.: 2009 011
FILED: 3-12-09
BY: *[Signature]*

SEE SHEET 5



LEGEND	
(XX)	RECORD DATA PER REFERENCE LIST ON SHEET 1
○	FOUND MONUMENT NOTED IN TABLE
△	FOUND NETWORK POINT
—	RIGHT-OF-WAY (APPROXIMATE)
—	PROPERTY LINE
---	EDGE OF PAVEMENT

RECOVERED MONUMENT LIST

PT ID	NORTHING	EASTING	STATION	OFFSET	DATE	DESCRIPTION & REFERENCE DOCUMENTS
1000	1558.23	8442.28	N/A	N/A	11/19/08	FD 3" BRASS DISK IN MONUMENT BOX, DN 0.4', HRCS CORNER RESTORATION CARD NO. 648
1006	4241.73	8423.63	N/A	N/A	11/19/08	FD 3" BRASS DISK, DN 0.25', HRCS CORNER RESTORATION CARD NO. 1022

FD = FOUND
DN = DOWN
HRCS = HOOD RIVER COUNTY SURVEYOR

REGISTERED PROFESSIONAL LAND SURVEYOR
Bret N. Elithorp
BRET N. ELITHORP
#63148

RENEWAL DATE: DEC. 31, 2009
SIGNED: 3/5/09

OBEC CONSULTING ENGINEERS
Corporate Offices: 920 COUNTRY CLUB ROAD, SUITE 100B EUGENE, OREGON 97401-6089, 541-683-6090
2235 MISSION STREET SE, SUITE 100 SALEM, OREGON 97302-1295, 503-589-4100
831 O'HARE PARKWAY MEDFORD, OREGON 97504-4005, 541-774-5591
5005 SW MEADOWS ROAD, SUITE 120 LAKE OSWEGO, OREGON 97035, 503-620-6103

UNITED STATES FOREST SERVICE
HORIZONTAL CONTROL AND RECOVERY SURVEY
MIDDLE FORK HOOD RIVER BRIDGE DESIGN
RED HILL DRIVE
HOOD RIVER COUNTY

JANUARY 21, 2009
SCALE 1"=50'
SHEET 6 OF 6

DESIGNED: B. ELITHORP
DRAWN: A. DUPLANT
CHK'D: J. COLTON

PROJ. NO. 108-114