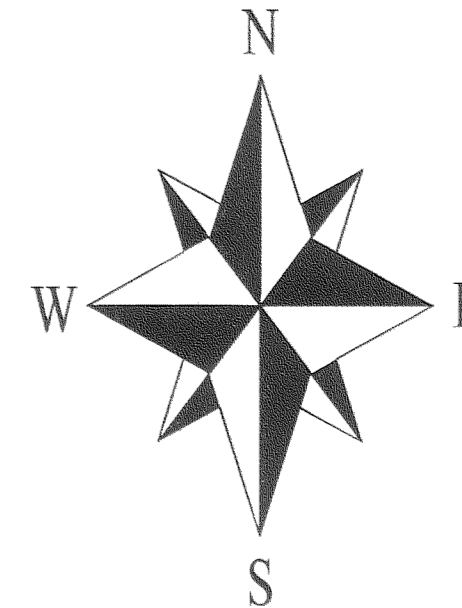
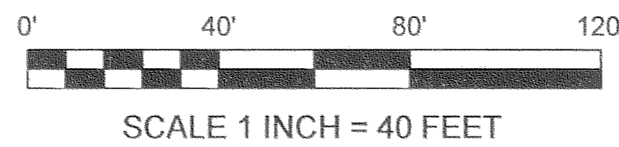


PROPERTY BOUNDARY SURVEY FOR ERIK KERR
 PORTION OF SPANGLER'S SUBDIVISION OF BLOCK 2 OF PARKHURST.
 LOCATED IN THE SE 1/4 OF THE NW 1/4 OF SECTION 36, TOWNSHIP 3 NORTH, RANGE 10 EAST W.M.
 CITY OF HOOD RIVER, HOOD RIVER COUNTY, OREGON.

TAX LOT 1700, 3N-10E-36BD
 SEPTEMBER 4, 2008



HOOD RIVER COUNTY
 SURVEYOR'S OFFICE
 Survey No: 2008 084
 Filed Date: 12-17-08
 By: Randy Jelke

SYMBOL LEGEND:

- SET 5/8" X 30" IRON ROD WITH ORANGE PLASTIC CAP INSCRIBED "CROSS P.L.S. 60051".
 - ⊙ FOUND 5/8" X 30" IRON ROD WITH ORANGE PLASTIC CAP INSCRIBED "CROSS P.L.S. 60051" FROM C.S.#2008072.
 - FOUND 1/2" IRON PIPE MONUMENT, OR AS NOTED.
 - ⊙ FOUND P.L.S. 2753 5/8" IRON ROD WITH YELLOW PLASTIC CAP FROM C.S.#2000039.
 - CALCULATED CORNER, NOT FOUND OR SET
- (50.00') ORIGINAL PLAT DISTANCE
 9.2' OFFSET DISTANCE

HOOD RIVER PROPER
 SUBDIVISION

BASIS OF BEARINGS:
 PLAT OF SPANGLER'S SUBDIVISION.

NARRATIVE:

THE PURPOSE OF THIS SURVEY IS TO VERIFY THE PROPERTY BOUNDARY OF TAX LOT 1700 OF HOOD RIVER COUNTY ASSESSORS MAP 03N-10E-36BD. TAX LOT 1700 IS DESCRIBED BY WARRANTY DEED DOCUMENT No.2008-01284 AS LOTS 10 & 11 OF SPANGLER'S SUBDIVISION OF BLOCK 2 OF PARKHURST.

DURING MY RECENT SURVEY C.S.#2008072, DATED AUGUST 25, 2008 I FOUND WHAT APPEAR TO BE ORIGINAL MONUMENTS FROM SPANGLER'S SUBDIVISION AT THE SOUTHEAST AND NORTHWEST CORNERS. FROM THESE MONUMENTS I CALCULATED THE MISSING NORTHEAST CORNER BY INTERSECTING THE ORIGINAL SUBDIVISION DISTANCES. I FOUND WHAT APPEARS TO BE AN ORIGINAL MONUMENT AT THE SOUTHWEST CORNER OF SPANGLER'S SUBDIVISION, WHICH I HELD FOR LINE FROM THE MONUMENT FOUND AT THE SOUTHWEST CORNER OF SPANGLER'S SUBDIVISION AND APPLIED THE ORIGINAL RIGHT OF WAY WIDTH TO ESTABLISH THE SOUTHWEST CORNER OF SPANGLER'S SUBDIVISION. I ALSO FOUND WHAT APPEAR TO BE ORIGINAL MONUMENTS AT THE SOUTHWEST CORNER OF LOT 8 & THE SOUTHWEST CORNER OF LOT 6. FROM THIS ORIGINAL MONUMENTATION I WAS ABLE TO RE-ESTABLISH SPANGLER'S SUBDIVISION OF BLOCK 2 OF PARKHURST. I ALSO FOUND WHAT APPEAR TO BE ORIGINAL MONUMENTS AT THE SOUTHWEST CORNER OF LOT 11 & THE NORTHWEST CORNER OF LOT 10. THIS CHANGED THE INTERIOR CONFIGURATION OF THE BLOCK SLIGHTLY FROM WHAT IS SHOWN ON C.S.#2008072.

C.S.#2000039 IS THE ONLY OTHER SURVEY OF RECORD CONDUCTED IN SPANGLER'S SUBDIVISION. IT IS A PARTITION AND CREATED TAX LOTS 1200 & 1201. THIS SURVEY DID NOT FIND AND USE THE ORIGINAL MONUMENTATION I FOUND AT THE NORTHWEST CORNER OF SPANGLER'S SUBDIVISION, THE SOUTHWEST CORNER OF BLOCK 3 OF PARKHURST AND THE SOUTHWEST CORNERS OF LOTS 8 AND 6, AND RESULTED IN THE MONUMENTS I FOUND FROM C.S.#2000039 AT CORNER POINTS 2, 3 & 4, BEING APPROXIMATELY 1 FOOT EAST OF THE CORNERS I CALCULATED. I SHOW THE MONUMENTS AS REFERENCES TO THE CALCULATED CORNERS AND DID NOT SET NEW MONUMENTS AT THESE CORNERS. DISTANCES TO CORNER POINTS 2, 3 & 4 ARE SHOWN TO THE CALCULATED CORNERS. I ACCEPTED THE LOCATION OF THE MONUMENTS SET FOR C.S.#2000039 ON THE EAST LINE OF SPANGLER'S SUBDIVISION, THE MONUMENT FOUND AT THE SOUTHWEST CORNER OF LOT 11 (CORNER POINT 6), WAS ALSO ACCEPTED AS IT FALLS ONLY 0.30' SOUTHWEST FROM THE CALCULATED CORNER.

THE OLD GARAGE ON LOT 12 IS 0.1 FEET SOUTH OF THE SOUTH LINE OF LOT 11.

CORNER NOTES:

1. 1/2" IRON PIPE FOUND BENT AT THE SOUTHWEST CORNER OF LOT 6, TIED AT BEND AT GROUND.
2. P.L.S. 2753 5/8" IRON ROD WITH YELLOW PLASTIC CAP FROM C.S.#2000039 FOUND N 77°09' E, 0.98' FROM THE CALCULATED CORNER. I HELD THE CALCULATED CORNER WITH THE P.L.S. 2753 MONUMENT BEING SHOWN AS A REFERENCE TO THE CALCULATED CORNER.
3. P.L.S. 2753 5/8" IRON ROD WITH YELLOW PLASTIC CAP FROM C.S.#2000039 FOUND N 72°15' E, 1.01' FROM THE CALCULATED CORNER. I HELD THE CALCULATED CORNER WITH THE P.L.S. 2753 MONUMENT BEING SHOWN AS A REFERENCE TO THE CALCULATED CORNER.
4. P.L.S. 2753 5/8" IRON ROD WITH YELLOW PLASTIC CAP FROM C.S.#2000039 FOUND 0.80' EAST OF THE EAST LINE OF TAX LOT 1500. HELD FOR EAST - WEST LINE AND EXTENDED TO THE EAST LINE OF TAX LOT 1500. I HELD THE CALCULATED CORNER WITH THE P.L.S. 2753 MONUMENT BEING SHOWN AS A REFERENCE TO THE CALCULATED CORNER.
5. ORIGINAL NE SUBDIVISION CORNER CALCULATED BY HOLDING THE ORIGINAL PLAT DISTANCES FROM THE ORIGINAL MONUMENTS FOUND AT THE NW AND SE SUBDIVISION CORNERS.
6. P.L.S. 2753 5/8" IRON ROD WITH YELLOW PLASTIC CAP FROM C.S.#2000039 FOUND 0.30' SOUTHWEST FROM THE CALCULATED SOUTHWEST CORNER OF LOT 11. I HELD THE MONUMENT AS THE CORNER. THE NORTHEAST CORNER OF THE SHED CONSTRUCTED ON A TEMPORARY FOUNDATION NEAR THIS CORNER IS ON THE SOUTH LINE OF LOT 11.

REFERENCES:

- HOOD RIVER COUNTY DEED DOCUMENTS:
 WARRANTY DEED, RECORDED JUNE 30, 2008, AS DOCUMENT No.2008-02580. (TAX LOT 1500).
 STATUTORY DEED, RECORDED APRIL 3, 2008, AS DOCUMENT No.2008-01284. (TAX LOT 1700).
 WARRANTY DEED, RECORDED SEPTEMBER 7, 2004, AS DOCUMENT No.20044161. (TAX LOT 1200).
 WARRANTY DEED, RECORDED DECEMBER 15, 1997, AS MICROFILM No.974147. (TAX LOT 1400).
 WARRANTY DEED, RECORDED AUGUST 7, 1992, AS MICROFILM No.922391. (TAX LOT 1600).
 WARRANTY DEED, RECORDED DECEMBER 2, 1964, AS DEED BOOK 79, PAGE 258.

- SURVEYS FILED WITH HOOD RIVER COUNTY SURVEYORS OFFICE:
 C.S.#2008072, FILED SEPTEMBER 11, 2008.
 PLAT OF PARKHURST SUBDIVISION, DATED MARCH 20, 1891.
 PLAT OF SPANGLER'S SUBDIVISION, DATED OCTOBER 16, 1900.
 C.S.#2001035, FILED JUNE 27, 2001.
 C.S.#2000039, FILED MAY 2, 2000. (PARTITION PLAT 200014P).
 C.S.#89088, FILED OCTOBER 24, 1989.
 C.S.#85046, FILED JULY 12, 1985.

HOOD RIVER COUNTY ASSESSORS MAP 3N-10E-36BD, REVISED JUNE 15, 2005.

PROJECT NUMBER: 2008030.
 DATE OF SURVEY: SEPTEMBER 4, 2008.
 DATE OF DRAWING: DECEMBER 9, 2008.
 HOOD RIVER COUNTY ASSESSORS MAP: 03N-10E-36BD.

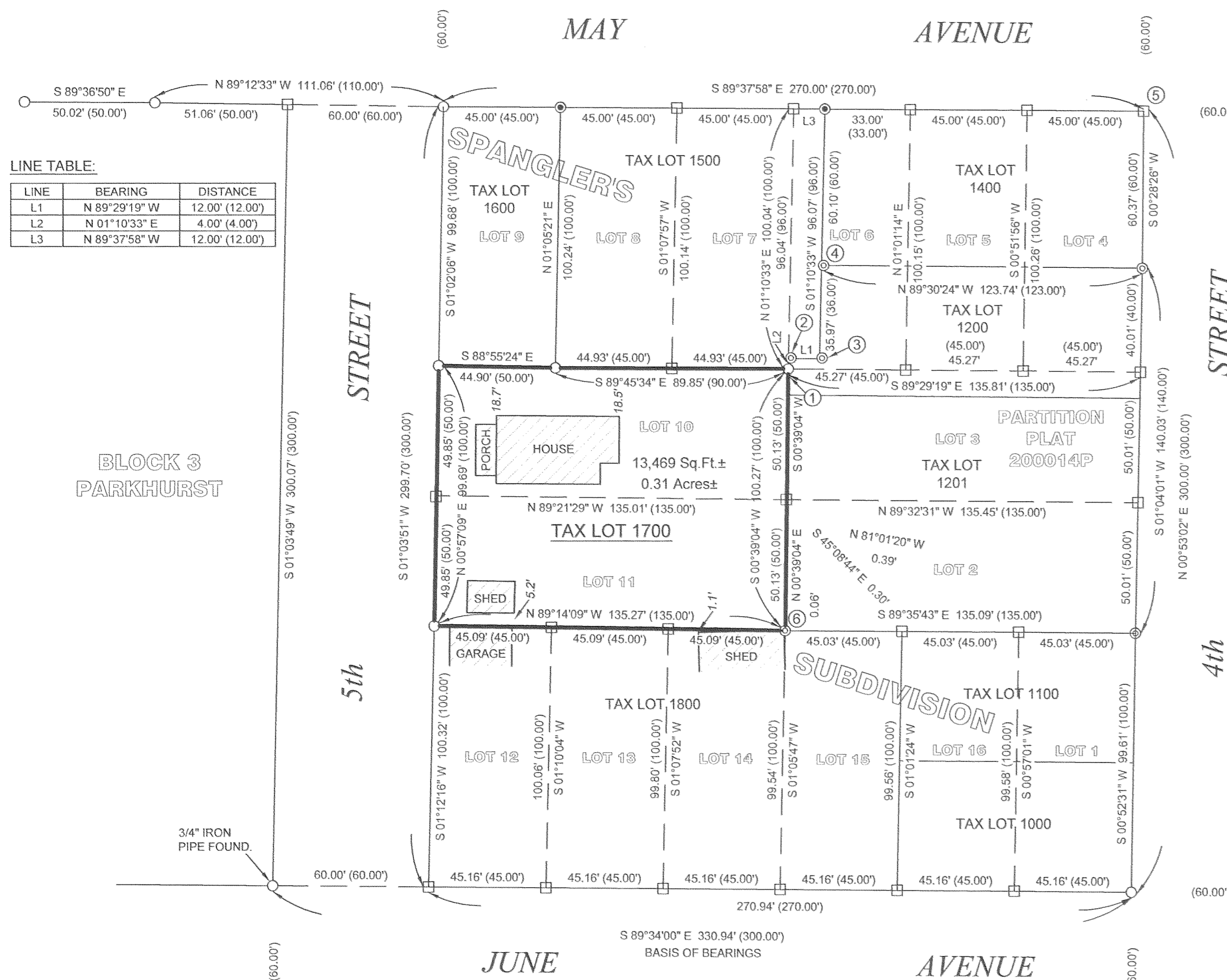
REGISTERED
 PROFESSIONAL
 LAND SURVEYOR

Bradley J. Cross
 OREGON
 JANUARY 15, 2002
 BRADLEY J. CROSS
 60051

RENEWAL DATE: 12/31/2009

**COLUMBIA RIVER
 SURVEYING
 & MAPPING**

1767 12th STREET, #191
 HOOD RIVER, OREGON, 97031
 PHONE: 541-386-9002
 EMAIL: INFO@COLUMBIASURVEYING.COM



LINE TABLE:

LINE	BEARING	DISTANCE
L1	N 89°29'19" W	12.00' (12.00')
L2	N 01°10'33" E	4.00' (4.00')
L3	N 89°37'58" W	12.00' (12.00')