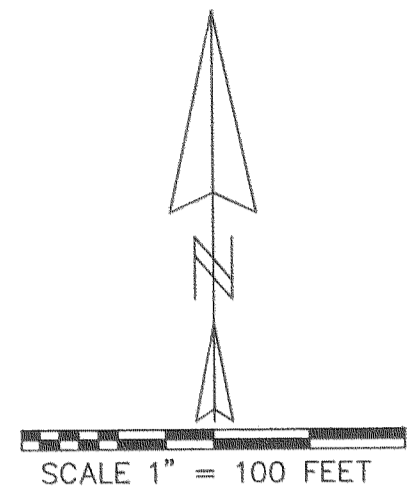
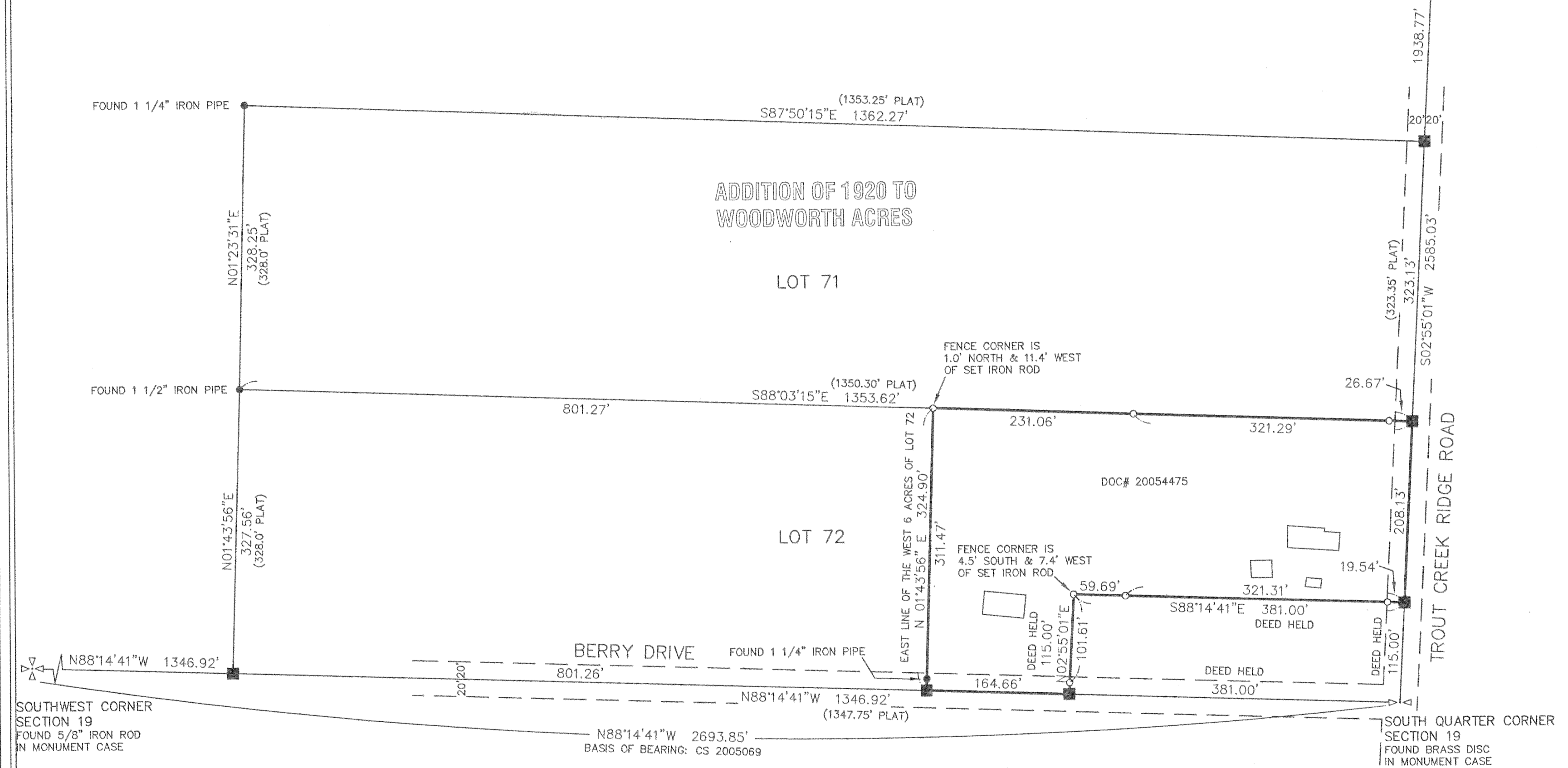


HOOD RIVER COUNTY  
 SURVEYOR'S OFFICE  
 SURVEY NO. **CS 2008 075**  
 FILED DATE: **11.3.08**  
 BY: *Kevin Dowd*

REGISTERED  
 PROFESSIONAL  
 LAND SURVEYOR  
*Kevin Dowd*  
 OREGON  
 JULY 26, 1989  
 KEVIN DOWD  
 2393  
 RENEW DATE: 12-31-09  
 OCTOBER 4, 2008



CENTER QUARTER CORNER **19**  
 SECTION 19  
 CALCULATED POSITION  
 AS PER CS 2006116



**NARRATIVE**

THE PURPOSE OF THIS SURVEY IS TO ESTABLISH THE BOUNDARIES OF THAT TRACT OF LAND DESCRIBED IN DEED RECORDED AS DOC# 20054475. THE TRACT IS A PORTION OF LOT 72, 1920 ADDITION TO WOODWORTH ACRES. THE BRASS DISC FOUND AT THE SOUTH QUARTER CORNER WAS ACCEPTED FOR THE SOUTH EAST CORNER OF LOT 72. THE SOUTH WEST CORNER OF LOT 72 WAS ESTABLISHED AT MIDPOINT BETWEEN MONUMENTS FOUND AT SAID SOUTH QUARTER CORNER AND THE SOUTH WEST SECTION CORNER AS PER PLAT. A FOUND IRON PIPE WAS ACCEPTED TO ESTABLISH THE NORTH WEST CORNER OF LOT 72. THE NORTH EAST CORNER OF LOT 72 WAS ESTABLISHED BY PRORATION BETWEEN THE BRASS DISC FOUND AT THE SOUTH QUARTER CORNER AND THE CALCULATED POSITION OF THE CENTER QUARTER CORNER. DEED CALLS WERE HELD TO ESTABLISH THE EXCEPTED PARCEL IN THE SOUTH EAST CORNER OF LOT 72. A LINE PARALLEL WITH THE WEST LINE OF LOT 72 AND THROUGH A FOUND IRON PIPE WAS CALCULATED TO ESTABLISH THE WEST TRACT LINE. SAID LINES INTERSECTION WITH THE NORTH AND SOUTH LOT LINES ESTABLISHED THE NORTH WEST AND SOUTH WEST TRACT CORNERS. THE DEED EXCEPTS OUT THE WEST 6 ACRES OF LOT 72. AREA CALCULATIONS CONFIRM THAT THE WEST TRACT LINE AS ESTABLISHED YIELDS 6 ACRES.

MONUMENTS WERE SET AUGUST 22-23, 2008

**RECORD OF SURVEY**

A PORTION OF LOT 72  
 ADDITION OF 1920 TO WOODWORTH ACRES  
 LOCATED IN THE SOUTH WEST QUARTER  
 OF SECTION 19  
 T1 NORTH, R10 EAST, W.M.  
 HOOD RIVER COUNTY, OREGON

FOR: JIMMIE LEWIS

WYEAST SURVEYS  
 KEVIN DOWD  
 4399 WOODWORTH DRIVE  
 MT HOOD, OR 97041  
 (541) 362-6065

**LEGEND**

- SET 5/8" X 30" IRON ROD WITH YELLOW PLASTIC CAP MARKED "WYEAST LS 2393"
- FOUND MONUMENT AS NOTED
- CALCULATED POSITION