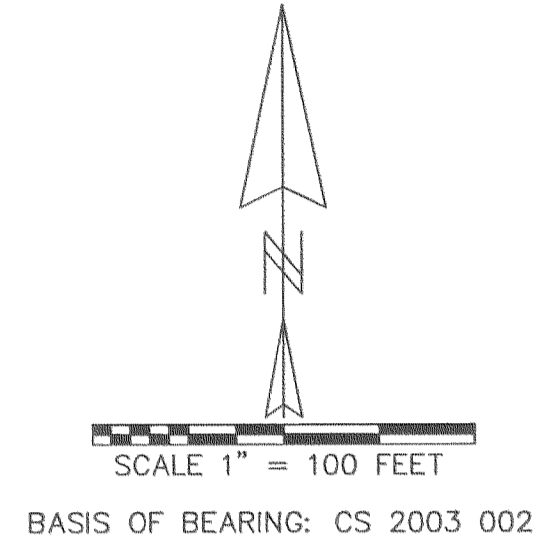
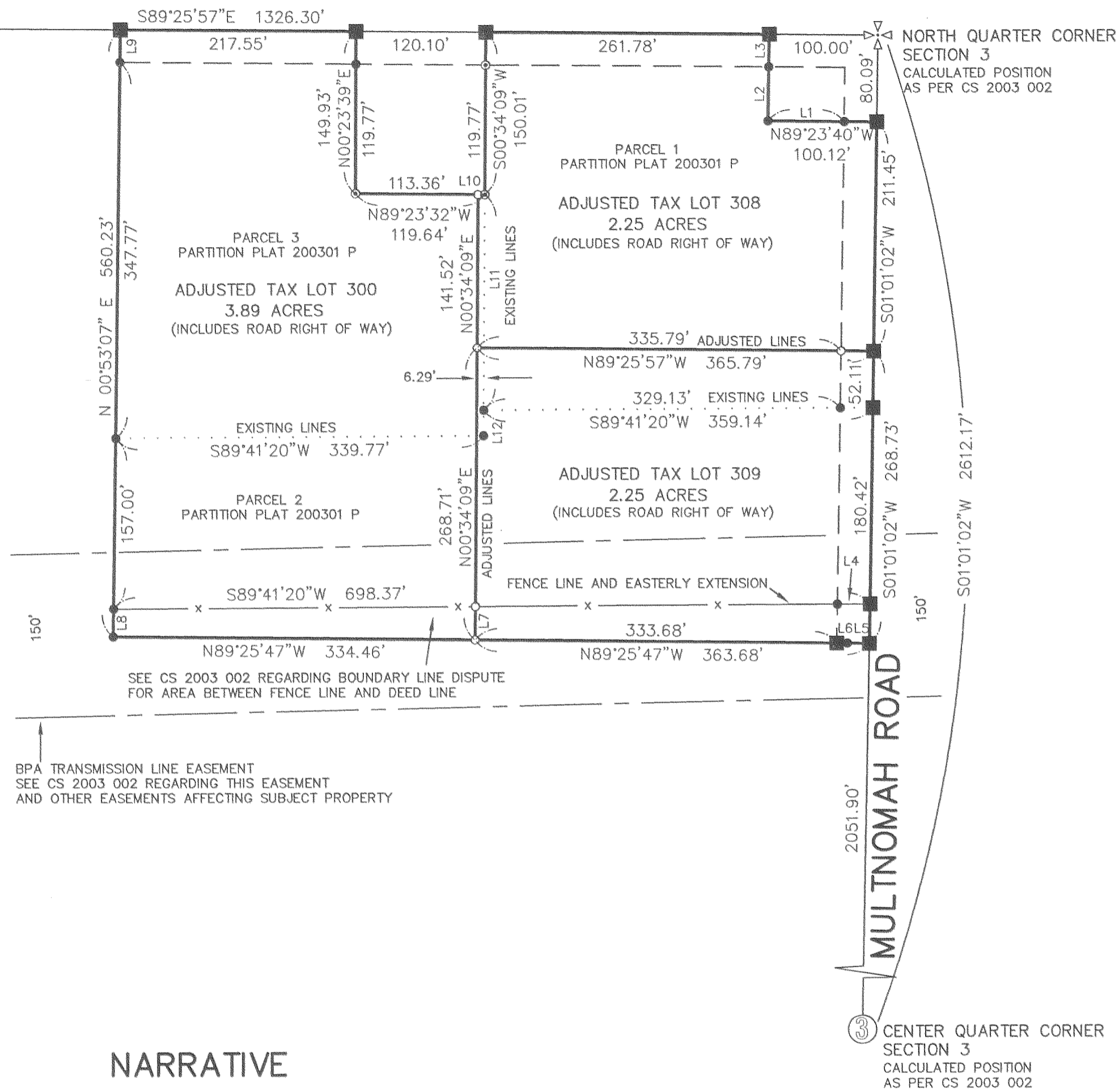


W 1/16 CORNER
SECTION 3
CALCULATED POSITION
AS PER CS 2003 002

BELMONT DRIVE

626.87'

HOOD RIVER COUNTY
SURVEYOR'S OFFICE
SURVEY NO. **2008 062**
FILED DATE: **9-4-08**
BY: *[Signature]*



REGISTERED
PROFESSIONAL
LAND SURVEYOR
Kevin Dowd
OREGON
JULY 26, 1989
KEVIN DOWD
2393
RENEW DATE: 12-31-09
JULY 30, 2008

LINE TABLE		
LINE	LENGTH	BEARING
L1	70.12	N89°23'40"W
L2	50.00	N00°55'40"E
L3	30.03	N01°23'52"E
L4	30.01	S89°41'20"W
L5	20.13	N89°25'47"W
L6	9.87	N89°25'47"W
L7	30.59	N00°34'09"E
L8	25.45	N00°53'07"E
L9	30.00	N00°53'07"E
L10	6.29	N89°23'32"W
L11	199.13	S00°34'09"W
L12	23.41	S00°34'09"W

AREA TABLE (INCLUDES ROAD RIGHT OF WAY)

EXISTING TAX LOT 300: 2.50 ACRES
ADJUSTED TAX LOT 300: 3.89 ACRES

EXISTING TAX LOT 308: 2.68 ACRES
ADJUSTED TAX LOT 308: 2.25 ACRES

EXISTING TAX LOT 309: 3.20 ACRES
ADJUSTED TAX LOT 309: 2.25 ACRES

NARRATIVE

THE PURPOSE OF THIS SURVEY IS TO MONUMENT THE ADJUSTED LINES AND TO FILE FOR RECORD A PROPERTY LINE ADJUSTMENT BETWEEN PARCELS 1, 2 AND 3 OF PARTITION PLAT 200301 P. (CS 2003 002) MONUMENTS WERE RECOVERED FROM SAID PLAT TO ESTABLISH THE EXISTING BOUNDARIES. THE ADJUSTED LINES WERE ESTABLISHED AS PER CLIENT INSTRUCTION. ADJUSTED TAX LOTS 308 AND 309 ARE SMALLER IN AREA THAN THE MINIMUM LOT SIZE OF THE RURAL RESIDENTIAL (RR-2.5) ZONE AS PER AN APPROVED VARIANCE.
MONUMENTS WERE SET ON JUNE 24, 2008.

PROPERTY LINE ADJUSTMENT

LOCATED IN THE NORTHWEST QUARTER
OF SECTION 3
T2 NORTH, R10 EAST, W.M.
HOOD RIVER COUNTY, OREGON
FOR: GERALDINE COOPER

LEGEND

- SET 5/8" X 30" IRON ROD WITH YELLOW PLASTIC CAP MARKED "WYEAST LS 2393"
- FOUND 5/8" IRON ROD AS PER CS 2003 002
- ⊙ FOUND 1" IRON PIPE
- CALCULATED POSITION

WYEAST SURVEYS
KEVIN DOWD
4399 WOODWORTH DRIVE
MT HOOD, OR 97041
(541) 352-6065