

LEGEND:

- SET 5/8" X 30" IRON ROD WITH PLASTIC CAP
- FOUND MONUMENT OF RECORD
- ⊙ FOUND SURVEY NAIL
- CALCULATED, NOT FOUND OR SET
- () DEED OR PLAT CALL

REFERENCES:

HOOD RIVER COUNTY SURVEY NO. 77052
 HOOD RIVER COUNTY SURVEY NO. 89063
 HOOD RIVER COUNTY SURVEY NO. 2002081
 HOOD RIVER COUNTY SURVEY NO. 2003091
 HOOD RIVER COUNTY SURVEY NO. 2004039
 HOOD RIVER COUNTY SURVEY NO. 2007045
 HOOD RIVER COUNTY SURVEY NO. 2008046
 HOOD RIVER COUNTY DEED NO. 2003 5703
 HOOD RIVER COUNTY DEED NO. 2005 6004
 HOOD RIVER COUNTY DEED NO. 2006 5160

NARRATIVE:

THE PURPOSE OF THIS SURVEY WAS TO LOCATE THE PROPERTY BOUNDARY OF TAX LOT 8000 AS DESCRIBED BY HOOD RIVER DEEDS MICROFILM #20056004. THE WEST LINE OF OUR SUBJECT PROPERTY WAS RECENTLY SURVEYED BY TENNESON ENGINEERING CORP. MONUMENTATION WAS FOUND AND TIED. BEARINGS AND DISTANCES SHOWN ON MY SURVEY REPRESENT MEASUREMENTS BETWEEN FOUND MONUMENTATION. I SET 5/8" IRON RODS WITH PLASTIC CAPS AT THE NORTHEAST AND EAST CORNERS OF THE BOUNDARY. THE POSITIONS OF THESE CORNERS WERE DETERMINED BY PROPORTIONING BETWEEN FOUND MONUMENTATION.

LOCATION OF SURVEY:

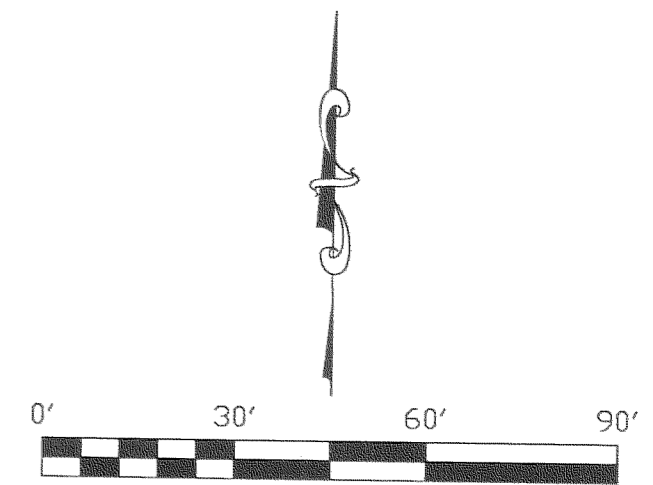
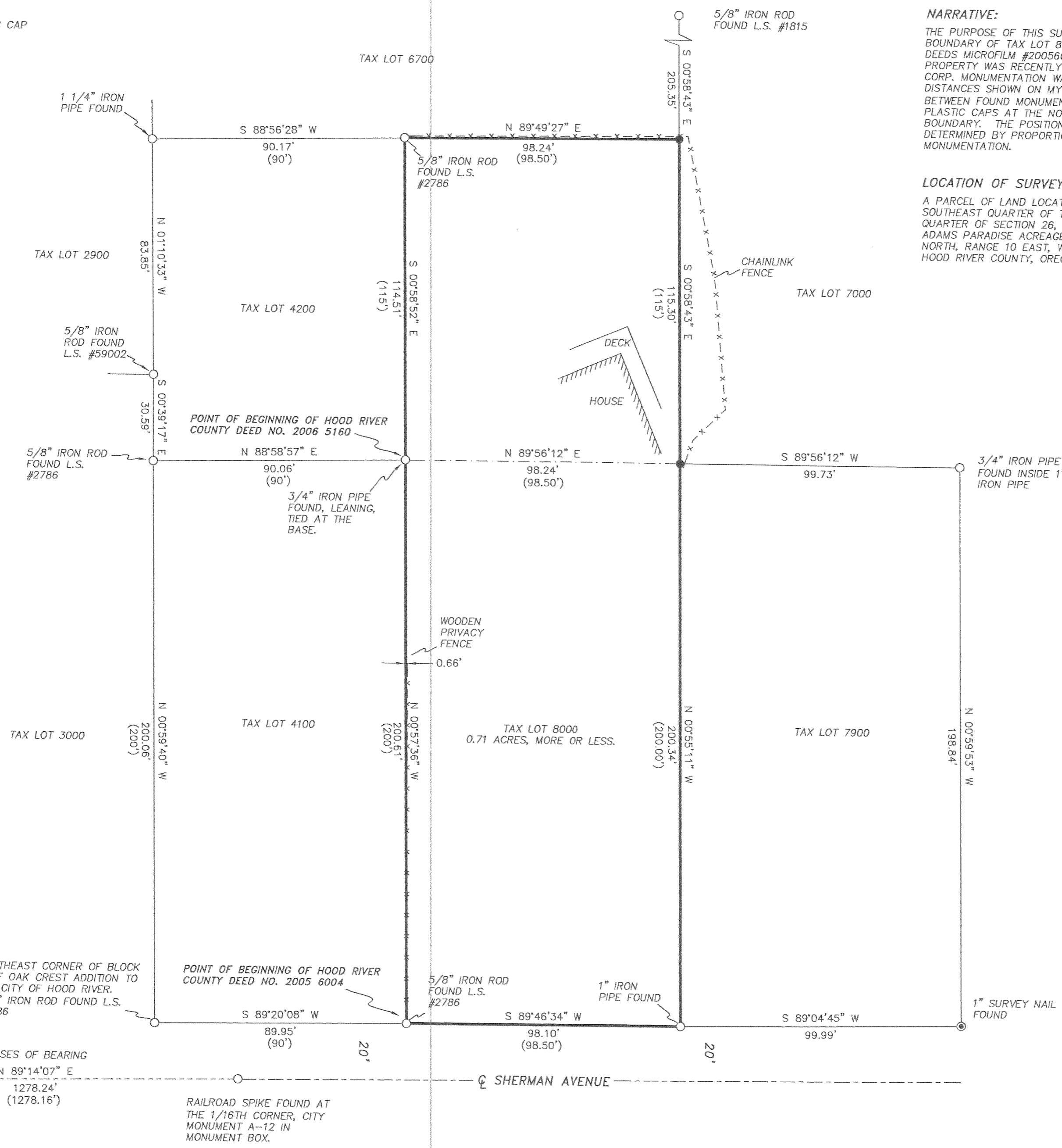
A PARCEL OF LAND LOCATED IN THE SOUTHEAST QUARTER OF THE SOUTHEAST QUARTER OF SECTION 26, WITHIN LOT 1 OF ADAMS PARADISE ACREAGE, TOWNSHIP 3 NORTH, RANGE 10 EAST, WILLAMETTE MERIDIAN, HOOD RIVER COUNTY, OREGON.

HOOD RIVER COUNTY SURVEYOR'S OFFICE

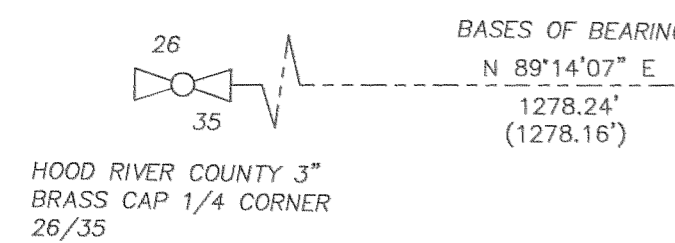
CS# 2008 055

DATE FILED: 8/26/08

BY: *Andy Slat*



BASIS OF BEARING:
HOOD RIVER COUNTY SURVEY #2008 046



REGISTERED PROFESSIONAL LAND SURVEYOR
Erik M. Carlson
 OREGON
 December 30, 2005
 ERIK M. CARLSON
 72306
 Expires: December, 2009

BOUNDARY SURVEY
 for
 ROBERT GILHAM AND CAROLYN TRAINOR-GILHAM

TERRA SURVEYING
 DATE: AUGUST 12, 2008
 SCALE: 1" = 30'
 PROJECT: 208025
 ASSESSOR'S MAP: 3N-10E-26DD TL 8000
 P.O. BOX 617
 HOOD RIVER, OREGON 97031
 PHONE & FAX: (541) 386-4531
 terra@gorge.net

RECEIVED AUG 13 2008

CS 2008 055