

NARRATIVE:

THE PURPOSE OF THIS SURVEY WAS TO PARTITION TAX LOT 904 OF ASSESSOR'S MAP 3N-10E-25CD INTO A TOWNHOUSE PARTITION. THE EXTERIOR BOUNDARIES OF LOT 5 WERE FOUND AND THE DIVISION LINE BETWEEN PARCEL 1 AND 2 WERE MONUMENTED WITH 5/8" IRON RODS. BASIS OF BEARING WAS ESTABLISHED BY FOUND MONUMENTS ON THE SOUTH LINE OF THE PROPERTY BASED ON CS#2004087.

LOCATION OF SURVEY:

BLOCK 4, WAUCOMA ADDITION TO THE CITY OF HOOD RIVER, LOCATED IN THE SOUTHEAST QUARTER OF THE SOUTHWEST QUARTER OF SECTION 25, TOWNSHIP 3 NORTH, RANGE 10 EAST, WILLAMETTE MERIDIAN, CITY OF HOOD RIVER, HOOD RIVER COUNTY, OREGON.

PARCEL LEGAL DESCRIPTION:

LOT 5, BLOCK 4, WAUCOMA ADDITION TO THE CITY OF HOOD RIVER, COUNTY OF HOOD RIVER AND STATE OF OREGON.

HOOD RIVER COUNTY
SURVEYOR'S OFFICE
CS# 2008 049
DATE FILED: 7-1-08
BY: [Signature]

200814P
Instrument received on the 25th day of June, 2008 at 10:15 A.M.
[Signature] - Clerk
Hood River County Director of Records

SURVEYOR'S CERTIFICATE
I, Erik M. Carlson, being first duly sworn, depose and say that I have correctly surveyed and marked with proper monuments the lands represented on this Partition Plat, the boundaries being described as Lot 5, Block 4, Waucoma, in the city of Hood River, County of Hood River and State of Oregon.

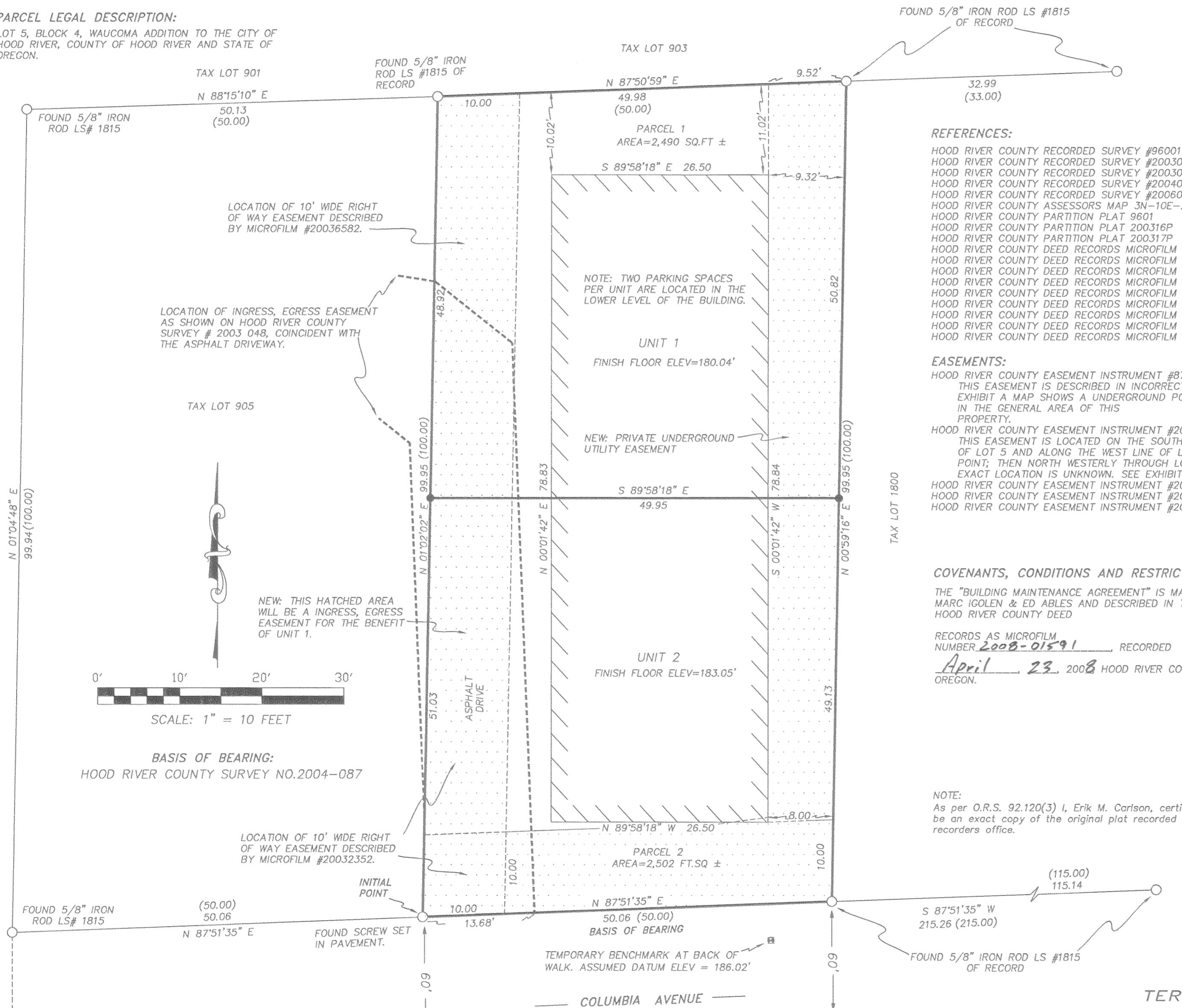
REGISTERED PROFESSIONAL LAND SURVEYOR
[Signature]
OREGON
DECEMBER 30, 2005
ERIK M. CARLSON
72306
EXPIRES: DECEMBER, 2009

ACKNOWLEDGMENTS
We the owner(s) of the land shown herein, hereby declare that this division of land has been made with our free consent and in accordance with our desires.
[Signature] 4/22/08
Marc Igolen, Owner Date
[Signature] 9/22/08
Ed Ables, Owner Date

STATE OF Oregon }
COUNTY OF Hood River } s.s.
Subscribed and sworn to before me on this day of April, 2008
[Signature]
Notary Signature
Nancy J. White
Print Name
NANCY J WHITE
NOTARY PUBLIC - OREGON
COMMISSION NO. 411534
COMMISSION EXPIRES: NOVEMBER 2, 2010

I hereby certify that all taxes and assessments due hereon have been fully paid as required by law.
[Signature]
Hood River County Director of Budget and Finance

I hereby certify this partition was examined and approved as of this 24th day of JUNE, 2008.
[Signature]
Hood River County Surveyor
I hereby certify this partition was examined and approved as of this 28th day of April, 2008.
Planning File Number 2005-08
[Signature]
City of Hood River Planning Director



REFERENCES:
HOOD RIVER COUNTY RECORDED SURVEY #96001
HOOD RIVER COUNTY RECORDED SURVEY #2003047
HOOD RIVER COUNTY RECORDED SURVEY #2003048
HOOD RIVER COUNTY RECORDED SURVEY #2004087
HOOD RIVER COUNTY RECORDED SURVEY #2006038
HOOD RIVER COUNTY ASSESSOR'S MAP 3N-10E-25CD
HOOD RIVER COUNTY PARTITION PLAT 9601
HOOD RIVER COUNTY PARTITION PLAT 200316P
HOOD RIVER COUNTY PARTITION PLAT 200317P
HOOD RIVER COUNTY DEED RECORDS MICROFILM #990589
HOOD RIVER COUNTY DEED RECORDS MICROFILM #20032886
HOOD RIVER COUNTY DEED RECORDS MICROFILM #20036583
HOOD RIVER COUNTY DEED RECORDS MICROFILM #20036798
HOOD RIVER COUNTY DEED RECORDS MICROFILM #20042441
HOOD RIVER COUNTY DEED RECORDS MICROFILM #20062245
HOOD RIVER COUNTY DEED RECORDS MICROFILM #20063123
HOOD RIVER COUNTY DEED RECORDS MICROFILM #200702925
HOOD RIVER COUNTY DEED RECORDS MICROFILM #200702926

EASEMENTS:
HOOD RIVER COUNTY EASEMENT INSTRUMENT #872431
THIS EASEMENT IS DESCRIBED IN INCORRECT LOCATION, EXHIBIT A MAP SHOWS AN UNDERGROUND POWER LINE IN THE GENERAL AREA OF THIS PROPERTY.
HOOD RIVER COUNTY EASEMENT INSTRUMENT #20032352
THIS EASEMENT IS LOCATED ON THE SOUTH 10 FEET OF LOT 5 AND ALONG THE WEST LINE OF LOT 5 TO A POINT; THEN NORTH WESTERLY THROUGH LOT 6. EXACT LOCATION IS UNKNOWN. SEE EXHIBIT A.
HOOD RIVER COUNTY EASEMENT INSTRUMENT #20032886
HOOD RIVER COUNTY EASEMENT INSTRUMENT #20036582
HOOD RIVER COUNTY EASEMENT INSTRUMENT #20033218

COVENANTS, CONDITIONS AND RESTRICTIONS:
THE "BUILDING MAINTENANCE AGREEMENT" IS MADE BY MARC IGOLEN & ED ABLES AND DESCRIBED IN THE HOOD RIVER COUNTY DEED
RECORDS AS MICROFILM NUMBER 2008-01591 RECORDED
April, 23, 2008 HOOD RIVER COUNTY, OREGON.

NOTE:
As per O.R.S. 92.120(3) I, Erik M. Carlson, certify this plat to be an exact copy of the original plat recorded in the county recorders office.

Certified to be a true and correct copy of the ORIGINAL Dept. of Records & Assessment By [Signature] Deputy

TERRA SURVEYING
DATE: MARCH 10, 2008
SCALE: 1" = 10'
PROJECT: 206040
ASSESSOR'S MAP: 3N-10E-25CD TL 904
P.O. BOX 617
HOOD RIVER, OREGON 97031
PHONE & FAX: (541) 386-4531
E-Mail: terra@gorge.net

- LEGEND:**
- SET 5/8" X 30" IRON ROD WITH PLASTIC CAP
 - FOUND MONUMENT OF RECORD
 - ◆ TEMPORARY BENCHMARK (ASSUMED)
 - CALCULATED, NOT FOUND OR SET
- () DEED OR PLAT CALL

TOWNHOUSE PARTITION PLAT for MARC IGOLEN & ED ABLES