

SEC. 25 T.3 N. R.10 E. W.M.

HOOD RIVER COUNTY  
SURVEYOR'S OFFICE

CS# 2008 036

DATE FILED: 5/11/08

BY: *Paul J. ...*

**INDEX:**

PAGE 1. TITLE AND NARRATIVE  
PAGE 2. MATCHLINE A  
PAGE 3. MATCHLINE B  
PAGE 4. MATCHLINE C  
PAGE 5. END OF SURVEY  
PAGE 6. REFERENCES, CORNER NOTES, CURVE AND LINE TABLE,  
PAGE 7. COORDINATE TABLES  
PAGE 8. COORDINATE TABLES  
PAGE 9. SHAPE/SHADE KEY  
PAGE 10. CONTROL DIAGRAM

**NARRATIVE:**

THE PURPOSE OF THIS SURVEY IS TO DETERMINE THE BOUNDARY OF TAX LOT 100 IN SECTION 25, TOWNSHIP 3 NORTH, RANGE 10 EAST. THIS TRACT OF LAND IS CALLED PARCEL 1 OF PARTITION PLAT 2005 26P, FILED FOR RECORD ON DECEMBER 23, 2005 IN HOOD RIVER COUNTY RECORDS.

I FOUND THAT MANY GOVERNMENT CORNERS AND DONATION LAND CLAIMS (DLC) IN SECTION 25 WERE MISSING AS A RESULT OF THE BONNEVILLE POOL AND THE DEVELOPMENT OF THE PORT AREA. IN MY OPINION THE BEST METHOD OF RELOCATING THE GOVERNMENT CORNERS IN SECTION 25 IS DESCRIBED IN THE NARRATIVE AS FOLLOWS:  
THE FIRST SECTION TIES WERE MADE BY FIELD LOCATING THE SOUTHEAST AND SOUTHWEST CORNERS OF SECTION 25. THE EAST-WEST POSITION OF THE WEST LINE OF SECTION 25 WAS DETERMINED BY MEASURING FROM THE NORTHWEST CORNER OF THE NATHANIEL COE D.L.C. #37 HOLDING THE D.L.C. PLAT DISTANCE OF 3.06 CHAINS TO A POINT ON THE SAID WEST LINE. THE NORTHWEST CORNER OF THE COE D.L.C. WAS CALCULATED BY LOCATING A CORPUS OF ENGINEERS 3" BRASS CAP SET AS A REFERENCE TO THE COE CORNER BEFORE THE BONNEVILLE POOL. I DECIDED TO HOLD THE CALCULATED POSITION OF THE NATHANIEL COE CORNER BECAUSE IT WAS ESTABLISHED BEFORE THE GENERAL LAND OFFICE (GLO) SECTION SURVEY. I HELD THE ORIGINAL PLAT DISTANCES ON THE EAST AND WEST LINES OF SECTION 25. THESE POSITIONS WERE CALCULATED BASED ON THE ORIGINAL MEANDER LINE FIELD NOTES FROM THE MEANDER CORNERS. THE COLUMBIA RIVER WAS MEANDERED AS PART OF THE ORIGINAL GLO SURVEY ON APRIL 19, 1860, STARTING ON THE EAST MEANDER POST AND HEADING WEST TO CLOSE ON THE WEST LINE MEANDER POST. IN CALCULATING THE MEANDER TRAVERSE THE RELATIVE CLOSURE WAS ± 20 FEET IN A MILE, WHICH WAS A REASONABLE CLOSURE FOR THE METHODS USED IN THOSE DAYS. I USED A COMPASS RULE ADJUSTMENT TO CLOSE SAID TRAVERSE.

THE EAST LINE OF SECTION 25 WAS DETERMINED BY RECONSTRUCTING THE BONNEVILLE PROJECT SURVEY OF 1935, WHICH WAS ORIGINALLY DETERMINED BY RUNNING CARDINAL NORTH AS WAS STANDARD PRACTICE OF THE DAY WHEN WORKING ON A FRACTIONAL BOUNDARY WITH NO SECTION LINE TO CLOSE UPON. IN MY OPINION, THIS WAS ACCEPTABLE SUPPLEMENTAL SURVEY INFORMATION TO RE-ESTABLISH THE LOCATION OF THE EAST LINE OF SECTION 25. THIS LINE WAS ALSO TIED TO THE ORIGINAL LOCATION OF THE EAST LINE OF NATHANIEL BENSON D.L.C. #40 AS SHOWN ON SAID BONNEVILLE SURVEY. THE BEARING AND DISTANCES BETWEEN FOUND MONUMENTS AS SHOWN WERE USED TO CALCULATE THE SOUTH QUARTER CORNER OF THE SECTION. THE BEARINGS SHOWN ON THE INTERIOR PROTRACTION WERE DETERMINED USING WEIGHTED MEAN BEARINGS AS NO MONUMENTATION WAS AVAILABLE IN THIS FRACTIONAL SECTION.

THE PORT OF HOOD RIVER PROVIDED RECORD DEEDS FROM THE OREGON LUMBER COMPANY TO THE PORT OF HOOD RIVER DATED APRIL 4, 1955 IN BOOK 54 AND PAGE 537 IN THE HOOD RIVER COUNTY RECORDERS OFFICE. THE TRACTS DESCRIBED IN THE DEED CONVEYS GOVERNMENT LOTS 1,3,4,5,6 AND 7 AS WELL AS THE SOUTH HALF OF THE NORTHWEST QUARTER OF SAID SECTION AND HOOD RIVER COUNTY DEED OF RECORD # 720257 FOR GOVERNMENT LOT 2. THESE GOVERNMENT LOTS ARE MOSTLY SUBMERGED DUE TO THE BONNEVILLE POOL. I USED THE ORIGINAL MEANDERED NOTES FROM THE 1860 SURVEY WORK TO RECONSTRUCT THE MEANDER LINE AS SURVEYED IN 1860. THIS MEANDER LINE WAS NOT INTENDED TO BE USED AS AN OWNERSHIP LINE, IT WAS INTENDED DEFINE SINUOSITIES OF THE BANKS OF THE BODY OF WATER AS A MEANS OF ASCERTAINING QUANTITY OF THE UPLAND OR GOVERNMENT LOTS. THE PROPERTY BOUNDARY IS THE ORDINARY HIGH WATER LINE AS IT WAS AT THE TIME OF STATEHOOD. WITHOUT CONTRARY EVIDENCE TO SHOW THE POSITION OF THE ORDINARY HIGH WATER LINE AT THE TIME OF STATEHOOD, THE GOVERNMENT MEANDER LINE WOULD HAVE THE CLOSEST RELATIONSHIP TO THE LOCATION OF THE OWNERSHIP LINE. THIS OWNERSHIP LINE WAS FIXED AT THE TIME THE COLUMBIA RIVER WAS ARTIFICIALLY FLOODED. THE ORIGINAL GLO NOTES FROM 1860 BEGIN THE MEANDERING FROM A POST SET ON THE LEFT BANK OF THE COLUMBIA RIVER SHOWING THAT THIS MEANDER POST WAS ON THE BANK OF THE RIVER IN A HISTORICALLY SEASONAL HIGH WATER TIME OF THE YEAR. THE ORIGINAL SURVEY PLAT OF TOWNSHIP 3 NORTH AND RANGE 10 EAST COMMENCED ON MARCH 25TH OF 1860 DEPICTS THE MEANDER LINE TO FOLLOW THE EDGE OF WATER AT THAT TIME. THIS WAS ALSO WHEN THE MEANDER POST WAS SET ON THE SOUTH BANK OF THE COLUMBIA RIVER, USING AERIAL PHOTOGRAPHS FROM THE 1930'S BEFORE THE BONNEVILLE DAM WAS CONSTRUCTED SHOWS CONSISTENCY AND CONTINUITY IN THE STATE OF THE EDGE OF WATER. THIS CAN ALSO BE DEMONSTRATED ON ALL OF THE OLD PLAT MAPS SHOW THE WATERLINE CONSISTENT WITH THE MEANDER LINE. IN MY OPINION THE MEANDER LINE OF THE COLUMBIA IS THE BEST EVIDENCE OF THE BOUNDARY LINES OF THE GOVERNMENT LOTS SHOWN ON THIS SURVEY. THIS METHOD WAS REVIEWED BY THE BUREAU OF LAND MANAGEMENT (BLM) OFFICE IN PORTLAND AND UNDER SIMILAR CONDITIONS THE BLM OFFICE AGREED THE ORIGINAL MEANDER LINES CAN BE USED TO RECONSTRUCT THE LAST LOCATABLE ORDINARY HIGH WATER LINE. THIS CAN BE FURTHER EXPLORED IN THE U.S. SUPREME COURT CASE NAMED HARDIN V. JORDAN, 140 US 371 IN 1891.

AS FOR THE INTERIOR BOUNDARY LINE OF TAX LOT 100 WE WERE ABLE TO LOCATED ORIGINAL MONUMENTATION WITHIN THE PORT AREA. MANY SURVEYS HAVE BEEN COMPLETED IN THIS AREA. IN MOST CASES THE MONUMENTATION FOUND MEASURED FAIRLY WELL WITH THE RECORD DISTANCES SHOWN IN THE DEED RESEARCH. MONUMENTS WHICH WERE FOUND WERE MOSTLY FOUND IN THE WESTERN PORTIONS OF THE PORT AREA DUE TO THE DEVELOPMENT IN THE AREA AND VERY OLD DEED MONUMENTS. THE DLC CORNERS WERE CALCULATED BASED ON THE DEED CALLS AND MEASUREMENTS FROM THE MONUMENTS FOUND TO THE WEST.

ALL FOUND MONUMENTS WERE TIED AND ADJUSTED USING THE COMPASS RULE ADJUSTMENT. SEE FACE OF THE MAP FOR DETAILS.  
CONTROL NETWORK WAS TIED INTO CONTROL POINT NAMED PONDER-2 USING 4-LOCUS STATIC G.P.S RECEIVERS. SITE CONTROL WAS TIED WITH TOPCON ITS-1B 5" TOTAL STATION SERVICED BY PPI GROUP OF PORTLAND IN FEBRUARY OF 2007.

NOTE: LAND FEATURES SHOWN WERE LOCATED BY AERIAL TOPOGRAPHICAL SURVEY COMPLETED BY DAVID SMITH AND ASSOCIATES ON JANUARY 22ND OF 2007 AT 1:00PM. THIS IS IMPORTANT TO SHOW THE TIME OF AERIAL OBSERVATION BECAUSE THE FLUXUATION OF THE BONNEVILLE POOL WILL CHANGE THE HORIZONTAL POSITION OF THE WATERLINE, ALSO THE CENTERLINE OF I-84 WAS CHECKED IN FIELD TO GUARANTEE CORRECTNESS.

**TERRA SURVEYING**

REGISTERED  
PROFESSIONAL  
LAND SURVEYOR

*Wil M. Carlson*

OREGON  
December 30, 2005  
ERIK M. CARLSON  
72306  
Expires: December, 2007

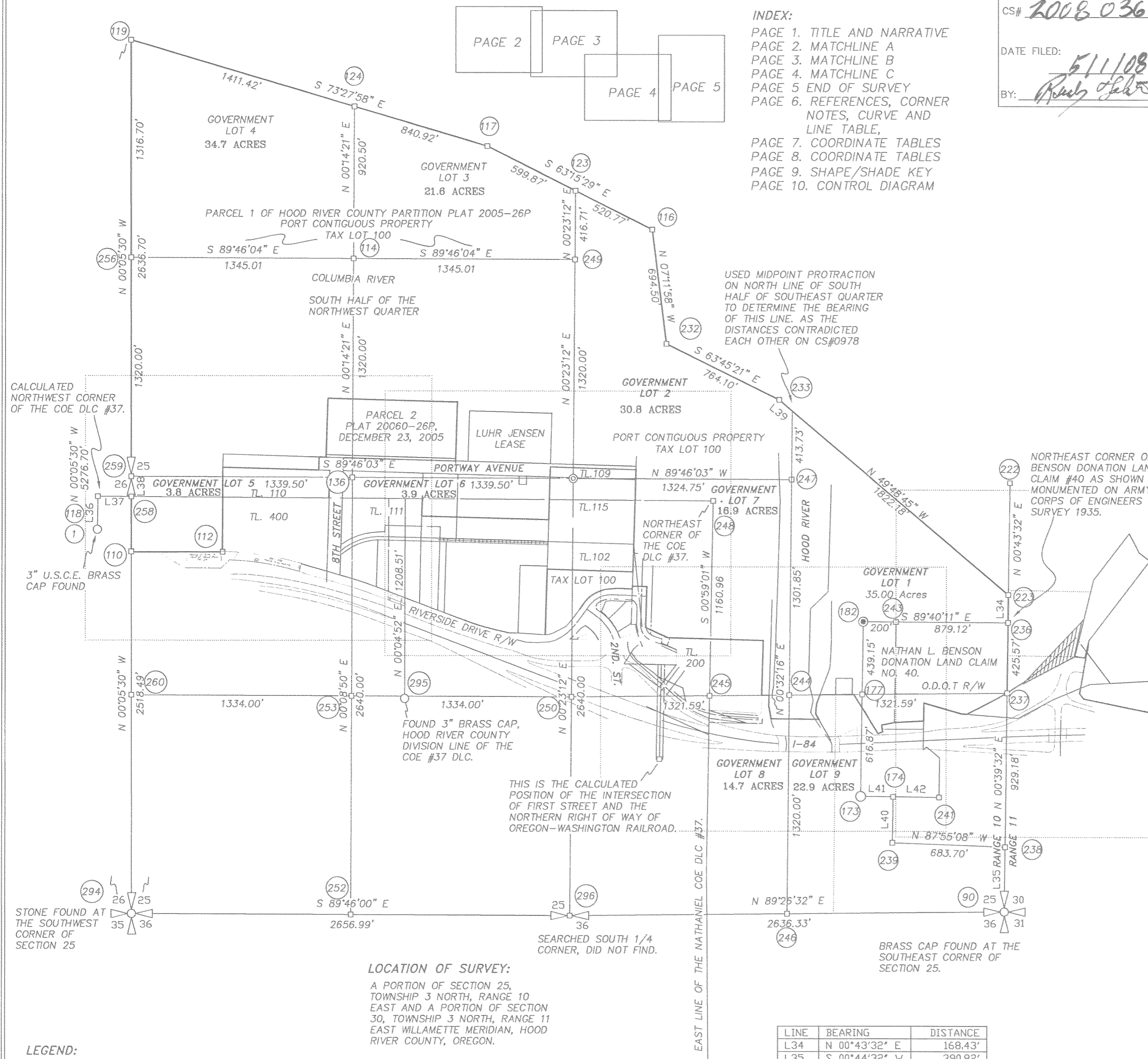
DATE: APRIL 15, 2008  
SCALE: 1" = 500'  
PROJECT: 207012  
ASSESSORS MAP: 3N 10 25

P.O. BOX 617  
HOOD RIVER, OREGON 97031

PHONE & FAX: (541) 386-4531  
terra@gorge.net

ODOT REGION 1 SURVEY GROUP  
123 NW FLANDERS  
PORTLAND, OR 97209-4037  
O.D.O.T. CONTRACT NO. 26542

APRIL 15, 2008  
SCALE 1" = 500'  
SHEET 1 OF 10



LINE	BEARING	DISTANCE
L34	N 00°43'32" E	168.43'
L35	S 00°44'32" W	390.82'
L36	N 00°42'28" E	200.00'
L37	S 89°36'40" E	201.96'
L38	N 00°05'30" W	121.51'
L39	S 49°48'45" E	103.98'
L40	N 00°37'06" E	276.51'
L41	N 89°17'17" W	198.00'
L42	S 89°17'17" E	279.04'

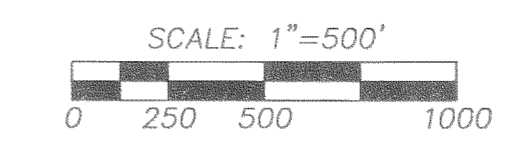
- LEGEND:**
- SET 5/8" X 30" IRON ROD WITH PLASTIC CAP
  - ⊙ SET 3" ALUMINUM CAP
  - ⊙ SET 3" BRASS CAP
  - FOUND MONUMENT OF RECORD
  - CALCULATED, NOT FOUND
  - ## CORNER NUMBER, SEE COORDINATE TABLE.
  - ( ) DEED OR PLAT CALL

**LOCATION OF SURVEY:**  
A PORTION OF SECTION 25, TOWNSHIP 3 NORTH, RANGE 10 EAST AND A PORTION OF SECTION 30, TOWNSHIP 3 NORTH, RANGE 11 EAST WILLAMETTE MERIDIAN, HOOD RIVER COUNTY, OREGON.

**BASIS OF BEARING AND COORDINATE SYSTEM:**  
BASIS OF BEARING OF THIS SURVEY IS OREGON STATE PLANE, NORTH AMERICAN DATUM 1983 (N.A.D. 83), NORTH ZONE (3601), GRID BEARINGS & INTERNATIONAL FEET.

U.S.G.S STATION PONDER-2  
LATITUDE = 45°42'39.37105" (N)  
LONGITUDE = 121°32'59.76083" (W)

NOTE: THIS LINE TABLE PERTAINS TO THIS SHEET ONLY.



HOOD RIVER COUNTY  
SURVEYOR'S OFFICE

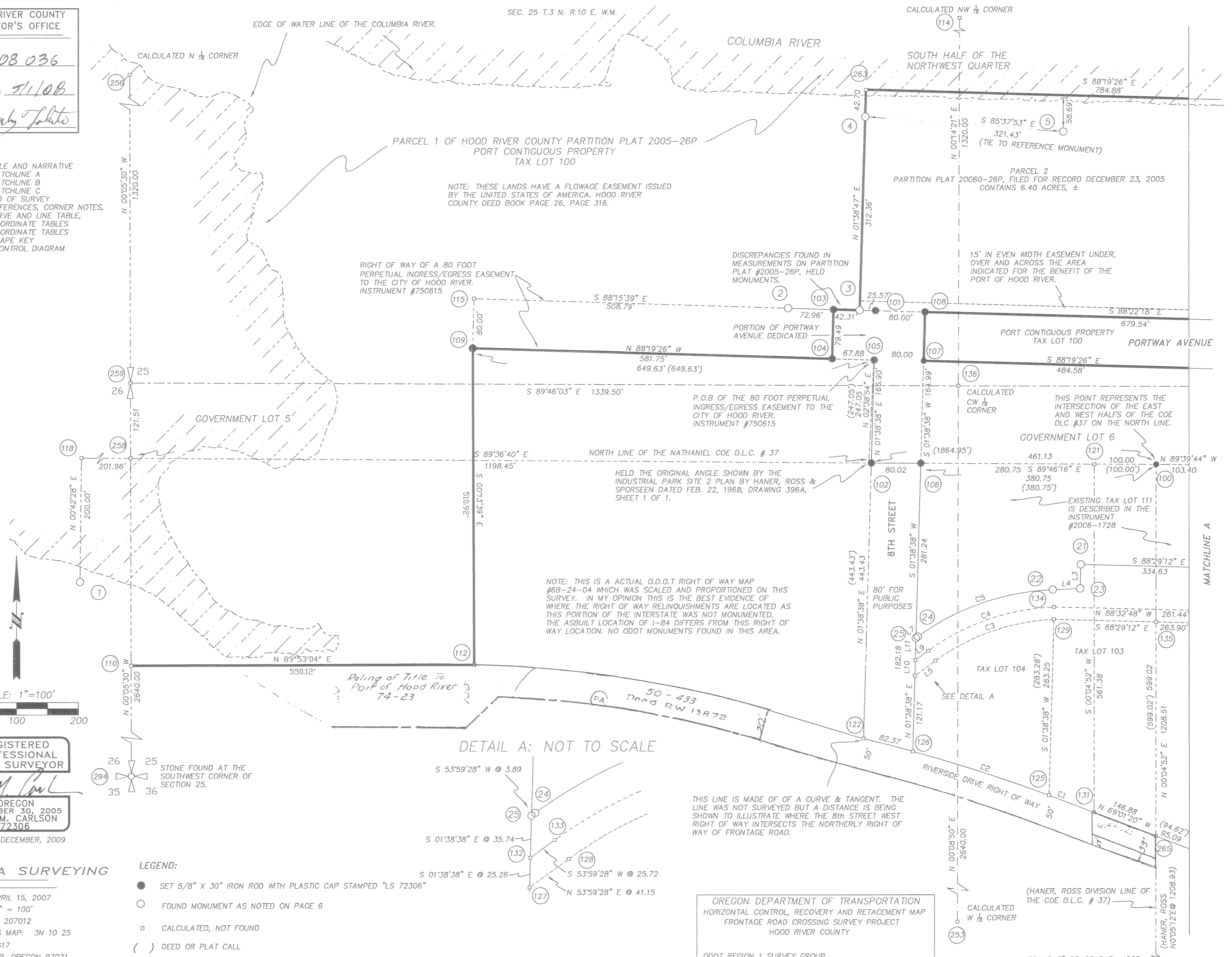
CS# 2008 036

DATE FILED: 5/1/08

BY: *Bonny Tolato*

INDEX:

- PAGE 1. TITLE AND NARRATIVE
- PAGE 2. MATCHLINE A
- PAGE 3. MATCHLINE B
- PAGE 4. MATCHLINE C
- PAGE 5. END OF SURVEY
- PAGE 6. REFERENCES, CORNER NOTES, CURVE AND LINE TABLE,
- PAGE 7. COORDINATE TABLES
- PAGE 8. COORDINATE TABLES
- PAGE 9. SHAPE KEY
- PAGE 10. CONTROL DIAGRAM



NOTE: THESE LANDS HAVE A FLOWAGE EASEMENT ISSUED BY THE UNITED STATES OF AMERICA, HOOD RIVER COUNTY DEED BOOK PAGE 26, PAGE 316.

RIGHT OF WAY OF A 80 FOOT PERPETUAL INGRESS/EGRESS EASEMENT TO THE CITY OF HOOD RIVER. INSTRUMENT #750615

DISCREPANCIES FOUND IN MEASUREMENTS ON PARTITION PLAT #2005-26P, HELD MONUMENTS.

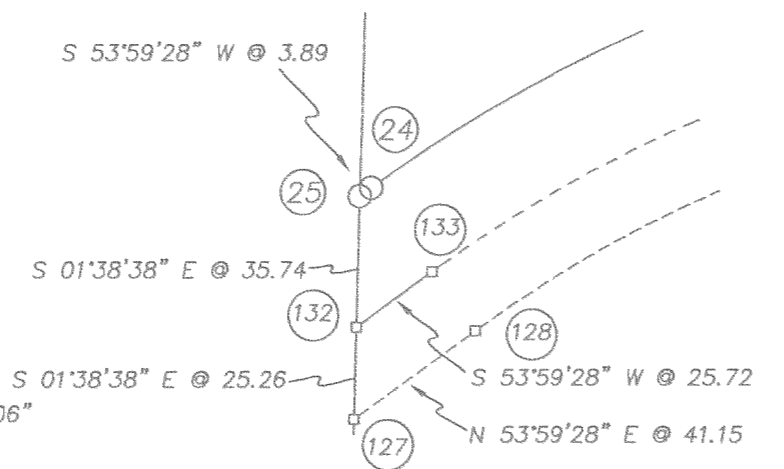
P.O.B OF THE 80 FOOT PERPETUAL INGRESS/EGRESS EASEMENT TO THE CITY OF HOOD RIVER. INSTRUMENT #750615

HELD THE ORIGINAL ANGLE SHOWN BY THE INDUSTRIAL PARK SITE 2 PLAN BY HANER, ROSS & SPORSEEN DATED FEB. 22, 1968, DRAWING 396A, SHEET 1 OF 1.

NOTE: THIS IS A ACTUAL O.D.O.T RIGHT OF WAY MAP #68-24-04 WHICH WAS SCALED AND PROPORTIONED ON THIS SURVEY. IN MY OPINION THIS IS THE BEST EVIDENCE OF WHERE THE RIGHT OF WAY RELINQUISHMENTS ARE LOCATED AS THIS PORTION OF THE INTERSTATE WAS NOT MONUMENTED. THE ASBUILT LOCATION OF I-84 DIFFERS FROM THIS RIGHT OF WAY LOCATION. NO ODOT MONUMENTS FOUND IN THIS AREA.

Rating of Title to Port of Hood River 74-23

DETAIL A: NOT TO SCALE



THIS LINE IS MADE OF OF A CURVE & TANGENT. THE LINE WAS NOT SURVEYED BUT A DISTANCE IS BEING SHOWN TO ILLUSTRATE WHERE THE 8th STREET WEST RIGHT OF WAY INTERSECTS THE NORTHERLY RIGHT OF WAY OF FRONTAGE ROAD.

OREGON DEPARTMENT OF TRANSPORTATION  
HORIZONTAL CONTROL, RECOVERY AND RETACEMENT MAP  
FRONTAGE ROAD CROSSING SURVEY PROJECT  
HOOD RIVER COUNTY

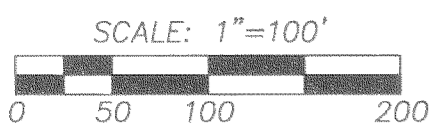
ODOT REGION 1 SURVEY GROUP  
123 NW FLANDERS  
PORTLAND, OR 97209-4037  
O.D.O.T. CONTRACT NO. 26542

APRIL 15, 2008  
SCALE 1" = 100'  
SHEET 2 OF 10

(HANER, ROSS DIVISION LINE OF THE COE D.L.C. # 37)

FOUND 3" BRASS CAP, HOOD RIVER COUNTY DIVISION LINE OF THE COE #37 DLC.

CS 2008 036-2



REGISTERED  
PROFESSIONAL  
LAND SURVEYOR

*Erik M. Carlson*

OREGON  
DECEMBER 30, 2005  
ERIK M. CARLSON  
72306

Expires DECEMBER, 2009

TERRA SURVEYING

DATE: APRIL 15, 2007  
SCALE: 1" = 100'  
PROJECT: 207012  
ASSESSORS MAP: 3N 10 25  
P.O. BOX 617  
HOOD RIVER, OREGON 97031  
PHONE & FAX: (541) 386-4531  
terra@gorge.net

LEGEND:

- SET 5/8" X 30" IRON ROD WITH PLASTIC CAP STAMPED "LS 72306"
- FOUND MONUMENT AS NOTED ON PAGE 6
- CALCULATED, NOT FOUND
- ( ) DEED OR PLAT CALL
- ## CORNER NUMBER, SEE COORDINATE TABLE

REGISTERED PROFESSIONAL LAND SURVEYOR

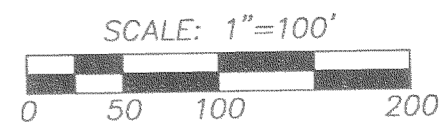
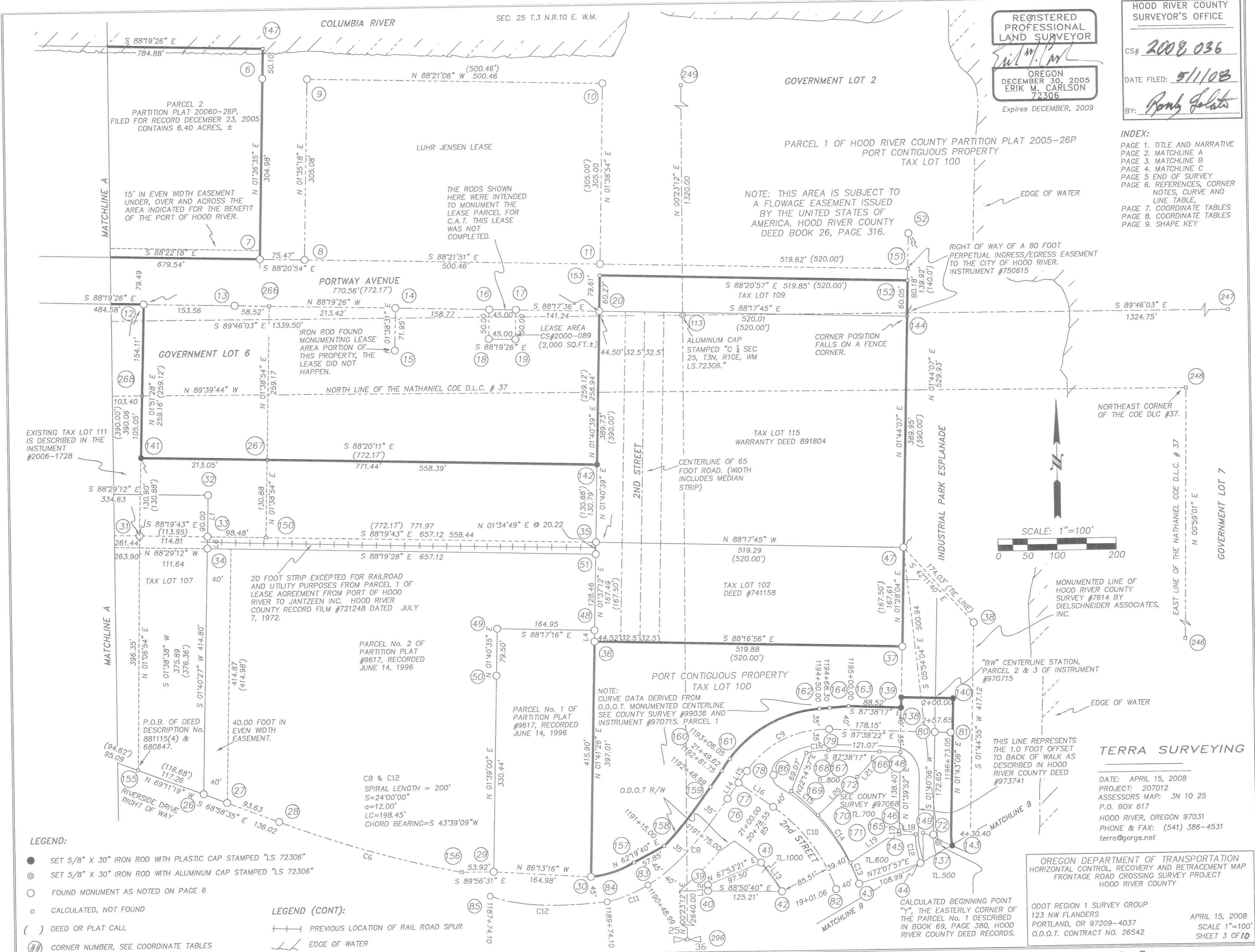
OREGON DECEMBER 30, 2005 ERIK M. CARLSON 72306 Expires DECEMBER, 2009

CS# 2008 036

DATE FILED: 5/11/08

BY: Randy Galats

INDEX: PAGE 1. TITLE AND NARRATIVE PAGE 2. MATCHLINE A PAGE 3. MATCHLINE B PAGE 4. MATCHLINE C PAGE 5. END OF SURVEY PAGE 6. REFERENCES, CORNER NOTES, CURVE AND LINE TABLE PAGE 7. COORDINATE TABLES PAGE 8. COORDINATE TABLES PAGE 9. SHAPE KEY



- LEGEND: SET 5/8" X 30" IRON ROD WITH PLASTIC CAP STAMPED "LS 72306" SET 5/8" X 30" IRON ROD WITH ALUMINUM CAP STAMPED "LS 72306" FOUND MONUMENT AS NOTED ON PAGE 6 CALCULATED, NOT FOUND DEED OR PLAT CALL CORNER NUMBER, SEE COORDINATE TABLES

- LEGEND (CONT): PREVIOUS LOCATION OF RAIL ROAD SPUR EDGE OF WATER

TERRA SURVEYING DATE: APRIL 15, 2008 PROJECT: 207012 ASSESSORS MAP: 3N 10 25 P.O. BOX 617 HOOD RIVER, OREGON 97031 PHONE & FAX: (541) 386-4531 terra@gorge.net

OREGON DEPARTMENT OF TRANSPORTATION HORIZONTAL CONTROL, RECOVERY AND RETRACEMENT MAP FRONTAGE ROAD CROSSING SURVEY PROJECT HOOD RIVER COUNTY ODOT REGION 1 SURVEY GROUP 123 NW FLANDERS PORTLAND, OR 97209-4037 O.D.O.T. CONTRACT NO. 26542 APRIL 15, 2008 SCALE 1"=100' SHEET 3 OF 10

HOOD RIVER COUNTY  
SURVEYOR'S OFFICE

CS# **2008 036**

DATE FILED: **5/1/08**

BY: *Raul Salts*

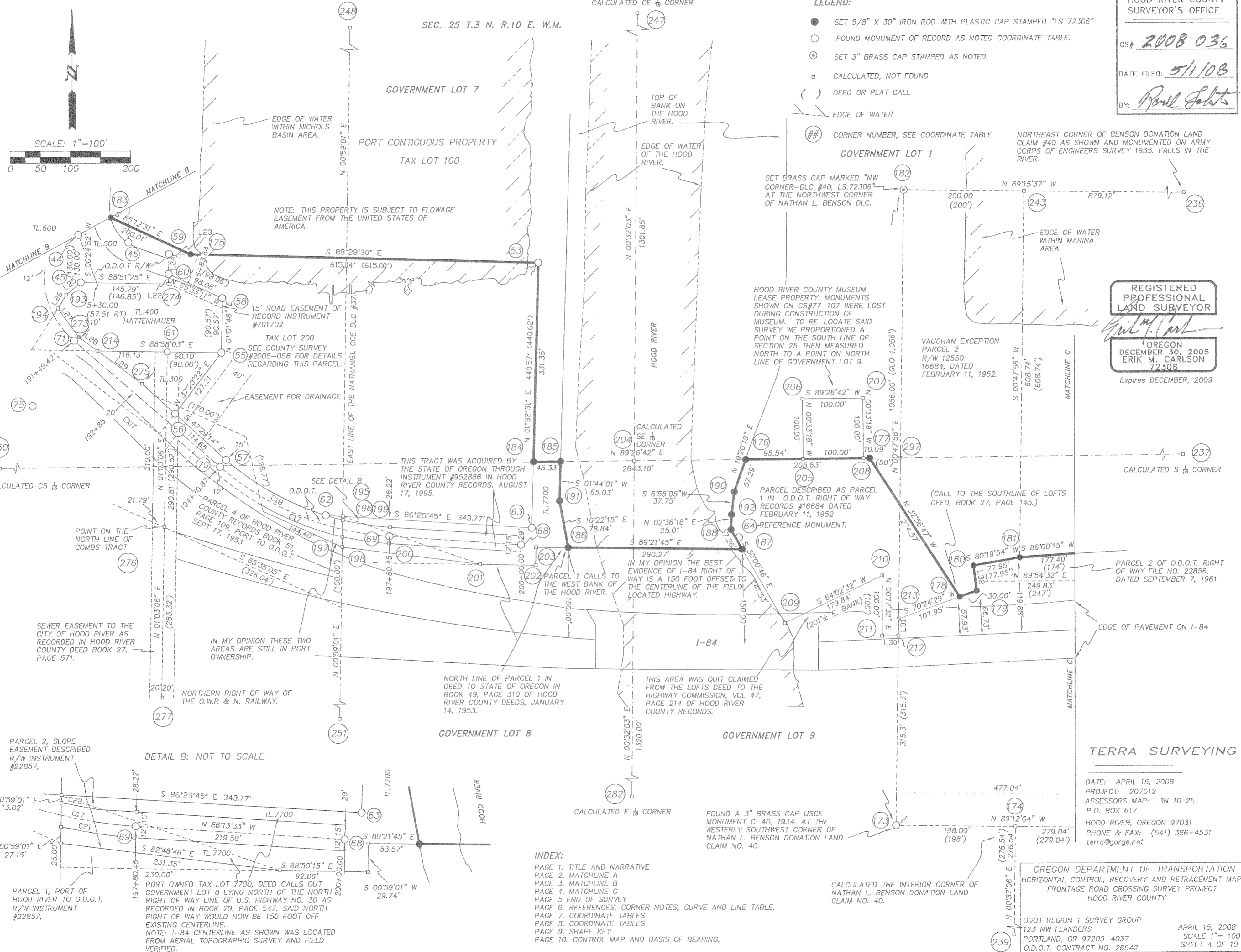
- LEGEND:**
- SET 5/8" X 30" IRON ROD WITH PLASTIC CAP STAMPED "LS 72306"
  - FOUND MONUMENT OF RECORD AS NOTED COORDINATE TABLE.
  - ⊙ SET 3" BRASS CAP STAMPED AS NOTED.
  - CALCULATED, NOT FOUND
  - ( ) DEED OR PLAT CALL
  - EDGE OF WATER
  - ## CORNER NUMBER, SEE COORDINATE TABLE

**REGISTERED PROFESSIONAL LAND SURVEYOR**

*Erik M. Carlson*

OREGON  
DECEMBER 30, 2005  
ERIK M. CARLSON  
72306

Expires DECEMBER, 2009



- INDEX:**
- PAGE 1. TITLE AND NARRATIVE
  - PAGE 2. MATCHLINE A
  - PAGE 3. MATCHLINE B
  - PAGE 4. MATCHLINE C
  - PAGE 5. END OF SURVEY
  - PAGE 6. REFERENCES, CORNER NOTES, CURVE AND LINE TABLE.
  - PAGE 7. COORDINATE TABLES
  - PAGE 8. COORDINATE TABLES
  - PAGE 9. SHAPE KEY
  - PAGE 10. CONTROL MAP AND BASIS OF BEARING.

**TERRA SURVEYING**

DATE: APRIL 15, 2008  
PROJECT: 207012  
ASSESSORS MAP: 3N 10 25  
P.O. BOX 617  
HOOD RIVER, OREGON 97031  
PHONE & FAX: (541) 386-4531  
terra@gorge.net

OREGON DEPARTMENT OF TRANSPORTATION  
HORIZONTAL CONTROL, RECOVERY AND RETRACEMENT MAP  
FRONTAGE ROAD CROSSING SURVEY PROJECT  
HOOD RIVER COUNTY

ODOT REGION 1 SURVEY GROUP  
123 NW FLANDERS  
PORTLAND, OR 97209-4037  
O.D.O.T. CONTRACT NO. 26542

APRIL 15, 2008  
SCALE 1" = 100'  
SHEET 4 OF 10

CS 2008 036-4





PAGE 1-CALCULATED MONUMENTS

POINT	NORTHING	EASTING	DESCRIPTION
110(7017)	747907.298	7940589.607	RRRW
112(7019)	747870.452	7941144.939	CITY/TL100
114(4)	749617.622	7941933.972	check
116(15)	749794.538	7943744.740	check
117(20)	750298.796	7942743.964	check
118(25)	748182.946	7940387.213	NORTHEASTCDE
119(28)	750939.769	7940584.756	CALC
123(4858)	750028.871	7943279.671	MNDR
124(4863)	750538.106	7941937.815	MNDR
232(9)	749105.511	7943831.76	MNDR
233(3)	748767.628	7944517.113	MNDR

NOTE: POINTS FROM PAGE 1 MAY BE FOUND ON THERE RESPECTIVE PAGE USING THE PAGE OVERLAY ON PAGE 1 OF THIS PLAT.

PAGE 2-SET MONUMENTS

POINT	NORTHING	EASTING	DESCRIPTION
100(308)	748170.300	7942248.325	DIV/CDE NLN
101(4773)	748418.761	7941794.636	DEED >. CLC
102(4800)	748173.427	7941787.595	NW CITY/PORT
103(4805)	748420.702	7941726.784	NW PORT RW
104(4806)	748341.242	7941724.503	SW PORT RW
105(4807)	748339.256	7941792.354	PORT/BRW
106(4808)	748172.884	7941867.612	8TH@NECITY
107(4809)	748337.801	7941872.345	PORT/BNE
108(4826)	748416.376	7941874.601	NE RW@PARK
109(7016)	748358.258	7941143.002	NWCITY

PAGE 2-FOUND MONUMENTS

POINT	NORTHING	EASTING	DESCRIPTION
1(6001)	747982.961	7940384.742	BCFD
2(6012)	748422.784	7941653.858	IRFD
3(4813)	748419.494	7941769.078	IRFD LS1815
4(6007)	748731.728	7941778.052	IRFD
5(6006)	748707.245	7942098.546	IPFD
21(15619)	748009.270	7942126.374	1" SURVEY NAIL
22(15617)	747968.652	7942080.973	1" SURVEY NAIL
23(15618)	747970.375	7942125.346	1" SURVEY NAIL
24(15615)	747892.986	7941862.656	IRFD LS1815
25(15614)	747890.702	7941859.513	IRFD LS1815
295(6000)	746961.898	7942246.719	BRASS CAP FOUND

PAGE 2-CALCULATED MONUMENTS

POINT	NORTHING	EASTING	DESCRIPTION
110(7017)	747907.298	7940589.607	RRRW
112(7019)	747870.452	7941144.939	CITY/TL100
114(4)	749617.622	7941933.972	check
115(10)	748438.225	7941145.297	EASE
116(15)	749794.538	7943744.740	check
117(20)	750298.796	7942743.964	check
118(25)	748182.946	7940387.213	check
119(28)	750939.769	7940584.756	CALC
121(4812)	748170.979	7942148.325	PDB 670498
122(4827)	747728.894	7941774.836	SW8TH@FRONT
123(4858)	750028.871	7943279.671	
124(4863)	750538.106	7941937.815	MNDR
125(15605)	747637.258	7942074.693	PT DEED>.
126(15606)	747708.596	7941854.286	PT DEED>.
127(15607)	747829.721	7941857.763	NW DEED>.
128(15608)	747853.915	7941891.052	PC DEED>.
129(15610)	747920.389	7942082.846	PT DEED>.
131(15622)	747609.602	7942147.530	R/W
132(15624)	747854.972	7941858.488	DLDP
133(15625)	747870.093	7941879.294	DLDP
134(15626)	747940.374	7942082.071	DLDP
135(15627)	747916.026	7942247.964	HAN/ROS
136(15628)	748297.634	7941928.462	CW1/16
253(15691)	746977.650	7941925.072	calc
256(15687)	749623.042	7940586.862	calc
259(15702)	748303.057	7940588.973	EAST 1/4 SEC 25
265(15623)	747571.281	7942247.475	94.67 R/W
294(4852)	745663.076	7940593.200	STONE FOUND SW SEC 25

PAGE 3-SET MONUMENTS

POINT	NORTHING	EASTING	DESCRIPTION
113(15631)	748292.195	7943267.951	C1/4
137(5027)	747397.438	7943686.231	POINT*Y*
138(7000)	747625.049	7943626.965	TL100@RW
139(7001)	747642.258	7943627.544	TL100@RW
140(7002)	747639.424	7943715.015	TL100@RW
141(15548)	748064.599	7942348.318	W.TL116/117
142(15549)	748042.204	7943119.437	NE DEED 780913
143(15642)	747391.302	7943709.770	TL100

NOTE: NUMBERS IN PARENTHESIS ARE TERRA SURVEYING POINT NUMBERS

PAGE 3-FOUND MONUMENTS

POINT	NORTHING	EASTING	DESCRIPTION
6(6005)	748701.924	7942562.431	IRFD
7(6003)	748397.066	7942553.864	IRFD
8(6002)	748394.890	7942629.301	IRFD
9(6004)	748699.762	7942637.975	IRFD
10(4754)	748685.463	7943138.011	NE LUHRJ CLC
11(6016)	748380.603	7943129.558	IRFD
12(15532)	748323.627	7942356.719	N.TL111/116
13(6011)	748319.098	7942510.240	IRFD
14(6010)	748311.115	7942782.061	IRFD
15(6009)	748239.191	7942779.999	IRFD
16(6013)	748306.503	7942940.721	IRFD
17(6014)	748305.242	7942985.772	IRFD
18(6018)	748256.500	7942939.116	SURVNL
20(6015)	748301.035	7943126.949	IRFD
26(6041)	747495.852	7942445.982	IRFD
27(6042)	747480.682	7942485.533	IRFD
28(6043)	747447.130	7942573.028	IRFD
29(6044)	747358.053	7942934.509	IRFD
30(6021)	747347.179	7943099.135	IRFD
31(15528)	747933.768	7942344.074	T117/111/100
32(15620)	748000.432	7942460.886	NE PARKING
33(15526)	747930.419	7942458.837	RDD 5/8" FD
34(15525)	747910.471	7942458.254	FD5/8=4781
35(6023)	747911.466	7943115.643	IPFD
36(6022)	747744.016	7943110.778	IRFD
37(6020)	747728.318	7943630.493	IPFD
38(6017)	747767.016	7943751.743	IRFD
39(6028)	747330.709	7943296.852	IRFD
40(6029)	747320.780	7943296.741	IRFD
41(6027)	747367.407	7943387.179	IRFD
42(6026)	747318.254	7943421.927	IRFD
43(6025)	747329.395	7943552.149	IRFD
44(6054)	747362.835	7943655.883	IRFD
47(4739)	747895.724	7943634.728	TRU SE=439
48(15550)	747762.894	7943111.346	FD5/8=4783
49(15502)	747767.827	7942946.350	RDD 5/8" FD
50(4778)	747688.357	7942944.024	IRFD
51(15503)	747891.258	7943115.085	FD5/8=4785
52(4765)	748425.408	7943650.776	ROSS SE LOT1
72(6056)	747410.467	7943678.216	ALCAPFD
76(6036)	747475.638	7943332.170	BCFD
77(6035)	747502.250	7943351.259	BCFD
78(6034)	747522.018	7943365.377	BCFD
79(6033)	747590.384	7943505.281	BCFD
80(6032)	747583.046	7943683.285	BCFD
81(6031)	747581.953	7943709.874	BCFD
82(6038)	747320.847	7943513.399	BCFD
86(6024)	747514.737	7943410.321	IRFD

PAGE 3-CALCULATED MONUMENTS

POINT	NORTHING	EASTING	DESCRIPTION
144(4727)	748294.632	7943668.222	S.PORWAYTFC
145(4788)	747411.734	7943620.705	DSHR BW >.
146(4789)	747410.919	7943648.132	BW 30'LEFT
147(4825)	748752.343	7942563.848	NE CITY
148(5001)	747550.078	7943624.725	PDBN02
149(5024)	747413.905	7943660.834	CALC
150(15534)	747927.540	7942557.513	S.TL117/118
151(15553)	748365.633	7943648.965	R/W@PLAT
152(15629)	748345.517	7943648.355	NE109
153(15630)	748361.275	7943128.741	NW109
155(15632)	747537.496	7942336.361	PDB1115.680647
156(15633)	747358.086	7942880.356	R/W
157(15634)	747370.657	7943172.690	R/W2ND
158(15635)	747397.393	7943223.703	R/W2ND
159(15636)	747496.038	7943303.730	R/W2ND
160(15637)	747522.651	7943322.819	R/W2ND
161(15638)	747542.360	7943336.895	R/W2ND
162(15639)	747625.019	7943489.367	R/W2ND
163(15640)	747628.698	7943538.522	R/W2ND
164(15641)	747626.332	7943506.910	R/W2ND
165(15643)	747417.454	7943620.871	DSHR
166(15644)	747551.529	7943589.561	RW2ND
167(15645)	747555.068	7943503.758	RW2ND
168(15646)	747551.053	7943466.136	RW2ND
169(15647)	747487.125	7943439.983	RW2ND
170(15648)	747446.107	7943484.478	RW2ND
171(15649)	747365.199	7943537.965	RW2ND
172(15650)	747509.717	7943551.896	TL800/700
246(15697)	745665.090	7944568.266	POINT OF EAST LINE OF DLC #37
247(15699)	748286.816	7944592.877	CE 1/16
248(310)	748157.624	7944116.245	NE CDE#37
249(15698)	749612.165	7943276.859	CN 1/16
296(4857)	745652.256	7943250.165	CALCULATED SOUTH 1/4
266(15533)	748317.424	7942568.733	N.TL116/118
267(15705)	748058.414	7942561.280	DEED LINE
268(15704)	748169.598	7942351.723	DEED LINE

HOOD RIVER COUNTY SURVEYOR'S OFFICE

CS# 2008 036

DATE FILED: 5/1/08

BY: *Randy Tratto*

INDEX:

- PAGE 1. TITLE AND NARRATIVE
- PAGE 2. MATCHLINE A
- PAGE 3. MATCHLINE B
- PAGE 4. MATCHLINE C
- PAGE 5. END OF SURVEY
- PAGE 6. REFERENCES, CORNER NOTES, CURVE AND LINE TABLE.
- PAGE 7. COORDINATE TABLES
- PAGE 8. COORDINATE TABLES
- PAGE 9. SHAPE KEY
- PAGE 10. CONTROL MAP AND BASIS OF BEARING.

LEGEND:

- IRFD = IRON ROD FOUND.
- IPFD = IRON PIPE FOUND.
- RRSPIKE = RAIL ROAD SPIKE FOUND.
- BCFD = BRASS CAP FOUND.
- ALUMCAPFD = ALUMINUM CAP FOUND.

REGISTERED PROFESSIONAL LAND SURVEYOR

*Erik M. Carlson*

OREGON DECEMBER 30, 2005 ERIK M. CARLSON 72306

Expires DECEMBER, 2009

TERRA SURVEYING

DATE: APRIL 15, 2008  
 SCALE: 1" = 100'  
 PROJECT: 207012  
 ASSESSORS MAP: 3N 10 25  
 P.O. BOX 617  
 HOOD RIVER, OREGON 97031  
 PHONE & FAX: (541) 386-4531  
 terra@gorge.net

OREGON DEPARTMENT OF TRANSPORTATION  
 COORDINATE TABLES  
 FRONTAGE ROAD CROSSING SURVEY PROJECT  
 HOOD RIVER COUNTY

ODOT REGION 1 SURVEY GROUP  
 123 NW FLANDERS  
 PORTLAND, OR 97209-4037  
 O.D.O.T. CONTRACT NO. 26542  
 APRIL 15, 2008  
 SCALE 1" = 100'  
 SHEET 7 OF 10

CS 2008 036-7

PAGE 4--SET MONUMENTS

POINT	NORTHING	EASTING	DESCRIPTION
175(7003)	747330.036	7943842.415	TL100@RW
176(7004)	746986.826	7944766.157	TL100&STATE
177(7005)	746988.818	7944971.781	TL100&STATE
178(7006)	746758.401	7945121.109	TL100&STATE
179(7007)	746768.461	7945149.372	TL100&STATE
180(7008)	746810.372	7945143.997	TL100&STATE
181(7009)	746823.463	7945220.840	TL100&STATE
182(7020)	747434.732	7945029.344	NWDLC#40
183(15642)	747391.302	7943709.770	TL100
184(15651)	746983.398	7944412.337	TL100/TL200
185(15652)	746983.837	7944457.668	TL100/TL7700
186(15653)	746841.285	7944469.893	TL100/TL7700/RW
187(15654)	746838.055	7944760.143	TL100/RW
188(15655)	746870.322	7944741.504	TL100/RW
189(15656)	746932.773	7944747.188	TL100/RW
190(15657)	747330.036	7943842.415	TL100/TL200
191(15658)	746918.835	7944455.700	TL100/TL7700
192(15659)	746895.302	7944742.641	TL100/RW

PAGE 4--FOUND MONUMENTS

POINT	NORTHING	EASTING	DESCRIPTION
45(6057)	747283.908	7943659.893	3/4" IPFD
46(6055)	747350.213	7943739.122	5/8" IRFD
53(6070)	747314.624	7944421.253	IRFD WITH CAP L.S. 60051
55(6063)	747166.411	7943893.429	IRFD WITH CAP L.S. 60051
56(4848)	747065.152	7943816.176	IRFD WITH CAP L.S. 60051
57(6064)	746987.760	7943900.806	IRFD WITH CAP L.S. 60051
58(6060)	747256.929	7943895.122	IRFD (BENT, SHOT AT BEND)
59(6058)	747330.994	7943806.428	RRSPIKE FOUND
60(6059)	747297.553	7943805.912	IRFD
61(6062)	747168.035	7943803.348	3/4" IPFD
62(6066)	746895.629	7944066.294	IRFD
63(6068)	746874.218	7944409.398	IPFD
64(4871)	746857.766	7944755.030	IRFD (REFERENCE)
68(6069)	746846.290	7944391.390	ALUMCAP FD
69(6067)	746860.743	7944172.288	ALUMCAP FD
70(6065)	746976.472	7943891.011	ALUMCAP FD
71(6061)	747187.050	7943648.113	ALUMCAP FD
75(6039)	747078.354	7943579.526	IRFD ODOT
173(6076)	746378.820	7945014.620	BCFD

PAGE 4--CALCULATED MONUMENTS

POINT	NORTHING	EASTING	DESCRIPTION
174(3046)	746370.009	7945211.163	N.S.W. DLC#40
193(15660)	747263.500	7943635.820	TL400
194(15661)	747240.658	7943621.744	TL400
195(15663)	746893.868	7944094.505	TL7700
196(15664)	746887.787	7944094.400	TL7700
197(15665)	746860.095	7944093.925	TL7700
198(15666)	746842.973	7944093.631	TL7700
199(15667)	746875.750	7944172.676	TL7700
200(15668)	746848.769	7944171.499	TL7700
201(15669)	746814.028	7944323.168	TL7700
202(15670)	746812.148	7944415.812	TL7700
203(15671)	746841.881	7944416.323	TL7700
204(15672)	746985.028	7944580.557	SE1/16
205(15673)	746987.751	7944861.696	MUSEUMSW
206(15674)	747087.747	7944860.727	MUSEUMNW
207(15675)	747088.715	7944960.722	MUSEUMNE
208(15676)	746988.720	7944961.691	MUSEUMSE
209(15677)	746715.505	7944830.933	SWDDOT
210(15678)	746794.220	7944992.623	SWDDOT
211(15679)	746694.221	7944992.117	SSWDDOT
212(15680)	746694.084	7945019.016	SSEDDOT
213(15681)	746722.204	7945019.408	NEDDOT
214(16662)	747169.994	7943687.234	TL 400/300
236(2971)	747423.372	7945907.008	NEDLC#40CLC
237(15683)	746997.830	7945902.114	S1/16
239(11100)	746093.520	7945208.718	CALC DLC CORNER
243(15696)	747427.257	7945227.907	NE VAUGHAN EXCEPTION.
247(15699)	748286.816	7944592.877	CE 1/16
248 (310)	748157.624	7944116.245	NE COR DLC #37
250(15694)	746972.731	7943259.423	CS 1/16
251(15700)	744470.027	7944090.567	POINT ON EAST LINE OF DLC #37
297(15710)	746989.315	7945023.133	CALCULATED NE CORNER OF GOVLOT 9
277(5014)	746594.005	7943792.811	NORTHERN R/W DWR&N RAILWAY.
276(5015)	746877.421	7943797.685	NORTH COMBS
274(5022)	747280.959	7943805.379	CALC R/W
273(15707)	747192.904	7943656.220	CALC R/W
277(15708)	747115.103	7943761.541	CALC R/W
282(15697)	745665.090	7944568.266	E 1/16

NOTE: NUMBERS IN PARENTHESIS ARE TERRA SURVEYING POINT NUMBERS

PAGE 5--SET MONUMENTS

POINT	NORTHING	EASTING	DESCRIPTION
214(7010)	746834.474	7945397.999	TL100&STATE
215(7011)	746943.864	7945399.525	TL100&STATE
216(7012)	746878.805	7945624.944	TL100&STATE
217(7013)	746876.016	7945660.568	TL100&STATE
218(7014)	747082.929	7946019.962	PORT/STATE
219(7015)	747060.587	7946000.920	PORT/STATE
220(7022)	747226.310	7946315.067	TL100/RWDDOT
221(7023)	747219.986	7946374.736	TL100/RWDDOT
291(7021)	746954.136	7945810.167	POINT ON R/W @ PC
292(15711)	747005.467	7945902.202	SE COR OF TL100
293(15712)	747010.714	7946343.450	POINT ON R/W
294(15713)	746981.670	7946367.192	POINT ON R/W

PAGE 5--FOUND MONUMENTS

POINT	NORTHING	EASTING	DESCRIPTION
87(3003)	747214.132	7946377.956	IRFD L.S. #385
88(3006)	746996.363	7946340.442	IRFD L.S. #385
89(3005)	746964.811	7946365.244	IRFD L.S. #385
90(3015)	745677.924	7945886.367	BCFD
68(6072)	746508.230	7945877.581	2' ALUMCAP FOUND.
66(6073)	747008.611	7946155.106	3' BCAP FOUND, REFERENCE MONUMENT
(67)6074	746790.452	7945573.791	IRFD ODOT
(65)6075	747130.282	7946170.025	3' BCAP FOUND, REFERENCE MONUMENT

PAGE 5--CALCULATED MONUMENTS

POINT	NORTHING	EASTING	DESCRIPTION
222(2969)	748267.350	7945916.989	DEED>SHORE
223(2970)	747591.788	7945909.141	SEC/MEANDER
225(3049)	746426.428	7945492.371	PDB33@317
226(15682)	746372.887	7945491.624	DEEDCOR
227(15683)	746997.830	7945902.114	S1/16
228(15684)	746851.744	7945970.587	DEED
229(15685)	746965.757	7946182.151	DEED
230(15686)	747058.611	7946405.174	DEED
231(3046)	746378.35	7945212.60	DLC INT. COR
288(3097)	747452.384	7946370.202	CALC N. COR OF PORT FROM COUNTY
290(15714)	747065.230	7946526.994	R/W

HOOD RIVER COUNTY  
SURVEYOR'S OFFICE

CS# 2008 036

DATE FILED: 5/1/08

BY: *Rebecca J. Holt*

INDEX:

- PAGE 1. TITLE AND NARRATIVE
- PAGE 2. MATCHLINE A
- PAGE 3. MATCHLINE B
- PAGE 4. MATCHLINE C
- PAGE 5. END OF SURVEY
- PAGE 6. REFERENCES, CORNER NOTES, CURVE AND LINE TABLE.
- PAGE 7. COORDINATE TABLES
- PAGE 8. COORDINATE TABLES
- PAGE 9. SHAPE KEY
- PAGE 10. CONTROL MAP AND BASIS OF BEARING.

LEGEND:

- IRFD = IRON ROD FOUND.
- IPFD = IRON PIPE FOUND.
- RRSPIKE = RAIL ROAD SPIKE FOUND.
- BCFD = BRASS CAP FOUND.
- ALUMCAPFD = ALUMINUM CAP FOUND.

REGISTERED  
PROFESSIONAL  
LAND SURVEYOR

*Eric M. Carlson*

OREGON  
DECEMBER 30, 2005  
ERIK M. CARLSON  
72306

Expires DECEMBER, 2009

TERRA SURVEYING

DATE: APRIL 15, 2008  
SCALE: 1" = 100'  
PROJECT: 207012  
ASSESSORS MAP: 3N 10 25  
P.O. BOX 617  
HOOD RIVER, OREGON 97031  
PHONE & FAX: (541) 386-4531  
terra@gorge.net

OREGON DEPARTMENT OF TRANSPORTATION  
COORDINATE TABLES  
FRONTAGE ROAD CROSSING SURVEY PROJECT  
HOOD RIVER COUNTY

ODOT REGION 1 SURVEY GROUP  
123 NW FLANDERS  
PORTLAND, OR 97209-4037  
O.D.O.T. CONTRACT NO. 26542

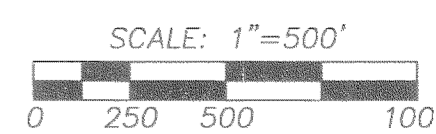
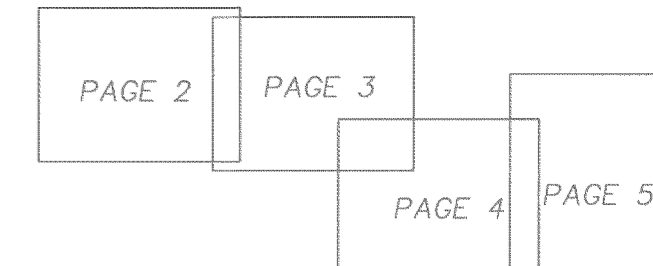
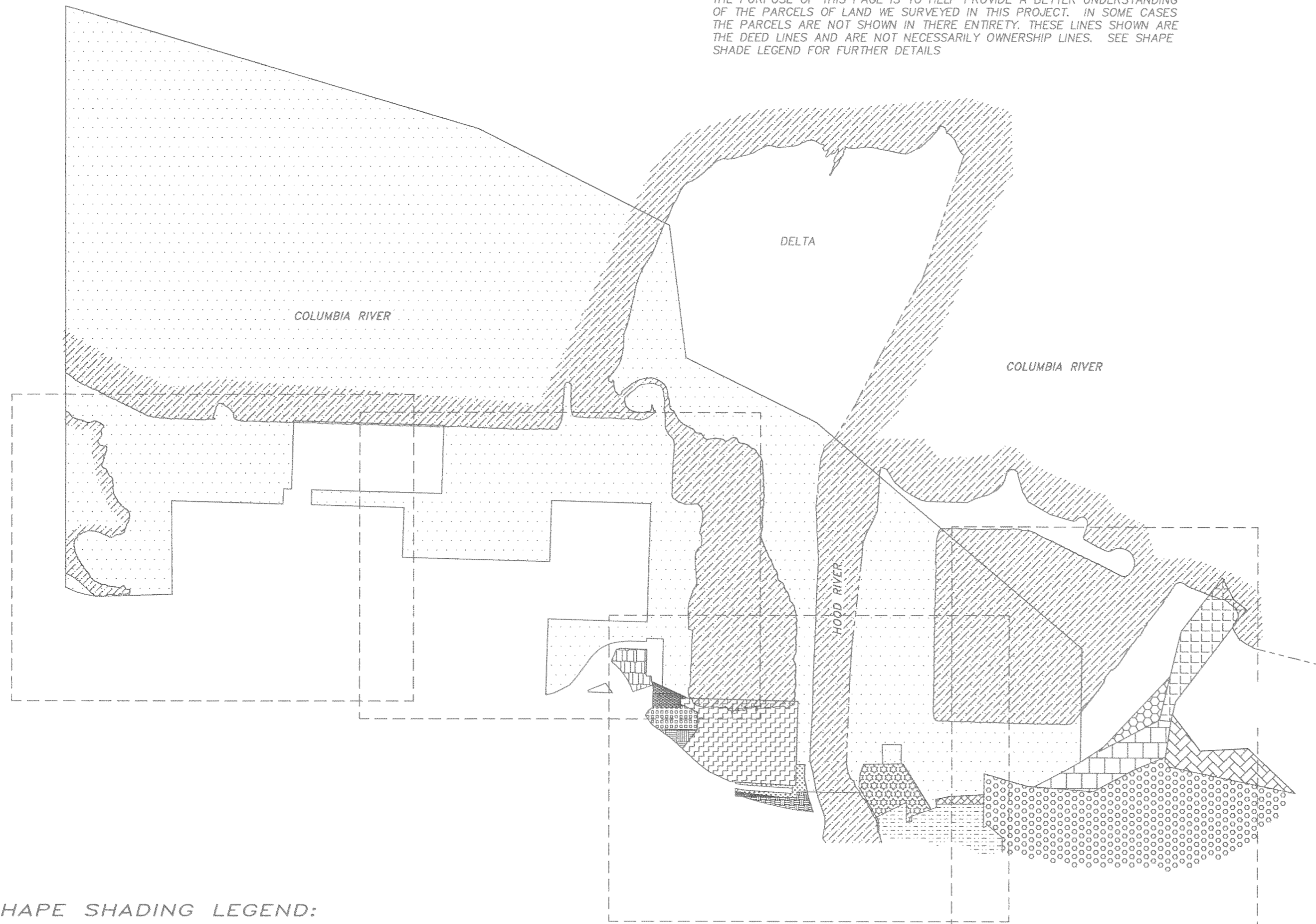
APRIL 15, 2008  
SCALE 1"=100'  
SHEET 8 OF 10

OS 2008 036 - 8



**NOTE:**

THE PURPOSE OF THIS PAGE IS TO HELP PROVIDE A BETTER UNDERSTANDING OF THE PARCELS OF LAND WE SURVEYED IN THIS PROJECT. IN SOME CASES THE PARCELS ARE NOT SHOWN IN THEIR ENTIRETY. THESE LINES SHOWN ARE THE DEED LINES AND ARE NOT NECESSARILY OWNERSHIP LINES. SEE SHAPE SHADE LEGEND FOR FURTHER DETAILS



**INDEX:**

- PAGE 1. TITLE AND NARRATIVE
- PAGE 2. MATCHLINE A
- PAGE 3. MATCHLINE B
- PAGE 4. MATCHLINE C
- PAGE 5. END OF SURVEY
- PAGE 6. REFERENCES, CORNER NOTES, CURVE AND LINE TABLE.
- PAGE 7. COORDINATE TABLES
- PAGE 8. COORDINATE TABLES
- PAGE 9. SHAPE KEY
- PAGE 10. CONTROL MAP AND BASIS OF BEARING.

**SHAPE SHADING LEGEND:**

	PARCEL 1 OF HOOD RIVER COUNTY PARTITION PLAT 2005-26P. (TAX LOT 100) ORIGINALLY DEEDED FROM THE OREGON LUMBER COMPANY TO THE PORT OF HOOD RIVER AS TRACT 2 OF HOOD RIVER COUNTY RECORDS BOOK 54, PAGE 537.		PARCEL 2 OF PARCEL 1 IN DEED BOOK 49, PAGE 310 OF HOOD RIVER COUNTY RECORDS, JANUARY 14, 1953. TO THE STATE HIGHWAY COMMISSION.		WATER
	RIGHT OF WAY FILE #14912, DEED BOOK 69, PAGE 577, DEED TO PORT OF HOOD RIVER FROM THE STATE HIGHWAY COMMISSION.		HOOD RIVER COUNTY INSTRUMENT # 970715, BOOK 34, PAGE 336, BOOK 51, PAGE 206. DEEDED TO HOOD RIVER. (TL. 500)		
	PARCEL 2 DESCRIBED IN BOOK 48, PAGE 265 IN HOOD RIVER RECORDS. DEED FROM THE OREGON LUMBER COMPANY TO THE STATE HIGHWAY COMMISSION.		HOOD RIVER COUNTY DEED #984487 (TL. 400) DATED OCTOBER 8TH 1998		
	HOOD RIVER COUNTY DEED BOOK 17, PAGE 580. FROM THE OREGON LUMBER COMPANY TO THE OREGON-WASHINGTON BRIDGE COMPANY.		HOOD RIVER COUNTY RECORDS, VOL 47, PAGE 214. TO THE STATE HIGHWAY COMMISSION.		
	HOOD RIVER COUNTY DEED BOOK 54, PAGE 537. DEED FROM HOOD RIVER COUNTY TO THE PORT OF HOOD RIVER.		PARCEL 1, PORT OF HOOD RIVER TO O.D.O.T. R/W INSTRUMENT #22857, SLOPE EASEMENT.		
	PARCEL 1 IN OREGON DEPARTMENT OF TRANSPORTATION (O.D.O.T) RIGHT OF WAY RECORDS #16684, DATED FEBRUARY 11, 1952.		HOOD RIVER COUNTY DEED #952850 (TL. 300) DATED OCTOBER 4TH 1995		
	HOOD RIVER COUNTY SURVEY #2005-058.		HOOD RIVER COUNTY SURVEY #97068, CORRECTION DEED #973741. O.D.O.T. TO THE PORT OF HOOD RIVER.		
	HOOD RIVER DEED BOOK 33, PAGE 317. DEED FROM THE UNITED STATES OF AMERICA TO THE STATE HIGHWAY COMMISSION.		HOOD RIVER COUNTY INSTRUMENT #890675 (TL. 1000).		
	HOOD RIVER COUNTY DEED BOOK 29, PAGE 547. DEED TO PORT CALLS OUT GOVERNMENT LOT 8 LYING NORTH OF HIGHWAY RIGHT OF WAY.		PARCEL 2 OF O.D.O.T RIGHT OF WAY FILE NO. 22856, DATED SEPTEMBER 7, 1961.		

**TERRA SURVEYING**

REGISTERED  
PROFESSIONAL  
LAND SURVEYOR

*Erik M. Carlson*

OREGON  
DECEMBER 30, 2005  
ERIK M. CARLSON  
72306

Expires: December 31, 2009

DATE: APRIL 15, 2008  
SCALE: 1" = 500'  
PROJECT: 207012  
ASSESSORS MAP: 3N 10 25

P.O. BOX 617  
HOOD RIVER, OREGON 97031  
PHONE & FAX: (541) 386-4531  
terra@gorge.net

OREGON DEPARTMENT OF TRANSPORTATION  
SHAPE MAP  
TAX LOT 100 BOUNDARY SURVEY  
FRONTAGE ROAD CROSSING SURVEY PROJECT  
HOOD RIVER COUNTY

ODOT REGION 1 SURVEY GROUP  
123 NW FLANDERS  
PORTLAND, OR 97209-4037  
O.D.O.T. CONTRACT NO. 26542

APRIL 15, 2008  
SCALE 1" = 500"  
SHEET 9 OF 10

SEC. 25 T.3 N. R.10 E. W.M.

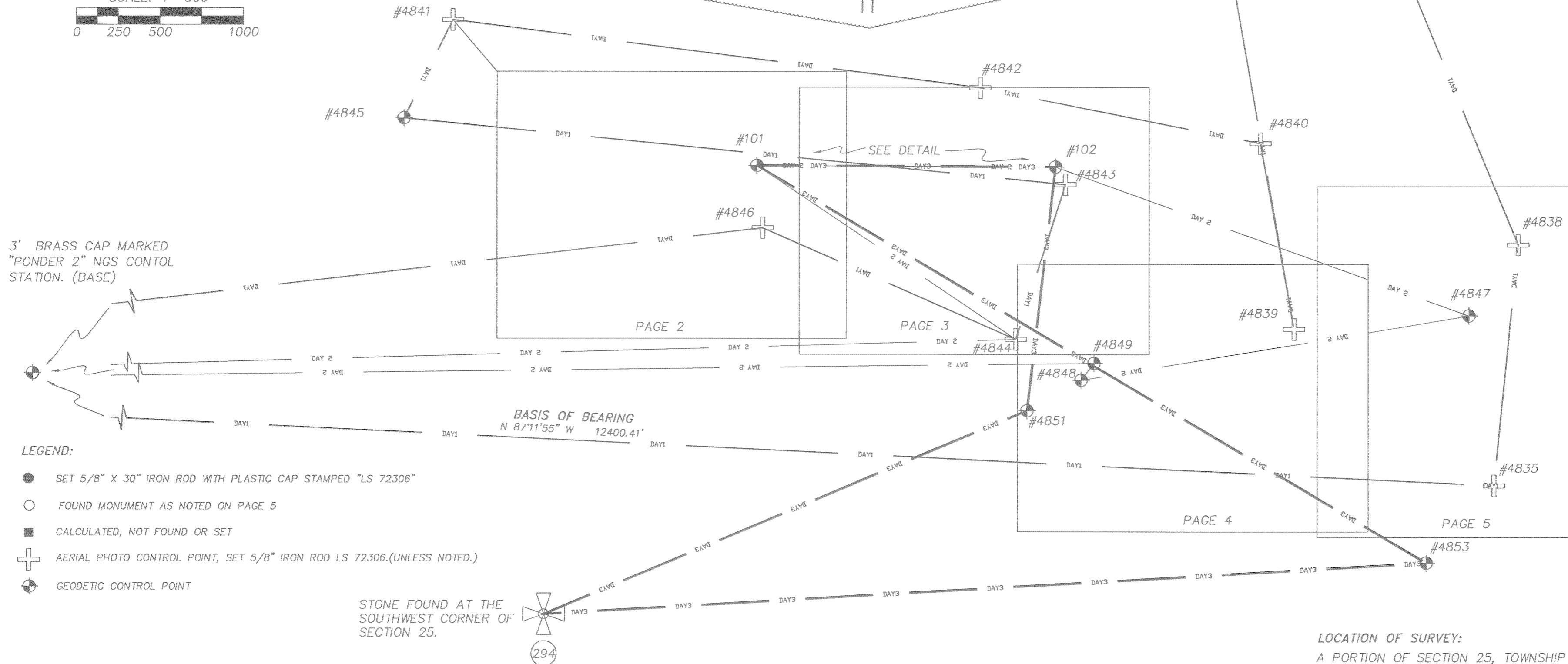
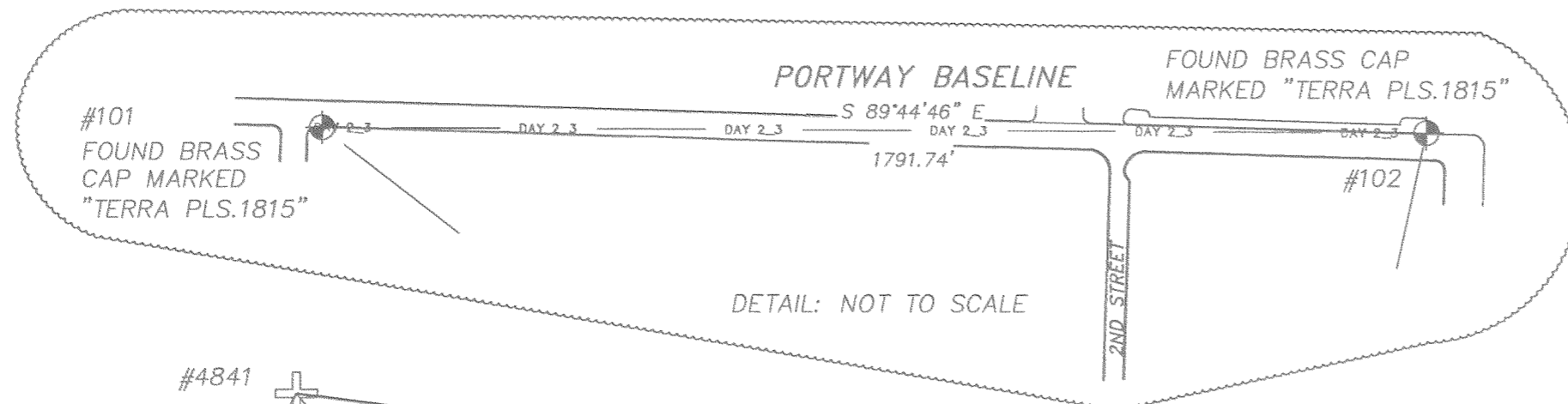
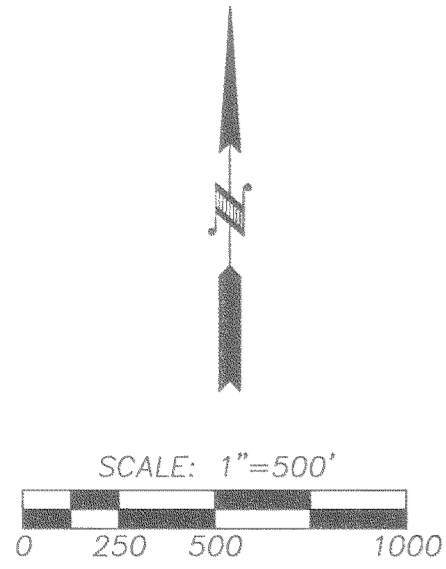
HOOD RIVER COUNTY  
SURVEYOR'S OFFICE

CS# 2008 036

DATE FILED: 5/1/08

BY: *Ronald J. Jants*

INDEX:  
PAGE 1. TITLE AND NARRATIVE  
PAGE 2. MATCHLINE A  
PAGE 3. MATCHLINE B  
PAGE 4. MATCHLINE C  
PAGE 5. END OF SURVEY  
PAGE 6. REFERENCES, CORNER NOTES, CURVE AND LINE TABLE.  
PAGE 7. COORDINATE TABLES  
PAGE 8. COORDINATE TABLES  
PAGE 9. SHAPE KEY  
PAGE 10. CONTROL MAP AND BASIS OF BEARING.



LEGEND:

- SET 5/8" X 30" IRON ROD WITH PLASTIC CAP STAMPED "LS 72306"
- FOUND MONUMENT AS NOTED ON PAGE 5
- CALCULATED, NOT FOUND OR SET
- ⊕ AERIAL PHOTO CONTROL POINT, SET 5/8" IRON ROD LS 72306.(UNLESS NOTED.)
- ⊙ GEODETIC CONTROL POINT

STONE FOUND AT THE  
SOUTHWEST CORNER OF  
SECTION 25.



POINT	NORTHING	EASTING	ELEVATION	DESCRIPTION
BASE	747040.573	7933902.423	336.74	3" BRASS CAP "PONDER2" PID: RC1674
101	748347.521	7941871.299	*94.67	BRASS CAP IN CURB (WEST PORTWAY)
102	748339.579	7943663.024	93.14	BRASS CAP IN CURB (EAST PORTWAY)
4835	746434.513	7946288.012	*101.80	5/8" IRON ROD LS.72306 (BERM)
4836	749953.704	7945573.099	78.76	5/8" IRON ROD LS.72306 (NE S.BAR)
4837	750016.997	7944624.785	80.04	5/8" IRON ROD LS.72306 (NW S.BAR)
4838	747874.212	7946432.516	91.78	5/8" IRON ROD LS.72306 (MARINA)
4839	747369.748	7945089.301	*89.66	5/8" IRON ROD LS.72306 (NEAR SLIP)
4840	748481.239	7944888.484	*89.50	5/8" IRON ROD LS.72306 (BEACON)
4841	749221.621	7940046.388	*94.05	5/8" IRON ROD LS.72306 (HOOK)
4842	748814.234	7943211.529	*81.59	5/8" IRON ROD LS.72306 (LUHR)
4843	748233.908	7943722.607	*94.15	5/8" IRON ROD LS.72306 (EVENT)
4844	747307.396	7943409.030	*99.97	5/8" IRON ROD LS.72306 (RAMP)
4845	748631.854	7939753.079	*91.55	60D NAIL SET IN PARKING @ HOOK
4846	747973.978	7941905.772	*93.97	5/8" IRON ROD LS.72306 (HRD)
4847	747450.367	7946137.353	*89.32	MAG NAIL (MARINA PARKING AREA)
4848	747065.152	7943816.176	95.86	IRON ROD FOUND LS.#60051
4849	747166.291	7943893.333	86.64	IRON ROD FOUND LS.#60051
4850	N/A	N/A	N/A	N/A
4851	746882.585	7943493.060	126.42	CUT "X" IN CONCRETE.
294(4852)	745663.076	7940593.200	355.87	STONE @ SW SEC25
4853	745971.959	7945881.981	154.11	HUB AND TACK

\*ELEVATIONS SHOWN WERE ADJUSTED BY RUNNING A CLOSED DIFFERENTIAL LEVEL LOOP.  
HOLDING POINT #4847. THIS POSITION WAS OBSERVED ON SEVERAL OCCASIONS WITH PONDER2  
HELD AS BASE.

BASIS OF BEARING:

U.S.G.S STATION PONDER-2  
N.A.V.D 1983 (1998 ADJUSTMENT)  
LATITUDE = 45°42'39.37105" (N)  
LONGITUDE = 121°32'59.76083" (W)  
ORTHOMETRIC HEIGHT OF 102.638 METERS  
(336.74')  
N.A.V.D. 1988 USING THE 1999 GEOID FOR  
THE U.S.

BASIS OF BEARING OF THE SURVEY IS  
OREGON STATE PLANE,  
NORTH ZONE (3601), GRID BEARINGS &  
INTERNATIONAL FEET.

ACCURACY STATEMENT:  
HORIZONTAL ACCURACY 0.02' + 1PPM  
VERTICAL ACCURACY 0.049' + 2PPM  
COORDINATE SHOWN ARE IN  
INTERNATIONAL FEET.

LOCATION OF SURVEY:

A PORTION OF SECTION 25, TOWNSHIP 3 NORTH,  
RANGE 10 EAST AND A PORTION OF SECTION 30,  
TOWNSHIP 3 NORTH, RANGE 11 EAST WILLAMETTE  
MERIDIAN, HOOD RIVER COUNTY, OREGON.

REGISTERED  
PROFESSIONAL  
LAND SURVEYOR

*Erik M. Carlson*

OREGON  
December 30, 2005  
ERIK M. CARLSON  
72306

Expires: December, 2009

TERRA SURVEYING

DATE: APRIL 15, 2008  
PROJECT: 207012  
ASSESSORS MAP: 3N 10 25  
P.O. BOX 617  
HOOD RIVER, OREGON 97031  
PHONE & FAX: (541) 386-4531  
terra@gorge.net

OREGON DEPARTMENT OF TRANSPORTATION  
AERIAL PHOTO & CONTROL NETWORK MAP  
FRONTAGE ROAD CROSSING SURVEY PROJECT  
HOOD RIVER COUNTY

ODOT REGION 1 SURVEY GROUP  
123 NW FLANDERS  
PORTLAND, OR 97209-4037  
O.D.O.T. CONTRACT NO. 26542

APRIL 15, 2008  
SCALE 1"=500'  
SHEET 10 OF 10

CS 2008 036-10