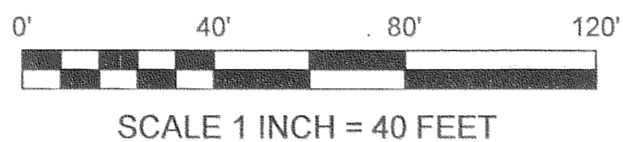


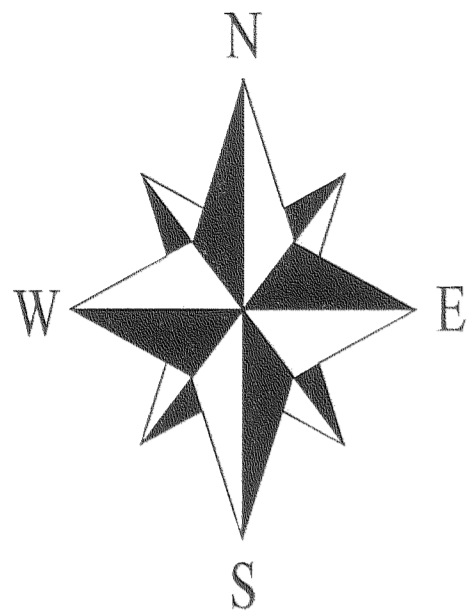
PROPERTY BOUNDARY SURVEY FOR STEVEN & HOLLY GRACE
LOT 11, BLOCK 2, PARK ADDITION TO THE CITY OF HOOD RIVER
 LOCATED IN THE NW 1/4 OF THE NW 1/4 OF SECTION 36, TOWNSHIP 3 NORTH, RANGE 10 EAST W.M.
 CITY OF HOOD RIVER, HOOD RIVER COUNTY, OREGON.

TAX LOT 12700, 3N-10E-36BB

NOVEMBER 20 2007



HOOD RIVER COUNTY
 SURVEYOR'S OFFICE
 Survey No: **CS 2008 006**
 Filed Date: **2-14-08**
 By: *Benjamin J. Cross*



REGISTERED
 PROFESSIONAL
 LAND SURVEYOR

 OREGON
 JANUARY 15, 2002
 BRADLEY J. CROSS
 60051

RENEWAL DATE: 12/31/2009

BASIS OF BEARINGS:

C.S.#2002040, HOOD RIVER COUNTY SURVEYORS OFFICE.

NARRATIVE:

THE PURPOSE OF THIS SURVEY IS TO VERIFY AND MONUMENT THE PROPERTY BOUNDARY OF TAX LOT 12700 OF HOOD RIVER COUNTY ASSESSORS MAP 03N-10E-36BB. TAX LOT 12700 IS DESCRIBED BY AMERITITLE PRELIMINARY TITLE REPORT #1, TITLE NUMBER 038362, DATED OCTOBER 26, 2007 & BY STATUTORY WARRANTY DEED DOCUMENT No.20062585 AS LOT 11, BLOCK 2, PARK ADDITION TO THE CITY OF HOOD RIVER.

I FOUND WHAT APPEAR TO BE ORIGINAL MONUMENTS FROM THE SUBDIVISION PLAT OF PARK ADDITION AT THE SOUTHEAST AND NORTHEAST CORNERS OF LOT 16, AND AT THE NORTHWEST CORNER OF LOT 9. C.S.#0804, DATED 1958 SHOWS IRON PIPES AT THE FOUR CORNERS OF LOT 12, OF WHICH I FOUND THE SOUTHERLY PIPES. THAT SURVEY DOES NOT SHOW IF THE PIPES WERE FOUND OR SET BUT THE MONUMENTS WERE ACCEPTED AS THEY CORRELATE WELL WITH OTHER FOUND MONUMENTS. THE MONUMENT FOUND AT THE NORTHWEST CORNER OF BLOCK 3 APPEARS TO HAVE BEEN SET BY C.S.#7649 AND DOES NOT CORRELATE VERY WELL TO MONUMENTS FOUND TO THE NORTH, BUT DOES CORRELATE WELL TO MONUMENTS FOUND TO THE EAST. I HELD THIS MONUMENT TO ESTABLISH THE WEST LINE OF BLOCK 2 AND HELD THE ORIGINAL PLAT DISTANCE OF 100' FOR THE WEST LINE OF LOT 9 TO ESTABLISH THE SOUTHWEST CORNER OF BLOCK 2, WHICH RESULTED IN A BETTER CORRELATION BETWEEN MONUMENTS FOUND AND SET EITHER SIDE OF PROSPECT AVENUE OFF THE SOUTHWEST CORNER OF LOT 11. I THEN PRORATED THE ORIGINAL PLAT DISTANCES BETWEEN THE ACCEPTED FOUND MONUMENTS AND THE CALCULATED SOUTHWEST CORNER OF BLOCK 2. I ALSO SHOW THE LOCATION OF THE LOTS IN THE NORTH HALF OF BLOCK 2 AS PRORATED FROM MONUMENTS FOUND AT THE SOUTHWEST AND SOUTHEAST CORNERS OF BLOCK 1. ADDITIONAL ADJACENT MONUMENTS FOUND ALSO CORRELATE WELL WITH THE POSITION OF BLOCK 2 AS ESTABLISHED BY THIS SURVEY.

REFERENCES:

- AMERITITLE PRELIMINARY TITLE REPORT #1, TITLE No.0038362, DATED OCTOBER 26, 2007.
- HOOD RIVER COUNTY DEED DOCUMENTS:
 STATUTORY WARRANTY DEED, RECORDED MAY 23, 2006, AS DOCUMENT No.20062585. (TAX LOT 12700).
 STATUTORY WARRANTY DEED, RECORDED APRIL 12, 2006, AS DOCUMENT No.20061875. (TAX LOT 12800).
 WARRANTY DEED, RECORDED JULY 18, 2003, AS DOCUMENT No.20034361. (TAX LOT 12701).
 WARRANTY DEED, RECORDED MAY 22, 1991, AS MICROFILM No.911218. (TAX LOT 12300).
 WARRANTY DEED, RECORDED FEBRUARY 8, 1957, AS DEED BOOK 59, PAGE 221. (TAX LOT 12400).
- SURVEYS FILED WITH HOOD RIVER COUNTY SURVEYORS OFFICE:
 SUBDIVISION PLAT OF PARK ADDITION TO THE CITY OF HOOD RIVER, DATED APRIL 1904.
 SUBDIVISION PLAT OF WAUCOMA PARK ADDITION TO THE CITY OF HOOD RIVER, DATED OCTOBER 1900.
 SUBDIVISION PLAT OF HOOD RIVER PROPER, DATED APRIL 1890.
 C.S.#2006022, FILED MARCH 21, 2006. (PARTITION PLAT 200606P).
 C.S.#2003077, FILED NOVEMBER 25, 2003. (PARTITION PLAT 200324P).
 C.S.#2002040, FILED JUNE 27, 2002.
 C.S.#2001078, FILED OCTOBER 23, 2001.
 C.S.#97056, FILED SEPTEMBER 24, 1997.
 C.S.#96031, FILED MAY 17, 1996.
 C.S.#92053, FILED JULY 17, 1992.
 C.S.#87070, FILED NOVEMBER 10, 1987.
 C.S.#87018, FILED APRIL 7, 1987.
 C.S.#85004, FILED JANUARY 18, 1985.
 C.S.#80019, FILED APRIL 7, 1980.
 C.S.#77030, FILED MARCH 28, 1977.
 C.S.#7649, FILED OCTOBER 14, 1976.
 C.S.#0818, DATED JANUARY 24, 1958.
 C.S.#0804, DATED APRIL 24, 1958.

BUILDING RESTRICTIONS:

THE PRELIMINARY TITLE REPORT FOR TAX LOT 12700 NOTES BUILDING RESTRICTIONS AND CONDITIONS CONTAINED IN DEED DOCUMENT No.20062585. THE RESTRICTIONS RELATE TO THE TYPE OF STRUCTURE THAT MAY BE BUILT ON THE PROPERTY AND A RESTRICTION THAT IT CANNOT BE PLACED WITHIN THE WEST 8 FEET.

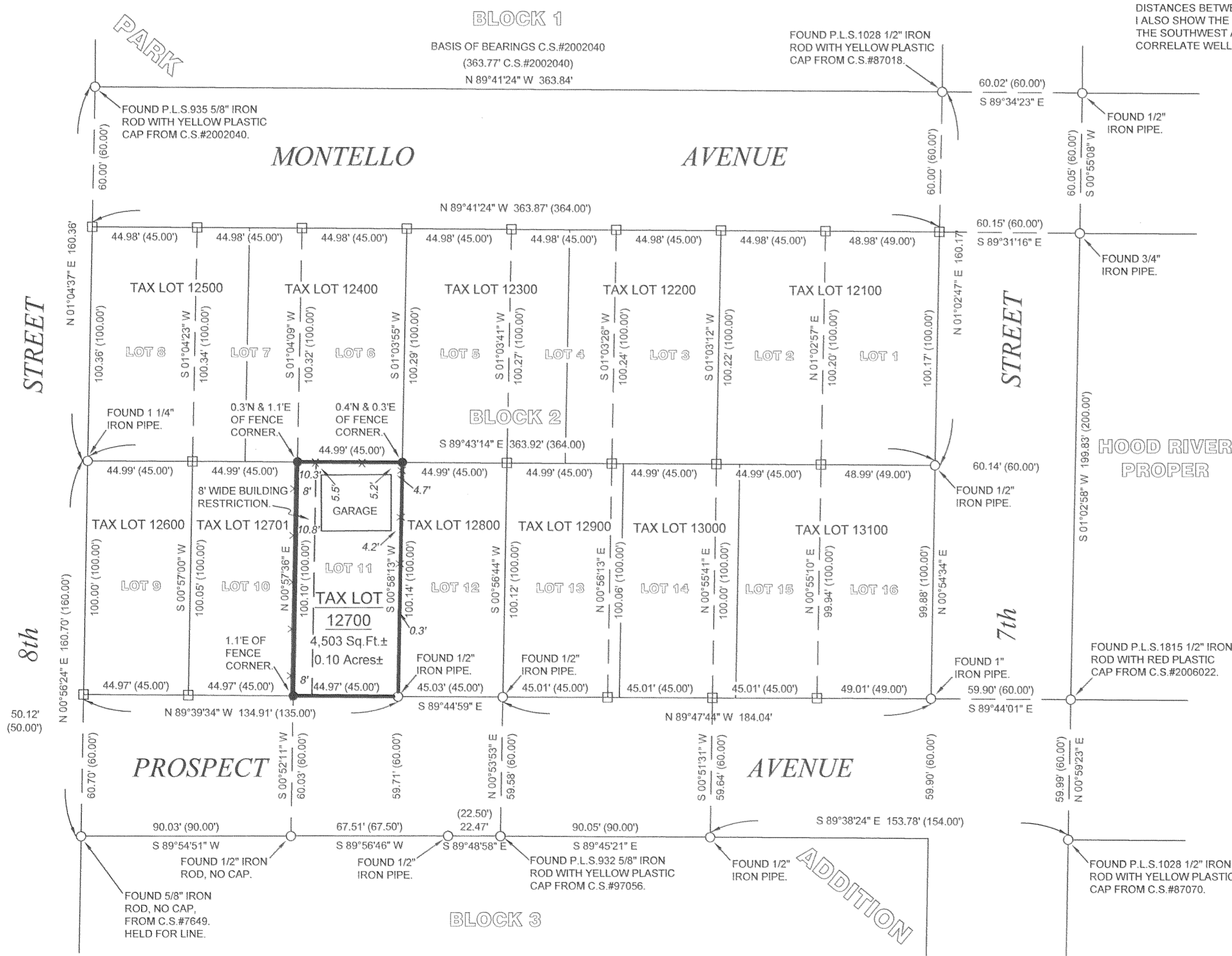
SYMBOL LEGEND:

- SET 5/8" X 30" IRON ROD WITH ORANGE PLASTIC CAP INSCRIBED "CROSS P.L.S. 60051".
- FOUND MONUMENT OF RECORD AS NOTED
- CALCULATED CORNER, NOT FOUND OR SET
- (50.00') ORIGINAL PLAT DISTANCE
- 9.2' OFFSET DISTANCE
- FENCE LINE

PROJECT NUMBER: 2007043.
 DATE OF SURVEY MONUMENTATION: NOVEMBER 20, 2007.
 DATE OF DRAWING: DECEMBER 5, 2007.
 HOOD RIVER COUNTY ASSESSORS MAP: 03N-10E-36BB.

**COLUMBIA RIVER
 SURVEYING
 & MAPPING**

216 CASCADE AVE, SUITE 23
 HOOD RIVER, OREGON, 97031
 PHONE/FAX: 541-386-9002
 EMAIL: INFO@COLUMBIASURVEYING.COM



WAUCOMA
 PARK
 ADDITION

HOOD RIVER
 PROPER

ADDITION