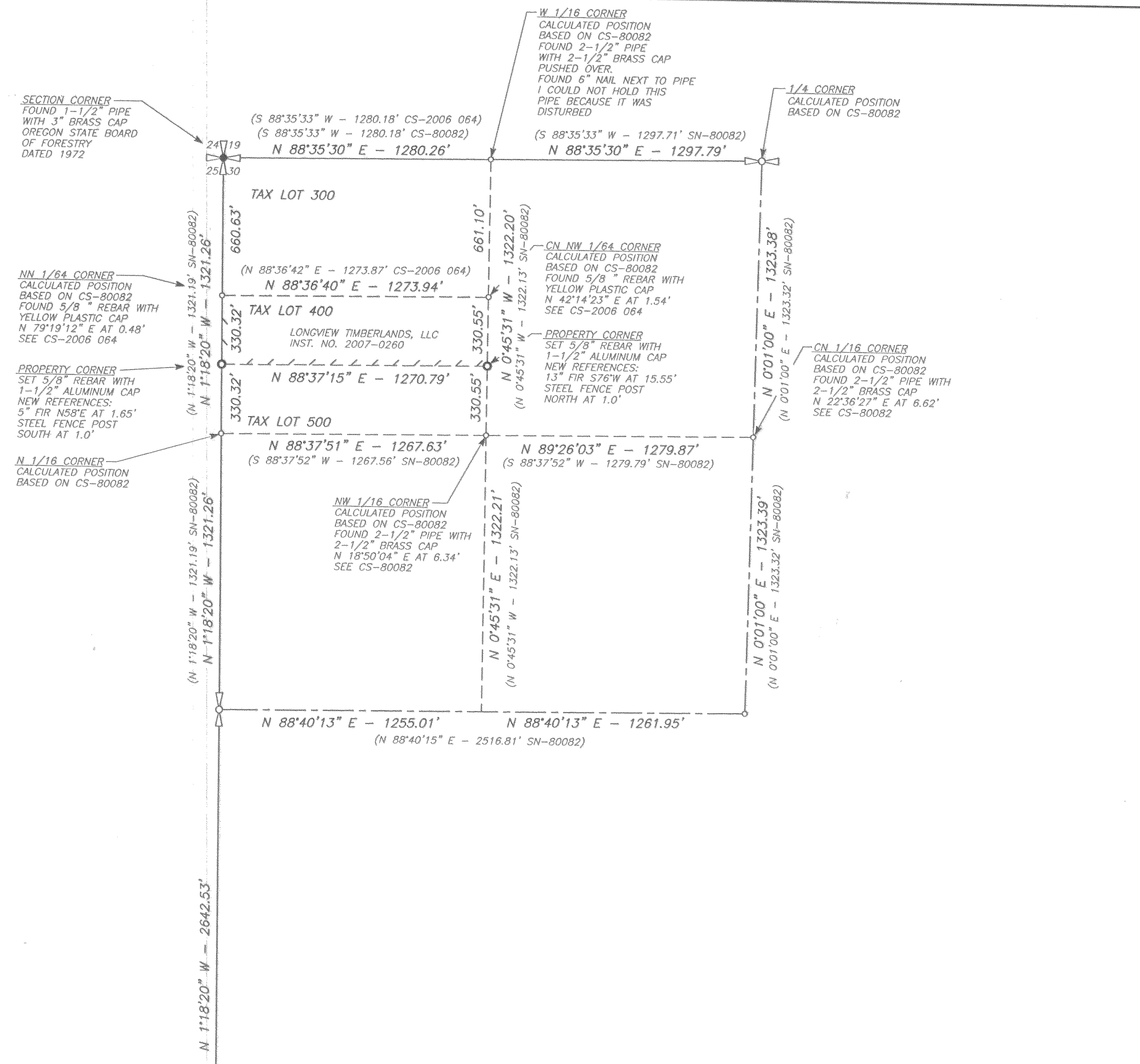
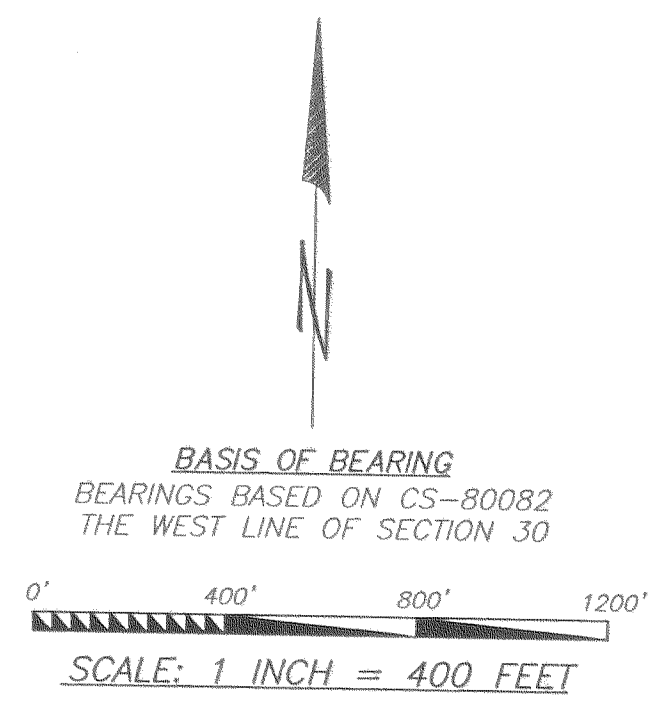


HOOD RIVER COUNTY
SURVEYOR'S OFFICE
SURVEY NO. **CS2007126**
FILED DATE: **12/10/07**
BY: *Paul Pubs*

RECORD OF SURVEY
FOR
LONGVIEW TIMBERLANDS, LLC
IN THE NW 1/4 OF THE NW 1/4 OF
SECTION 30, T 2 N, R 10 E, W.M.
HOOD RIVER COUNTY, OREGON

2N 10E 30 TAX LOT 400
AUGUST 27, 2007, MONUMENTATION DATE



LEGEND

- SECTION CORNER, 1/4 CORNER AS NOTED
- FOUND MONUMENT AS NOTED
- SET 5/8" X 30" REBAR WITH 1-1/2" ALUMINUM CAP STAMPED "PROP COR 2210"
- CALCULATED POSITION
- RECORD BEARING AND/OR DISTANCE AS NOTED
- LINE MARKED WITH 1/2" X 60" FIBER GLASS RODS RED AND WHITE RIBBON ON LINE BETWEEN RODS TREES ALONG LINE PAINTED WITH BLUE PAINT

NARRATIVE

THE PURPOSE OF THIS SURVEY WAS TO LOCATE THE SOUTH AND WEST LINES OF THE NORTH HALF OF THE SOUTH QUARTER OF THE NORTHWEST QUARTER OF THE NORTHWEST QUARTER OF SECTION 30. THIS SURVEY IS BASED ON PREVIOUS SURVEY CS-80082. THE NORTHWEST SECTION CORNER AND THE SOUTHWEST SECTION CORNER WERE HELD AS BASIS OF BEARING AND SECTION SUBDIVISION. GPS CONTROL POINTS WERE ESTABLISHED NEAR THE NORTHWEST SECTION CORNER, THE SOUTHWEST SECTION CORNER AND THE NORTHEAST CORNER OF SAID NORTH HALF. THE CENTER NORTH 1/16 CORNER WAS OCCUPIED WITH GPS RECEIVER. THE WEST 1/16 CORNER AND THE NORTHWEST 1/16 CORNER WERE TIED BY CLOSED TRAVERSE FROM THE GPS CONTROL. A TRAVERSE WAS RUN FROM GPS CONTROL ALONG THE SOUTH LINE OF SAID NORTH HALF AND CLOSED ON GPS CONTROL NEAR THE NORTHWEST SECTION CORNER. THIS SURVEY IS NOT BASED ON CORNERS HELD BY CS-2006-064. WHILE BOTH SURVEYS REPORT BASIS AS CS-80082 WE DO NOT AGREE ON CORNER POSITION. THE WEST 1/16 CORNER ESTABLISHED BY CS-80082 WAS DISTURBED AND NOT USABLE.

THIS MAP CORRECTLY REPRESENTS A SURVEY MADE BY ME AT THE REQUEST OF LONGVIEW TIMBER CORPORATION IN JULY 2007.

GEORGE J. FORD, PLS
CERTIFICATE NO. 2210

LONGVIEW TIMBER CORPORATION
PO BOX 667
LONGVIEW, WASHINGTON 98632
(360) 575-5108

REGISTERED
PROFESSIONAL
LAND SURVEYOR
George J. Ford
12/6/07
OREGON
JULY 17, 1986
GEORGE J. FORD
#2210
EXPIRATION DATE: 12/31/09

RECEIVED DEC 10 2007

DRAWN BY GEORGE FORD

CS 2007 126