

# RECORD OF SURVEY FOR LONGVIEW TIMBERLANDS, LLC IN THE NW 1/4 OF SEC. 7, T1N R11E, W.M. HOOD RIVER COUNTY, OREGON

HOOD RIVER COUNTY  
SURVEYOR'S OFFICE  
SURVEY NO. **CS 2007 116**  
FILED DATE: *November 30, 2007*  
BY: *Nathan Woodward*

BASIS OF BEARING  
BEARINGS BASED ON GPS CONTROL POINTS  
"DIAMOND" LAT. 45°37'41.49862"N  
LONG. 121°32'24.55478"W  
AND "HDR01"  
LAT. 45°33'00.96526"N LONG. 121°30'21.07618"W  
NAD 83(91) STATE PLANE COORDINATE SYSTEM  
-OREGON NORTH ZONE 3601-  
AT THE CW 1/16 OF SECTION 7  
THE CONVERGENCE ANGLE = -0°44'29.42470  
COMBINED SCALE FACTOR = .999820549

0 400 800  
SCALE: 1"=400'  
GRID DISTANCES SHOWN



## NARRATIVE

THE PURPOSE OF THIS SURVEY WAS TO LOCATE AND MARK LONGVIEW TIMBERLANDS, LLC PROPERTY LINES IN THE NORTHWEST QUARTER OF SECTION 7, T1N R11E, W.M. GPS CONTROL WAS ESTABLISHED USING LEICA 1200 SERIES RECEIVERS FROM CONTROL POINTS "DIAMOND" AND "HRC01". GPS CONTROL WAS SET NEAR THE SOUTHWEST SECTION CORNER AND THE CENTER SOUTH SIXTEENTH CORNER. THE NORTHWEST SECTION WAS DIRECTLY TIED WITH GPS.

A CLOSED TRAVERSE WAS RUN USING A LEICA TCR 1203 TOTAL STATION FROM GPS CONTROL TO THE SOUTHWEST SECTION CORNER. A CLOSED TRAVERSE WAS RUN FROM GPS CONTROL TO THE CENTER SOUTH SIXTEENTH, THENCE TO THE CENTER, THENCE WEST TO THE CENTER WEST SIXTEENTH, THENCE NORTH TO THE NORTHWEST SIXTEENTH, THENCE EAST TO THE CENTER NORTH SIXTEENTH, THENCE SOUTH TO GPS CONTROL.

THE NORTH QUARTER CORNER WAS FOUND BY DAN NEVIN IN REFERENCE SURVEY (A). I DID NOT FIND THIS CORNER IN MY SURVEY AND BELIEVE THAT IT WAS OBLITERATED IN THE CONSTRUCTION OF A LOGGING ROAD. TO PRESERVE THE LOCATION OF THE ORIGINAL QUARTER CORNER, I CALCULATED ITS POSITION BASED ON MR. NEVIN'S SURVEY. I SCALED AND ROTATED BASED ON THE SOUTHWEST AND NORTHWEST SECTION CORNER TIES.

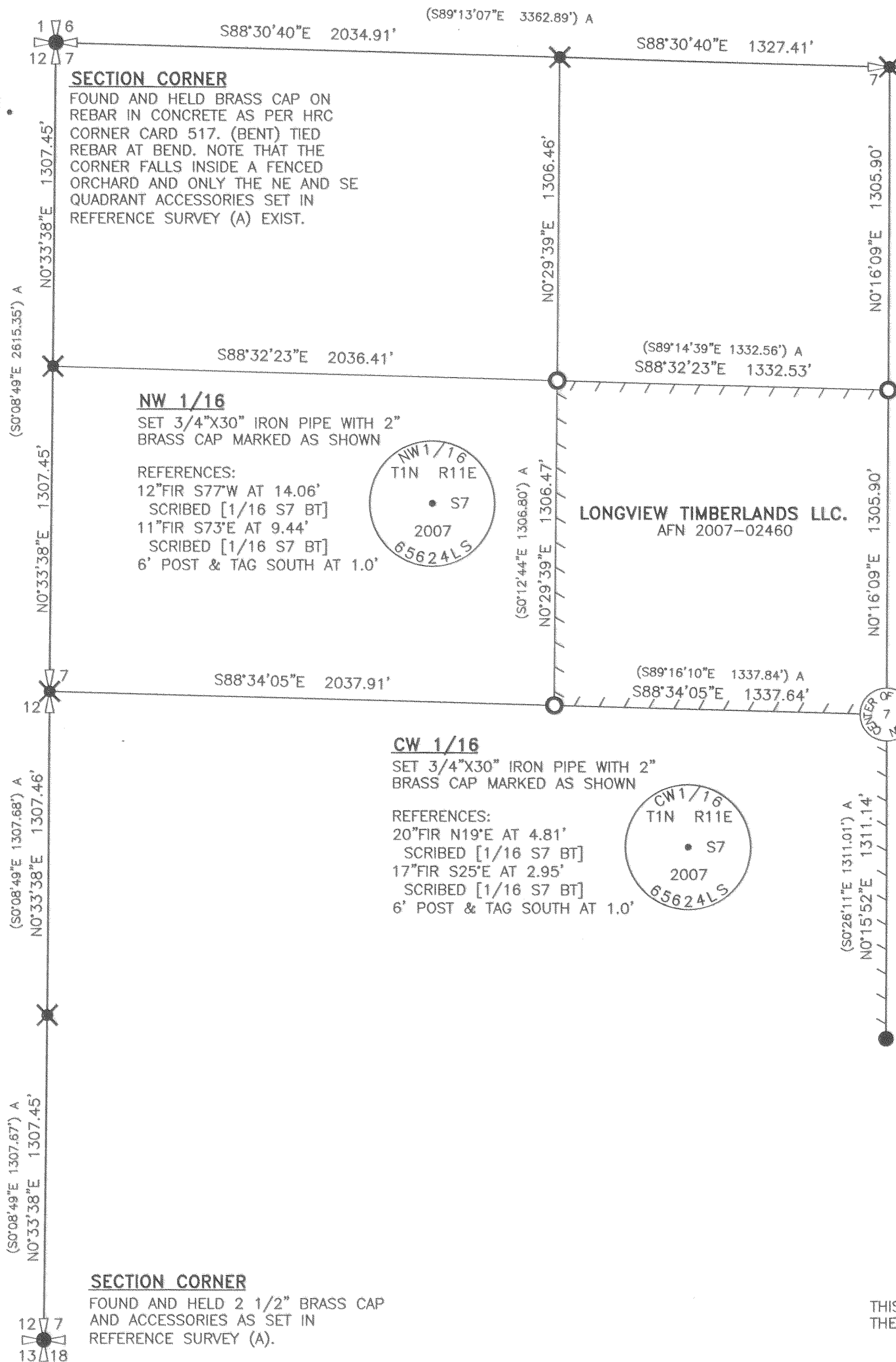
THE PARENTHETICAL DISTANCES FOR THE GOVERNMENT LOTS WHERE CALCULATED PRESERVING THE ACREAGE DOCUMENTED ON THE FACE OF THE GLO PLAT.

## REFERENCE SURVEYS

- A) 1984 SURVEY BY DAN J. NEVIN FOR CHAMPION INTERNATIONAL CORPORATION. HRC # 84010.  
GLO 1884 PLAT #2664 BASED ON HENRY MELDRUM FIELD NOTES

## LEGEND

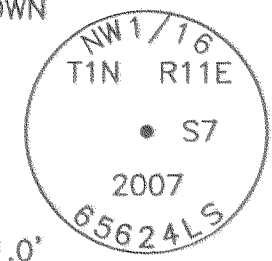
	SECTION CORNER
	QUARTER CORNER
	CALCULATED POSITION
	FOUND MONUMENT
	SET MONUMENT (FIRST MONUMENT SET 8/23/07)
	LINE MARKED WITH 1/2" x 72" FIBERGLASS RODS WITH RED AND WHITE FLAGGING BETWEEN RODS. TREES ALONG LINE PAINTED WITH BLUE PAINT
HRC	HOOD RIVER COUNTY
( )	RECORD BEARING AND/OR DISTANCE, AS NOTED



**SECTION CORNER**  
FOUND AND HELD BRASS CAP ON REBAR IN CONCRETE AS PER HRC CORNER CARD 517. (BENT) TIED REBAR AT BEND. NOTE THAT THE CORNER FALLS INSIDE A FENCED ORCHARD AND ONLY THE NE AND SE QUADRANT ACCESSORIES SET IN REFERENCE SURVEY (A) EXIST.

**NW 1/16**  
SET 3/4"x30" IRON PIPE WITH 2" BRASS CAP MARKED AS SHOWN

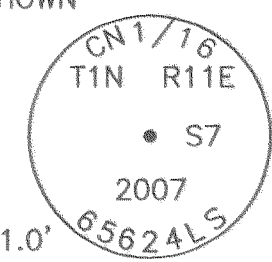
REFERENCES:  
12" FIR S77°W AT 14.06'  
SCRIBED [1/16 S7 BT]  
11" FIR S73°E AT 9.44'  
SCRIBED [1/16 S7 BT]  
6' POST & TAG SOUTH AT 1.0'



LONGVIEW TIMBERLANDS LLC.  
AFN 2007-02460

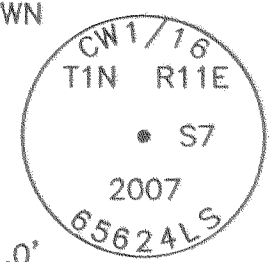
**CN 1/16**  
SET 3/4"x30" IRON PIPE WITH 2" BRASS CAP MARKED AS SHOWN

REFERENCES:  
5" OAK S51°E AT 10.98'  
SCRIBED [1/16 S7 BT]  
7" OAK N10°E AT 10.78'  
SCRIBED [1/16 S7 BT]  
6' POST & TAG WEST AT 1.0'



**CW 1/16**  
SET 3/4"x30" IRON PIPE WITH 2" BRASS CAP MARKED AS SHOWN

REFERENCES:  
20" FIR N19°E AT 4.81'  
SCRIBED [1/16 S7 BT]  
17" FIR S25°E AT 2.95'  
SCRIBED [1/16 S7 BT]  
6' POST & TAG SOUTH AT 1.0'



**CENTER SECTION CORNER**  
FOUND AND HELD 2 1/2" BRASS CAP AND ACCESSORIES AS PER REFERENCE SURVEY (A).

**CS 1/16**  
FOUND AND HELD 2 1/2" BRASS CAP AND ACCESSORIES AS PER REFERENCE SURVEY (A).  
NEW REFERENCES:  
6" FIR SOUTH AT 8.18' MARKED WITH 4 NOTCHES  
6' POST AND TAG NORTH AT 1.0'

**SECTION CORNER**  
FOUND AND HELD 2 1/2" BRASS CAP AND ACCESSORIES AS SET IN REFERENCE SURVEY (A).

**NOTE:**  
NEW REFERENCES HAVE AN 8" SPIKE AT THE BASE OF THE SCRIBE WITH A LOCATION TAG ABOVE THE SCRIBE, ALL ORIENTED TOWARD MONUMENT DISTANCES MEASURED TO SPIKE, BEARINGS TO REFERENCES TAKEN WITH HAND COMPASS HAVING A DECLINATION OF 21' EAST.

THIS MAP CORRECTLY REPRESENTS A SURVEY MADE UNDER MY DIRECTION AT THE REQUEST OF LONGVIEW TIMBERLANDS, LLC IN AUG. 2007.

NATHAN A. WOODWARD, PLS  
CERTIFICATE NO. 65624LS

LONGVIEW TIMBER CORPORATION  
10 INTERNATIONAL WAY  
LONGVIEW, WA 98632  
(360) 575-5111

REGISTERED  
PROFESSIONAL  
LAND SURVEYOR

*Nathan Woodward*  
OREGON  
JULY 12, 2005  
NATHAN A. WOODWARD  
65624LS

EXPIRATION DATE: 6/30/08

DRAWN BY: NATHAN WOODWARD

DATE: 10-1-07