

FILED

NOV 29 2007

Ray Galt
COUNTY SURVEYOR
CORCAAD 1187

CORNER RESTORATION REPORT

SECTION 16 & 17 TOWNSHIP 1 SOUTH RANGE 8 EAST
COUNTY HOOD RIVER DATE AUGUST 28, 2007

CORNER DESIGNATION:

SOUTHWEST CORNER OF SECTION 16.

CORNER STATUS / HISTORY:

THIS CORNER IS AN ORIGINAL G.L.O. CORNER.

THE CORNER WAS ESTABLISHED IN 1940 BY LEONARD CARTER, ASSISTANT CADASTRAL ENGINEER, WITH THE GENERAL LAND OFFICE. CARTER SET AN "IRON POST" WITH BRASS CAP FOR THE CORNER. HE MARKED TWO BEARING TREES FOR REFERENCES.

PREVIOUS RENEWALS / SURVEYS, ETC.:

G.L.O. FIELD NOTES - 1940 SURVEY.

MONUMENT(S) & ACCESSORIES FOUND:

- Ⓐ FOUND: 2" OUTSIDE DIAMETER IRON PIPE WITH 2-1/2" BRASS DISC, MARKED AS SHOWN BELOW (G.L.O. - 1940), RIVETED TO TOP OF PIPE, UP 1.6'. MONUMENT IS LOCATED IN A CUT BANK ON THE SOUTHWESTERLY SIDE OF THE PACIFIC CREST TRAIL.

MONUMENT SET:

HELD MONUMENT POSITION AND SET REFERENCES AS NOTED.

NEW ACCESSORIES:

[G.L.O. = GENERAL LAND OFFICE
YPC = YELLOW PLASTIC CAP MARKED "MULT. CO. SURVEY"]

- Ⓑ SET: 3/4" X 30" GALVANIZED IRON PIPE WITH YPC, DOWN 0.2'.
- Ⓒ SET: 3/4" X 30" GALVANIZED IRON PIPE WITH YPC, DOWN 0.2' IN TREAD OF PACIFIC CREST TRAIL.
- Ⓓ SET: 3/4" X 30" GALVANIZED IRON PIPE WITH YPC, DOWN 0.2'.
- Ⓔ SET: 3/4" X 30" GALVANIZED IRON PIPE WITH YPC, UP 0.3'.

LOCATION & COMMENTS:

APPROXIMATE CORNER LOCATION PER GARMIN ETREX VISTA HANDHELD G.P.S. RECEIVER IS LATITUDE: 45°28'36.5" NORTH, LONGITUDE: 121°50'39.4" WEST.

BOTH ORIGINAL BEARING TREES WERE SEARCHED FOR IN THE PRESENT SURVEY. A FIR TREE WAS FOUND AT THE APPROXIMATE LOCATION OF THE TREE DESCRIBED IN THE ORIGINAL NOTES AS "A WHITE FIR, 8 INS. DIAM., BEARS N39°E, 46 LKS DIST." THIS TREE IS LOCATED AT THE BASE OF A 20' HIGH CLIFF, AND IT WAS NOT PRACTICAL OR SAFE TO INSPECT OR MEASURE TO IT. NO EVIDENCE WAS FOUND OF THE TREE DESCRIBED IN THE ORIGINAL NOTES AS "A WHITE FIR, 25" DIAM., BEARS N62°E, 16 LKS. DIST."

BY:

MULTNOMAH COUNTY SURVEYOR'S OFFICE
1600 S.E. 190TH AVE.
PORTLAND, OR 97233

CREW:

OKELL, NICHOLLS, KAHSAY

FIELD BOOK:

CORNER BOOK 30, PAGE 60

EQUIPMENT:

SILVA RANGER COMPASS (MAGNETIC DECLINATION 21° EAST),
50' STEEL TAPE, CLINOMETER

SKETCH:

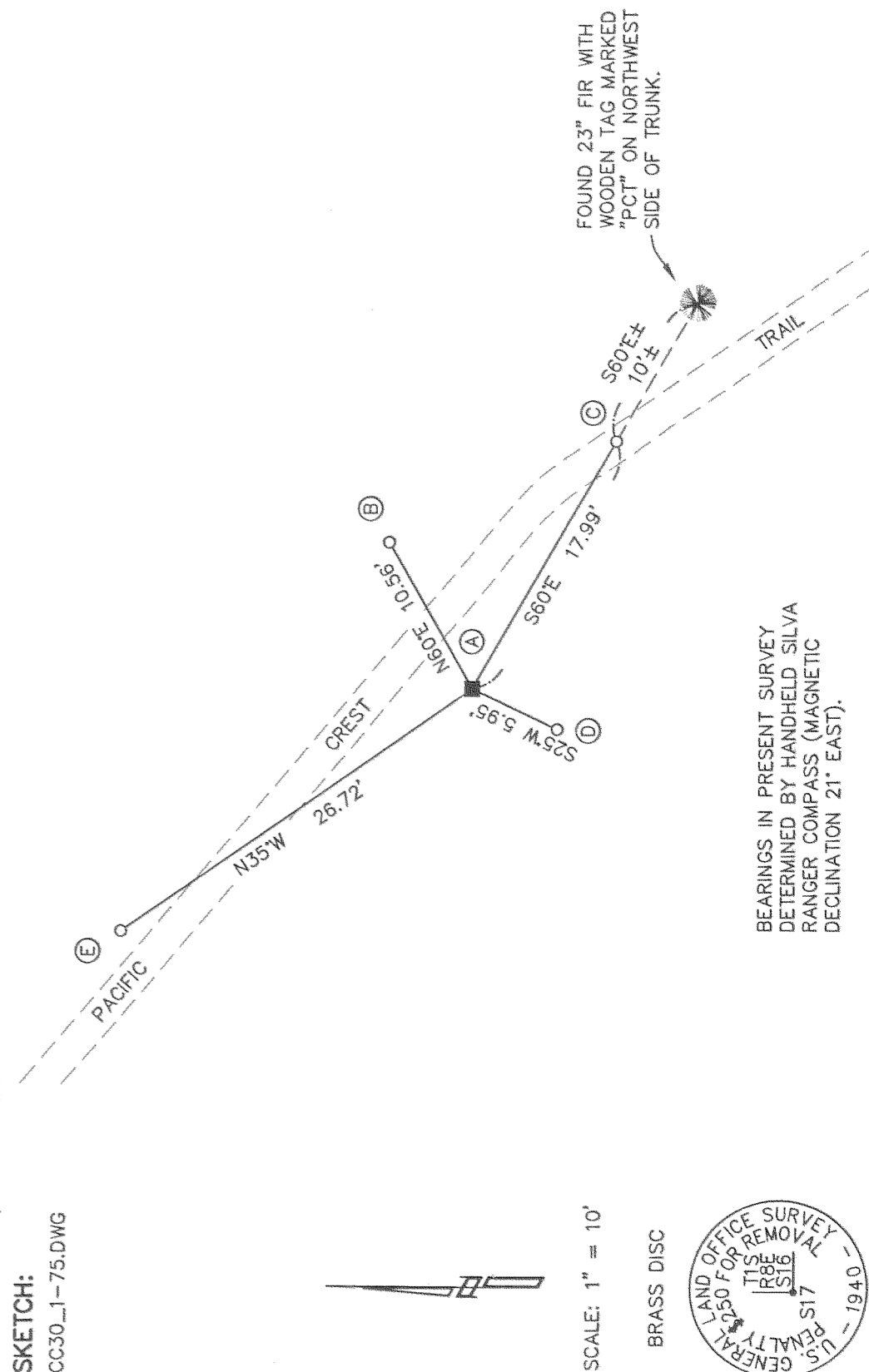
CC30_1-75.DWG

REGISTERED
PROFESSIONAL
LAND SURVEYOR

Robert A. Hovden

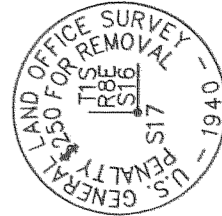
OREGON
JULY 16, 1971
ROBERT A. HOVDEN
954

RENEWAL DATE: 6/30/2009



SCALE: 1" = 10'

BRASS DISC



BEARINGS IN PRESENT SURVEY DETERMINED BY HANDHELD SILVA RANGER COMPASS (MAGNETIC DECLINATION 21° EAST).

CS 2007 111

CS 2007 111

RECEIVED OCT 11 2007