

FILED

NOV 29 2007

CONRAD 1186

Robert A. Hovden
REGISTERED PROFESSIONAL LAND SURVEYOR

DEPUTY

CORNER RESTORATION REPORT

SECTION 16, 17 & 21 TOWNSHIP 1 SOUTH RANGE 8 EAST
COUNTY HOOD RIVER DATE AUGUST 28, 2007

CORNER DESIGNATION:

CLOSING CORNER COMMON TO SECTIONS 16, 17 AND 21.

CORNER STATUS / HISTORY:

THIS CORNER IS AN ORIGINAL G.L.O. CORNER.

THE CORNER WAS ESTABLISHED IN 1940 BY LEONARD CARTER, ASSISTANT CADASTRAL ENGINEER, WITH THE GENERAL LAND OFFICE. CARTER SET AN "IRON POST" WITH BRASS CAP FOR THE CORNER. HE MARKED TWO BEARING TREES FOR REFERENCES.

PREVIOUS RENEWALS / SURVEYS, ETC.:

G.L.O. FIELD NOTES - 1940 SURVEY.

MONUMENT(S) & ACCESSORIES FOUND:

- Ⓐ FOUND: 2" OUTSIDE DIAMETER IRON PIPE WITH 2-1/2" BRASS DISC, MARKED AS SHOWN BELOW (G.L.O. - 1940), RIVETED TO TOP OF PIPE, IN A 3.0' DIAMETER, 1.5' HIGH MOUND OF STONES. PIPE WAS FOUND LEANING NORTHERLY AT A 45± ANGLE. THE MONUMENT WAS RESET IN THE PRESENT SURVEY, AS DESCRIBED BELOW UNDER MONUMENT SET.
- Ⓓ FOUND: 42" SNAG, 50± HIGH (40" WHITE FIR PER G.L.O.), WITH PARTLY OPEN FACE, SOME SCRIBING VISIBLE. CUT SMALL BLAZE INTO TRUNK BELOW G.L.O. FACE AND SET A "MAG" NAIL WITH 2" DIAMETER BRASS WASHER STAMPED "MULTNOMAH COUNTY SURVEYOR" IN BLAZE. DID NOT MEASURE DISTANCE TO NAIL. SET YELLOW LOCATION TAG ON TREE.
- Ⓔ FOUND: 49" FIR WITH HEALED FACE (47" WHITE FIR PER G.L.O.), CUT SMALL BLAZE INTO TRUNK BELOW G.L.O. FACE AND SET A "MAG" NAIL WITH 2" DIAMETER BRASS WASHER STAMPED "MULTNOMAH COUNTY SURVEYOR" IN BLAZE. DID NOT MEASURE DISTANCE TO NAIL. SET YELLOW LOCATION TAG ON TREE.

MONUMENT SET:

AS WAS NOTED ABOVE, THE CORNER MONUMENT WAS FOUND LEANING NORTHERLY. THE MONUMENT WAS RESET, HOLDING THE BOTTOM OF THE 2" IRON PIPE FOR THE CORNER POSITION. THE MONUMENT IS NOW FIRMLY SET IN A 3" DIAMETER, 1.5' MOUND OF STONES. THE BRASS DISC IS UP 1.2' ABOVE THE TOP OF THE STONE MOUND. BOTH ORIGINAL BEARING TREES WERE TIED AND FOUR IRON PIPE REFERENCES WERE SET.

NEW ACCESSORIES:

[G.L.O. = GENERAL LAND OFFICE
YPC = YELLOW PLASTIC CAP MARKED "MULT. CO. SURVEY"]

- Ⓑ SET: 3/4" X 30" GALVANIZED IRON PIPE WITH YPC, FLUSH.
- Ⓒ SET: 3/4" X 30" GALVANIZED IRON PIPE WITH YPC, FLUSH.
- Ⓓ SET: 3/4" X 30" GALVANIZED IRON PIPE WITH YPC, FLUSH.
- Ⓔ SET: 3/4" X 30" GALVANIZED IRON PIPE WITH YPC, UP 0.2'.

LOCATION & COMMENTS:

APPROXIMATE CORNER LOCATION PER GARMIN ETREX VISTA HANDHELD G.P.S. RECEIVER IS LATITUDE: 45°28'36.9" NORTH, LONGITUDE: 121°50'33.8" WEST.

BY:

MULTNOMAH COUNTY SURVEYOR'S OFFICE
1600 S.E. 190TH AVE.
PORTLAND, OR 97233

CREW:

OKELL, NICHOLLS, KAHSAY

FIELD BOOK:

CORNER BOOK 30, PAGE 59

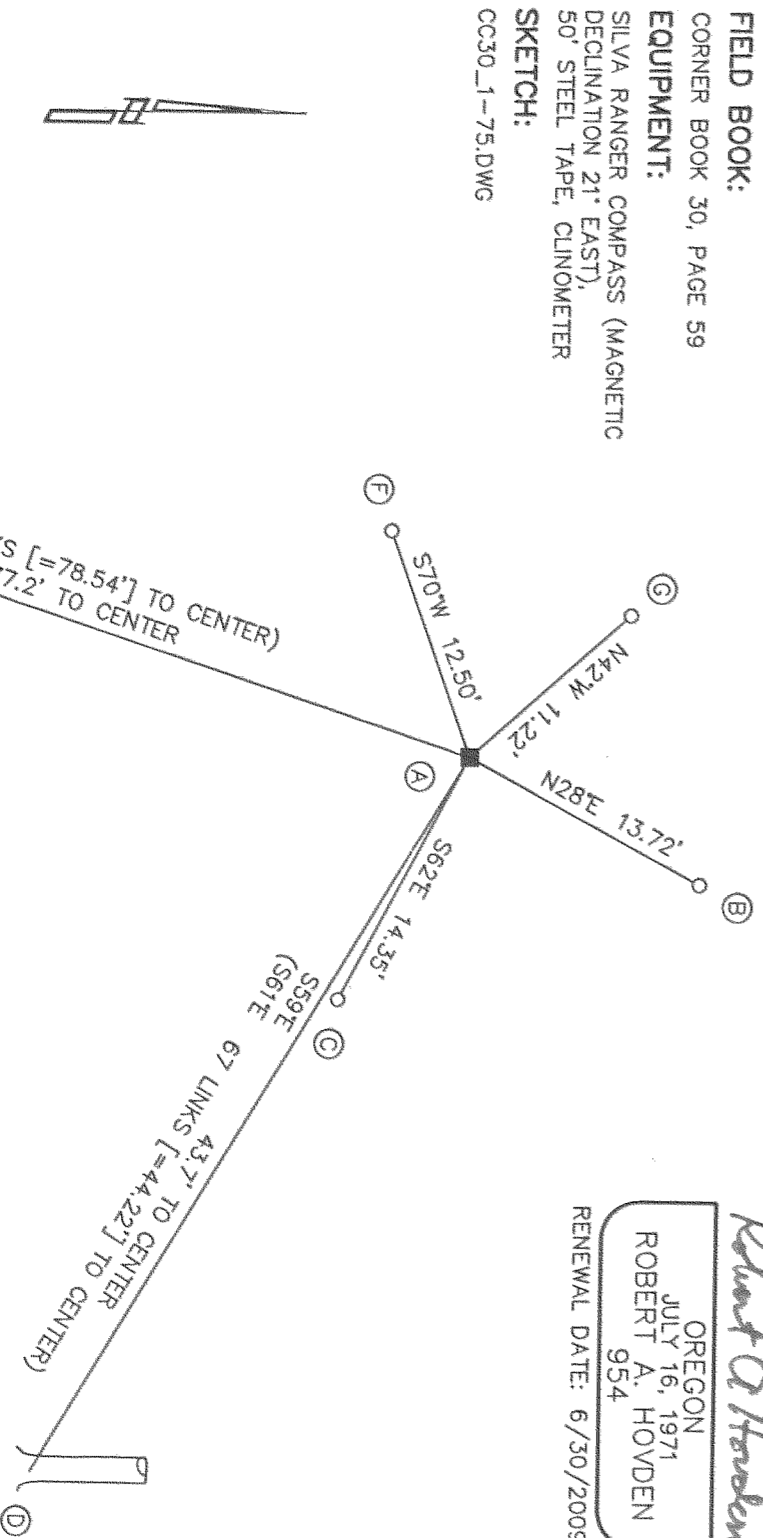
EQUIPMENT:

SILVA RANGER COMPASS (MAGNETIC DECLINATION 21° EAST),
50' STEEL TAPE, CLINOMETER

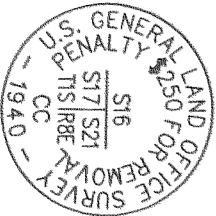
SKETCH:

CC30_1-75.DWG

REGISTERED PROFESSIONAL LAND SURVEYOR
Robert A. Hovden
OREGON
JULY 16, 1971
ROBERT A. HOVDEN
954
RENEWAL DATE: 6/30/2009



SCALE: 1" = 10'
BRASS DISC



BEARINGS IN PRESENT SURVEY DETERMINED BY HANDHELD SILVA RANGER COMPASS (MAGNETIC DECLINATION 21° EAST).

() = RECORD DATA PER G.L.O.

CS 2007 110

RECEIVED OCT 11 AM

CS 2007 110