

RECORD OF SURVEY  
FOR  
LONGVIEW TIMBER CORPORATION  
IN THE  
SE1/4 OF SECTION 24 T1N R9E, W.M.  
HOOD RIVER COUNTY, OREGON

HOOD RIVER COUNTY  
SURVEYOR'S OFFICE

SURVEY NO. CS 2007 108

FILED DATE: 10/19/07

BY: Nathan A. Woodward

**QUARTER CORNER**

FOUND AND HELD A 1 1/2" IRON PIPE WITH 2" LEAD CAP 0.9 FEET ABOVE GROUND SET BY "FREY" AND PREVIOUSLY ACCEPTED BY TERRA SURVEYING IN SN 87059.






NEW REFERENCES:  
17" FIR N14°E AT 7.00' [1/4 S24 BT]  
6' POST & TAG SOUTH AT 1.0'  
CORNER FALLS 5.5' NORTH OF A SMALL CREEK.

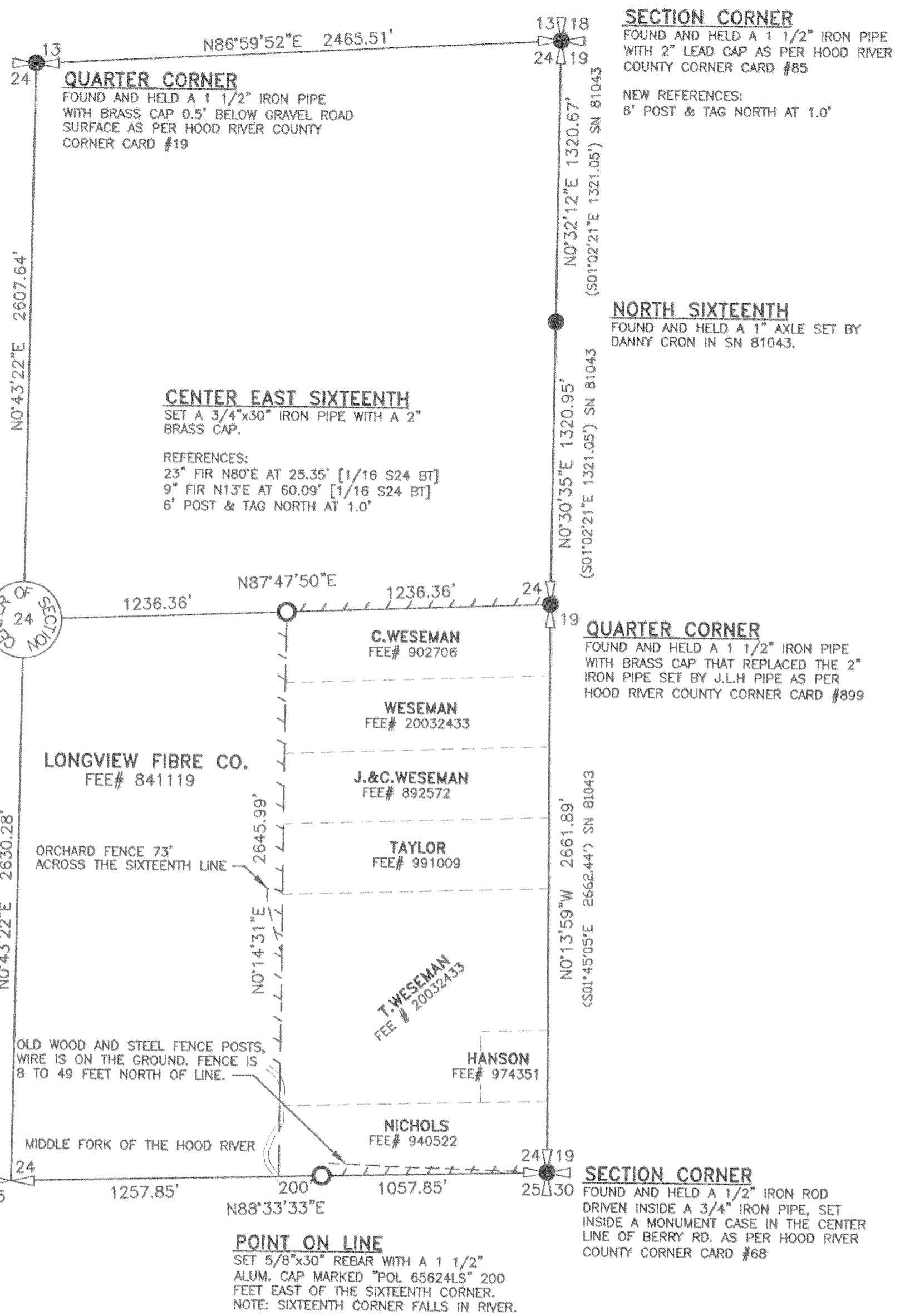
**SECTION CORNER**

FOUND AND HELD A 1 1/2" IRON PIPE WITH 2" LEAD CAP SET BY "FREY" AND PREVIOUSLY ACCEPTED BY TERRA SURVEYING IN SN 87059. NOTE: I FOUND THE CREEK TO BE 35' EAST OF THE CORNER (GLO CALL 1 CHAIN EAST). TERRA NOTES THE CREEK AS BEING 1 CHAIN WEST OF THE CORNER.

NEW REFERENCES:  
4" CEDAR N89°W AT 4.60'  
5" FIR S83°E AT 32.26'  
4" FIR N69°E AT 8.87'  
6' POST & TAG S45°W AT 1.0'  
NOTE: 4 NOTCHES IN PLACE OF SCRIBE DUE TO THE SIZE OF THE TREES.

**LEGEND**

-  SECTION CORNER
-  QUARTER CORNER
-  FOUND MONUMENT
-  SET MONUMENT (FIRST MONUMENT SET 7/17/07)
-  LINE MARKED WITH 1/2" x 72" FIBERGLASS RODS WITH RED AND WHITE FLAGGING BETWEEN RODS. TREES ALONG LINE PAINTED WITH BLUE PAINT
- SN SURVEY NUMBER, HOOD RIVER COUNTY
- ( ) RECORD BEARING AND/OR DISTANCE, AS NOTED



**BASIS OF BEARING**  
BEARINGS BASED ON GPS CONTROL POINTS "DIAMOND"  
LAT. 45°37'41.49862"N LONG. 121°32'24.55478"W  
AND "PONDER2"  
LAT. 45°42'39.36936"N LONG. 121°32'59.76104"W  
NAD 83(91) STATE PLANE COORDINATE SYSTEM  
-OREGON NORTH ZONE 3601-  
AT THE CENTER OF SECTION 24  
THE CONVERGENCE ANGLE = -0°48'32.40864  
COMBINED FACTOR = .999845698

0 500 1000  
SCALE: 1"=500'  
GRID DISTANCES SHOWN

**NARRATIVE**

THE PURPOSE OF THIS SURVEY WAS TO ESTABLISH LONGVIEW TIMBER CORPORATION PROPERTY LINES IN THE SOUTHEAST QUARTER OF SECTION 24, TOWNSHIP 1 NORTH, RANGE 9 EAST OF THE WILLAMETTE MERIDIAN, PARKDALE, OREGON.

GPS CONTROL WAS SET NEAR THE NORTH AND WEST QUARTER CORNERS, THE SOUTHWEST, SOUTHEAST AND THE NORTHEAST SECTION CORNERS USING LEICA 1200 SERIES RECEIVERS. THE GPS CONTROL IS BASED ON GPS POINTS "DIAMOND" AND "PONDER2". A CLOSED TRAVERSE WAS RUN USING A LEICA TCR 1203 TOTAL STATION FROM GPS CONTROL, TO THE SOUTHEAST SECTION CORNER; THENCE NORTH ALONG BERRY DR. TO THE EAST QUARTER OF SECTION 24; THENCE NORTH TO THE NORTHEAST SECTION CORNER, CLOSING ON GPS CONTROL. A CLOSED TRAVERSE WAS RUN FROM GPS CONTROL TYING THE SOUTHWEST SECTION CORNER, BOTH THE WEST AND NORTH QUARTER CORNERS WHERE TIED DIRECTLY FROM GPS CONTROL. ANOTHER CLOSED TRAVERSE WAS RUN FROM CONTROL SET IN A PREVIOUS TRAVERSE FROM THE EAST QUARTER WEST TO THE CENTER EAST SIXTEENTH CORNER; THENCE SOUTH ALONG THE SIXTEENTH LINE TO THE EAST SIXTEENTH CORNER; THENCE EAST ALONG SECTION LINE CLOSING ON GPS CONTROL.

I HELD ALL EXISTING AND PREVIOUSLY ACCEPTED CONTROLLING CORNERS TO SUBDIVIDE THE SECTION AS PER LONGVIEW TIMBER CORPORATION AND ITS NEIGHBORS DEEDS.

DEED FEE #940522 DESCRIBES THE PARCEL AS "THE SOUTH HALF OF THE SOUTH HALF OF THE SOUTHEAST QUARTER OF THE SOUTHEAST QUARTER"... "INCLUDING A MINIMUM OF 330 FEET LINEAL FRONTAGE ON EACH SIDE OF THE MIDDLE FORK OF THE HOOD RIVER"... MY SURVEY REVEALED THAT THEY DO NOT HAVE 330 FEET ON EACH SIDE, HOWEVER THE PROPERTY DOES TOUCH THE RIVER. I TRACED THE DEEDS PRIOR TO THE "RIVER FRONTAGE" CLAIM AND FOUND WHEN THE LAND WAS PURCHASED FROM THE OREGON LUMBER COMPANY ON JULY 27, 1945 BY MR. & MRS. LINEBERGER UNDER DEED FEE#64896 AND READS THE "EAST HALF OF THE SOUTHEAST QUARTER OF SECTION 24, TOWNSHIP 1 NORTH, RANGE 9 EAST W.M. CONTAINING 80 ACRES, MORE OR LESS", WITH NO MENTION OF RIVER FRONTAGE. THE RIVER FRONTAGE STATEMENT FIRST APPEARED ON DEED FEE# 741839 AND THE REAL PROPERTY SALES CONTRACT FROM LINEBERGER TO NICHOLS #741840 DATED SEPTEMBER 25, 1974. AND ONLY ON THAT PARCEL.

PROPERTY IN DEED FEE# 991009 WAS CONVEYED WITH A METES AND BOUNDS DESCRIPTION IN THE "BODY" OF THE DEED, HOWEVER IT STARTS ON THE EAST LINE OF THE SECTION, AND GOES 1319.23 FEET MORE OR LESS, TO THE EAST LINE OF THE WEST HALF OF THE SOUTHEAST QUARTER. THE DEED IS ALSO LIMITED TO THE "SOUTH HALF OF THE SOUTH HALF OF THE NORTHEAST QUARTER OF THE SOUTHEAST QUARTER OF SECTION 24..." IN THE CAPTION OF THE DEED. THEREFORE I HELD THE SIXTEENTH LINE AS THE WEST BOUNDARY OF SAID PROPERTY.

**NOTE:**  
NEW REFERENCES HAVE AN 8" SPIKE AT THE BASE OF THE SCRIBE WITH A LOCATION TAG ABOVE THE SCRIBE, ALL ORIENTED TOWARD MONUMENT DISTANCES MEASURED TO SPIKE, BEARINGS TO REFERENCES TAKEN WITH HAND COMPASS HAVING A DECLINATION OF 21' EAST.

THIS MAP CORRECTLY REPRESENTS A SURVEY MADE UNDER MY DIRECT SUPERVISION AT THE REQUEST OF LONGVIEW TIMBER CORPORATION IN JULY OF 2007

NATHAN A. WOODWARD, PLS  
CERTIFICATE NO. 65624LS

LONGVIEW TIMBER CORPORATION  
PO BOX 667  
LONGVIEW, WA 98632  
(360) 575-5111

REGISTERED  
PROFESSIONAL  
LAND SURVEYOR

*Nathan A. Woodward*  
OREGON  
JULY 12, 2005  
NATHAN A. WOODWARD  
65624LS  
EXPIRATION DATE: 6/30/08