

NORTHWEST CORNER
LOT 40
FOUND 1/2" IRON ROD
AS PER CS 90034

HIGHWAY STATION 202 + 19.8 P.O.T.

NORTHEAST CORNER
SECTION 30
FOUND 5/8" IRON ROD
IN MONUMENT CASE

HOOD RIVER COUNTY
SURVEYOR'S OFFICE
SURVEY NO. CS 2007 101
FILED DATE: September 4, 2007
BY: Amy Johns

Partition Plat # 200731P
Instrument received on the 27th
day of Sept. 2007
at 9:10 A.M.
Deah Day - Clerk
Hood River Director of Records
and Assessments

SURVEYOR'S CERTIFICATE:
Kevin Dowd
I, Kevin Dowd
say that I have correctly surveyed and
marked with proper monuments the lands
represented on this Partition Plat, the
boundaries being described in instrument:
PARCEL 1 OF PARTITION PLAT 2006 33P
RECORDED DECEMBER 29, 2006
TO RONALD V. GILBERT
AND CHARLOTTE D. GILBERT
HOOD RIVER COUNTY DEED RECORDS

DECLARATION:
We the owner(s) of the land shown
herein, hereby declare that this division
of land has been made with our free
consent and in accordance with our
desires.
Ronald V Gilbert 9-20-07
OWNER DATE

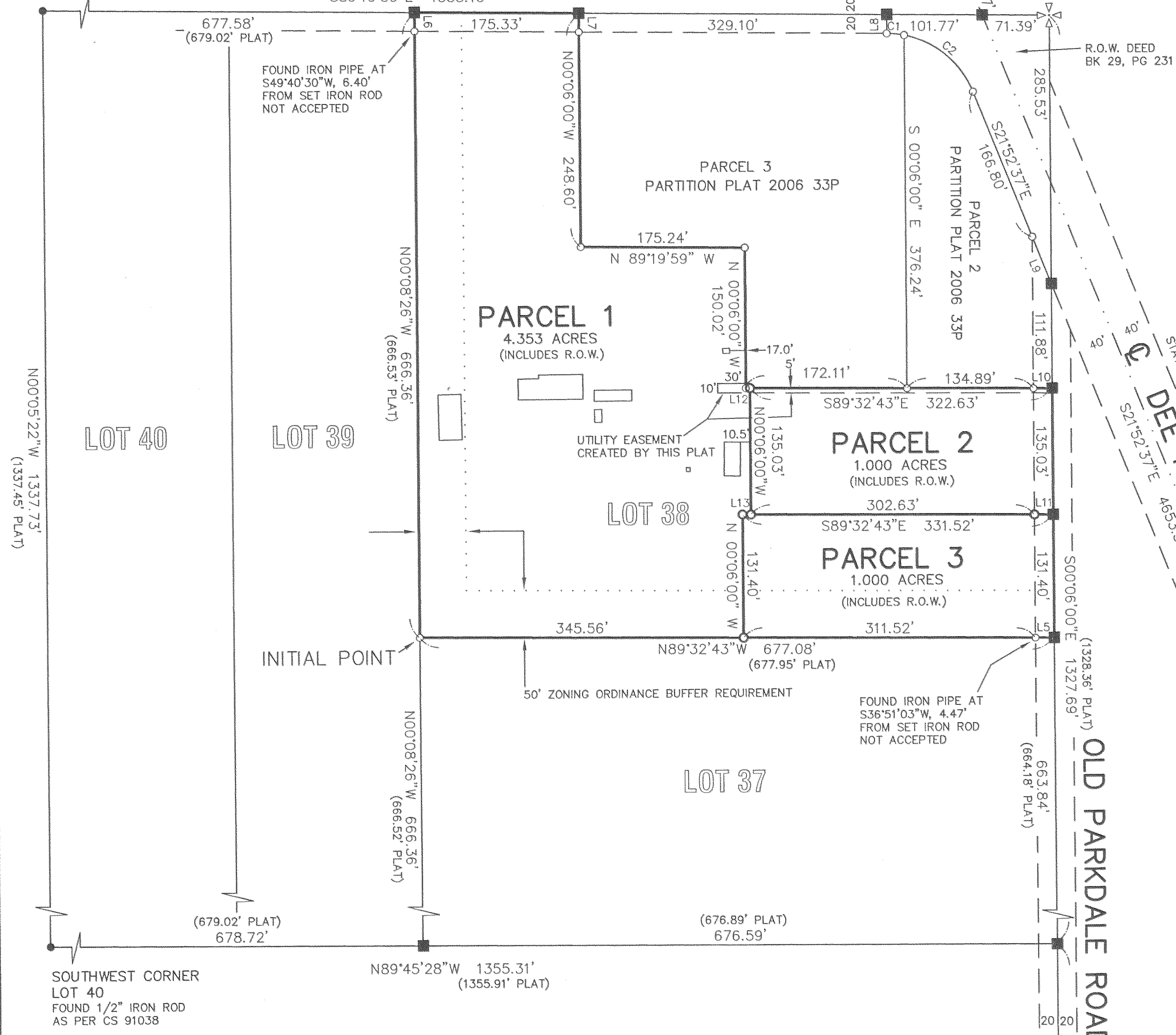
ACKNOWLEDGMENTS:
This instrument was acknowledged before me
on 20 day of September 2007
by Ronald V Gilbert
Gineth Santacrose Dowd
Notary signature
Annette Santacrose Dowd
NOTARY PUBLIC - OREGON
COMMISSION No. 395865
My commission expires Sept 14 2009

Charlotte Gilbert 9/20/07
OWNER DATE
This instrument was acknowledged before me
on 20 day of September 2007
by Charlotte Dekres Gilbert

Gineth Santacrose Dowd
Notary signature
Annette Santacrose Dowd
NOTARY PUBLIC - OREGON
COMMISSION No. 395865
My commission expires Sept 14 2009

APPROVALS:
I hereby certify that all taxes and
assessment due hereon have been fully
paid as required by law.
[Signature]
Hood River County Director of
Budget and Finance
I hereby certify this partition was
examined and approved as of this 20th
day of September, 2007
Ronald V Gilbert
Hood River County Surveyor

I hereby certify this partition was
examined and approved as of this 26th
day of SEPT., 2007
Planning File Number # 07-069
M Benecke
Hood River County Planning Director



SCALE 1" = 100 FEET
BASIS OF BEARING: CS 2007 003

I HEREBY CERTIFY THIS IS AN EXACT
COPY OF THE ORIGINAL PLAT
REGISTERED
PROFESSIONAL
LAND SURVEYOR
Kevin Dowd
OREGON
JULY 26, 1989
KEVIN DOWD
2393
RENEW DATE: 12-31-07
AUGUST 20, 2007

LINE	LENGTH	BEARING
L1	29.96	N68°08'06"E
L2	29.96	N68°08'06"E
L3	40.00	N67°52'14"E
L4	40.00	N67°52'14"E
L5	20.00	N89°32'43"W
L6	20.00	N00°08'26"W
L7	20.00	N00°06'00"W
L8	20.00	S00°40'01"W
L9	53.91	S21°52'37"E
L10	20.00	N89°32'43"W
L11	20.00	S89°32'43"E
L12	4.37	S89°32'43"E
L13	8.89	S89°32'43"E

MEASURE 37 PRECAUTIONARY NOTICE
THE LOTS/PARCELS ON THIS PLAT OR IN THIS INSTRUMENT OF TRANSFER OR
CONVEYANCE WERE ALLOWED BY HOOD RIVER COUNTY AND IN THE STATE OF
OREGON PURSUANT TO ORS 197.352 AND COUNTY RESOLUTION NO. 1346
ADOPTED NOVEMBER 29, 2004. HOOD RIVER COUNTY MAKES NO WARRANTIES AS TO
TRANSFERABILITY OF THE LOTS OR PARCELS AND/OR DEVELOPMENT RIGHTS
RELATED TO THEM.
SUBJECT TO A DECLARATION OF DEED RESTRICTIONS
RECORDED September 27 2007, AS DOC# 20074369

NARRATIVE

THE PURPOSE OF THIS SURVEY IS TO PARTITION PARCEL 1
OF PARTITION PLAT 2006 33P INTO THREE PARCELS.
THE BOUNDARIES WERE ESTABLISHED AS PER SAID PLAT.
THE PARTITION LINE WAS ESTABLISHED AS PER CLIENT INSTRUCTION.

LEGEND

- SET 5/8" X 30" IRON ROD WITH YELLOW PLASTIC CAP
MARKED "WYEAST LS 2393" ON AUGUST 2, 2007
- FOUND 5/8" IRON ROD AS PER CS 2007 003
- FOUND MONUMENT AS NOTED
- FOUND IRON PIPE
- CALCULATED POSITION
- (xxx) PLAT DATA

CURVE	DELTA ANGLE	RADIUS	ARC	TANGENT	CHORD	CHORD BEARING
C1	10°41'23"	100.00	18.66	9.36	18.63	N83°59'18"W
C2	56°45'59"	100.00	99.08	54.03	95.07	N50°15'37"W

PARTITION PLAT

LOCATED IN LOT 38, WOODWORTH ACRES
IN THE NORTHEAST QUARTER
OF SECTION 30
T1 NORTH, R10 EAST, W.M.
HOOD RIVER COUNTY, OREGON

FOR: RON GILBERT

Certified to be a true and
correct copy of the ORIGINAL
Dept. of Records & Assessment
By: L. Day Deputy

WYEAST SURVEYS
KEVIN DOWD
4399 WOODWORTH DR.
MT HOOD, OR 97041
(541) 352-6065