

**HOOD RIVER COUNTY
SURVEYOR'S OFFICE**

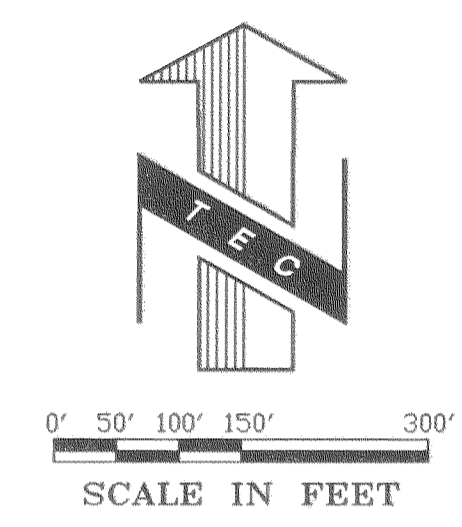
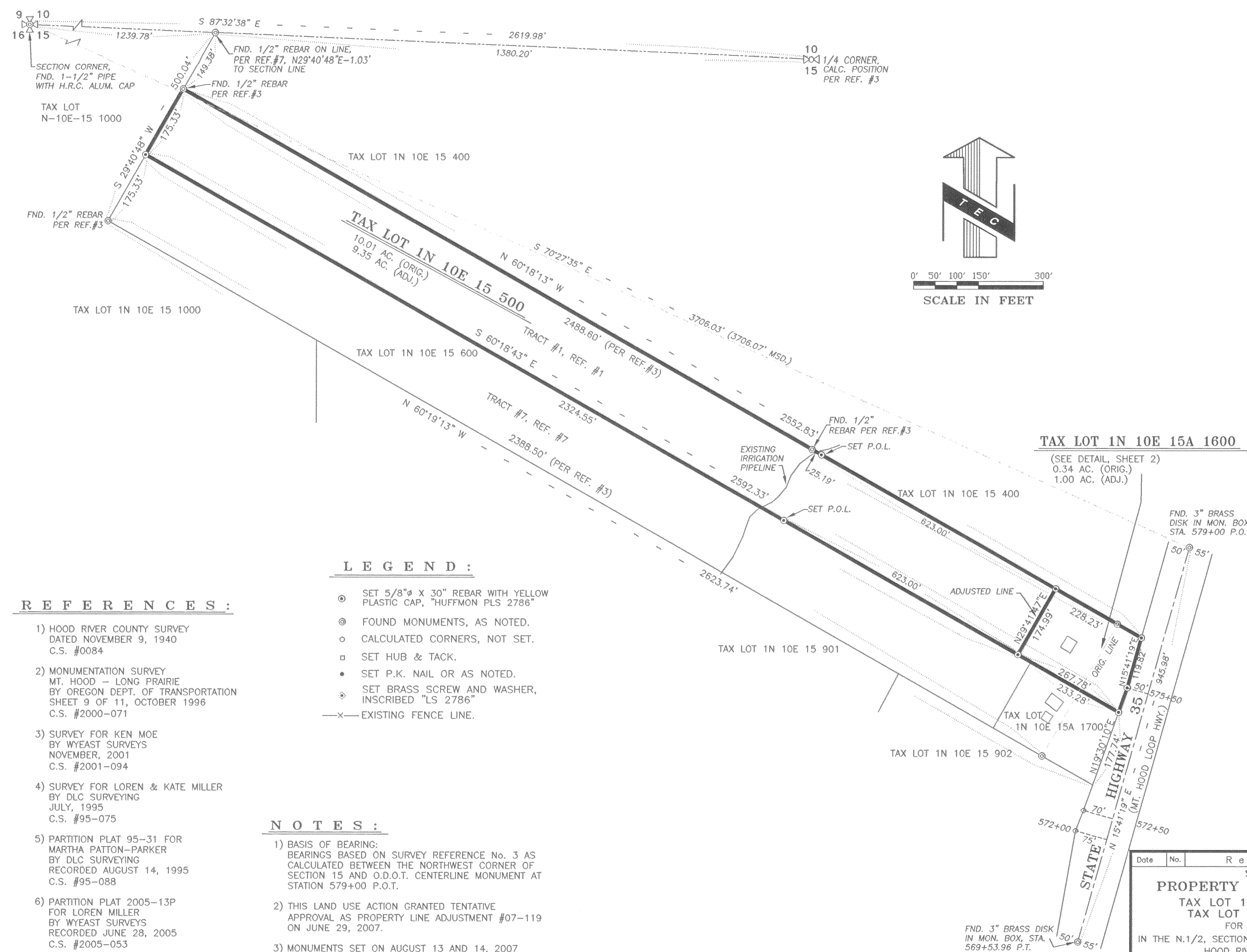
Survey No. CS 2007 099

Filed Sept. 25, 2007

By Bradley R. Huffmon

OWNER:

MICHAEL NASTASI
2 BAILEY LANE
BREWSTER, NEW YORK 10509
PH. (845) 279-8381



REFERENCES:

- 1) HOOD RIVER COUNTY SURVEY DATED NOVEMBER 9, 1940 C.S. #0084
- 2) MONUMENTATION SURVEY MT. HOOD - LONG PRAIRIE BY OREGON DEPT. OF TRANSPORTATION SHEET 9 OF 11, OCTOBER 1996 C.S. #2000-071
- 3) SURVEY FOR KEN MOE BY WYEAST SURVEYS NOVEMBER, 2001 C.S. #2001-094
- 4) SURVEY FOR LOREN & KATE MILLER BY DLC SURVEYING JULY, 1995 C.S. #95-075
- 5) PARTITION PLAT 95-31 FOR MARTHA PATTON-PARKER BY DLC SURVEYING RECORDED AUGUST 14, 1995 C.S. #95-088
- 6) PARTITION PLAT 2005-13P FOR LOREN MILLER BY WYEAST SURVEYS RECORDED JUNE 28, 2005 C.S. #2005-053
- 7) SURVEY FOR HANEL LUMBER CO. BY DLC SURVEYING JULY 22, 1993 C.S. #93-062

LEGEND:

- ⊙ SET 5/8" X 30" REBAR WITH YELLOW PLASTIC CAP, "HUFFMON PLS 2786"
- ⊙ FOUND MONUMENTS, AS NOTED.
- CALCULATED CORNERS, NOT SET.
- SET HUB & TACK.
- SET P.K. NAIL OR AS NOTED.
- ⊠ SET BRASS SCREW AND WASHER, INSCRIBED "LS 2786"
- x- EXISTING FENCE LINE.

NOTES:

- 1) BASIS OF BEARING: BEARINGS BASED ON SURVEY REFERENCE No. 3 AS CALCULATED BETWEEN THE NORTHWEST CORNER OF SECTION 15 AND O.D.O.T. CENTERLINE MONUMENT AT STATION 579+00 P.O.T.
- 2) THIS LAND USE ACTION GRANTED TENTATIVE APPROVAL AS PROPERTY LINE ADJUSTMENT #07-119 ON JUNE 29, 2007.
- 3) MONUMENTS SET ON AUGUST 13 AND 14, 2007

| TAX LOT/MAP | ORIGINAL | ADJUSTED |
|-----------------------------------|------------------|------------------|
| 1N 10E 15 500 | 10.01 AC. | 9.35 AC. |
| 1N 10E 15A 1600 | 0.34 AC. | 1.00 AC. |
| TOTAL | 10.35 AC. | 10.35 AC. |
| ADJUSTMENT AREA = 0.66 AC. | | |

FND. 3" BRASS DISK IN MON. BOX, STA. 569+53.96 P.T.

REGISTERED PROFESSIONAL LAND SURVEYOR

Bradley R. Huffmon

OREGON
JAN. 21, 1997
BRADLEY R. HUFFMON
#2786

EXPIRES: JUNE 30, 2009

| Date | No. | Revisions | By | App. |
|--|-------------|----------------|----------------|---------|
| SURVEY OF PROPERTY LINE ADJUSTMENT TAX LOT 1N 10E 15 500 AND TAX LOT 1N 10E 15A 1600 FOR MICHAEL NASTASI IN THE N.1/2, SECTION 15, TWP.1 N., RANGE 10 E. W.M. HOOD RIVER COUNTY, OREGON | | | | |
| TENNESON ENGINEERING CORP. CONSULTING ENGINEERS 409 LINCOLN STREET THE DALLES, OREGON 97058 541-296-9177 FAX 541-296-6657 | | | | |
| Survey | Calculation | Design | Date | Scale |
| B.R.H. | B.B.B. | | 9/20/2007 | 1"=150' |
| Drawn | DWG. No. | Checked & App. | Work Order No. | Sheet |
| S.D.H. | 12556pla(1) | | 12556 | 1 of 2 |

9-27-07 1300

CS 2007 099-1