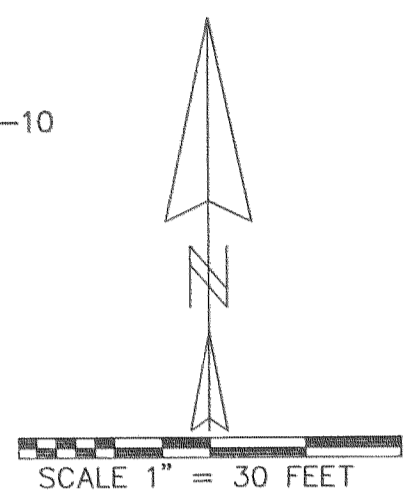
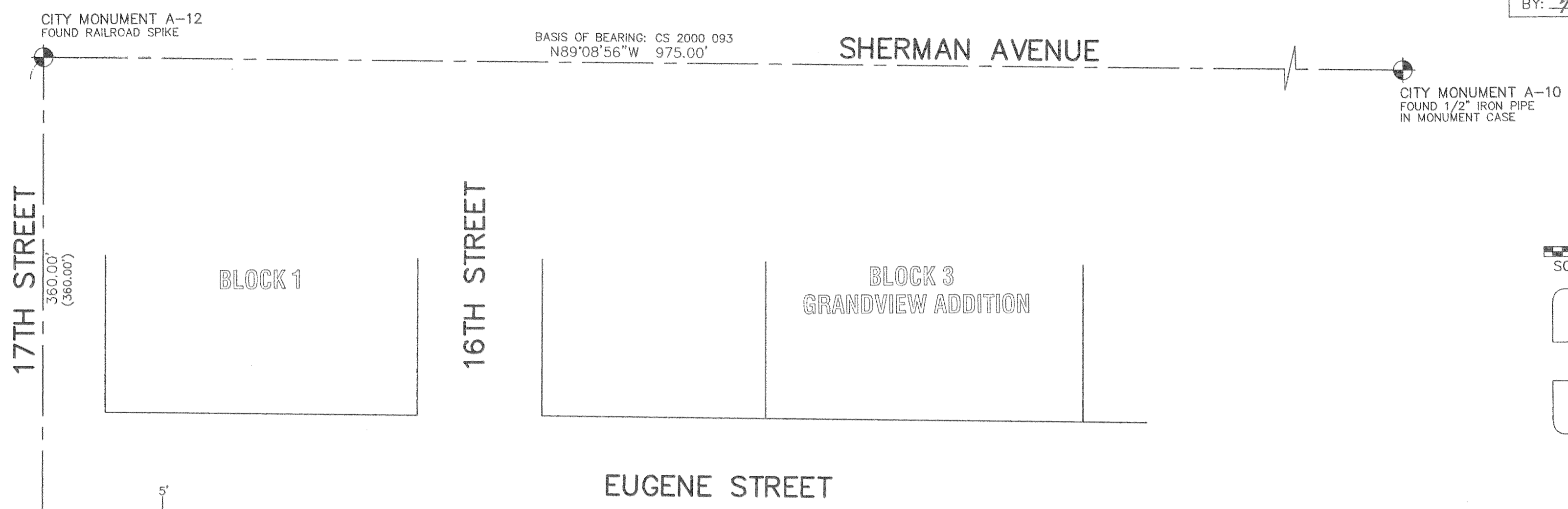


HOOD RIVER COUNTY  
 SURVEYOR'S OFFICE  
 SURVEY NO. *CS 2007 085*  
 FILED DATE: *August 9, 2007*  
 BY: *Kevin Dowd*



REGISTERED  
 PROFESSIONAL  
 LAND SURVEYOR  
*Kevin Dowd*  
 OREGON  
 JULY 26, 1989  
 KEVIN DOWD  
 2393  
 RENEW DATE: 12-31-07  
 JULY 16, 2007

**LEGEND**

- SET 1/2" IRON ROD WITH YELLOW PLASTIC CAP MARKED "WYEAST LS 2393" ON JUNE 29, 2007
- FOUND MONUMENT AS NOTED
- CALCULATED POSITION
- (xxx) PLAT OR RECORD DATA

LINE TABLE		
LINE	LENGTH	BEARING
L1	14.90	S88°55'00"E

**RECORD OF SURVEY**

LOCATED IN BLOCK 4, GRANDVIEW ADDITION  
 AND IN THE NORTHEAST QUARTER OF SECTION 35  
 T3 NORTH, R10 EAST, W.M.  
 IN THE CITY OF HOOD RIVER  
 HOOD RIVER COUNTY, OREGON

**FOR:** JOHN AND SUZANNE JIGANTI

**NARRATIVE**

THE PURPOSE OF THIS SURVEY IS TO ESTABLISH THE BOUNDARIES OF THAT TRACT OF LAND DESCRIBED IN DEED RECORDED AS DOC# 951904 AND THAT TRACT DESCRIBED IN EXHIBIT D OF CIRCUIT COURT CASE NO. 05-02CC. RECORD DATA WAS HELD TO ESTABLISH THE SOUTHEAST AND SOUTHWEST CORNERS OF EXHIBIT D. RECOVERED MONUMENTS WERE HELD TO ESTABLISH THE BOUNDARIES OF LOT 3 AND THE EAST 15 FEET OF LOT 2, BLOCK 4, GRANDVIEW ADDITION.

CITY MONUMENT E-7  
 CALCULATED POSITION  
 AS PER CITY COORDINATES