

SANITARY SEWER MANHOLE #259
RIM ELEV=409.03'
8" VCP SOUTH INVERT=401.78'
8" VCP EAST INVERT=401.53'

NARRATIVE:

THE PURPOSE OF THIS SURVEY IS TO PROVIDE BOUNDARY INFORMATION AND TOPOGRAPHIC DETAIL ON THE LOT 15 AND THE NORTH HALF OF LOT 16, BLOCK 2 IN THE WAUCOMA PARK ADDITION, HOOD RIVER, OREGON.

THE BOUNDARY WAS DETERMINED BY USING FOUND MONUMENTS ON THE SOUTH LINE OF BLOCK 2 TO PROPORTION THE SOUTHWEST CORNER OF THE BLOCK, USING THIS CALCULATED POSITION AND FOUND 1 1/4" IRON PIPE WHICH WE HELD THE POSITION NORTH AND SOUTH AND PROPORTIONED THE DISTANCES ON THE WEST LINE OF OUR SUBJECT LOT IN BLOCK 2. THE EAST AND WEST POSITION OF THE WEST LINE OF BLOCK 2 WAS DETERMINED BY HOLDING THE 1/2" IRON ROD FOUND AT THE ADJUSTED SOUTHWEST CORNER OF LOT 11, SEE CS #2004 026. THE MONUMENTS FOUND ON THE EAST LINE OF OUR SUBJECT LOT WERE HELD, THERE DISTANCES WERE FOUND WITHIN A REASONABLE TOLERANCE OF THE RECORD DISTANCE.

THE TOPOGRAPHIC DETAIL WAS GIVEN IN A 1 FOOT CONTOUR INTERVAL. WE WERE UNABLE TO LOCATE THE SANITARY MANHOLE TO THE NORTH OF MANHOLE #146. WE DID FIND A MANHOLE NORTH A DISTANCE OF 391 FEET TO A MANHOLE ON THE SOUTH SIDE OF MONTELLO AVE. WITH A 8" PIPE FLOWING FROM THE SOUTH. THE DISTANCE AND SLOPE SHOW THAT THERE SHOULD BE AN INTERMEDIATE MANHOLE ON LINE BETWEEN THE TWO MANHOLES.

BASIS OF BEARING AND VERTICAL DATUM:

U.S.G.S STATION PONDER-2
N.A.V.D 1983 (1998 ADJUSTMENT)
LATITUDE = 45°42'39.37105" (N)
LONGITUDE = 121°32'59.76083" (W)
ORTHOMETRIC HEIGHT OF 102.638 METERS (336.74')
N.A.V.D. 1988 USING THE 1999 GEOID FOR THE U.S.

BASIS OF BEARING OF THE SURVEY IS OREGON STATE PLANE,
NORTH ZONE (3601), GRID BEARINGS & INTERNATIONAL FEET.

REFERENCES:

- PLAT OF WAUCOMA PARK AND REPLAT OF SOUTH WAUCOMA ADDITION
- HOOD RIVER COUNTY SURVEY #2004 026
- HOOD RIVER COUNTY SURVEY #2003 061
- HOOD RIVER COUNTY SURVEY #2000 106
- HOOD RIVER COUNTY SURVEY #92059
- HOOD RIVER COUNTY SURVEY #77049

LOCATION OF SURVEY:

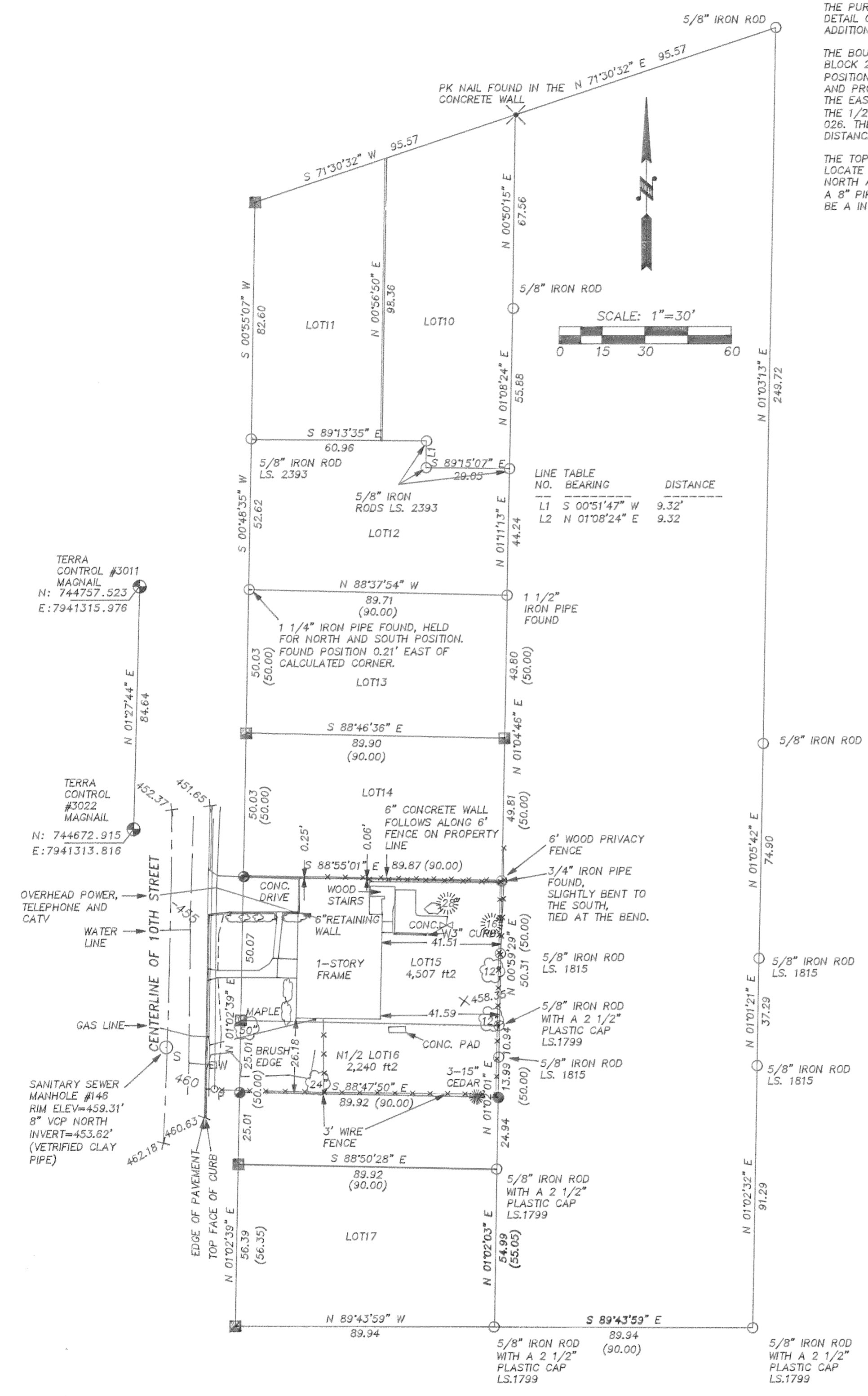
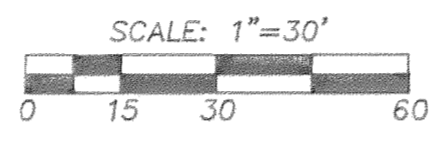
LOT 15 AND THE NORTH HALF OF LOT 16 OF BLOCK 2 OF THE PLAT WAUCOMA PARK ADDITION, SECTION 36, TOWNSHIP 3 NORTH, RANGE 10 EAST, WILLAMETTE MERIDIAN, CITY OF HOOD RIVER, HOOD RIVER COUNTY, OREGON.

LEGEND:

- SET 5/8" X 30" IRON ROD WITH PLASTIC CAP
- FOUND MONUMENT OF RECORD
- ✕ PK NAIL FOUND
- CALCULATED, NOT FOUND OR SET
- () DEED OR PLAT CALL
- TERRA CONTROL POINT
- SANITARY MANHOLE
- W WATER METER
- ⊗ W WATER VALVE
- ⊖ P POWER POLE
- G GAS METER
- BUSH
- ☀ CONIFEROUS TREE
- ☁ DECIDUOUS TREE

LINE TABLE

NO.	BEARING	DISTANCE
L1	S 00°51'47" W	9.32'
L2	N 01°08'24" E	9.32'



REGISTERED
PROFESSIONAL
LAND SURVEYOR

[Signature]

OREGON
JULY 13, 1979
ROY O. GAYLORD
1815

Expires June, 2007

TERRA SURVEYING

DATE: APRIL, 2006
SCALE: 1" = 30'
PROJECT: 206011

P.O. BOX 617
HOOD RIVER, OREGON 97031

PHONE & FAX: (541) 386-4531
terra@gorge.net

BOUNDARY AND TOPOGRAPHIC SURVEY
for
HANK THURSTON

CS 2007 058