

RECORD OF SURVEY

LOCATED IN BLOCK 2 OF THE AMENDED PLAT OF IDLEWILDE ADDITION TO HOOD RIVER
 IN THE SE 1/4 OF THE SE 1/4 OF SECTION 26, TOWNSHIP 3 NORTH, RANGE 10 EAST W.M.
 CITY OF HOOD RIVER, HOOD RIVER COUNTY, OREGON.

TAX LOT 2800, 3N-10E-26DD

FEBRUARY 8 2007



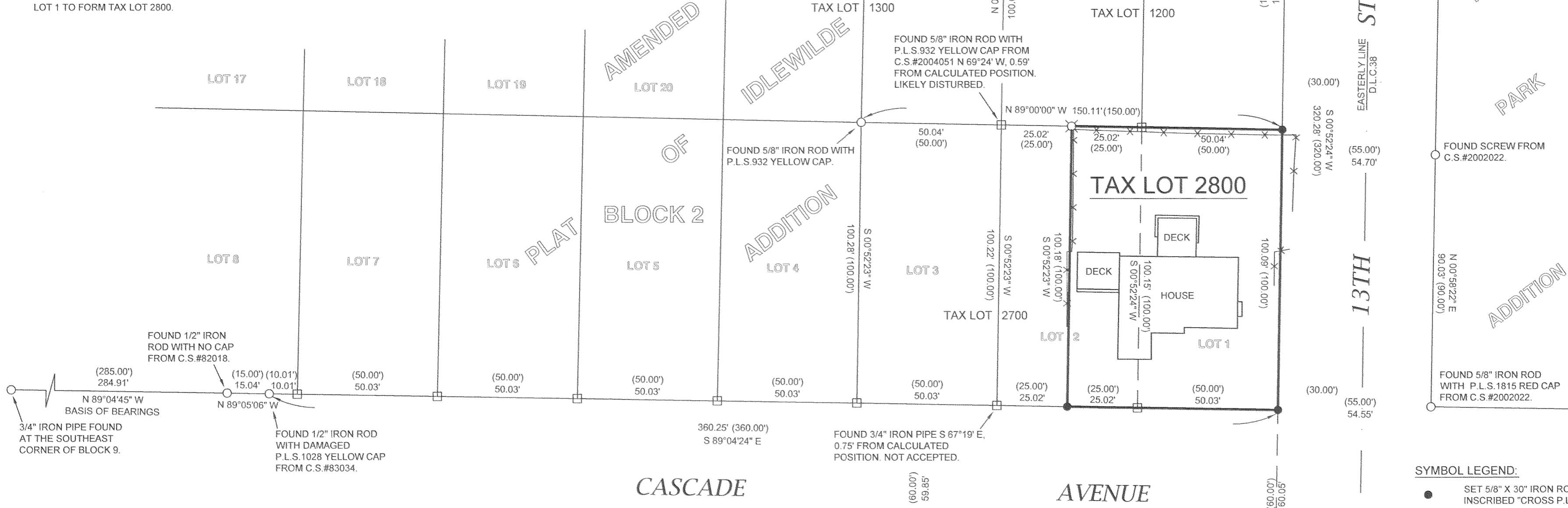
SCALE 1 INCH = 30 FEET

NARRATIVE:

THE PURPOSE OF THIS SURVEY IS TO VERIFY AND MONUMENT THE PROPERTY BOUNDARY OF TAX LOT 2800 OF HOOD RIVER COUNTY ASSESSORS MAP 03N-10E-26DD. TAX LOT 2800 IS DESCRIBED BY AMERITITLE PRELIMINARY TITLE REPORT #1, TITLE NUMBER 0035220 DATED FEBRUARY 7, 2006, AS BEING ALL OF LOT 1 AND THE EAST HALF OF LOT 2, BLOCK 2 OF THE AMENDED PLAT OF IDLEWILDE ADDITION. THE EAST LINE OF BLOCK 2 WAS PROPORTIONED BETWEEN THE MONUMENTS FOUND AT THE SOUTHEAST CORNER OF BLOCK 3 AND THE NORTHEAST CORNER OF BLOCK 1 BY SURVEYS C.S. 2004053 & C.S. 87063 RESPECTIVELY. THE MONUMENT FOUND AT THE NORTHEAST CORNER OF BLOCK 2 WAS NOT ACCEPTED AS PER C.S. 2004051 AS IT DOES NOT CORRELATE WELL WITH THE EAST LINE OF D.L.C. #38, WHICH IS THE EAST LINE OF THE ORIGINAL IDLEWILDE SUBDIVISION. THE SOUTH LINE OF BLOCK 2 WAS PROPORTIONED BETWEEN THE SOUTHEAST CORNER OF BLOCK 2 AS CALCULATED FROM THE ABOVE SURVEYS AND THE NEXT ACCEPTABLE MONUMENT FOUND TO THE WEST ON THE SOUTH LINE OF BLOCK 2 FROM C.S. 83034. AN IRON PIPE WAS FOUND AT THE SOUTHWEST CORNER OF LOT 2 OF BLOCK 2 AND WAS NOT ACCEPTED AS IT DOES NOT CORRELATE WELL WITH OTHER MONUMENTS SET BY RECENT SURVEYS AND IF IT WERE HELD IT WOULD BURDEN TAX LOT 2800 WITH AN UNREASONABLE DEFICIENCY IN BOUNDARY ALONG CASCADE AVE.

THE WEST AND NORTH LINES OF TAX LOT 2800 WERE PROPORTIONED FROM THE MONUMENT FOUND AT THE NORTHWEST CORNER OF LOT 3. I COULD NOT LOCATE A RECORD OF THIS MONUMENT BUT IT APPEARS TO HAVE BEEN SET AT ABOUT THE SAME TIME AS MONUMENTS FROM C.S. 2004051. THE MONUMENT FOUND AT THE NORTHWEST CORNER OF LOT 3 WAS NOT HELD AS IT APPEARS TO HAVE BEEN DISTURBED AND NO LONGER TIES WELL WITH ADJACENT MONUMENTS FROM THE SAME SURVEY.

LOT 2 WAS DIVIDED IN HALF AS PER THE DESCRIPTION GIVEN IN THE TITLE REPORT AND THE EAST HALF IS SHOWN WITH THE WHOLE OF LOT 1 TO FORM TAX LOT 2800.



BASIS OF BEARINGS:
 C.S.#83034, HOOD RIVER COUNTY SURVEYORS OFFICE.

REFERENCES:
 AMERITITLE PRELIMINARY TITLE REPORT #1, TITLE NUMBER 0035220 DATED FEBRUARY 7, 2006. VESTEE: JAMES JOHN TRACEY.
 SURVEYS FILED WITH HOOD RIVER COUNTY SURVEYORS OFFICE:
 C.S.#2004053, FILED AUGUST 19, 2004.
 C.S.#2004051, FILED AUGUST 30, 2004.
 C.S.#2003033, FILED MAY 8, 2003.
 C.S.#2002022, FILED APRIL 17, 2002.
 C.S.#87063, FILED OCTOBER 21, 1987.
 C.S.#87058, FILED OCTOBER 4, 1987.
 C.S.#83034, FILED AUGUST 4, 1983.
 C.S.#82018, FILED DECEMBER 2, 1982.
 C.S.#81052, FILED JULY 29, 1981.
 AMENDED PLAT OF IDLEWILDE ADDITION, DATED MAY 1903.

FOR
 ANDREW R. KIRSCHBAUM & BARBARA A. BELL

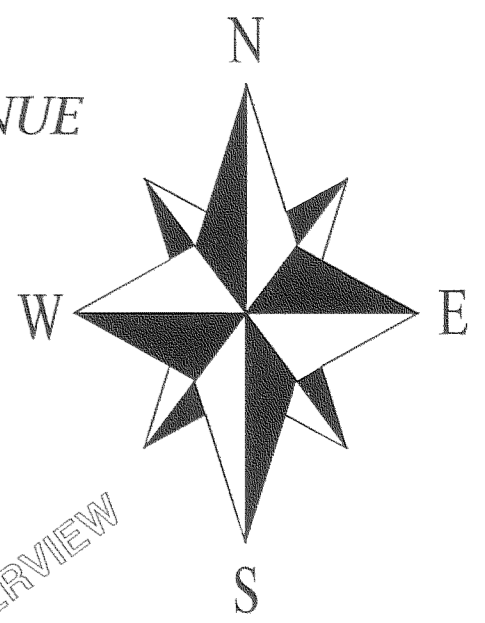
AREA OF TAX LOT 2800 BY THIS SURVEY:
 7,515 Sq.Ft.±
 0.17 ACRES±

REGISTERED PROFESSIONAL LAND SURVEYOR
 OREGON
 JANUARY 15, 2002
 BRADLEY J. CROSS
 60051
 RENEWAL DATE: 12/31/2007

COLUMBIA RIVER SURVEYING & MAPPING

216 CASCADE AVE, SUITE 23
 HOOD RIVER, OREGON, 97031
 PHONE/FAX: 541-386-9002
 EMAIL: INFO@COLUMBIASURVEYING.COM

HOOD RIVER COUNTY SURVEYOR'S OFFICE
 Survey No: CS 2007 023
 Filed Date: 2-6-07
 By: [Signature]



- SYMBOL LEGEND:**
- SET 5/8" X 30" IRON ROD WITH ORANGE PLASTIC CAP INSCRIBED "CROSS P.L.S. 60051".
 - ⊗ SET SCREW IN CONCRETE RETAINING WALL
 - FOUND MONUMENT OF RECORD AS NOTED
 - CALCULATED CORNER, NOT FOUND OR SET
 - (50.00') ORIGINAL PLAT OR DEED DISTANCE
 - x-x-x- FENCE LINE

PROJECT NUMBER: 2007001.
 DATE OF SURVEY MONUMENTATION: FEBRUARY 8 2007.
 DATE OF DRAWING: FEBRUARY 15 2007.
 HOOD RIVER COUNTY ASSESSORS MAP: 03N-10E-26DD.

2-16-07 1000 10

CS 2007 023