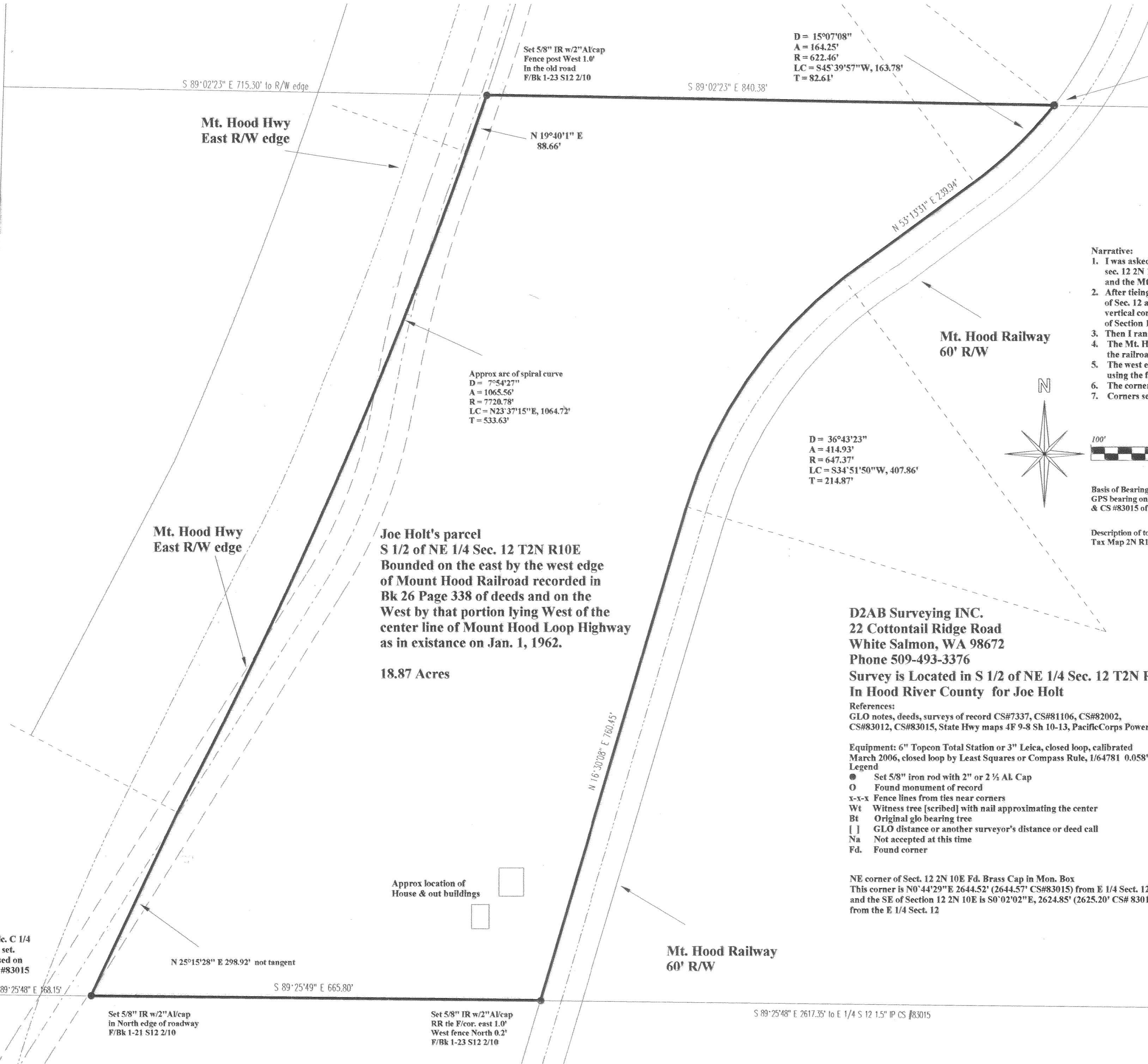
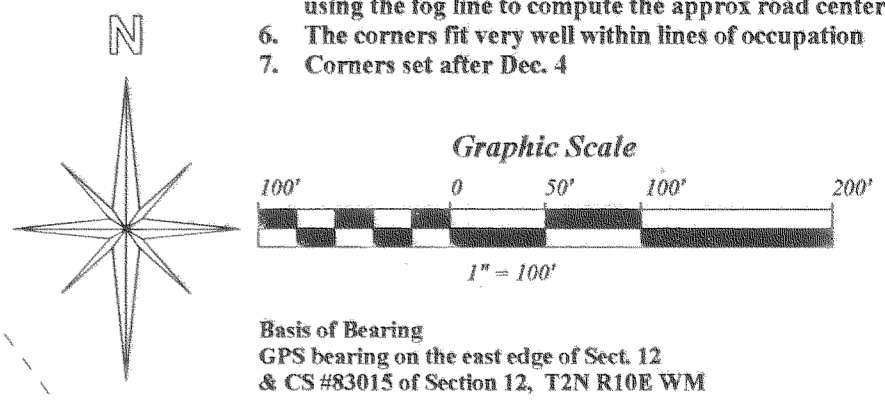


JAN 3 2007

Dennis R. Peoples
COUNTY SURVEYOR
DEPUTY



- Narrative:**
1. I was asked to locate the property in the S 1/2 of NE 1/4 sec. 12 2N 10E, WM bounded by the Mt. Hood Hwy and the Mt. Hood Railroad.
 2. After tying the SE corner of Section 12 and the NE corner of Sec. 12 and other controlling points for horizontal and vertical control for aerial topo survey. I used the east edge of Section 12 as my basis of bearing.
 3. Then I ran a closed traverse through the gps points for sets.
 4. The Mt. Hood Railroad tracks were used as the center line of the railroad to locate the west controlling edge of the railroad.
 5. The west edge of the existing Mt. Hood Hwy was located by using the fog line to compute the approx road center line.
 6. The corners fit very well within lines of occupation
 7. Corners set after Dec. 4



Joe Holt's parcel
S 1/2 of NE 1/4 Sec. 12 T2N R10E
Bounded on the east by the west edge of Mount Hood Railroad recorded in Bk 26 Page 338 of deeds and on the West by that portion lying West of the center line of Mount Hood Loop Highway as in existence on Jan. 1, 1962.

18.87 Acres

D2AB Surveying INC.
22 Cottontail Ridge Road
White Salmon, WA 98672
Phone 509-493-3376

Survey is Located in S 1/2 of NE 1/4 Sec. 12 T2N R10E W.M.
In Hood River County for Joe Holt

- References:**
GLO notes, deeds, surveys of record CS#7337, CS#81106, CS#82002, CS#83012, CS#83015, State Hwy maps 4F 9-8 Sh 10-13, PacificCorps Powerdale Hydroelectric Project
- Equipment:** 6" Topcon Total Station or 3" Leica, closed loop, calibrated March 2006, closed loop by Least Squares or Compass Rule, 1/64781 0.058'.
- Legend**
- Set 5/8" iron rod with 2" or 2 1/2" Al Cap
 - Found monument of record
 - x-x-x Fence lines from ties near corners
 - Wt Witness tree [scribed] with nail approximating the center
 - Bt Original glo bearing tree
 - [] GLO distance or another surveyor's distance or deed call
 - Na Not accepted at this time
 - Fd. Found corner

NE corner of Sect. 12 2N 10E Fd. Brass Cap in Mon. Box
This corner is N0°44'29"E 2644.52' (2644.57' CS#83015) from E 1/4 Sect. 12 and the SE of Section 12 2N 10E is S0°02'02"E, 2624.85' (2625.20' CS# 83015) from the E 1/4 Sect. 12

REGISTERED
PROFESSIONAL
LAND SURVEYOR

Dennis R. Peoples
Dec 29, 2006

OREGON
JANUARY 1, 1988
DENNIS R. PEOPLES
2325

Dec 31 2008

12-27-06 1800

CS 2007 005