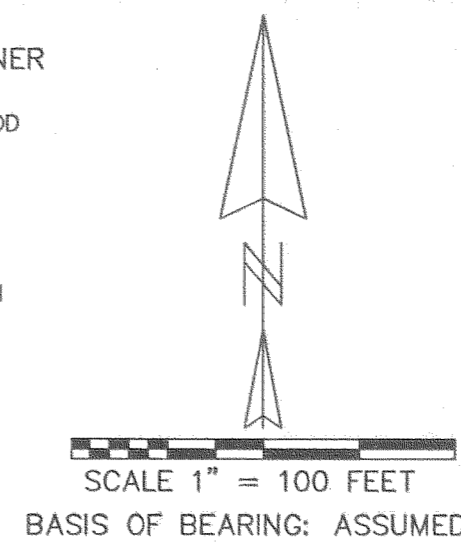
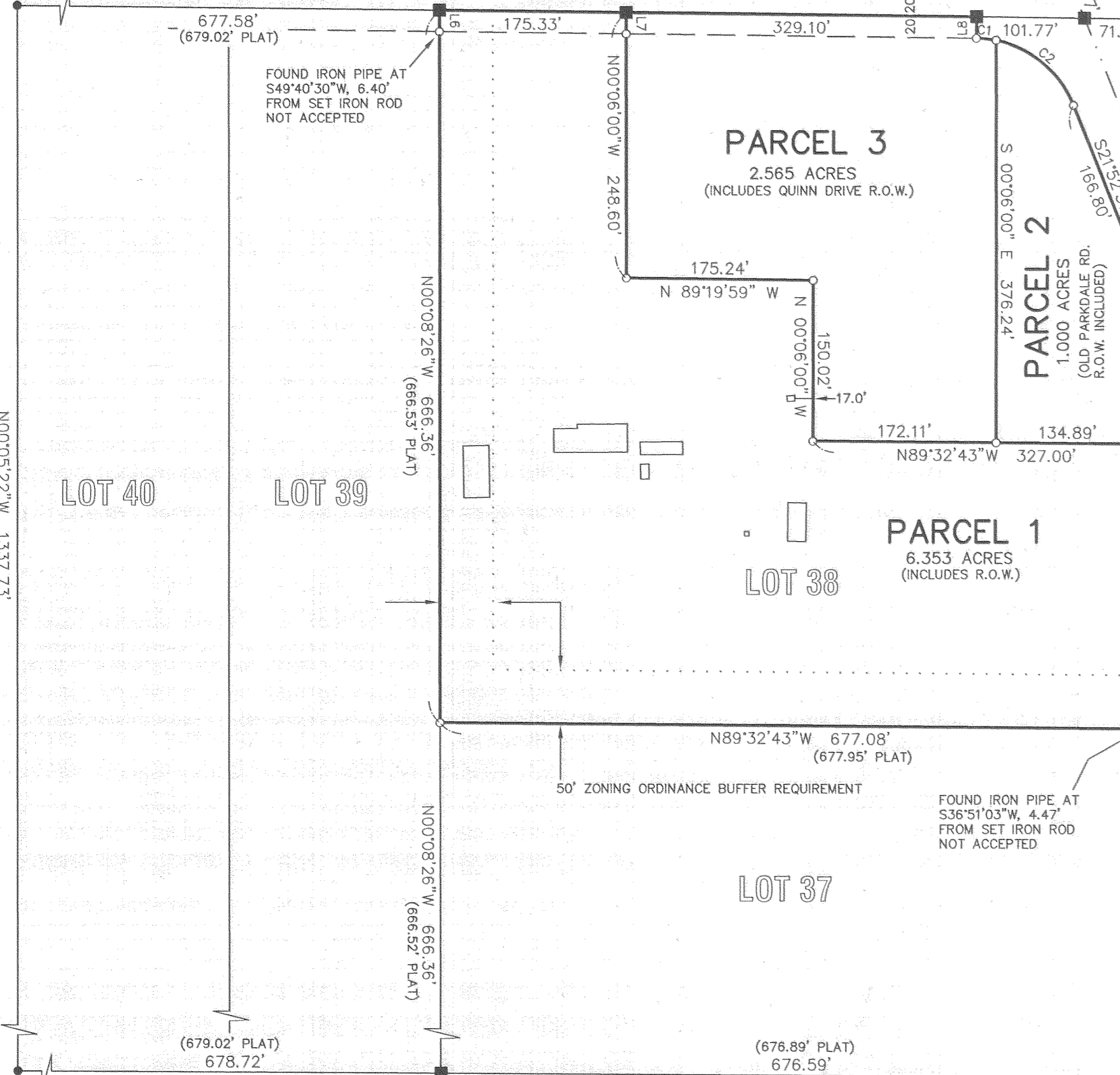


NORTHWEST CORNER
LOT 40
FOUND 1/2" IRON ROD
AS PER CS 90034

HIGHWAY STATION 202 + 19.8 P.O.T.

NORTHEAST CORNER
SECTION 30
FOUND 5/8" IRON ROD
IN MONUMENT CASE

HOOD RIVER COUNTY
SURVEYOR'S OFFICE
SURVEY NO. **CS2007003**
FILED DATE: **1-3-07**
BY: *Kevin Dowd*



REGISTERED
PROFESSIONAL
LAND SURVEYOR
Kevin Dowd
OREGON
JULY 26, 1989
KEVIN DOWD
2393
RENEW DATE: 12-31-07
DECEMBER 14, 2006

LINE TABLE		
LINE	LENGTH	BEARING
L1	29.96	N68°08'06"E
L2	29.96	N68°08'06"E
L3	40.00	N67°52'14"E
L4	40.00	N67°52'14"E
L5	20.00	N89°32'43"W
L6	20.00	N00°08'26"W
L7	20.00	N00°06'00"W
L8	20.00	S00°40'01"W
L9	53.91	S21°52'37"E
L10	20.00	N89°32'43"W

SOUTHWEST CORNER
LOT 40
FOUND 1/2" IRON ROD
AS PER CS 91038

NARRATIVE

THE PURPOSE OF THIS SURVEY IS TO PARTITION LOT 38, WOODWORTH ACRES INTO THREE PARCELS. LOT 38 BOUNDARIES WERE ESTABLISHED BY PRORATION BASED ON MONUMENTS FOUND AT THE NORTHEAST SECTION CORNER, EAST QUARTER CORNER, AND THE NORTHWEST AND SOUTHWEST CORNERS OF LOT 40. THE CENTERLINE OF DEE HIGHWAY WAS ESTABLISHED AT MID-POINT BETWEEN FOUND RIGHT OF WAY MONUMENTS AS SHOWN. THE HIGHWAY RIGHT OF WAY LINE WAS ESTABLISHED 40 FEET FROM SAID CENTERLINE, 20 FEET SOUTH OF THE NORTH SECTION LINE, AND BY HOLDING THE DEED CALL FOR A 100 FOOT RADIUS CURVE.

LEGEND

- SET 5/8" X 30" IRON ROD WITH YELLOW PLASTIC CAP MARKED "WYEAST LS 2393"
- FOUND MONUMENT AS NOTED
- ⊙ FOUND IRON PIPE
- CALCULATED POSITION
- (xxx) PLAT DATA

CURVE TABLE						
CURVE	DELTA ANGLE	RADIUS	ARC	TANGENT	CHORD	CHORD BEARING
C1	10°41'23"	100.00	18.66	9.36	18.63	N83°59'18"W
C2	56°45'59"	100.00	99.08	54.03	95.07	N50°15'37"W

EAST QUARTER CORNER
SECTION 30
FOUND 5/8" IRON ROD
IN MONUMENT CASE

MEASURE 37 PRECAUTIONARY NOTICE

THE LOTS/PARCELS ON THIS PLAT OR IN THIS INSTRUMENT OF TRANSFER OR CONVEYANCE WERE ALLOWED BY HOOD RIVER COUNTY AND IN THE STATE OF OREGON PURSUANT TO ORS 197.352 AND COUNTY RESOLUTION NO. 1346 ADOPTED NOVEMBER 29, 2004. HOOD RIVER COUNTY MAKES NO WARRANTIES AS TO TRANSFERABILITY OF THE LOTS OR PARCELS AND/OR DEVELOPMENT RIGHTS RELATED TO THEM.

PARTITION PLAT

LOT 38, WOODWORTH ACRES
LOCATED IN THE NORTHEAST QUARTER
OF SECTION 30
T1 NORTH, R10 EAST, W.M.
HOOD RIVER COUNTY, OREGON

FOR: RON GILBERT

Certified to be a true and correct copy of the ORIGINAL
Dept. of Records & Assessment
By: *Kevin Dowd* Deputy

WYEAST SURVEYS
KEVIN DOWD
4399 WOODWORTH DR.
MT HOOD, OR 97041
(541) 352-6065

Partition Plat # 200633P
Instrument received on the 29th
day of December 2006
at 2:01 P. M.
Heath Clay - Clerk
Hood River Director of Records
and Assessments

SURVEYOR'S CERTIFICATE:
Kevin Dowd
I say that I have correctly surveyed and marked with proper monuments the lands represented on this Partition Plat, the boundaries being described in instrument: BOOK 67, PAGE 90 RECORDED JUNE 20, 1960 TO RONALD V. GILBERT AND CHARLOTTE D. GILBERT HOOD RIVER COUNTY DEED RECORDS

DECLARATION:
We the owner(s) of the land shown herein, hereby declare that this division of land has been made with our free consent and in accordance with our desires.
Ronald V Gilbert 12-15-06
OWNER DATE

ACKNOWLEDGEMENTS:
This instrument was acknowledged before me on 15 day of Dec 2006
by *Ronald V Gilbert*

Annette Santacasa Dowd
Notary signature
Annette Santacasa Dowd
NOTARY PUBLIC - OREGON
COMMISSION No. 395865
My commission expires Sept 14 2009

Charlotte Deborah Gilbert
OWNER DATE
This instrument was acknowledged before me on 15 day of Dec 2006
by *Charlotte Deborah Gilbert*

Annette Santacasa Dowd
Notary signature
Annette Santacasa Dowd
NOTARY PUBLIC - OREGON
COMMISSION No. 395865
My commission expires Sept 14 2009

APPROVALS:
I hereby certify that all taxes and assessment due hereon have been fully paid as required by law.
Kevin Dowd
Hood River County Director of Budget and Finance

I hereby certify this partition was examined and approved as of this 15th day of DECEMBER, 2006
Ronald Gilbert
Hood River County Surveyor

I hereby certify this partition was examined and approved as of this 28th day of DECEMBER, 2006
Ym Benedict
Hood River County Planning Director

CS 2007 003