

FILED  
RECORDS AND ASSESSMENT  
HOOD RIVER CO.

2006 OCT 24 A 9:19

# PARTITION PLAT

SURVEY LOCATED IN THE SW 1/4 SECTION 26, T. 2N., R. 10E., W.M.  
COUNTY OF HOOD RIVER, STATE OF OREGON  
2N 10E 26BC TAX LOT 2900

FILED

OCT 27 2006

*Ronald Folts*  
COUNTY CLERK

PARTITION PLAT NO. 200622P

INSTRUMENT RECEIVED ON THE 24<sup>th</sup> DAY  
OF October, 2006 9:19 AT AM

*Reah Day-Clerk*  
HOOD RIVER COUNTY DIRECTOR OF RECORDS  
AND ASSESSMENTS

## SURVEYS CERTIFICATE

I, JAMES M. KLEIN, BEING FIRST DULY SWORN,  
DEPOSE AND SAY THAT I HAVE CORRECTLY  
SURVEYED AND MARKED WITH PROPER  
MONUMENTS THE LANDS AS DESCRIBED BY  
WARRANTY DEED, DOCUMENT NO. 20025635  
DATED 11-22-2002, RECORDED IN HOOD RIVER  
COUNTY RECORDS AS SHOWN ON THIS PLAT.

*James M. Klein* 10-18-06  
JAMES M. KLEIN PLS. 59002

## DECLARATION

THE OWNERS OF THE LAND SHOWN HEREIN,  
HEREBY DECLARE THAT THIS DIVISION OF  
LAND HAS BEEN MADE WITH OUR FREE  
CONSENT AND IN ACCORDANCE WITH MY  
DESIRES.

THE UNDERSIGNED HEREBY GRANTS A 10.00  
FOOT WIDE WATER LINE EASEMENT FOR THE  
USE AND BENEFIT OF EAST FORK  
IRRIGATION DISTRICT FOR IRRIGATION WATER  
AS SHOWN ON THIS PLAT.

*George E. Goin* 10/18/06  
GEORGE E. GOIN DATE

THIS INSTRUMENT WAS ACKNOWLEDGED BEFORE  
ME ON Oct 18 2006, BY THE ABOVE SIGNED

*Monique Myers*  
NOTARY SIGNATURE

*Monique Myers*  
NOTARY PUBLIC-(NAME)

STATE OF Oregon

COUNTY OF Hood River

COMMISSION NO. 40906

MY COMMISSION EXPIRES March 17, 2010

## ACKNOWLEDGMENTS AND APPROVALS

I HEREBY CERTIFY THAT ALL TAXES AND  
ASSESSMENT DUE HEREON HAVE BEEN FULLY  
PAID AS REQUIRED BY LAW.

*Candace A. Rowley*  
HOOD RIVER COUNTY TREASURER

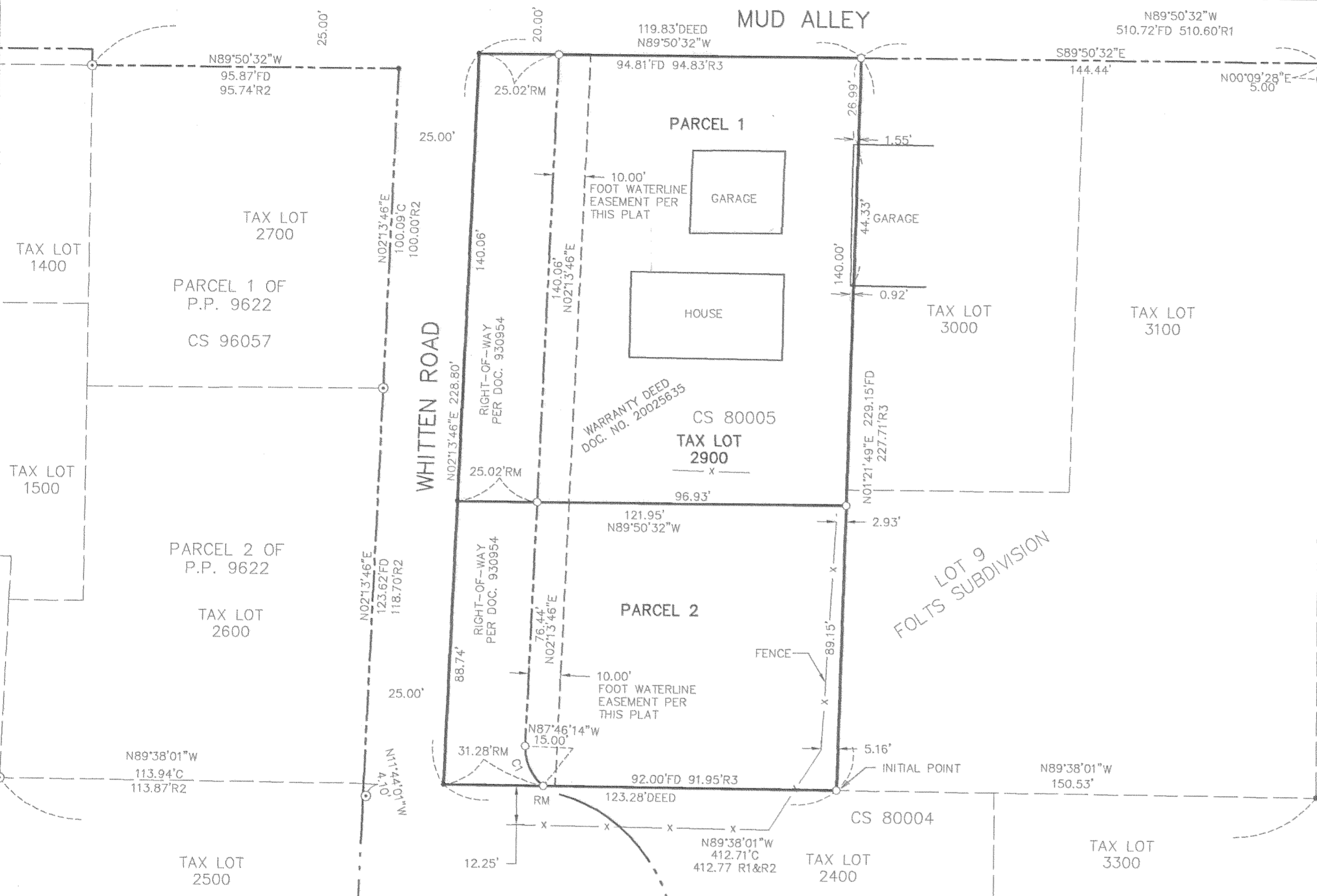
I HEREBY CERTIFY THIS PARTITION WAS  
EXAMINED AND APPROVED AS OF  
THIS 20<sup>th</sup> DAY OF October, 2006.

*Ronald Folts*  
HOOD RIVER COUNTY SURVEYOR

I HEREBY CERTIFY THIS PARTITION WAS  
EXAMINED AND APPROVED AS OF  
THIS 23<sup>rd</sup> DAY OF October, 2006.

*m. Benedict #06-239*  
HOOD RIVER COUNTY PLANNING DIRECTOR

Certified to be a true and  
correct copy of the Original  
Dept. of Records & Assessment  
by *R. Day* Deputy



CS 99013  
P.P. 9830  
PARCEL 1  
TAX LOT 3201

CS 2000 044  
P.P. 200015P  
PARCEL 1  
TAX LOT 3200

## LEGEND

- SET 5/8" X 30" REBAR W/ 1 1/4" YELLOW PLASTIC CAP MARKED (KLEIN&ASSOCIATES 59002LS)
- ⊙ FOUND 5/8" REBAR WITH PLASTIC CAP MARKED (OR 932 & WA 22098)
- ANGLE POINT NO MONUMENT FOUND OR SET
- CS RECORD OF SURVEY
- RM REFERENCE MONUMENT
- C COMPUTED DATA
- FD FOUND DATA
- R1 PARTITION PLAT NO. 9830 CS NO. 99013
- R2 PARTITION PLAT NO. 9622 CS NO. 96057
- R3 RECORD OF SURVEY NO. 80005

NOTE:  
ALL BEARINGS, DISTANCES, AND CURVE DATA SHOWN  
ARE FOUND OR SET, UNLESS OTHERWISE NOTED.

## NARRATIVE OF SURVEY

THE PURPOSE OF THIS SURVEY IS TO PARTITION  
THAT CERTAIN TRACT OF LAND DESCRIBED BY  
DOCUMENT NO. 20025635 ON FILE IN HOOD RIVER  
COUNTY OREGON, INTO TWO PARCELS AS SHOWN  
HEREIN.

THE WEST BOUNDARY LINE WAS ESTABLISHED BY  
HOLDING MONUMENTS AS SET BY PARTITION PLAT  
NO. 96057 ON THE WEST SIDE OF WHITTEN ROAD  
AND COMPUTING THE CENTERLINE OF WHITTEN ROAD.  
THE SOUTH BOUNDARY WAS ESTABLISHED BY  
HOLDING DEED DISTANCE. THE NORTH BOUNDARY  
WAS ESTABLISHED BY HOLDING THE SOUTH LINE OF  
MUD ALLEY AS ESTABLISHED BY PARTITION PLAT  
NO.S' 9622 AND 99013. THE EAST BOUNDARY WAS  
ESTABLISHED BY HOLDING THE DEED DISTANCES.

## EASEMENT NOTES:

- A 10.00 FOOT WIDE WATER LINE EASEMENT FOR THE  
USE AND BENEFIT OF THE ODELL WATER COMPANY  
AND EAST FORK IRRIGATION DISTRICT AS SHOWN ON  
THIS PLAT.
- RIGHT-OF-WAY EASEMENT TO THE HOOD RIVER  
ELECTRIC COOPERATIVE DOCUMENT NO. 962513  
(BLANKET EASEMENT)
- PUBLIC RIGHT-OF-WAY DOCUMENT NO. 930954  
(SHOWN ON THIS PLAT)

REGISTERED  
PROFESSIONAL  
LAND SURVEYOR

*James M. Klein*  
OREGON  
JULY 12, 2005  
JAMES M. KLEIN  
59002

Expires 6-30-2007

**Klein & Associates, Inc.**  
LAND SURVEYING  
1412 13th Street Suite 200  
Hood River, Oregon 97031  
Tel: (541)386-3322

SHEET 1 OF 1  
WILLAMETTE MERIDIAN  
HOOD RIVER COUNTY, OREGON

1/4 SEC T. R.  
26BC 2N. 10E.

## REFERENCE OF DEEDS

WARRANTY DEED DOCUMENT NO. 20025635

## REFERENCE SURVEYS

PARTITION PLAT NO. 9830, CS NO. 99013  
PARTITION PLAT NO. 9622 CS NO. 96057  
RECORD OF SURVEY CS NO. 80005



## BASIS OF BEARINGS

RECORD OF SURVEY NO. 99013



## CURVE TABLE

CURVE	RADIUS	ARC LENGTH	CHORD LENGTH	CHORD BEARING	DELTA ANGLE	TANGENT
C1	15.00'	14.23'	13.71'	N 24°57'13" W	54°21'58"	7.70'

## AREA NOTE:

PARCEL	ORIGINAL AREA	GROSS AREA	NET AREA
PARCEL 1	27822 SQ. FT.	16921 SQ. FT. 0.39 ACRES	13419 SQ. FT. 0.31 ACRES
PARCEL 2	0.64 ACRES	10902 SQ. FT. 0.25 ACRES	8658 SQ. FT. 0.20 ACRES

SURVEY PERFORMED FOR:  
GEORGE E. GOIN  
DATE: SEPTEMBER 2006  
PROJECT: 06-08-10  
FILE: 060810CS2.DWG  
DRAFT: 9-7-2006

**OWNER**  
GEORGE E. GOIN

KLEIN & ASSOCIATES, MAKES NO WARRANTY AS TO MATTERS OF  
UNWRITTEN TITLE, ADVERSE POSSESSION, ESTOPPEL, ACQUIESCENCE.

10-17-06 1610  
10-25-06 1400

CS 2006 097

