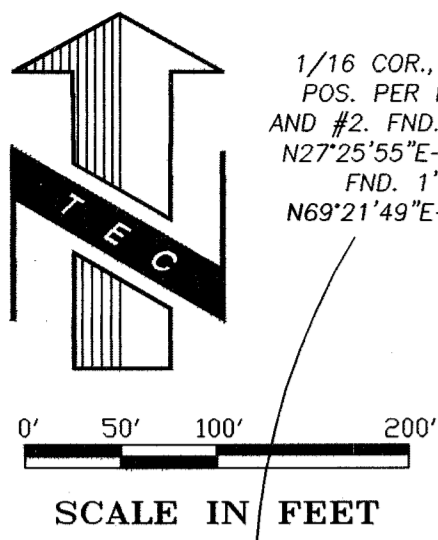


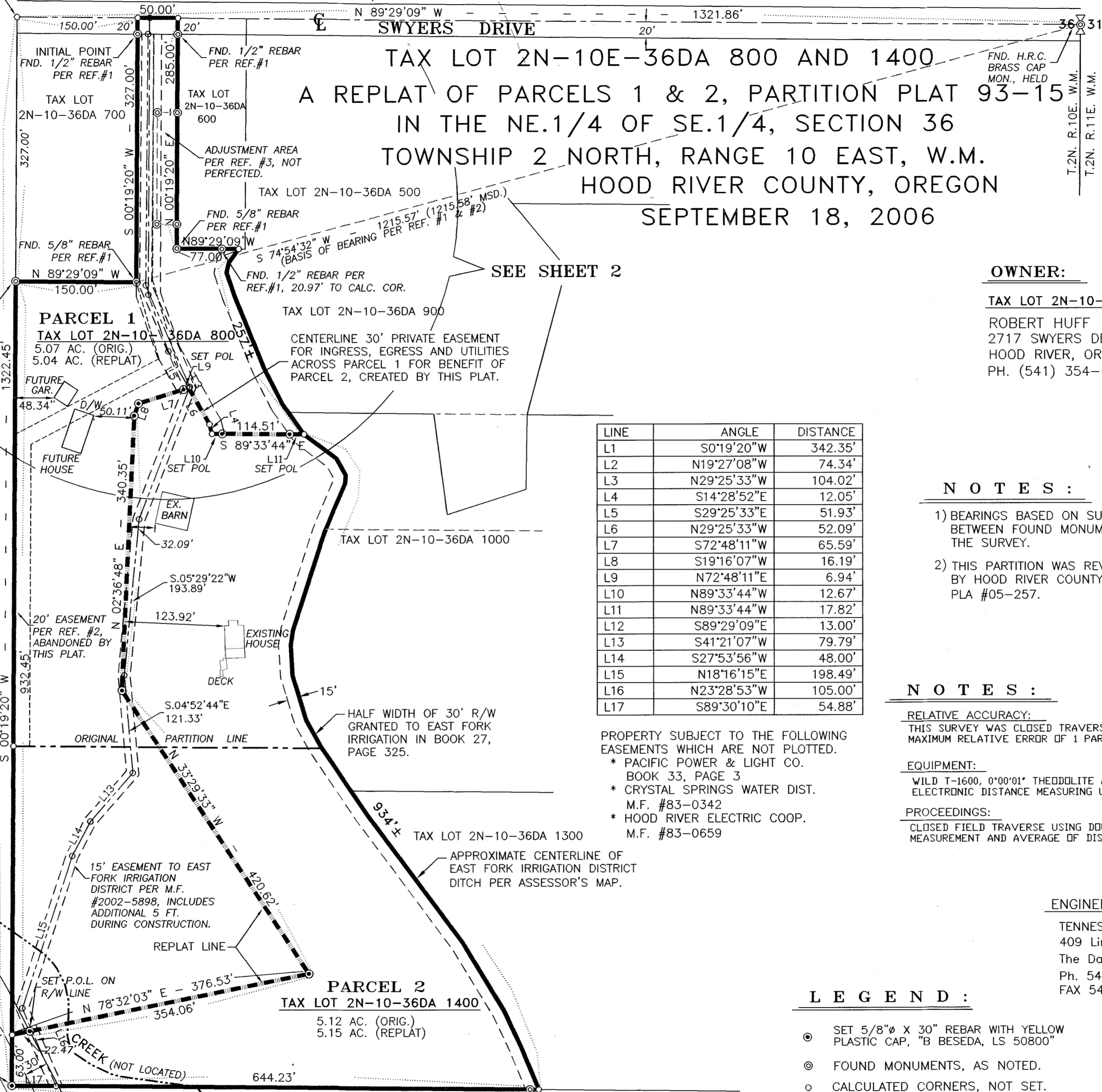
PARTITION PLAT

FILED
RECORDS AND ASSESSMENT
HOOD RIVER CO.
2006 OCT -6 A 9:45
FILED
OCT 12 2006
Robert Huff
COUNTY CLERK

RECORDING INFORMATION
Plat Number 200621P
Instrument received on the 6th
day of October, 2006,
at 9:45 A.M.
Joan Day
Hood River County Director of
Records and Assessments.



1/16 COR., CALC.
POS. PER REF.#1
AND #2. FND. AXLE
N27°25'55"E-3.23',
FND. 1" PIPE,
N69°21'49"E-3.63'



TAX LOT 2N-10E-36DA 800 AND 1400
A REPLAT OF PARCELS 1 & 2, PARTITION PLAT 93-15
IN THE NE.1/4 OF SE.1/4, SECTION 36
TOWNSHIP 2 NORTH, RANGE 10 EAST, W.M.
HOOD RIVER COUNTY, OREGON
SEPTEMBER 18, 2006

OWNER:
TAX LOT 2N-10-36DA 800 & 1400
ROBERT HUFF
2717 SWYERS DRIVE
HOOD RIVER, OREGON. 97041
PH. (541) 354-6234

SURVEYOR'S CERTIFICATE:
BENJAMIN B. BESEDA
being first duly sworn, depose and say that I
have correctly surveyed and marked with proper
monuments the lands represented on this
Partition Plat, the boundaries being described in
instrument #2004-0325, dated January 26, 2004
and instrument #96-1415, dated May 15, 1996
Hood River County Deed Records to
ROBERT HUFF

DECLARATION:
I, Robert Huff, the owner of the land shown
herein, hereby declare that this division of land
has been made with my free consent and in
accordance with my desires.
Robert Huff 9/20/06
Robert Huff Date

ACKNOWLEDGEMENT:
State of OREGON
County of HOOD RIVER
This instrument was acknowledged
before me on Sept 28, 2006
by ROBERT HUFF
Marilyn Battersby
(signature of notarial officer)
MARILYN BATTERSBY
(printed name of notarial officer)

COMMISSION No. 373838
MY COMMISSION EXPIRES 10-31-2007

APPROVALS:
I, hereby certify that I have examined the
Survey Data, Monuments and Easements and
hereby approve this plat on the 25th
day of SEPTEMBER, 2006.
Robert Huff
Hood River County Surveyor

I, hereby certify that all taxes and assessments
due hereon have been fully paid as required by
law and hereby approve this plat.
Benjamin B. Beseda
Hood River County Director of Budget and
Finance.
I hereby certify that this partition plat was
examined and approved as of this 6th day
of OCTOBER, 2006.
Planning File Number 05-257
M. Benedict
Hood River COUNTY Planning Director

- REFERENCES:**
- 1) SURVEY FOR DARLENE KEMPER BY DLC SURVEYING FILED JUNE 11, 1990 AS C.S. #90-038
 - 2) PARTITION PLAT 93-15 FOR ERIK AND TAMMY HALL BY DLC SURVEYING RECORDED MAY 21, 1993 FILED JUNE 14, 1993 AS C.S. 93-040
 - 3) PROPERTY BOUNDARY LINE ADJUSTMENT SURVEY BY TERRA SURVEYING FILED MARCH 29, 2002 AS C.S. #2002-015

LINE	ANGLE	DISTANCE
L1	S0°19'20"W	342.35'
L2	N19°27'08"W	74.34'
L3	N29°25'33"W	104.02'
L4	S14°28'52"E	12.05'
L5	S29°25'33"E	51.93'
L6	N29°25'33"W	52.09'
L7	S72°48'11"W	65.59'
L8	S19°16'07"W	16.19'
L9	N72°48'11"E	6.94'
L10	N89°33'44"W	12.67'
L11	N89°33'44"W	17.82'
L12	S89°29'09"E	13.00'
L13	S41°21'07"W	79.79'
L14	S27°53'56"W	48.00'
L15	N18°16'15"E	198.49'
L16	N23°28'53"W	105.00'
L17	S89°30'10"E	54.88'

- NOTES:**
- 1) BEARINGS BASED ON SURVEY REFERENCE No. 1 BETWEEN FOUND MONUMENTS AS SHOWN ON THE SURVEY.
 - 2) THIS PARTITION WAS REVIEWED AND APPROVED BY HOOD RIVER COUNTY PLANNING DEPT. AS PLA #05-257.

NOTES:
RELATIVE ACCURACY:
THIS SURVEY WAS CLOSED TRAVERSE WITH A MAXIMUM RELATIVE ERROR OF 1 PART IN 10,000.
EQUIPMENT:
WILD T-1600, 0°00'01" THEODOLITE AND WILD DI-2000 ELECTRONIC DISTANCE MEASURING UNIT.
PROCEEDINGS:
CLOSED FIELD TRAVERSE USING DOUBLED ANGLE MEASUREMENT AND AVERAGE OF DISTANCE READING.

PROPERTY SUBJECT TO THE FOLLOWING EASEMENTS WHICH ARE NOT PLOTTED.
* PACIFIC POWER & LIGHT CO. BOOK 33, PAGE 3
* CRYSTAL SPRINGS WATER DIST. M.F. #83-0342
* HOOD RIVER ELECTRIC COOP. M.F. #83-0659

ENGINEER / SURVEYOR:
TENNESON ENGINEERING CORP.
409 Lincoln Street,
The Dalles, Oregon. 97058
Ph. 541-296-9177
FAX 541-296-6657

- LEGEND:**
- ⊙ SET 5/8" X 30" REBAR WITH YELLOW PLASTIC CAP, "B" BESEDA, LS 50800"
 - ⊙ FOUND MONUMENTS, AS NOTED.
 - CALCULATED CORNERS, NOT SET.
 - SET P.K. NAIL OR AS NOTED.
 - POL POINT ON LINE
 - x- EXISTING FENCE LINE.
 - ==== REPLATTED PROPERTY LINE
 - ===== OWNERSHIP LINE
 - ORIGINAL PROPERTY LINE

REGISTERED PROFESSIONAL LAND SURVEYOR
Benjamin B. Beseda
OREGON
JULY 13, 1999
BENJAMIN B. BESEDA
50800
EXPIRES: 12/31/2007

TAX LOT	ORIGINAL	REPLAT
2N-10-36DA 800	5.07 AC.	5.04 AC.
2N-10-36DA 1400	5.12 AC.	5.15 AC.
TOTAL	10.19 AC.	10.19 AC.

ACREAGES SHOWN INCLUDE SWYERS DRIVE AND NEAL CREEK ROAD RIGHTS OF WAY AND ARE PARTIALLY BASED ON ASSESSOR'S MAPPING AND PRIOR SURVEYS.

Certified to be a true and correct copy of the ORIGINAL Dept. of Records & Assessment by *Joan Day*, Deputy

PARTITION PLAT

TAX LOT 2N-10E-36DA 800 AND 1400

A REPLAT OF PARCELS 1 & 2, PARTITION PLAT 93-15
IN THE NE.1/4 OF SE.1/4, SECTION 36
TOWNSHIP 2 NORTH, RANGE 10 EAST, W.M.

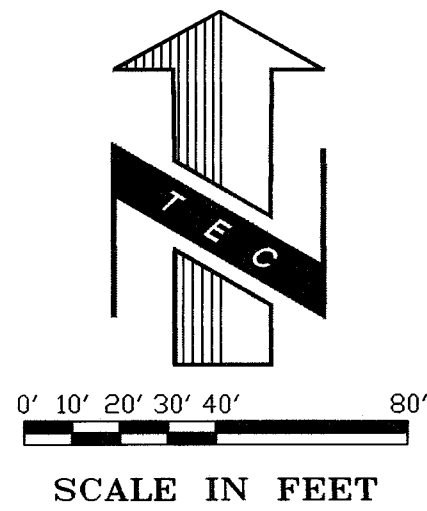
HOOD RIVER COUNTY, OREGON
SEPTEMBER 18, 2006

FILED

OCT 12 2006
Benjamin B. Beseda
COUNTY CLERK

RECORDING INFORMATION
Plat Number 200621P
instrument received on the
16th day of October
2006, at 9:45 A.M.

Deah Day
Hood River County Director of
Records and Assessments.



LINE	ANGLE	DISTANCE
L1	S0°19'20"W	342.35'
L2	N19°27'08"W	74.34'
L3	N29°25'33"W	104.02'
L4	S14°28'52"E	12.05'
L5	S29°25'33"E	51.93'
L6	N29°25'33"W	52.09'
L7	S72°48'11"W	65.59'
L8	S19°16'07"W	16.19'
L9	N72°48'11"E	6.94'
L10	N89°33'44"W	12.67'
L11	N89°33'44"W	17.82'
L12	S89°29'09"E	13.00'
L13	S41°21'07"W	79.79'
L14	S27°53'56"W	48.00'
L15	N18°16'15"E	198.49'
L16	N23°28'53"W	105.00'
L17	S89°30'10"E	54.88'
L18	S89°40'40"E	25.00'
L19	S0°19'20"W	138.20'
L20	S89°40'40"E	25.00'

I HEREBY CERTIFY THAT THIS PLAT IS A TRUE
AND EXACT COPY OF THE ORIGINAL PLAT.
Benjamin B. Beseda 9/18/06
BENJAMIN B. BESEDA DATE

LEGEND:

- SET 5/8" X 30" REBAR WITH YELLOW PLASTIC CAP, "B BESEDA, LS 50800"
- ⊙ FOUND MONUMENTS, AS NOTED.
- CALCULATED CORNERS, NOT SET.
- SET P.K. NAIL OR AS NOTED.
- POL POINT ON LINE
- X— EXISTING FENCE LINE.

- — — REPLATTED PROPERTY LINE
- — — OWNERSHIP LINE
- — — ORIGINAL PROPERTY LINE

OWNER:

TAX LOT 2N-10-36DA 800 & 1400
ROBERT HUFF
2717 SWYERS DRIVE
HOOD RIVER, OREGON. 97041
PH. (541) 354-6234

TAX LOT	ORIGINAL	REPLAT
2N-10-36DA 800	5.07 AC.	5.04 AC.
2N-10-36DA 1400	5.12 AC.	5.15 AC.
TOTAL	10.19 AC.	10.19 AC.

ACREAGES SHOWN INCLUDE SWYERS DRIVE AND NEAL CREEK ROAD RIGHTS OF WAY AND ARE PARTIALLY BASED ON ASSESSOR'S MAPPING AND PRIOR SURVEYS.

NARRATIVE:

THE PURPOSE OF THIS SURVEY WAS TO COMPLETE A REPLAT OF PARCELS 1 AND 2 OF PARTITION PLAT 93-15, BEING TAX LOTS 2N-10-36DA 800 AND 1400, RESPECTIVELY.

IN THE FIELD, MONUMENTS WERE FOUND AS SHOWN FROM THE REFERENCE SURVEYS. A COMPUTER COORDINATE MODEL WAS CREATED OF PARTITION PLAT 93-15. THE FOUND MONUMENTS WERE THEN ROTATED AND TRANSLATED INTO THE MODEL, AS SHOWN ON THE SURVEY. THIS RESULTED WITH A GOOD FIT TO ALL OF THE FOUND MONUMENTS. THE CENTERLINE OF THE EAST FORK IRRIGATION DISTRICT DITCH WAS NOT SURVEYED IN THE FIELD. THE POSITION SHOWN IS PER THE REFERENCE SURVEYS AND ASSESSOR MAPPING. WITH RESOLUTION OF THE EXTERIOR BOUNDARY OF THE SUBJECT PROPERTIES, THE LINE BETWEEN TAX LOTS 800 AND 1400 WAS REPLATTED AS SHOWN TO CREATE TWO NEW PROPERTIES OF SLIGHTLY OVER 5 ACRES EACH, PER LANDOWNER'S DIRECTION.

SET MONUMENTS ARE 5/8" X 30" REBAR WITH YELLOW PLASTIC CAP INSCRIBED "B BESEDA PLS 50800".

SURVEYOR'S CERTIFICATE:

I, BENJAMIN B. BESEDA, REGISTERED LAND SURVEYOR NO. 50800 IN THE STATE OF OREGON, BEING FIRST DULY SWORN, DEPOSE AND SAY THAT I HAVE CORRECTLY EXECUTED ACCORDING TO ORS CHAPTER 92 AND THE HOOD RIVER COUNTY SUBDIVISION ORDINANCE, A PARTITION PLAT LYING IN PARCELS 1 AND 2 OF PARTITION PLAT 93-15 IN THE NORTHEAST 1/4 OF THE SOUTHEAST 1/4 OF SECTION 36, TOWNSHIP 2 NORTH, RANGE 10 EAST, WILLAMETTE MERIDIAN, HOOD RIVER COUNTY, OREGON. THE INITIAL POINT FOR SAID PLAT IS THE 1/2" REBAR WITH YELLOW PLASTIC CAP INSCRIBED "LS 1028" FOUND AT THE NORTHWEST CORNER OF SAID PARCEL 1. THE PLATTED PROPERTY IS DESCRIBED AS FOLLOWS.

PARCEL 1 AND PARCEL 2 OF PARTITION PLAT 93-15 AS RECORDED MAY 21, 1993 RECORDS OF HOOD RIVER COUNTY.

CONTAINS 10.19 ACRES MORE OR LESS.

NOTES:

RELATIVE ACCURACY:
THIS SURVEY WAS CLOSED TRAVERSE WITH A MAXIMUM RELATIVE ERROR OF 1 PART IN 10,000.

EQUIPMENT:
WILD T-1600, 0°00'01" THEODOLITE AND WILD DI-2000 ELECTRONIC DISTANCE MEASURING UNIT.

PROCEEDINGS:
CLOSED FIELD TRAVERSE USING DOUBLED ANGLE MEASUREMENT AND AVERAGE OF DISTANCE READING.

ENGINEER / SURVEYOR:

TENNESON ENGINEERING CORP.
409 Lincoln Street,
The Dalles, Oregon. 97058
Ph. 541-296-9177
FAX 541-296-6657

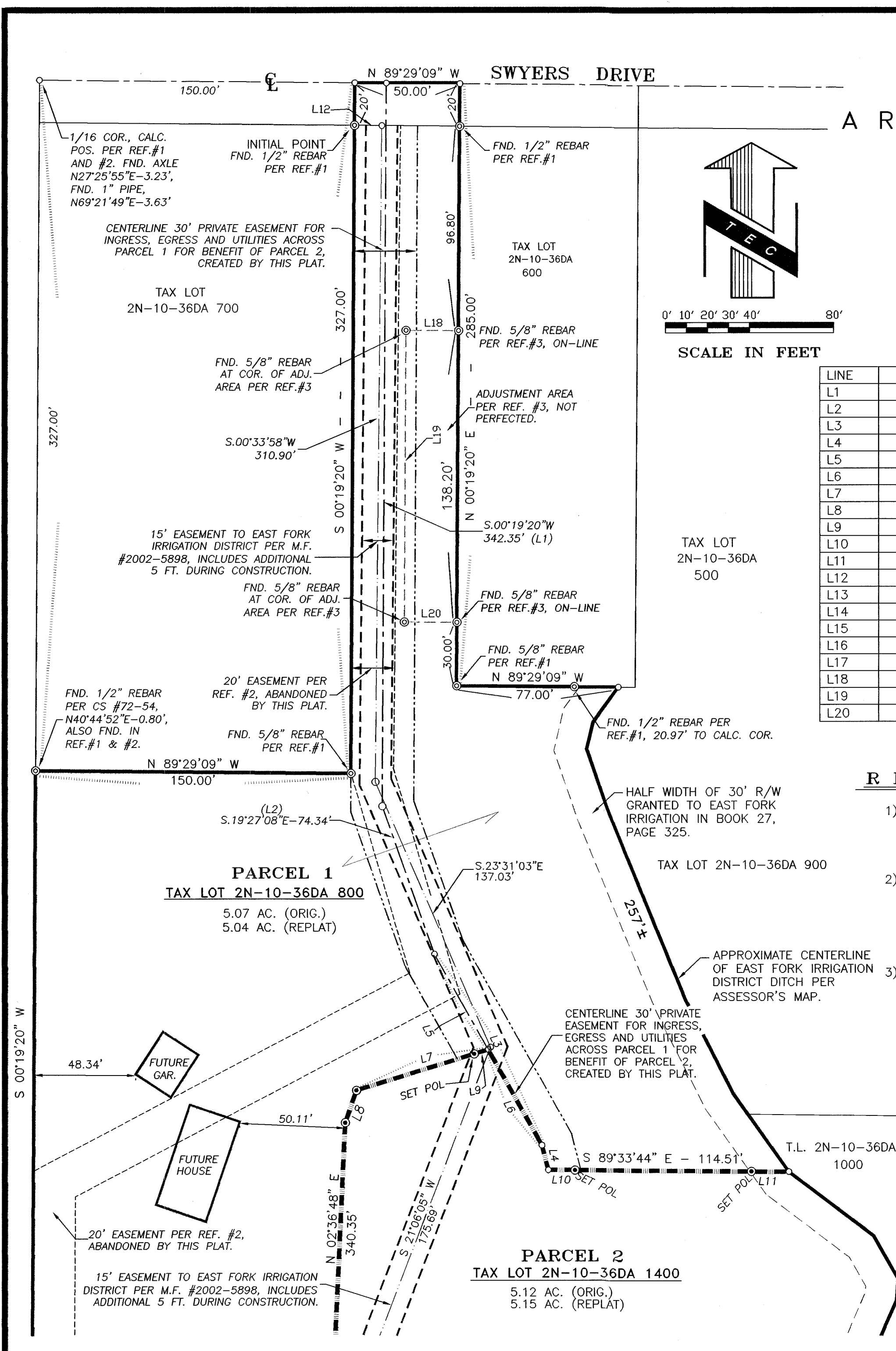
REGISTERED
PROFESSIONAL
LAND SURVEYOR
Benjamin B. Beseda
OREGON
JULY 13, 1999
BENJAMIN B. BESEDA
50800

EXPIRES: 12/31/2007

SHEET 2 OF 2

CS 2006 088.2

W.O. #12006par



PARCEL 1
TAX LOT 2N-10-36DA 800
5.07 AC. (ORIG.)
5.04 AC. (REPLAT)

PARCEL 2
TAX LOT 2N-10-36DA 1400
5.12 AC. (ORIG.)
5.15 AC. (REPLAT)