

Boundary Line Adjustment

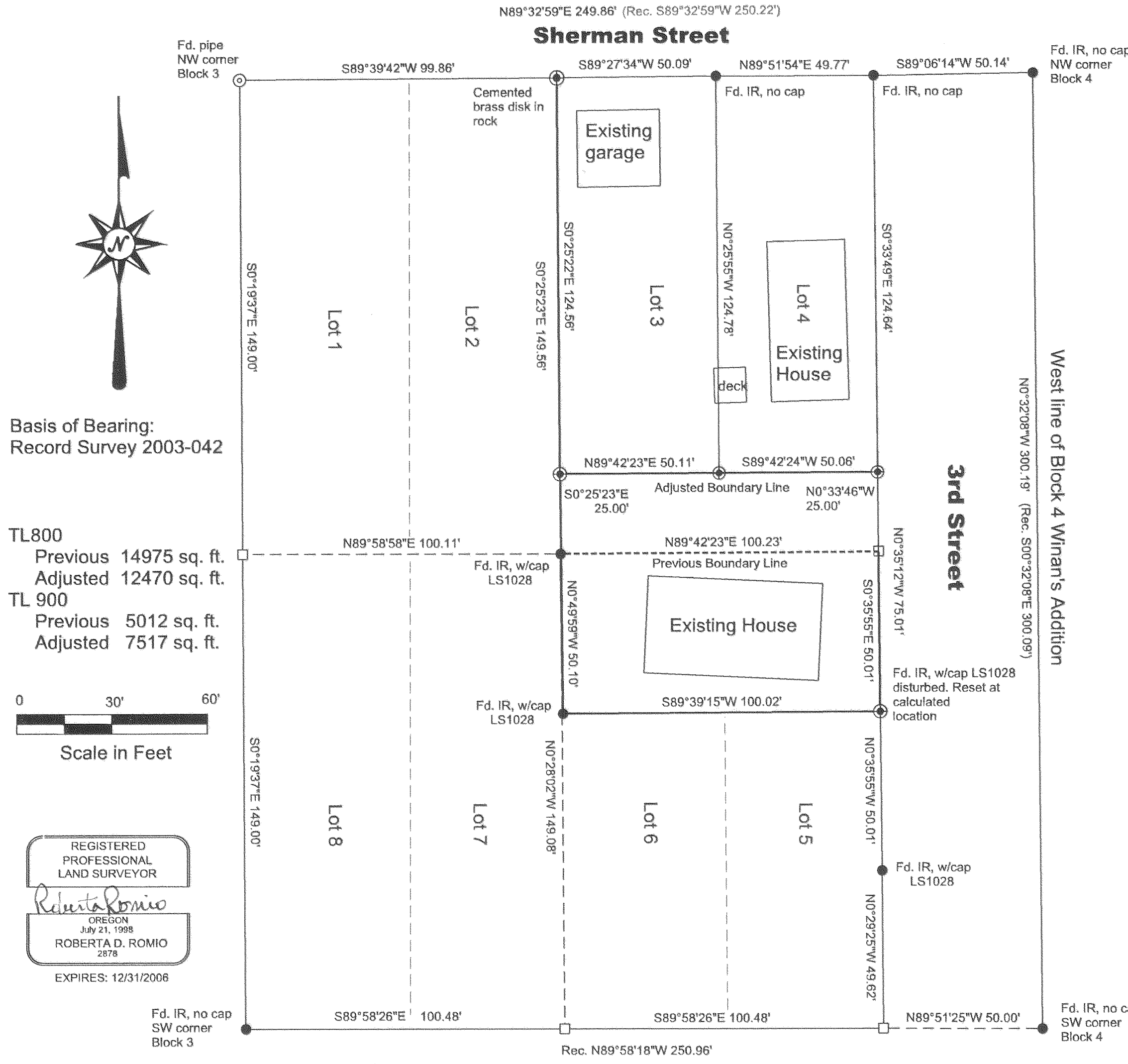
located in Block 3 of the Winan's Addition

to the City of Hood River, Hood River County, Oregon

NE 1/4 Section 36, Township 3 North, Range 10 East, W.M.

FILED

OCT 12 2006
Roberta D. Romio
 COUNTY CLERK

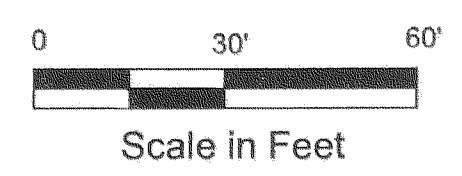


History and Narrative

The purpose of this survey was to adjust the line between Lots 3 and 4, Block 3, Winan's Addition to Hood River (currently TL800) and the north 50 feet of Lots 5 and 6, Block 3, Winan's Addition (currently TL900). The boundary of Lots 3 and 4 was surveyed and monumented by LS 932 in 1971 (Hood River County record survey 1184). In 1988, LS 1028 surveyed Lots 5 and 6, dividing them into 3 parcels, monumenting the perimeter of the northerly two (Hood River County record survey 88011). The 1988 survey did not recover the monuments set by LS932 on the south line of Lots 3 and 4, setting new monuments, 1/2" iron rods, at these locations. In 2003, LS 932 surveyed the south 50 feet of Lots 5, 6, 7 and 8, Block 3 of the Winan's Addition (Hood River County record surveys 2003-041, 042). The 1988 and 2003 surveys agree with the west line of Block 4 and a recovered an iron pipe at the northwest corner of Block 3. However, the 1988 survey calculated the southwest corner of Block 3 based on record information. The 2003 survey found and accepted a 3/4" iron rod for the location of the southwest corner of Block 3. This survey is based on the 2003 surveys using the found iron rod at the southwest corner of Block 3. We recovered the northwest corners of Blocks 3 and 4 as found by the 1988 and 2003 surveys. Also recovered was an iron rod at the northeast corner of Block 3 as shown on 1971 survey. Monuments set by LS1028 in 1988 were recovered as shown, varying from the calculated locations by +/-0.2 foot and were therefore accepted for the west boundary of tax lot 900. The southeast corner of tax lot 900 was found 1.3 feet from the record location, and appeared most likely disturbed by construction. This corner was reset based on the 2003 survey information. A large rock now lies at the record location of the northeast corner of tax lot 900 and no monument was recovered. Bearings and distances shown are to the found and accepted monuments, with new line locations determined by holding the perimeter of Block 3 as established by the 2003 surveys.

Basis of Bearing:
 Record Survey 2003-042

TL800
 Previous 14975 sq. ft.
 Adjusted 12470 sq. ft.
 TL 900
 Previous 5012 sq. ft.
 Adjusted 7517 sq. ft.



REGISTERED
 PROFESSIONAL
 LAND SURVEYOR

 OREGON
 July 21, 1998
 ROBERTA D. ROMIO
 2878
 EXPIRES: 12/31/2006

TANGLEWOOD SURVEYING
 PO Box 194 Underwood, WA. 98651
 509-493-8500
 email: tanglewood@gorge.net
 September 2006

Property Zone Designation
 Urban High Density Residential (R-3)

- REFERENCES**
- Hood River County Deed records
 - 20002500
 - 20063597
 - Hood River County Record Surveys
 - CS 1181
 - CS 1184
 - CS 88011
 - CS2003- 041,042,043
 - City of Hood River Planning
 Boundary Adjustment file 2006-54

- LEGEND**
- ⊙ Found Iron Pipe
 - Found Iron rod as noted
 - Calculated position not found or set
 - ⊗ Set 5/8" Iron rod w/red plastic cap "OR PLS 2878" or as noted

SURVEYOR'S CERTIFICATE

I, Roberta D. Romio, certify and say that I have correctly surveyed and marked with proper monuments the lands represented on this plat, the boundaries being described in instrument no. 20002500, Hood River County records, conveyed to Orhan and Marcia Beckman July 7, 2000, and instrument no. 20063597, conveyed to Orhan and Marcia Beckman July 18, 2006.

3N 10E 36AB 800, 900

Hand: 10-2-06 1030

C 9 2006 083