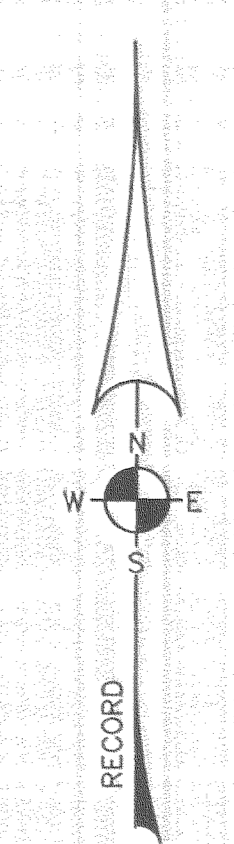
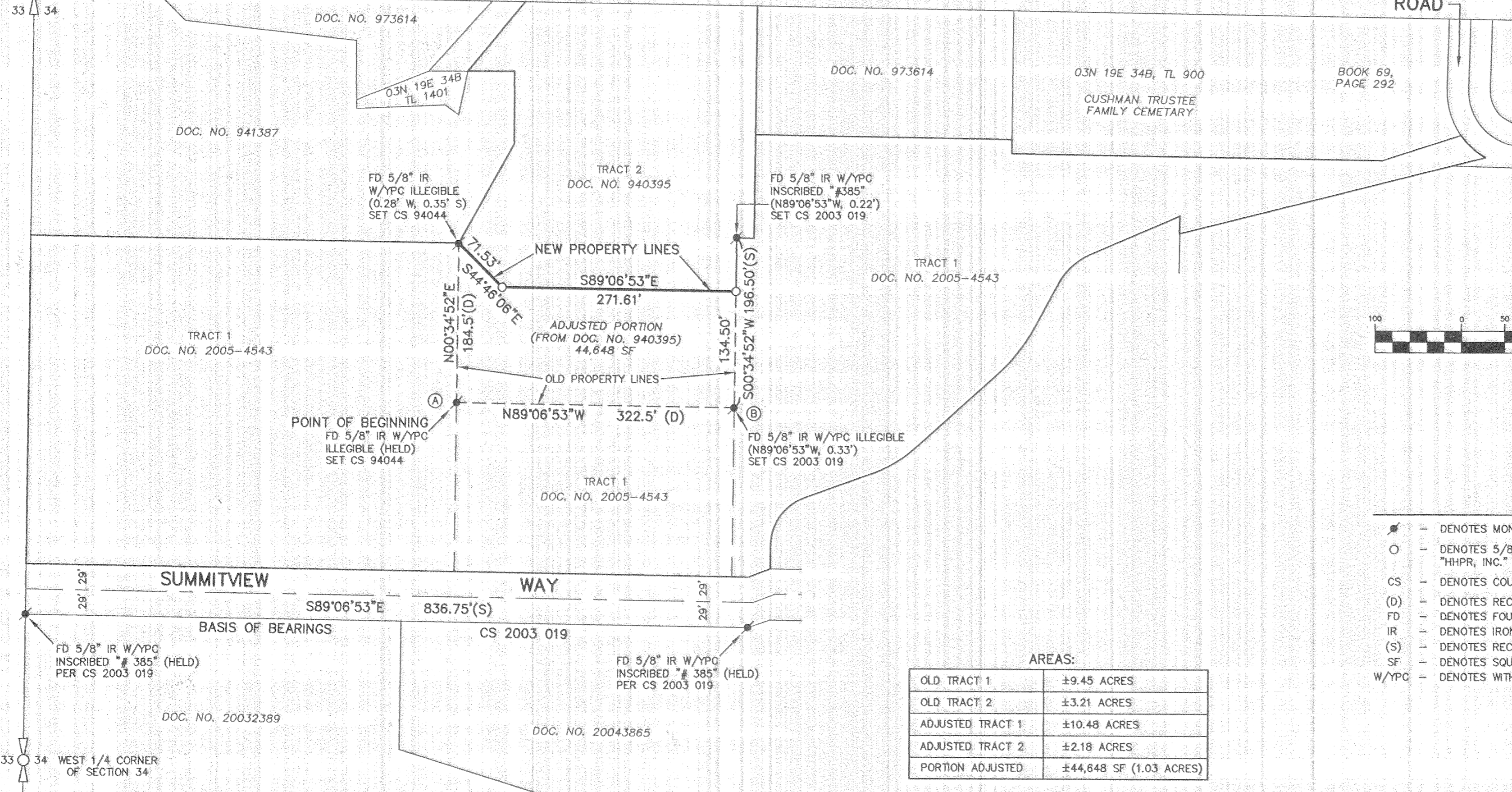


RECORD OF SURVEY FOR PROPERTY LINE ADJUSTMENT

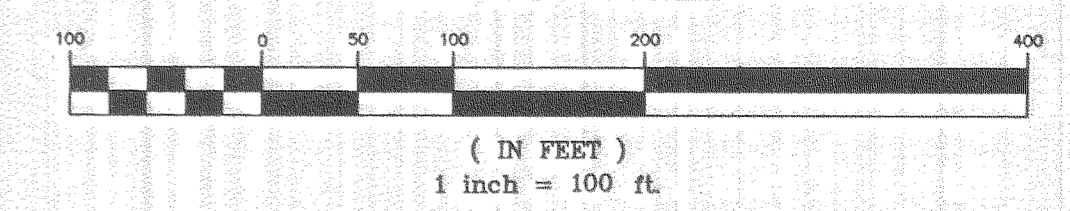
LOCATED IN THE NORTHWEST ONE-QUARTER OF
SECTION 34, TOWNSHIP 3 NORTH, RANGE 10 EAST, W.M.,
HOOD RIVER COUNTY, OREGON

SURVEYED: JANUARY, 2006
JOB OLM-06

28 27
33 34
NORTHWEST CORNER
SECTION 34



GRAPHIC SCALE



LEGEND:

- ⊕ - DENOTES MONUMENT FOUND AS NOTED
- - DENOTES 5/8" X 30" IR WITH ORANGE PLASTIC CAP INSCRIBED "HHPR, INC." SET 02/17/2006
- CS - DENOTES COUNTY SURVEY, HOOD RIVER COUNTY SURVEY RECORDS
- (D) - DENOTES RECORD DATA DOCUMENT NO. 940395
- FD - DENOTES FOUND
- IR - DENOTES IRON ROD
- (S) - DENOTES RECORD DATA CS 2003-019
- SF - DENOTES SQUARE FEET
- W/YPC - DENOTES WITH YELLOW PLASTIC CAP

AREAS:

OLD TRACT 1	±9.45 ACRES
OLD TRACT 2	±3.21 ACRES
ADJUSTED TRACT 1	±10.48 ACRES
ADJUSTED TRACT 2	±2.18 ACRES
PORTION ADJUSTED	±44,648 SF (1.03 ACRES)

NARRATIVE:

THE PURPOSE OF THIS SURVEY IS TO FACILITATE A PROPERTY LINE ADJUSTMENT AS APPROVED BY THE HOOD RIVER COUNTY PLANNING & BUILDING SERVICES DEPARTMENT PROPERTY LINE ADJUSTMENT # 05-371.

MONUMENTS FOUND ON THE SOUTH SIDE OF SUMMITVIEW WAY WERE HELD FOR THE BASIS OF BEARINGS OF SOUTH 89°06'53" EAST PER CS 2003 019, A PROPERTY LINE ADJUSTMENT AND PARTITION PLAT.

THE SOUTH LINE WAS LOCATED BY HOLDING THE MONUMENT FOUND AT (A) AND THE MONUMENT FOUND AT (B) FOR LINE, AT THE RECORD BEARING AND DISTANCE PER DEED.

THE WEST LINE WAS ESTABLISHED BY HOLDING THE MONUMENT AT (A) WITH THE RECORD ANGLE FROM THE SOUTH LINE, AT THE RECORD DISTANCE PER DEED.

THE EAST LINE WAS LOCATED BY HOLDING THE EAST END OF THE PREVIOUSLY LOCATED SOUTH LINE AT THE RECORD ANGLE FROM THE SOUTH LINE WITH THE RECORD DISTANCE FROM CS 2003 019.

THE NORTH LINES WERE LOCATED AND MONUMENTED AT THE REQUEST OF THE PROPERTY OWNER.

TAX ASSESSOR PARCELS:

03N 10E 34B, TL 700/1200

REFERENCES:

- SURVEYS:
CS 94044
CS 2000 009
CS 2000 053
CS 2003 109
- DOCUMENTS:
940395
941387
2005-4543

REGISTERED
PROFESSIONAL
LAND SURVEYOR

Paul W. Perry 2/21/06

OREGON
JANUARY 12, 1999
PAUL W. PERRY
58587 LS

EXP. 12-31-06

SURVEY PREPARED FOR:
RANDY OLMEAD
MOUNTAIN VIEW RANCH HR, LLC
P.O. BOX 224
HOOD RIVER, OR 97031

Harper Houf Peterson Righellis Inc.
ENGINEERS • PLANNERS • SURVEYORS
5200 SW MACADAM AVENUE, SUITE 580, PORTLAND, OR 97239
TEL 503.221.1131 www.hhpr.com FAX 503.221.1171

FILED

MAR 9 2006
Paul W. Perry
SURVEYOR

Revised 2-21-06 1630

CS 2006 018