

CORNER RESTORATION REPORT

SECTION 14, 15, 22 & 23 TOWNSHIP 2 NORTH RANGE 7 EAST
 COUNTY MULTNOMAH & HOOD RIVER DATE SEPTEMBER 29, 2005

CORNER DESIGNATION:

WITNESS CORNER 220' SOUTH OF SECTION CORNER COMMON TO SECTIONS 14, 15, 22 AND 23.

CORNER STATUS / HISTORY:

THIS CORNER WAS ESTABLISHED IN 1934 BY THE U.S. ARMY CORPS OF ENGINEERS, AS REPORTED IN SN G-15/7. A 1-1/2" IRON PIPE WITH BRASS CAP WAS SET FOR THE CORNER. ON SEPTEMBER 15, 1958 HOMER G. BURSSELL, DEPUTY COUNTY SURVEYOR, FOUND THE IRON PIPE WITH BRASS CAP UNDISTURBED, AS REPORTED IN B.T. C-348. HE MARKED ONE BEARING TREE AND CHISELED CROSSES INTO TWO NEARBY BOULDERS FOR REFERENCES.

ON SEPTEMBER 25, 1970 A MULTNOMAH COUNTY FIELD CREW UNDER THE SUPERVISION OF ROBERT H. WARNER, DEPUTY DIRECTOR OF PUBLIC WORKS, FOUND THE CORNER MONUMENT OUT OF POSITION AND BURIED BENEATH SEVERAL FEET OF FILL MATERIAL, AS REPORTED IN B.T. E-252 AND SN 32949. ONE C-348 REFERENCE WAS ALSO FOUND. A CONCRETE MONUMENT WITH BRASS CAP WAS SET FOR THE CORNER "FROM RUNNING STATE HIGHWAY INFORMATION." THE SURVIVING C-348 REFERENCE WAS TIED, ONE BEARING TREE WAS MARKED AND FOUR IRON PIPE REFERENCES WERE SET.

ON APRIL 6, 1992 A MULTNOMAH COUNTY FIELD CREW UNDER THE SUPERVISION OF HAROLD J. RUSSELL, DEPUTY COUNTY SURVEYOR, FOUND THE CORNER MONUMENT UNDISTURBED. ONE SURVIVING C-348 REFERENCE AND ALL E-252 REFERENCES WERE FOUND AND TIED. NO REPORT OF THIS VISIT WAS FILED.

PREVIOUS RENEWALS / SURVEYS, ETC.:

SN G15/7, SN 32949; B.T. BOOK-PAGE: C-348, E-252.

MONUMENT(S) & ACCESSORIES FOUND:

- (A) FOUND: 6" X 6" CONCRETE POST WITH 4-1/4" BRASS DISC, MARKED AS SHOWN BELOW (E-252, SN 32949), UP 0.5'.
 - (B) MONUMENT WAS FOUND OUT OF POSITION AND WAS RESET, AS DESCRIBED BELOW.
 - (C) FOUND: 3/4" IRON PIPE WITH YPC (E-252), DOWN 0.1'.
 - (D) FOUND: 3/4" IRON PIPE WITH YPC (E-252), LEANING SOUTHERLY, DOWN 0.1'.
 - (E) FOUND: 3/4" IRON PIPE WITH YPC (E-252), LEANING SOUTHERLY, FLUSH.
 - (F) FOUND: 3/4" IRON PIPE WITH YPC (E-252), LEANING NORTHEASTERLY, FLUSH.
 - (G) FOUND: 25" X 5" EXPOSED PORTION OF BOULDER WITH CHISELED "X" AND LETTERS "CSBO" (C-348) ON TOP.
- FOUND: 25" FIR WITH HEALED FACE (14" FIR PER E-252). CHOPPED INTO TREE TO EXPOSE LARGE RAILROAD SPIKE WITH PUNCH MARK RECESED 0.5" INSIDE TRUNK. SET YELLOW LOCATION TAG ON TREE.

MONUMENT SET:

AS WAS NOTED ABOVE, THE CORNER MONUMENT WAS FOUND OUT OF POSITION. IT WAS RESET HOLDING RECORD DISTANCES TO REFERENCES (B), (C) AND (G) PER THE MULT. CO. VISIT OF 4/6/1992. AFTER BEING RESET, THE MONUMENT WAS MOVED S21°51'06"W, 0.11' FROM THE POSITION IN WHICH IT WAS FOUND.

NEW ACCESSORIES:

B.T. = BEARING TREE
 SN = SURVEY NUMBER, MULTNOMAH COUNTY SURVEY RECORDS
 YPC = YELLOW PLASTIC CAP MARKED "MULT. CO. SURVEY"

LOCATION & COMMENTS:

SET: 6 FOOT WHITE CARSONITE POST WITH STANDARD "SURVEY MARKER" DECAL - S20°W, 2.0'.

THE CORNER MAY BE ACCESSED FROM THE WESTBOUND LANES OF THE I-84 FREEWAY. AT MILEPOST 41.9 FROM THE WESTERLY END OF A BRIDGE, FOLLOW A GRAVEL RAILROAD ACCESS ROAD NORTHEASTERLY FOR 0.35 MILE TO THE CORNER, LOCATED 130'± NORTH OF THE ROAD AND 50'± SOUTH OF THE SOUTH BANK OF THE COLUMBIA RIVER. APPROXIMATE LOCATION PER ETREX VISTA HANDHELD G.P.S. RECEIVER IS LATITUDE: 45°38'47.3" NORTH, LONGITUDE: 121°55'19.6" WEST. THE PRECISION OF THIS RECEIVER IS ESTIMATED TO BE 50'±.

BY: MULTNOMAH COUNTY SURVEYOR'S OFFICE
 1600 S.E. 190TH AVE.
 PORTLAND, OR 97233

CREW: NICHOLLS, KAHSAY, KRANZ

FIELD BOOK: CORNER BOOK 26, PAGE 70

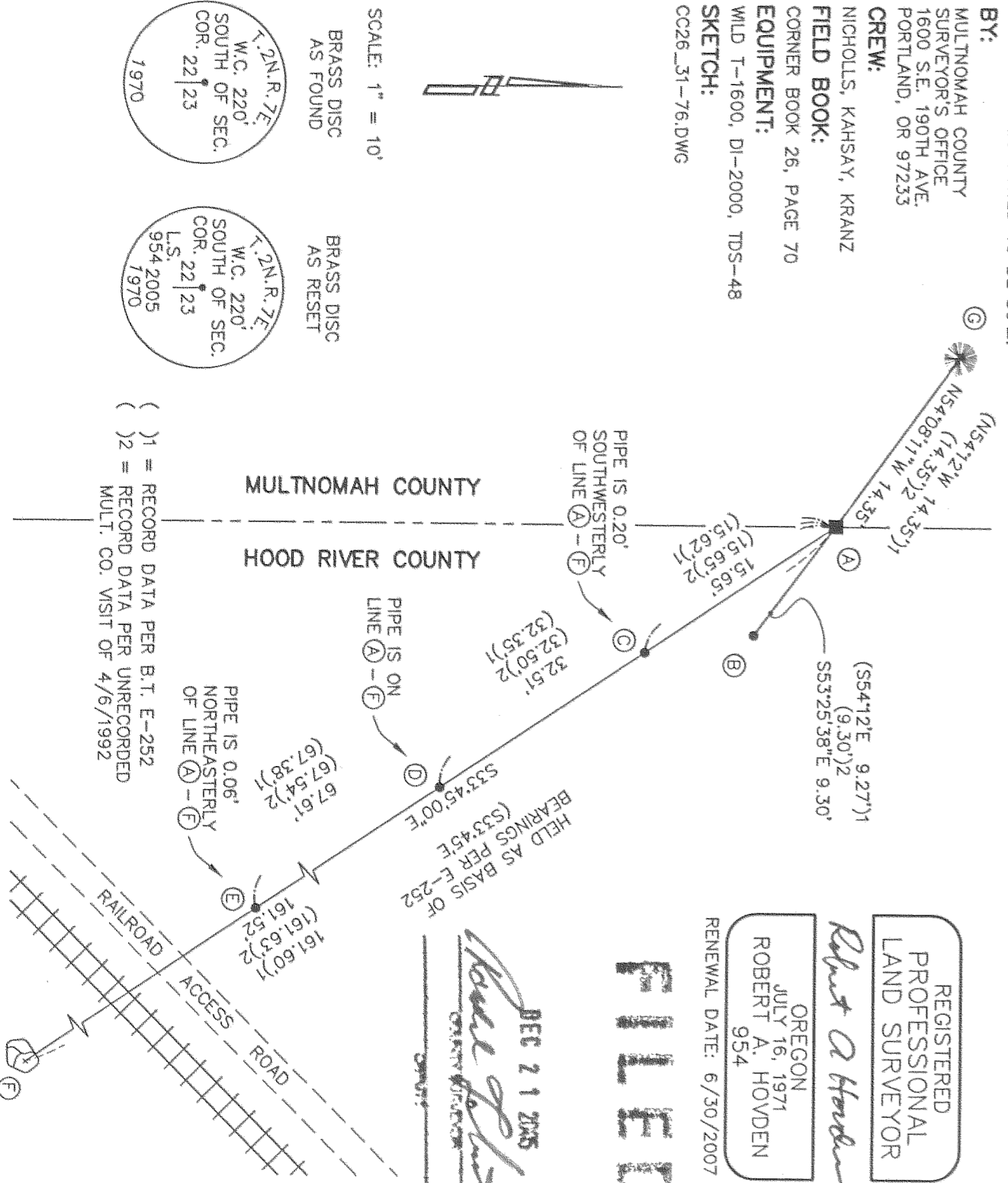
EQUIPMENT: WILD T-1600, DI-2000, TDS-48

SKETCH: CC26_31-76.DWG

REGISTERED PROFESSIONAL LAND SURVEYOR
Robert A. Hovden
 OREGON
 JULY 16, 1971
 ROBERT A. HOVDEN
 954
 RENEWAL DATE: 6/30/2007

FILED

DEC 21 2005
Robert A. Hovden
 COUNTY SURVEYOR



() 1 = RECORD DATA PER B.T. E-252
 () 2 = RECORD DATA PER UNRECORDED MULT. CO. VISIT OF 4/6/1992

12-9-05 1000
 CS 2005 111