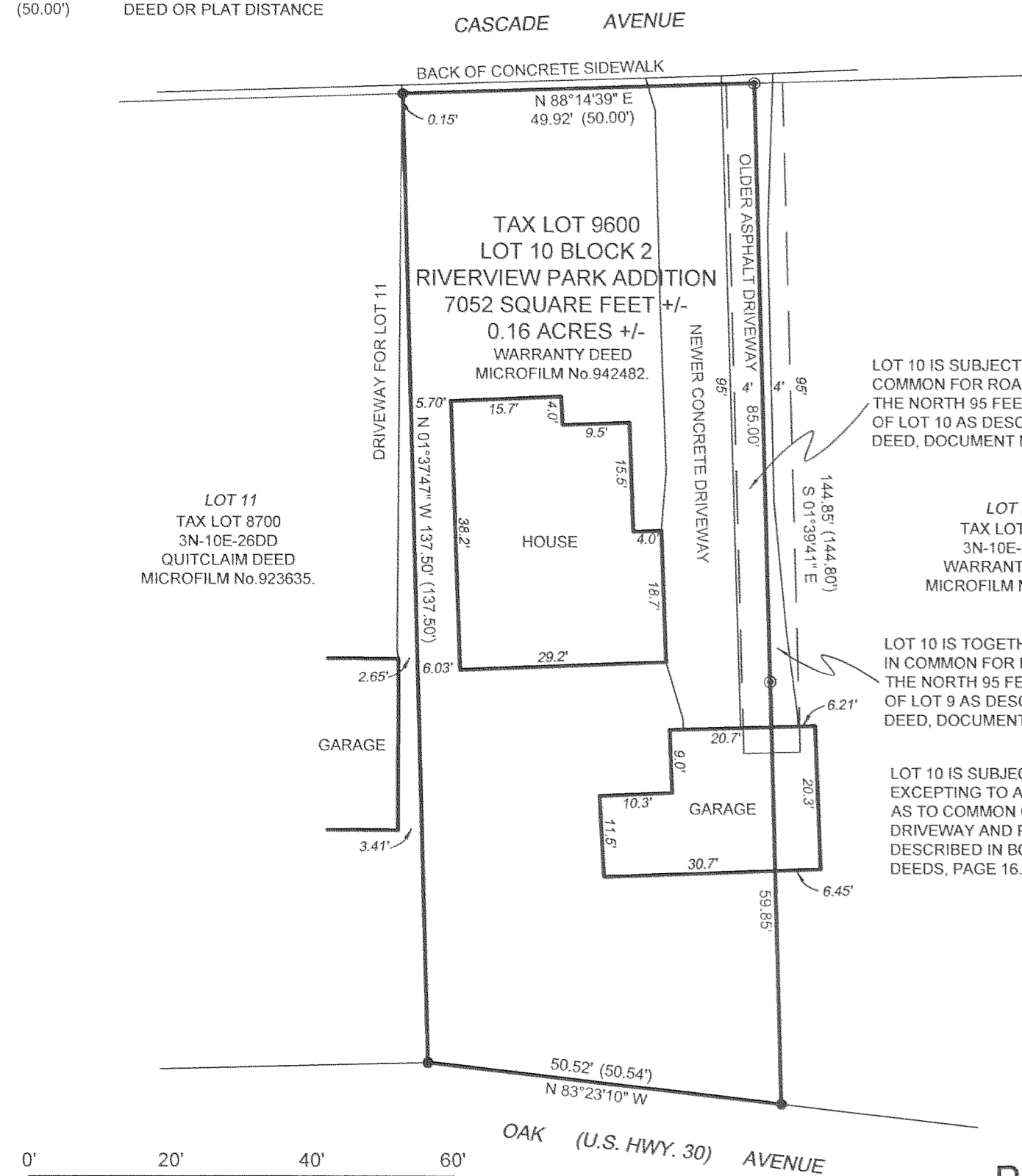


SYMBOL LEGEND:

- SET 5/8" X 30" IRON ROD WITH ORANGE PLASTIC CAP STAMPED "CROSS P.L.S. 60051"
- ⊙ SET SURVEY NAIL
- FOUND MONUMENT OF RECORD AS NOTED
- CALCULATED CORNER, NOT SET
- (50.00') DEED OR PLAT DISTANCE



NARRATIVE:

THE PURPOSE OF THIS SURVEY IS TO ESTABLISH AND MONUMENT THE PROPERTY BOUNDARY CORNERS OF TAX LOT 9600 OF HOOD RIVER COUNTY ASSESSORS MAP 3N-10-25CC AS DESCRIBED BY WARRANTY DEED RECORDED JUNE 29, 1994 AS MICROFILM No. 942482. A FULL TITLE REPORT WAS NOT PROVIDED BY THE CLIENT AND NO GUARANTEE IS MADE AS TO ANY INFORMATION THAT A CURRENT TITLE REPORT MAY DISCLOSE.

TAX LOT 9600 IS DESCRIBED BY DEED TO BE LOT 10, BLOCK 2 OF RIVERVIEW PARK ADDITION TO HOOD RIVER, AND THE PROPERTY BOUNDARY WAS RESOLVED AS FOLLOWS: I HELD THE LINE BETWEEN THE MONUMENT FOUND AT THE NORTHEAST CORNER OF BLOCK 1 OF THE ADJACENT AMENDED PLAT OF IDLEWILD ADDITION AND THE MONUMENT FOUND PREVIOUSLY DURING MY SURVEY C.S.#2003043 AT THE NORTHWEST CORNER OF BLOCK 3 OF RIVERVIEW PARK ADDITION. I HELD THE DEED DISTANCE OF 175 FEET FOR THE PORTION EXCLUDED FROM THE ORIGINAL PLAT AND THE ORIGINAL ROAD WIDTHS FOR 13TH AND 10TH STREETS AND PROPORTIONED THE REMAINING DISTANCE TO ESTABLISH THE NORTH LINES OF LOTS 4 TO 14.

I ESTABLISHED THE EAST LINE OF THE ADJACENT AMENDED PLAT OF IDLEWILD ADDITION THROUGH THE MONUMENT FOUND AT ITS NORTHEAST CORNER AND THE CALCULATED POSITION OF THE MONUMENT FOUND TO THE SOUTH ON SAID EAST LINE AS SHOWN ON C.S.#87063 (THIS MONUMENT WAS FOUND DISTURBED). I THEN OFFSET THIS LINE BY THE ORIGINAL ROAD WIDTH OF 60 FEET TO ESTABLISH THE WEST LINE OF BLOCK 2 OF RIVERVIEW PARK ADDITION. I HELD THE ORIGINAL PLAT DISTANCE FOR THE WEST LINE OF BLOCK 2 OF RIVERVIEW PARK ADDITION THUS ESTABLISHING ITS SOUTHWEST CORNER. I HELD THE MONUMENTS FOUND FOR WEST LINE OF BLOCK 3 OF RIVERVIEW PARK ADDITION AND OFFSET THEM BY THE ORIGINAL PLAT DISTANCE OF 50 FEET TO ESTABLISH THE EAST LINE OF BLOCK 2 OF RIVERVIEW PARK ADDITION. I HELD THE ORIGINAL PLATTED DISTANCE FOR THE EAST LINE OF BLOCK 2 THUS ESTABLISHING THE SOUTHEAST CORNER OF BLOCK 2. NO MONUMENTS WERE FOUND ON THE SOUTH LINE OF BLOCK 2 OF RIVERVIEW PARK ADDITION. TO ESTABLISH THIS LINE I HELD THE ORIGINAL PLAT DISTANCES TO CALCULATE THE SOUTHWEST CORNER OF LOT 10 AND THE SOUTHWEST CORNER OF LOT 20 BY DISTANCE-DISTANCE INTERSECTION. THIS METHOD RESULTED IN A GOOD FIT TO THE MONUMENT FOUND ON THE OPPOSITE SIDE OF OAK AVENUE AND THE DEFICIENCY BETWEEN THE TWO CALCULATED POINTS OF 0.18' WAS CONSIDERED ACCEPTABLE. I THEN PROPORTIONED THIS SMALL DEFICIENCY TO ESTABLISH THE SOUTH LINES OF LOTS 9 AND 10 AND 15 TO 19.

I THEN SET MONUMENTS AS SHOWN AT THE CALCULATED CORNERS OF LOT 10. AN ADDITIONAL MONUMENT WAS SET ON THE EAST LINE OF LOT 10 AT THE LANDOWNERS REQUEST.

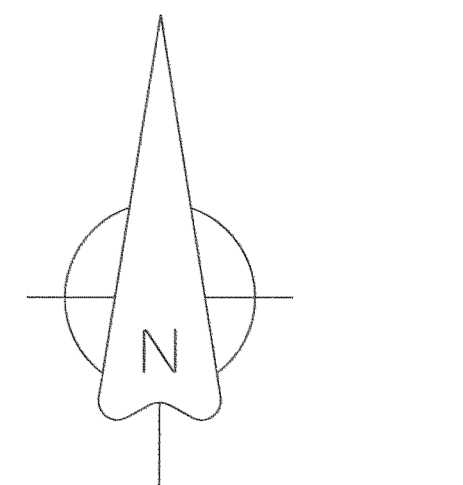
THE IMPROVEMENTS ON LOT 10 AND NEAR THE PROPERTY LINES WERE LOCATED AS SHOWN. THERE ARE EASEMENTS TO PROVIDE ACCESS OVER THE SHARED DRIVEWAY BETWEEN LOTS 9 AND 10 AS SHOWN. THERE IS ALSO AN AGREEMENT FOR THE GARAGE THAT STRADDLES THE COMMON PROPERTY LINE FOR LOTS 9 AND 10 AS SHOWN.

REFERENCES:

- HOOD RIVER COUNTY ASSESSORS MAPS 3N-10E-25CC & 3N-10E-26DD.
- HOOD RIVER COUNTY WARRANTY DEED, RECORDED JUNE 29, 1994 AS MICROFILM No. 942482.
- HOOD RIVER COUNTY QUIT CLAIM DEED, RECORDED DECEMBER 15, 1992 AS MICROFILM No. 923635.
- HOOD RIVER COUNTY WARRANTY DEED, RECORDED FEBRUARY 24, 1969 AS MICROFILM No. 690207.
- HOOD RIVER COUNTY CONVEYANCE TO ESTABLISH RECORD, RECORDED AUGUST 23, 1963 IN DEED BOOK 74, PAGE 16.
- SUBDIVISION PLAT OF BLOCK 2, RIVERVIEW PARK ADDITION TO THE CITY OF HOOD RIVER, RECORDED SEPTEMBER 30, 1911.
- C.S.#2003043, FILED JUNE 12, 2003, HOOD RIVER COUNTY SURVEY OFFICE.
- C.S.#2003022, FILED APRIL 8, 2003, HOOD RIVER COUNTY SURVEY OFFICE.
- C.S.#2002003, FILED JANUARY 9, 2002, HOOD RIVER COUNTY SURVEY OFFICE.
- C.S.#2001084, FILED NOVEMBER 8, 2001, HOOD RIVER COUNTY SURVEY OFFICE.
- C.S.#87063, FILED OCTOBER 21, 1987, HOOD RIVER COUNTY SURVEY OFFICE.
- C.S.#82018, FILED DECEMBER 2, 1982, HOOD RIVER COUNTY SURVEY OFFICE.
- C.S.#79005, FILED JANUARY 2, 1979, HOOD RIVER COUNTY SURVEY OFFICE.

BASIS OF BEARINGS:

C.S.#2003043, FILED JUNE 12, 2003, HOOD RIVER COUNTY SURVEY OFFICE.



SCALE 1" = 40 FEET
REGISTERED PROFESSIONAL LAND SURVEYOR

Bradley J. Cross
OREGON
 JANUARY 15, 2002
BRADLEY J. CROSS
 60051
 RENEWAL DATE: 12/31/2005

FILED

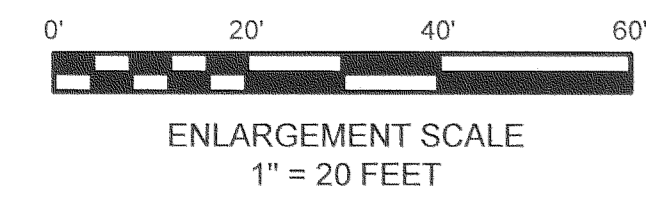
OCT 14 2005
Paul J. Smith
 COUNTY CLERK

PROJECT NUMBER: 2005015
 DATE OF SURVEY: SEPTEMBER 29 2005
 DATE OF DRAWING: SEPTEMBER 30 2005
 HOOD RIVER COUNTY ASSESSORS MAP: 3N-10E-25CC

COLUMBIA RIVER SURVEYING & MAPPING

SUITE 23, 216 CASCADE AVE
 HOOD RIVER, OREGON, 97031
 PHONE/FAX: 541-386-9002
 EMAIL: INFO@COLUMBIASURVEYING.COM

PROPERTY BOUNDARY SURVEY FOR KATHRYN NELSON
TAX LOT 9600, HOOD RIVER COUNTY ASSESSORS MAP 3N-10E-25CC
 LOCATED IN THE SOUTHWEST QUARTER OF SECTION 25, TOWNSHIP 3 NORTH,
 RANGE 10 EAST. W.M., CITY OF HOOD RIVER, HOOD RIVER COUNTY, OREGON



FILED 10-12-05 1000

CS 2005 085