

NARRATIVE:

THE PURPOSE OF THIS DRAWING IS TO SHOW A BOUNDARY LINE ADJUSTMENT OF TAX LOT 1301 AND PARCEL 1 OF PARTITION 200502P SHOWN ON HOOD RIVER COUNTY ASSESSORS MAP 2N-10-25B, THE TAX LOT 1000 HAS BEEN OVERLAID WITH THE DEDICATION OF "LOWER MILL DRIVE" PUBLIC RIGHT OF WAY.

SEE HOOD RIVER COUNTY SURVEYORS OFFICE C.S.#2003027 & C.S.#2003034 BOTH CONDUCTED BY TERRA SURVEYING IN 2003 FOR THE DERIVATION OF EXISTING PROPERTY BOUNDARIES. SEE THE PARTITION 200502P SURVEY FOR THE LOCATION OF ALL NEW AND EXISTING EASEMENTS WHICH AFFECT THE PARCELS BEING ADJUSTED.

LOCATION OF SURVEY:

PORTION OF THE WEST HALF OF THE NORTHWEST QUARTER OF SECTION 25, TOWNSHIP 2 NORTH, RANGE 10 EAST, WILLAMETTE MERIDIAN, HOOD RIVER COUNTY, OREGON.

REFERENCES:

HOOD RIVER COUNTY ASSESSORS MAP 2N-10-25B REVISED 07/15/03.
 HOOD RIVER COUNTY ASSESSORS MAP 2N-10-25C REVISED 11/19/02.
 HOOD RIVER COUNTY SURVEYORS OFFICE C.S.#2003027.
 HOOD RIVER COUNTY SURVEYORS OFFICE C.S.#2003034.
 HOOD RIVER COUNTY SURVEYORS OFFICE C.S.#2004041.
 HOOD RIVER COUNTY SURVEYORS OFFICE C.S.#2005007(1,2).
 STATE HIGHWAY 35 SURVEY 98-2-12.

LINE TABLE:

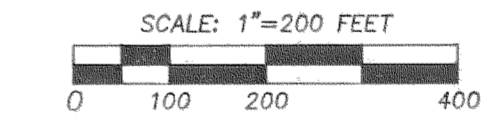
NO.	BEARING	DISTANCE
L1	N 01°24'11" E	19.15
L2	NOT USED	
L3	S 15°38'31" W	33.56
L4	S 81°08'31" E	71.02
L5	S 89°03'03" E	34.27
L6	N 69°59'56" W	30.00
L7	N 00°55'21" E	90.81
L8	N 10°49'27" W	114.93
L9	N 00°12'43" W	127.44
L10	N 04°53'15" W	100.38
L11	NOT USED	

CURVE TABLE:

NO	DELTA	RADIUS	LENGTH	CHORD	CHORD BRG
C1	77°06'38"	26.00	34.99	32.41	N 50°31'45" W
C2	89°51'46"	26.00	40.78	36.73	N 44°00'32" W
C3	19°23'54"	120.00	40.63	40.43	S 81°21'38" W
C4	107°35'43"	11.00	20.66	17.75	S 17°51'49" W
C5	104°35'35"	64.000	116.808	101.257	N 62°20'43" E
C6	52°45'48"	64.00	58.94	56.88	S 38°59'14" E
C7	32°36'24"	64.00	36.42	35.93	S 03°41'52" W
C8	26°26'50"	134.00	61.85	61.31	S 33°13'29" W
C9	4°04'37"	134.00	9.53	9.53	S 48°29'13" W
C10	58°14'53"	174.63	177.53	169.99	N 56°20'57" E
C11	13°07'46"	1402.39	321.36	320.65	N 20°40'57" E
C12	15°00'01"	70.00	18.33	18.27	S 08°08'30" W
C13	40°32'04"	180.00	127.34	124.70	S 70°47'33" W
C14	90°00'00"	26.00	40.84	36.77	N 44°04'38" W
C15	68°07'06"	131.42	156.25	147.21	S 58°47'50" W
C16	1°47'52"	2834.790	88.946	88.943	S 89°56'59" E
C17	3°41'07"	2834.790	182.339	182.308	N 87°18'31" E
C18	45°59'36"	64.000	51.375	50.007	N 12°56'14" W

LEGEND:

- SET 5/8" X 30" IRON ROD WITH PLASTIC CAP
- FOUND 5/8" IRON ROD, PLS 1815
- ⊙ FOUND SURVEY NAIL IN ASPHALT
- ⊙ FOUND MONUMENT OF RECORD
- CALCULATED, NOT FOUND OR SET
- () DEED OR PLAT CALL



1983, OREGON NORTH, GRID BEARINGS

FILED

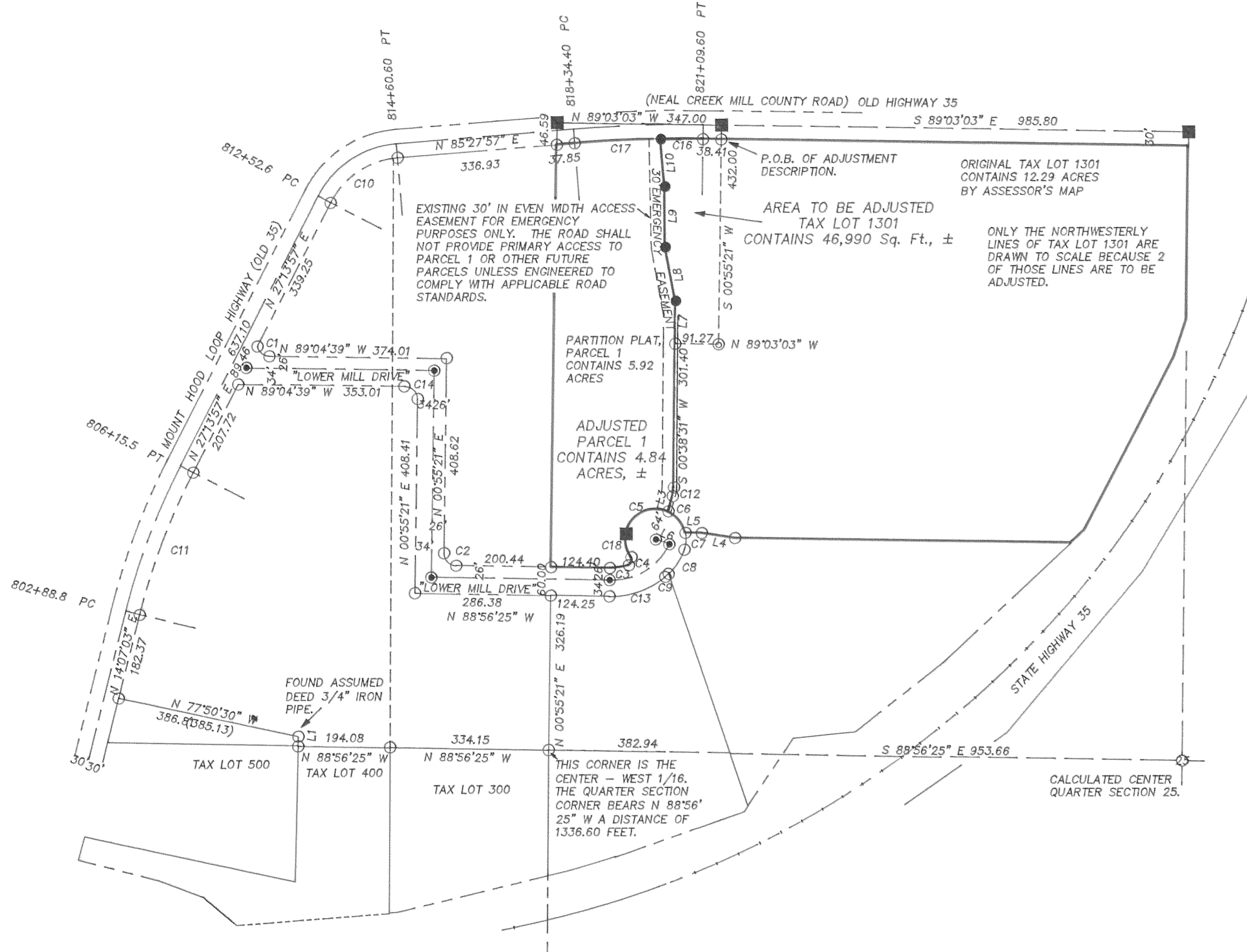
SEP 22 2005

Ronald Feltz
 COUNTY SURVEYOR

TERRA SURVEYING

DATE: AUGUST, 2005
 SCALE: 1" = 200'
 PROJECT: 205013

P.O. BOX 617
 HOOD RIVER, OREGON 97031
 PHONE & FAX: (541) 386-4531
 E-Mail: terra@gorge.net
 2N 10E 25B TAX LOTS 1300 & 1301



	EXISTING PARCEL SIZE	ADJUSTED PARCEL SIZE
PARCEL 1	5.92 ACRES	4.84 ACRES
TAX LOT 1301	18.54 ACRES	19.61 ACRES

REGISTERED PROFESSIONAL LAND SURVEYOR

Roy O. Gaylord

OREGON
 JULY 13, 1979
 ROY O. GAYLORD
 1815

Expires June, 2007

BOUNDARY LINE ADJUSTMENT SURVEY
 for
 HANEL DEVELOPMENT GROUP, L.L.C.

REC'D: 8-31-05 1500

C.S. 2005 075