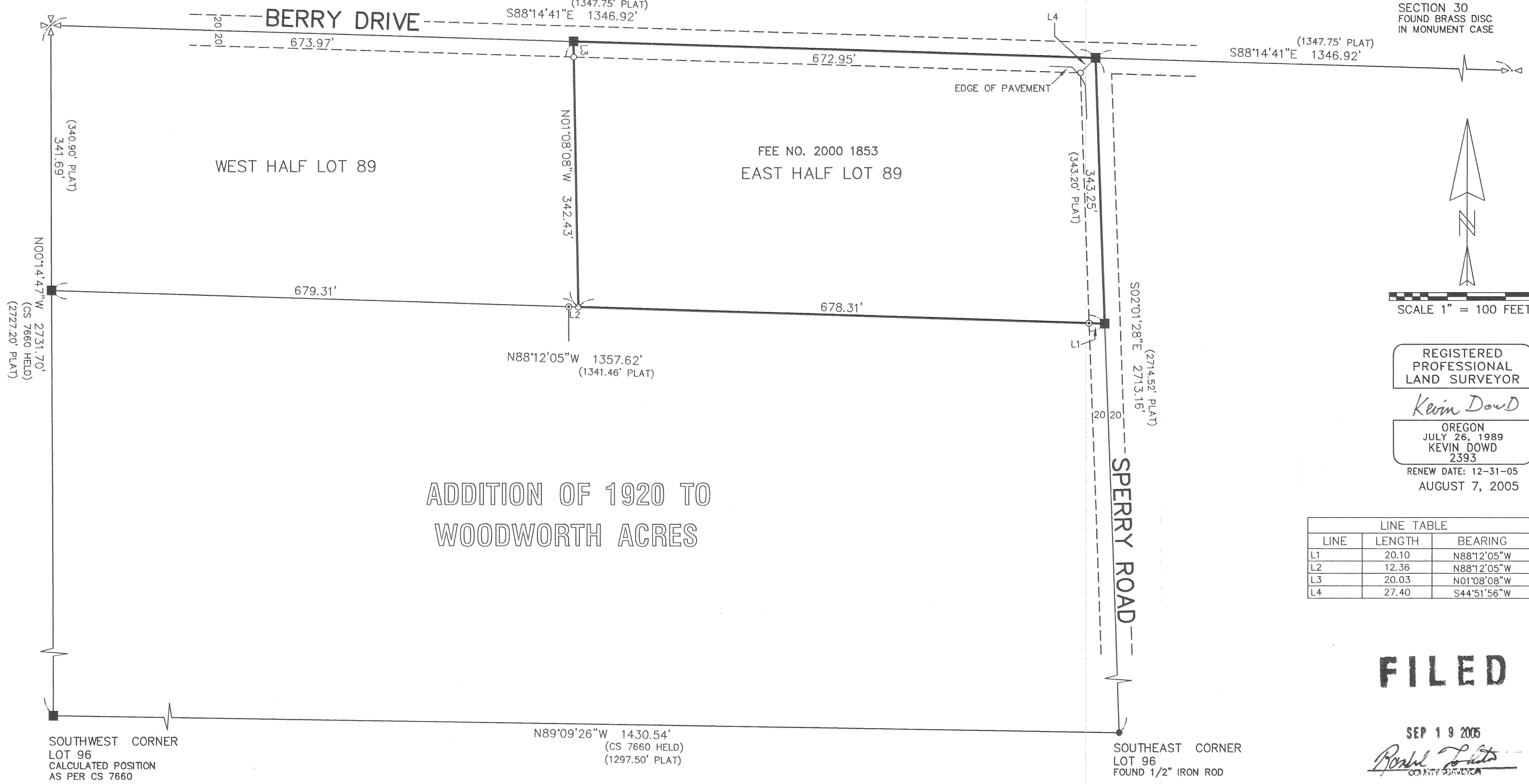


NORTHWEST CORNER  
SECTION 30  
FOUND 5/8" IRON ROD  
IN MONUMENT CASE

BASIS OF BEARING: CS 7660  
(1347.75' PLAT)  
S88°14'41"E 1346.92'

NORTH QUARTER CORNER  
SECTION 30  
FOUND BRASS DISC  
IN MONUMENT CASE



SCALE 1" = 100 FEET

REGISTERED PROFESSIONAL LAND SURVEYOR

*Kevin Dowd*

OREGON  
JULY 26, 1989  
KEVIN DOWD  
2393  
RENEW DATE: 12-31-05  
AUGUST 7, 2005

LINE TABLE		
LINE	LENGTH	BEARING
L1	20.10	N88°12'05"W
L2	12.36	N88°12'05"W
L3	20.03	N01°08'08"W
L4	27.40	S44°51'56"W

**FILED**

SEP 19 2005  
*Ronald Latta*  
COUNTY SURVEYOR  
DEPUTY

ADDITION OF 1920 TO WOODWORTH ACRES

**NARRATIVE:**

THE PURPOSE OF THIS SURVEY IS TO ESTABLISH THE BOUNDARIES OF THE EAST HALF OF LOT 89, ADDITION OF 1920 TO WOODWORTH ACRES. THE BOUNDARIES WERE ESTABLISHED AS FOLLOWS:  
AN IRON ROD IN MONUMENT CASE FOUND AT THE NORTHWEST CORNER OF SECTION 30 WAS ACCEPTED AS THE NORTHWEST CORNER OF LOT 89.  
A BRASS CAP IN MONUMENT CASE FOUND AT THE NORTH QUARTER CORNER OF SECTION 30 WAS ACCEPTED AS THE NORTHEAST CORNER OF LOT 73.  
THE NORTHEAST CORNER OF LOT 89 WAS CALCULATED BY PROPORTION BETWEEN SAID NORTHWEST CORNER OF LOT 89 AND NORTHEAST CORNER OF LOT 73.  
A FOUND IRON ROD WAS ACCEPTED AS THE SOUTHWEST CORNER OF LOT 96.  
THE NORTHEAST CORNER OF LOT 89 AND THE SOUTHWEST CORNER OF LOT 96 WERE HELD TO ESTABLISH THE DIRECTION OF THE EAST LINE OF LOT 89.  
THE SOUTHWEST CORNER OF LOT 96 WAS CALCULATED BY DISTANCE-DISTANCE INTERSECTION FROM THE SOUTHWEST CORNER OF LOT 96 AND THE NORTHWEST CORNER OF LOT 89 AS PER CS 7660 DATA.  
THE NORTHWEST CORNER OF LOT 89 AND THE SOUTHWEST CORNER OF LOT 96 WERE HELD TO ESTABLISH THE DIRECTION OF THE WEST LINE OF LOT 89.  
THE TWO IRON RODS AS SET BY CS 84077 FOR A SURVEY IN LOT 90 WERE HELD TO ESTABLISH THE DIRECTION OF THE SOUTH LINE OF LOT 89.  
THE SOUTHWEST AND SOUTHWEST CORNERS OF LOT 89 WERE CALCULATED BY BEARING-BEARING INTERSECTION. THE EAST AND WEST HALVES OF LOT 89 WERE ESTABLISHED BASED ON AREA.  
THE DIRECTION OF THE DIVISION LINE BETWEEN THE TWO HALVES WAS ESTABLISHED AS THE MEAN BEARING OF THE EAST AND WEST LINES OF LOT 89.

**LEGEND:**

- SET 1/2" X 30" IRON ROD WITH YELLOW PLASTIC CAP STAMPED "WYEAST LS 2393"
- ⊙ FOUND 1/2" IRON ROD AS PER CS 84077
- FOUND MONUMENT AS NOTED
- CALCULATED POSITION

**RECORD OF SURVEY**

EAST HALF OF LOT 89  
ADDITION OF 1920 TO WOODWORTH ACRES  
SITUATED IN THE NORTHWEST QUARTER  
OF SECTION 30  
T1 NORTH, R10 EAST, W.M.  
HOOD RIVER COUNTY, OREGON

FOR: LERRY BROWN

WYEAST SURVEYS  
KEVIN DOWD  
4399 WOODWORTH DRIVE  
MT HOOD, OR 97041  
(541) 352-6065