

CORNER RESTORATION REPORT

SECTION 22 & 23 TOWNSHIP 2 NORTH RANGE 7 EAST
 COUNTY MULTNOMAH & HOOD RIVER DATE AUGUST 15, 2005

CORNER DESIGNATION:

1/4 CORNER COMMON TO SECTIONS 22 AND 23.

CORNER STATUS:

THIS CORNER WAS ESTABLISHED IN 1934 BY THE U.S. ARMY CORPS OF ENGINEERS, AS REPORTED IN SN G-15/7. A 1-1/2" IRON PIPE WITH BRASS CAP WAS SET FOR THE CORNER.
 ON SEPTEMBER 11, 1958 A MULTNOMAH COUNTY FIELD CREW UNDER THE SUPERVISION OF HOMER G. BURSSELL, DEPUTY COUNTY SURVEYOR, FOUND THE CORNER MONUMENT UNDISTURBED, AS REPORTED IN B.T. C-348. TWO MARKED BEARING TREES WERE FOUND BUT IT WAS NOTED THAT THESE WERE NOT OF RECORD. TWO ADDITIONAL BEARING TREES WERE MARKED AND A CHISELED CROSS AND BRASS SCREW WERE SET IN A NEARBY BOULDER FOR REFERENCES.

PREVIOUS RENEWALS / SURVEYS, ETC.:

SN G-15/7; B.T. BOOK-PAGE: C-348.

MONUMENT(S) & ACCESSORIES FOUND:

- Ⓐ FOUND: 1-1/2" GALVANIZED IRON PIPE WITH U.S. ARMY CORPS OF ENGINEERS 4" BRASS DISC, MARKED AS SHOWN BELOW (SN G-15/7), UP 0.9'.
- Ⓒ FOUND: 22" FIR WITH HEALED FACE (12" FIR PER C-348). CHOPPED INTO TREE TO EXPOSE LARGE RAILROAD SPIKE WITH PUNCHED "X" RECESSED 0.25' INSIDE TRUNK. FOUND YELLOW LOCATION TAG ATTACHED TO TREE.
- Ⓔ FOUND: 60" FIR (41" FIR PER C-348). FOUND EVIDENCE OF AXE WORK ON TRUNK. RAILROAD SPIKE NOT FOUND. SET YELLOW LOCATION TAG ON TREE.
- Ⓒ FOUND: 6' X 3' X 4' HIGH BOULDER WITH CHISELED CROSS AND PHILLIPS BRASS SCREW IN LEAD NEAR HIGH POINT OF BOULDER (C-348).

MONUMENT SET:

HELD MONUMENT POSITION, TIED EXISTING REFERENCES AND SET NEW REFERENCES AS NOTED.

NEW ACCESSORIES:

B.T. = BEARING TREE G.L.O. = GENERAL LAND OFFICE
 RRS = RAILROAD SPIKE
 SN = SURVEY NUMBER, MULTNOMAH COUNTY SURVEY RECORDS
 YPC = YELLOW PLASTIC CAP MARKED "MULT. CO. SURVEY"

- Ⓑ SET: 3/4" X 30" GALVANIZED IRON PIPE WITH YPC, FLUSH.
- Ⓓ SET: 3/4" X 30" GALVANIZED IRON PIPE WITH YPC, UP 0.2'.
- Ⓕ SET: 3/4" X 30" GALVANIZED IRON PIPE WITH YPC, UP 0.1'.

SET: 6 FOOT WHITE CARBONITE POST WITH STANDARD "SURVEY MARKER" DECAL - NORTH, 2.0'.

LOCATION & COMMENTS:

FROM PORTLAND FOLLOW THE I-84 FREEWAY EASTBOUND, TAKING EXIT 41 AT EAGLE CREEK CAMPGROUND AND FISH HATCHERY. AT THE END OF THE FREEWAY OFFRAMP, TURN RIGHT AND CONTINUE SOUTH ALONG A ROAD THAT PARALLELS THE EAST SIDE OF EAGLE CREEK FOR 0.3 MILE TO A ROCK OUTCROPPING ON THE EAST SIDE OF THE ROAD. FROM THIS POINT WALK N35E, 150'± TO THE CORNER.

BY:

MULTNOMAH COUNTY SURVEYOR'S OFFICE
 1600 S.E. 190TH AVE.
 PORTLAND, OR 97233

CREW:

NICHOLLS, KAHSAY, KRANZ

FIELD BOOK:

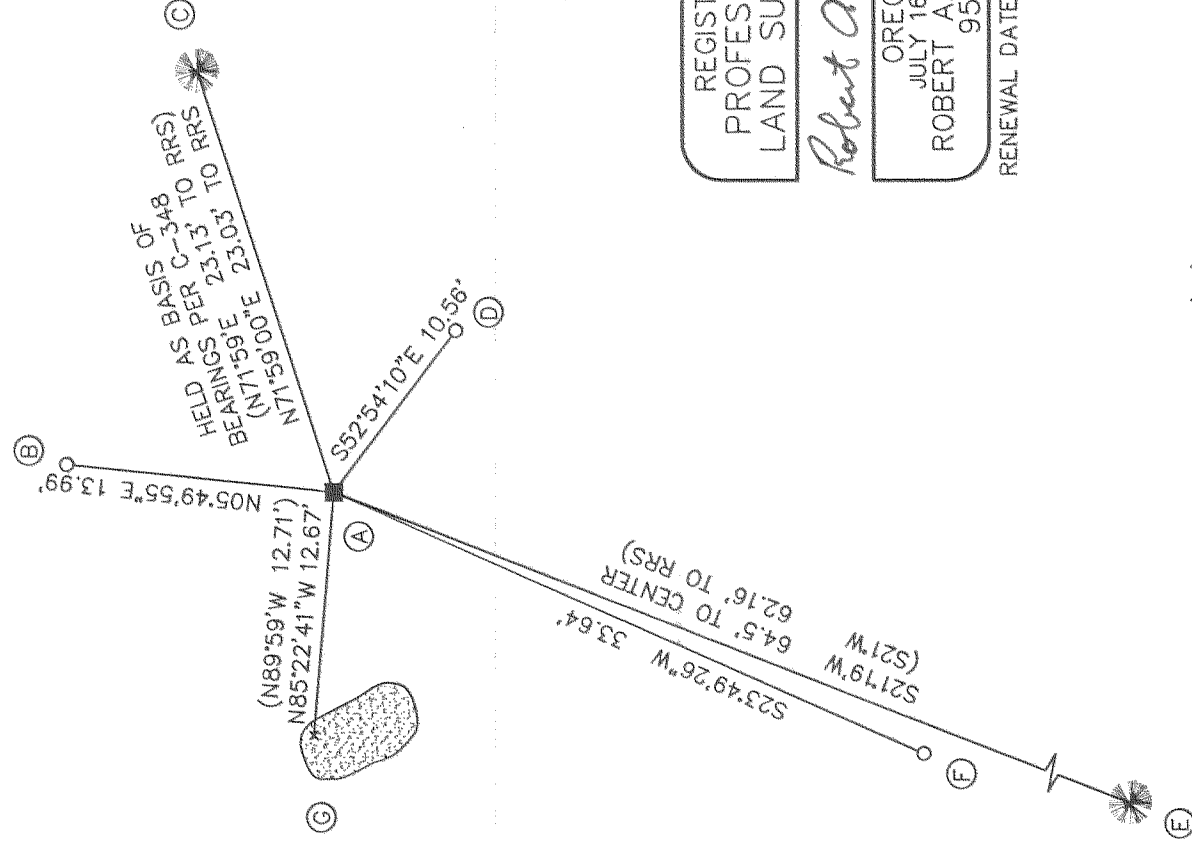
CORNER BOOK 26, PAGE 55

EQUIPMENT:

WILD T-1600, DI-2000, TDS-48

SKETCH:

CC26_31-76.DWG



FILED

SEP 19 2005

Robert A. Hovden
 COUNTY SURVEYOR
 DEPUTY

REGISTERED
 PROFESSIONAL
 LAND SURVEYOR

Robert A. Hovden

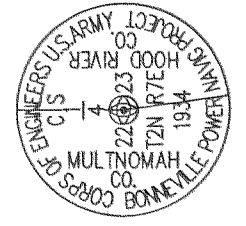
OREGON
 JULY 16, 1971
 ROBERT A. HOVDEN
 954

RENEWAL DATE: 6/30/2007



SCALE: 1" = 10'

BRASS DISC



() = RECORD DATA PER B.T. C-348

C-3 2005 066

7000' 9 6-05
 C S 2005 066